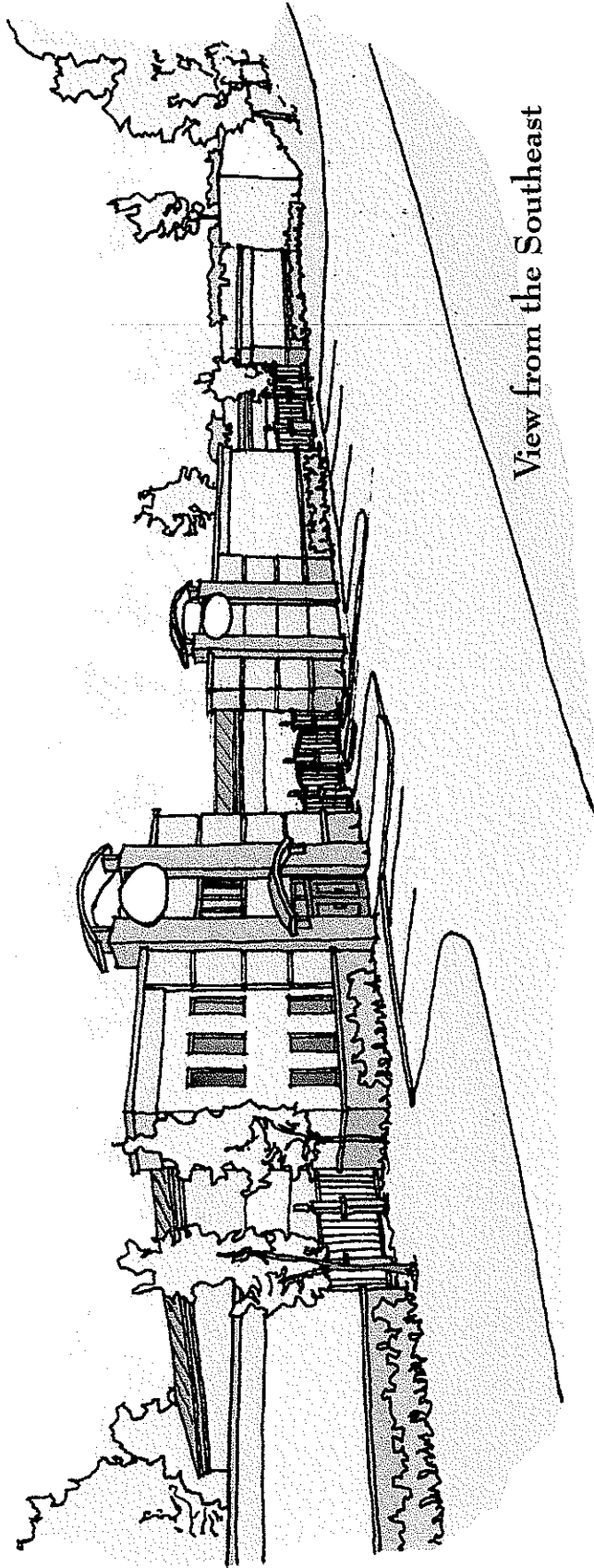


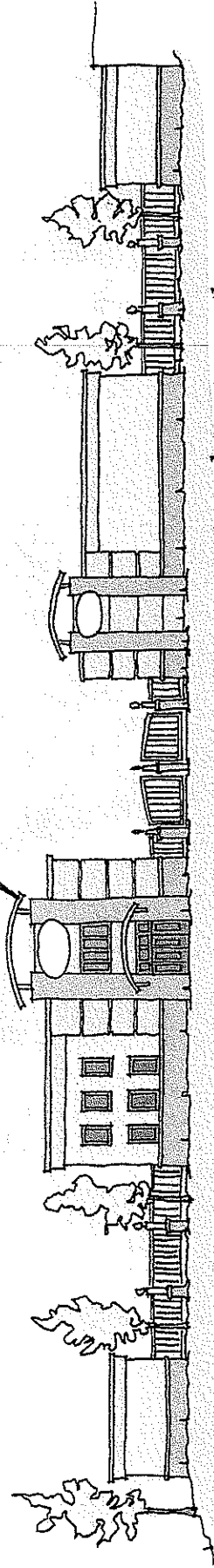
Facts about proposed Self Storage Facility on Wrights Ferry Road

- A. Access to the site is contained to one location on Wrights Ferry Road (a major collector street) as indicated on the site plan. The storage facility will generate only minimal traffic (Phase one = 49 cars per day, completed project = 125 vehicles per day). Also, access from Wrights Ferry Road to South Northshore Drive is controlled by a traffic signal which provides safe access to and from the facility
- B. The site plan provides for 30 foot driveways when buildings open to both sides of a lane and 26 foot driveways when the buildings open to one side of the lane
- C. The maximum size for any one unit is less than 600 square feet.
- D. The total lot size approximates 7 acres.
- E. All outdoor lights are shielded to direct light and glare only onto the self storage facility. Such lighting is only for security purposes. The lighting and glare will be deflected, shaded, and focused away from all adjoining property.
- F. As indicated on the site plan, an opaque fence will be added on the west and on the south sides of the property which border residential zones.
- G. Potential outdoor storage for boat and RV parking has been indicated on the site plan. If outdoor storage is utilized, it will be in place of a proposed building (not located on any driveways) near the back border (west side) of the property.
- H. The operating lease will prohibit:
 - a. The operation of power tools, spray painting equipment, table saws, lathes, compressors, welding equipment, kilns or other similar equipment.
 - b. Any use that is noxious or offensive because of odors, dust, fumes, or vibrations
 - c. The storage of hazardous materials.



View from the Southeast

REVISED TO ONE STORY BUILDING



Wright's Ferry Elevation



1320 Papermill Pointe Way
 Knoxville, Tennessee 37909
 Phone: (865) 558-5855
 Fax: (865) 558-0955

The Foxhollow - Goodson Group

Nashville * Knoxville

Schematic Design
 for
 Wrights Ferry Storage Development
 Knoxville, Tennessee

8-E-06-UR

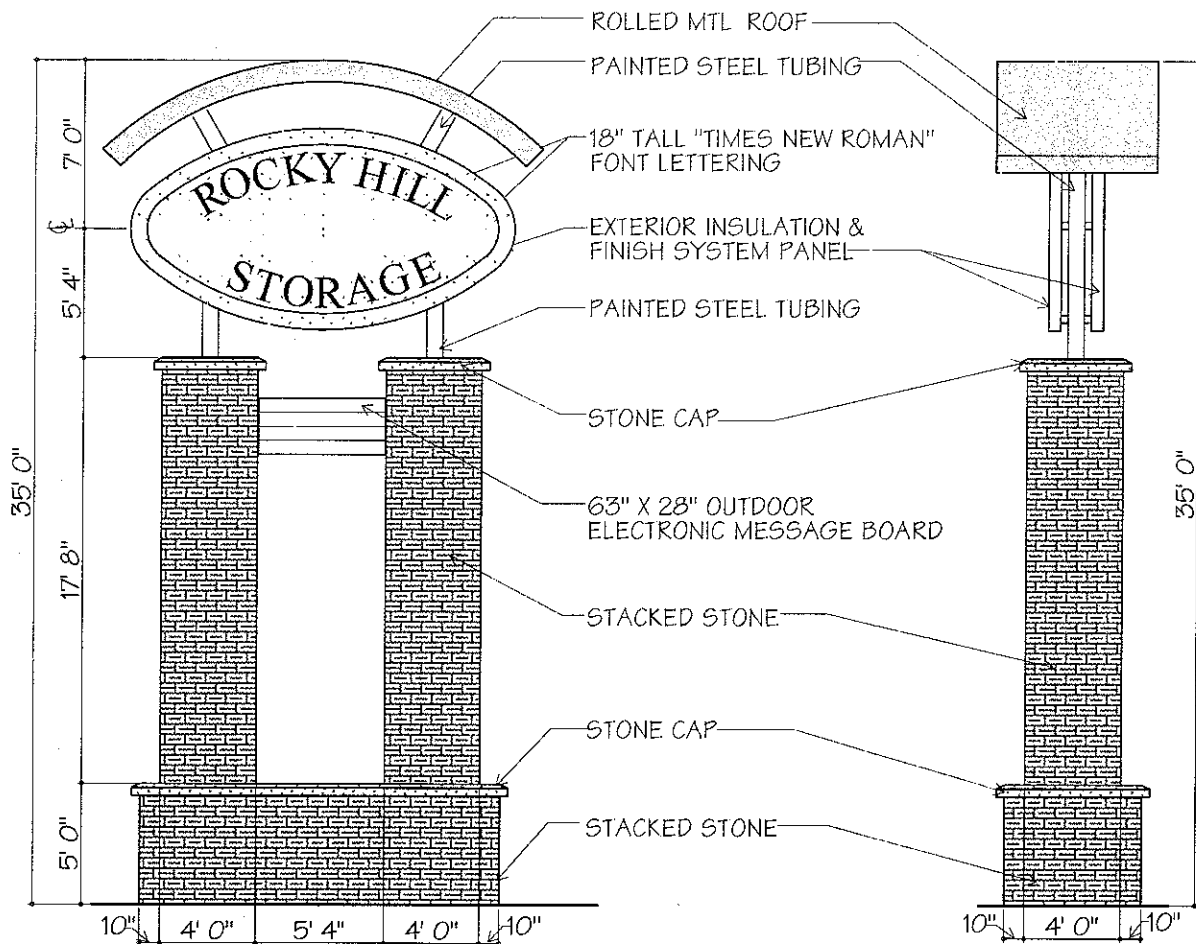
Preliminary Sign Plan Wrights Ferry Self Storage Facility

The storage facility will incorporate three business signs:

- 1) Ground Sign – see attached drawing. Location is indicated on the site plan.
- 2) Wall Sign (2x) – Signs erected parallel to the face of two buildings (see schematic design).

Foxhollow-Goodson Group
 Nashville * Knoxville
 1320 Papermill Pointe Way
 Knoxville, Tennessee 37909
 (865) 558-5855

JOB ROCKY HILL STORAGE SIGNAGE
 SHEET NO --- OF ---
 CALCULATED BY J.P.F. DATE 7.11.2006
 CHECKED BY J.E.I DATE 7.11.2006
 SCALE As Noted



FRONT VIEW

Scale: 1/8" = 1'-0"

SIDE VIEW

Scale: 1/8" = 1'-0"