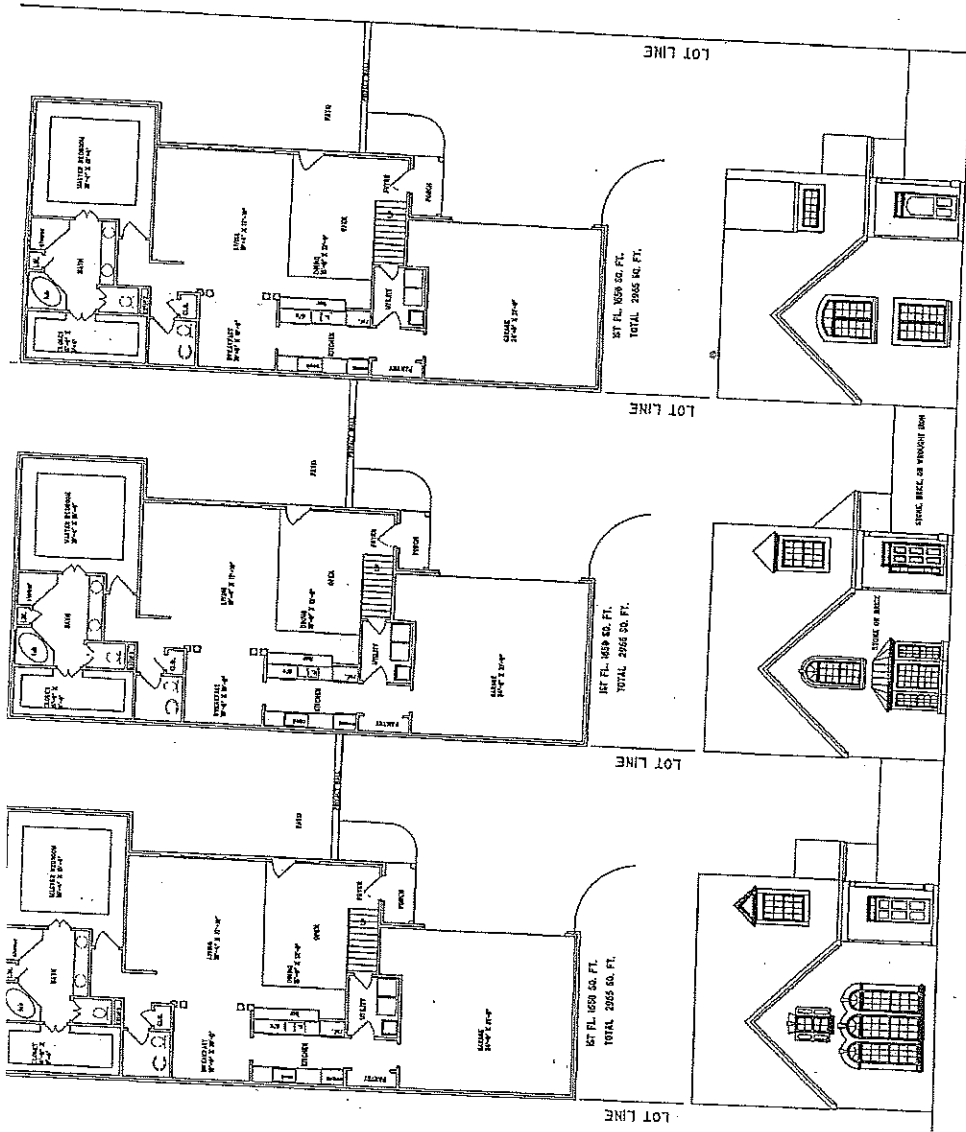


3-SG-06-C  
 3-H-06-UR  
 #20



ROBBINS RIDGE  
 BUILDING ELEVATION  
 AND FLOOR PLAN

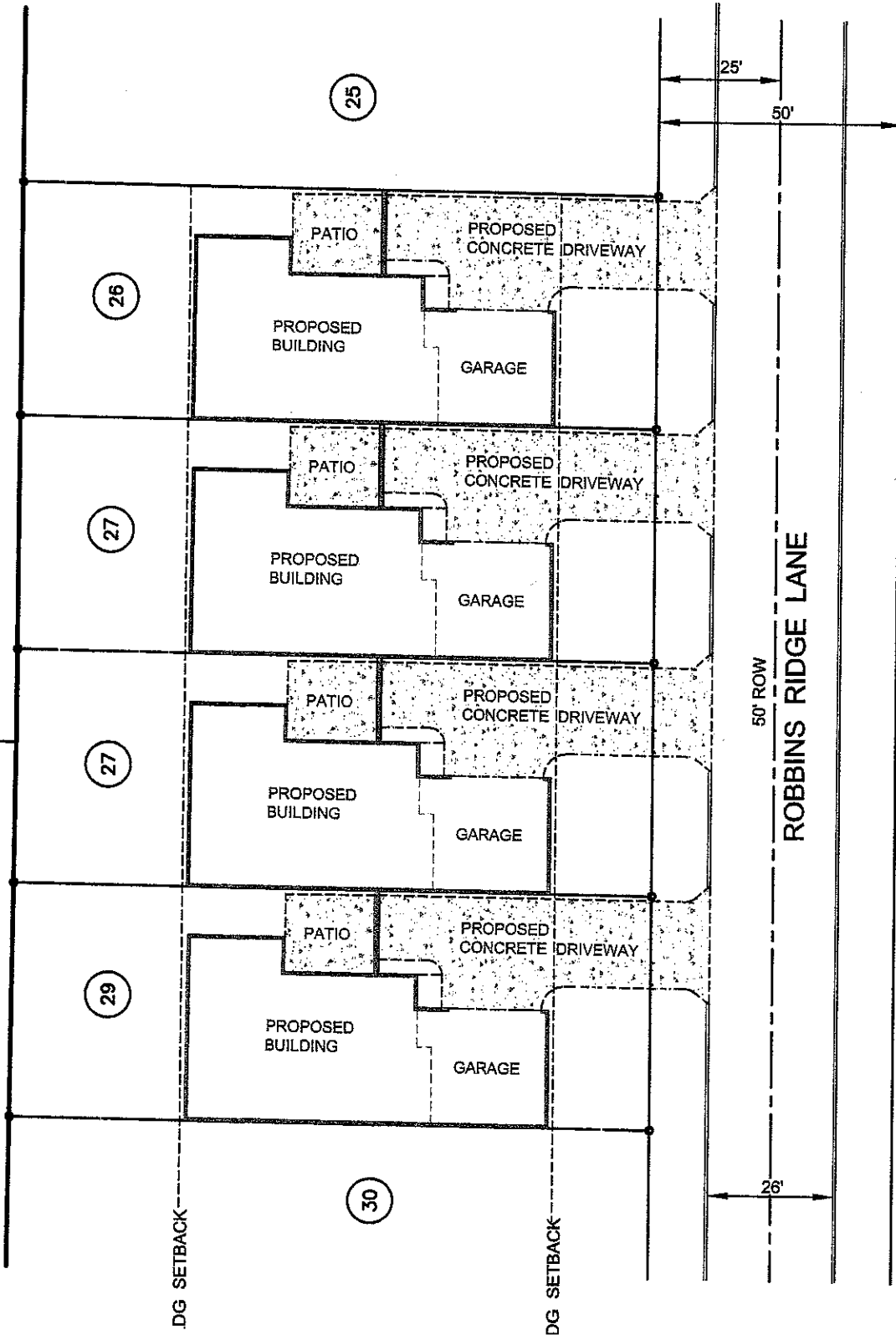
3-SG-06-C

3-H-06-UR

#20

BILL J. BRITTON  
AND ELEANOR J.  
DB 1782/1096

AND ELEANOR J.  
DB 1925/920



### TYPICAL BUILDING LAYOUT -- NTS

1ST. FLOOR: 1650 Sq.Ft.  
TOTAL: 2965 Sq.Ft.