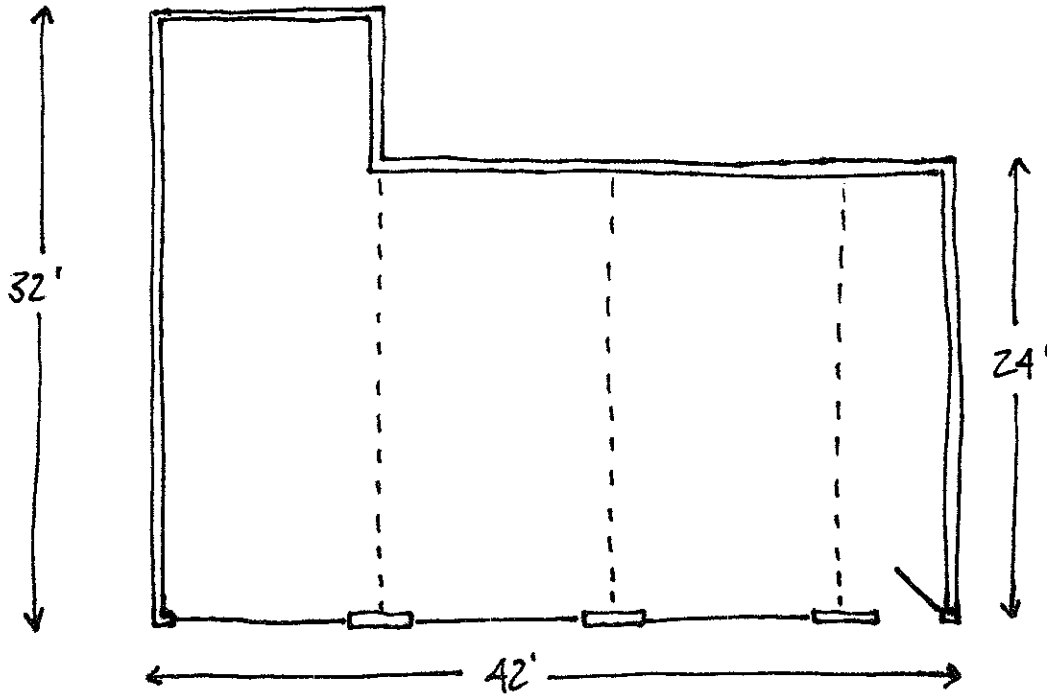
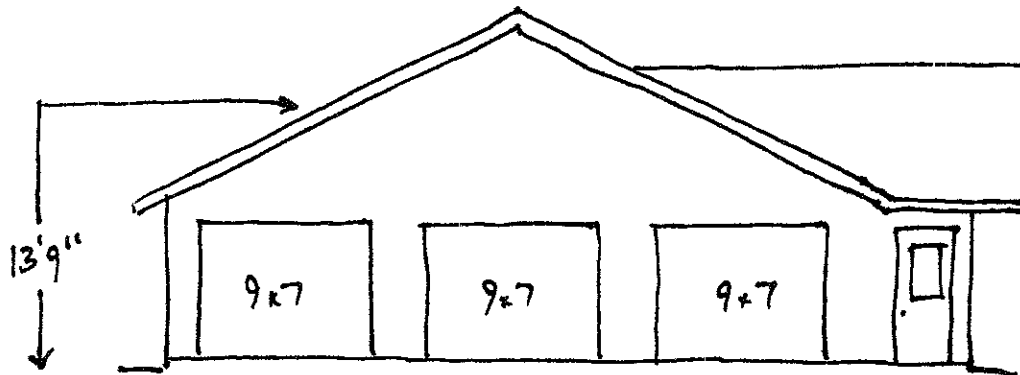


Typical Accessory Building
Approximately 1,100 Sq. Ft.

Plan View

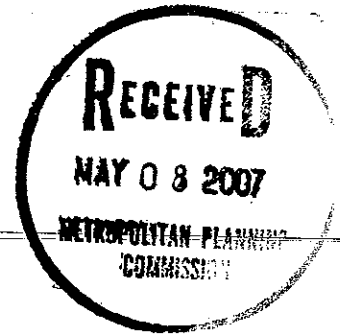


Elevation





May 7, 2007



City of Knoxville
City Council
400 Main Street
Suite 460
Knoxville, TN 37902

RE: Maximum Size of Residential Accessory Buildings

Dear City Council Member:

As chair of the Board of Zoning Appeals this letter is a formal request that you request the Metropolitan Planning Commission staff prepare an amendment to the City of Knoxville Zoning Ordinance as it relates to maximum accessory building square footage in residential zones.

Currently the maximum allowable size is 750 square feet. The Board is asking that a maximum size of 1,100 square feet be considered. A review of the meeting agendas from January 2006 through April 2007 shows there have been fifteen variance requests before the Board to increase this square footage.

Thank you for your attention to this matter.

Sincerely,

Rob Dansereau
by apc

Rob Dansereau, Chairman
Board of Zoning Appeals

- c: Mayor Haslam
Sam Anderson, Sr. Director, Community & Neighborhood Services
Gary Norman, Director, Building Inspections
Mark Donaldson, Executive Director, Metropolitan Planning Commission