

LOCATION MAP
 This is to certify that all property lines and easements are as shown on this plan and are in accordance with the official map of the Knoxville Health Department.

Signature: _____ Date: _____
 Title: _____
 Role: Knoxville Health Department

CERTIFICATE OF OWNERSHIP AND GENERAL BONDICATION
 I, the undersigned, hereby certify bond or other security has been posted with the Knoxville Health Department for the completion and stabilization of all drainage systems as shown on drainage plans which were approved by the _____ Day of _____, 2009.

Signature: _____ Date: _____
 Title: _____
 Role: H.R. DAVIS GENERAL CONSTRUCTION CO.

CERTIFICATE OF FINAL PLAT-CONSTRUCTION INCOMPLETE
 I hereby certify that I am a surveyor licensed to do surveying under the laws of the State of Tennessee. I am a duly sworn and duly qualified surveyor. The documents, plans, and statements shown to me are true and correct. I have examined the plans and statements and find them to be correct and in accordance with the laws of the State of Tennessee. I have also examined the plans and statements and find them to be correct and in accordance with the laws of the State of Tennessee. I have also examined the plans and statements and find them to be correct and in accordance with the laws of the State of Tennessee. I have also examined the plans and statements and find them to be correct and in accordance with the laws of the State of Tennessee.

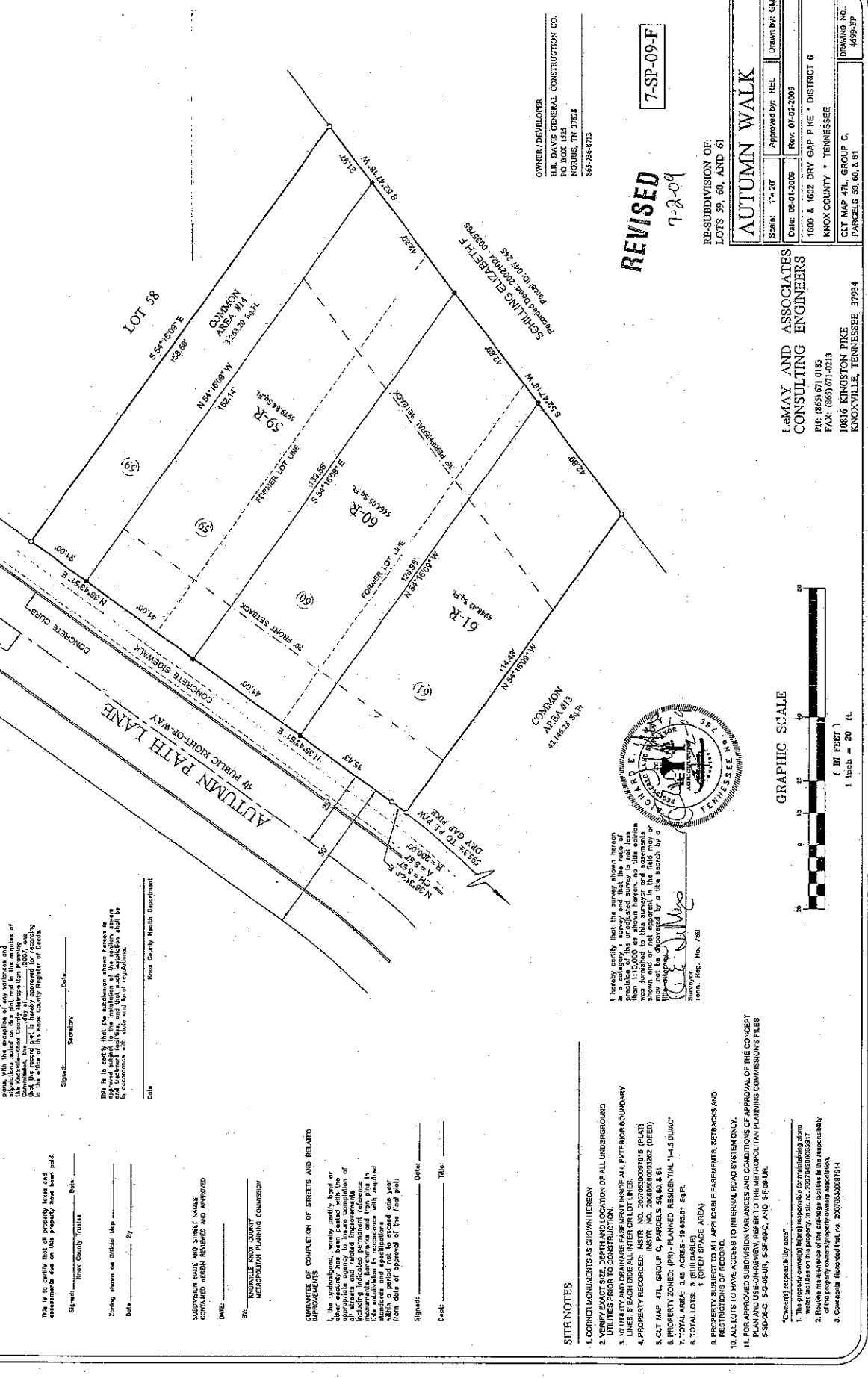
CERTIFICATE OF BONDICATION FOR RECORDING
 This is to certify that the subdivision shown hereon is in accordance with the laws of the State of Tennessee. I have examined the plans and statements and find them to be correct and in accordance with the laws of the State of Tennessee. I have also examined the plans and statements and find them to be correct and in accordance with the laws of the State of Tennessee. I have also examined the plans and statements and find them to be correct and in accordance with the laws of the State of Tennessee.

CERTIFICATE OF BONDICATION FOR RECORDING
 This is to certify that the subdivision shown hereon is in accordance with the laws of the State of Tennessee. I have examined the plans and statements and find them to be correct and in accordance with the laws of the State of Tennessee. I have also examined the plans and statements and find them to be correct and in accordance with the laws of the State of Tennessee. I have also examined the plans and statements and find them to be correct and in accordance with the laws of the State of Tennessee.

CERTIFICATE OF BONDICATION FOR RECORDING
 This is to certify that the subdivision shown hereon is in accordance with the laws of the State of Tennessee. I have examined the plans and statements and find them to be correct and in accordance with the laws of the State of Tennessee. I have also examined the plans and statements and find them to be correct and in accordance with the laws of the State of Tennessee. I have also examined the plans and statements and find them to be correct and in accordance with the laws of the State of Tennessee.

CERTIFICATE OF BONDICATION FOR RECORDING
 This is to certify that the subdivision shown hereon is in accordance with the laws of the State of Tennessee. I have examined the plans and statements and find them to be correct and in accordance with the laws of the State of Tennessee. I have also examined the plans and statements and find them to be correct and in accordance with the laws of the State of Tennessee. I have also examined the plans and statements and find them to be correct and in accordance with the laws of the State of Tennessee.

CERTIFICATE OF BONDICATION FOR RECORDING
 This is to certify that the subdivision shown hereon is in accordance with the laws of the State of Tennessee. I have examined the plans and statements and find them to be correct and in accordance with the laws of the State of Tennessee. I have also examined the plans and statements and find them to be correct and in accordance with the laws of the State of Tennessee. I have also examined the plans and statements and find them to be correct and in accordance with the laws of the State of Tennessee.



LEGEND
 - O LIR(O) - IRON ROD (OLD)
 - ● LIR(M) - IRON ROD (NEW)
 - --- CENTERLINE R/W
 - --- SIDEWALK
 - --- BUILDING SETBACK LINE

ZONED PER (PLANNED RESIDENTIAL) SETBACKS PER APC
 FRONT YARD: 20'
 SIDE YARD: 0'
 REAR YARD: 15'
 PERIMETER: 35'

OWNER/DEVELOPER
 H.R. DAVIS GENERAL CONSTRUCTION CO.
 2000 N. W. 15th St.
 NOKROSS, TN 37868
 662-986-6713

7-SP-09-F

REVISIONS
 7-2-09

RE-SUBDIVISION OF:
 LOTS 59, 60, AND 61

AUTUMN WALK

Scale: 1"=20' Approved by: REL Drawn by: GAS
 Date: 08-01-2009 Rev: 07-22-2009

LE MAY AND ASSOCIATES CONSULTING ENGINEERS
 10816 KINGSTON PIKE
 KNOXVILLE, TENNESSEE 37934
 PH: (865) 671-0183
 FAX: (865) 671-0213

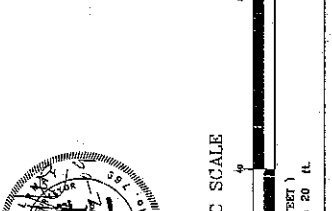
DRAWING NO.: 4699-EP

SITE NOTES

- CORNER MONUMENTS AS SHOWN HEREON
- VERIFY EXACT SIZE, DEPTH AND LOCATION OF ALL UNDERGROUND UTILITIES PRIOR TO CONSTRUCTION.
- ALL LOTS SHALL BE CONVEYED BY DEED.
- ALL LOTS SHALL BE CONVEYED BY DEED.
- ALL MAP #74, GROUP C, PARCELS 59, 60, & 61
- PROPERTY ZONED: (P1) - PLANNED RESIDENTIAL "1-S DUPLICATION"
- TOTAL AREA: 0.45 ACRES - 19,855.51 SQ. FT.
- TOTAL LOTS: 1 (OPEN SPACE AREA)
- PROPERTY SUBJECT TO ALL APPLICABLE EASEMENTS, SETBACKS AND RESTRICTIONS OF RECORD.
- ALL LOTS TO HAVE ACCESS TO INTERNAL ROAD SYSTEM ONLY.
- FOR APPROVED SUBDIVISION VARIANCES AND CONDITIONS OF APPROVAL OF THE CONCEPT PLAN AND USE-ON-REVIEW REFER TO THE METROPOLITAN PLANNING COMMISSIONS FILES 5-20-08-C, 5-20-08-U, 5-31-08-C, AND 5-4-08-U.

"Owner's responsibility only"

- The property owner(s) shall be responsible for maintaining all water facilities on this property. (Instr. No. 2007030008917)
- Reserve maintenance of the drainage facilities is the responsibility of the property owner(s) or property owners association.
- Consultant recorded file no. 2007030008914

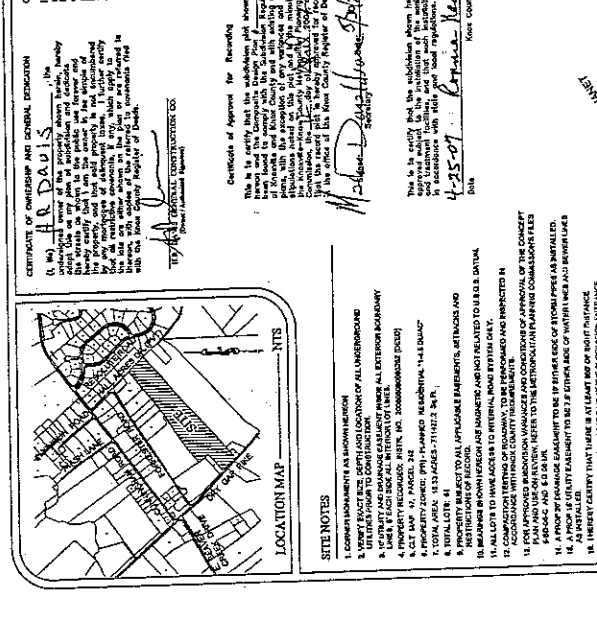
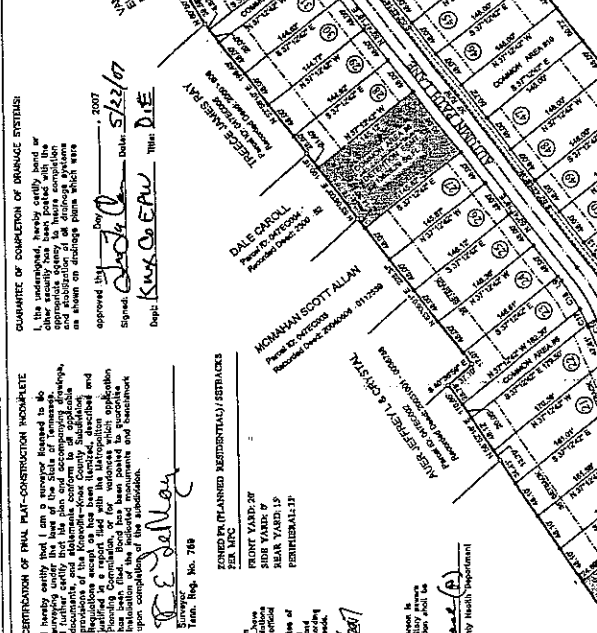
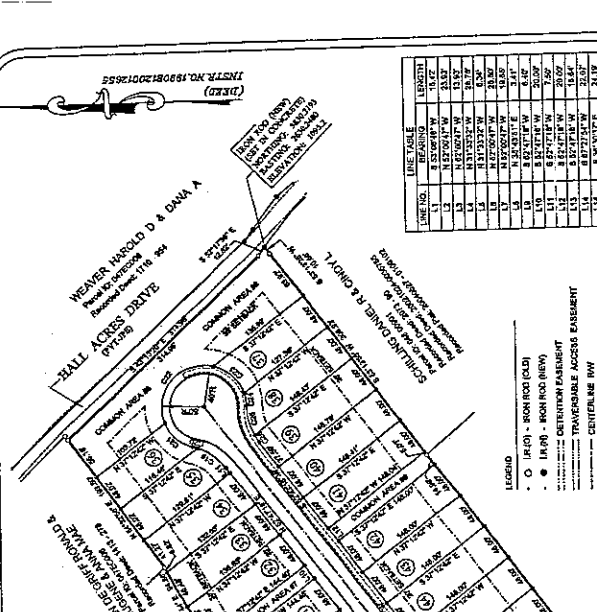


GRAPHIC SCALE
 0 5 10 15 20
 (IN FEET)
 1 inch = 20 ft.

CERTIFICATE OF BONDICATION FOR RECORDING
 This is to certify that the subdivision shown hereon is in accordance with the laws of the State of Tennessee. I have examined the plans and statements and find them to be correct and in accordance with the laws of the State of Tennessee. I have also examined the plans and statements and find them to be correct and in accordance with the laws of the State of Tennessee.

CERTIFICATE OF BONDICATION FOR RECORDING
 This is to certify that the subdivision shown hereon is in accordance with the laws of the State of Tennessee. I have examined the plans and statements and find them to be correct and in accordance with the laws of the State of Tennessee. I have also examined the plans and statements and find them to be correct and in accordance with the laws of the State of Tennessee.

CERTIFICATE OF BONDICATION FOR RECORDING
 This is to certify that the subdivision shown hereon is in accordance with the laws of the State of Tennessee. I have examined the plans and statements and find them to be correct and in accordance with the laws of the State of Tennessee. I have also examined the plans and statements and find them to be correct and in accordance with the laws of the State of Tennessee.



STEEL NOTES

- 1. CONTRACTOR SHALL BE RESPONSIBLE FOR THE DESIGN AND INSTALLATION OF ALL INTERIOR AND EXTERIOR STEEL WORK.
- 2. CONTRACTOR SHALL BE RESPONSIBLE FOR THE DESIGN AND INSTALLATION OF ALL EXTERIOR STEEL WORK.
- 3. CONTRACTOR SHALL BE RESPONSIBLE FOR THE DESIGN AND INSTALLATION OF ALL EXTERIOR STEEL WORK.
- 4. CONTRACTOR SHALL BE RESPONSIBLE FOR THE DESIGN AND INSTALLATION OF ALL EXTERIOR STEEL WORK.

CONTRACTOR'S RESPONSIBILITIES:

1. The contractor shall be responsible for the design and installation of all steel work.
2. The contractor shall be responsible for the design and installation of all steel work.
3. The contractor shall be responsible for the design and installation of all steel work.
4. The contractor shall be responsible for the design and installation of all steel work.

CONTRACTOR'S RESPONSIBILITIES:

1. The contractor shall be responsible for the design and installation of all steel work.
2. The contractor shall be responsible for the design and installation of all steel work.
3. The contractor shall be responsible for the design and installation of all steel work.
4. The contractor shall be responsible for the design and installation of all steel work.

LINE TABLE

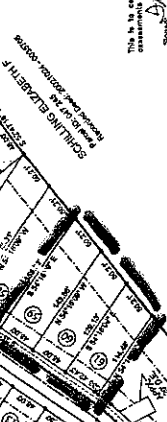
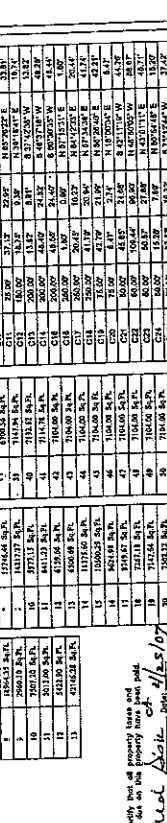
LINE NO.	BEARING	LENGTH
1	S 89° 42' 00" W	115.17
2	N 89° 42' 00" W	115.17
3	S 89° 42' 00" W	115.17
4	N 89° 42' 00" W	115.17
5	S 89° 42' 00" W	115.17
6	N 89° 42' 00" W	115.17
7	S 89° 42' 00" W	115.17
8	N 89° 42' 00" W	115.17
9	S 89° 42' 00" W	115.17
10	N 89° 42' 00" W	115.17
11	S 89° 42' 00" W	115.17
12	N 89° 42' 00" W	115.17
13	S 89° 42' 00" W	115.17
14	N 89° 42' 00" W	115.17
15	S 89° 42' 00" W	115.17
16	N 89° 42' 00" W	115.17
17	S 89° 42' 00" W	115.17
18	N 89° 42' 00" W	115.17
19	S 89° 42' 00" W	115.17
20	N 89° 42' 00" W	115.17
21	S 89° 42' 00" W	115.17
22	N 89° 42' 00" W	115.17
23	S 89° 42' 00" W	115.17
24	N 89° 42' 00" W	115.17
25	S 89° 42' 00" W	115.17
26	N 89° 42' 00" W	115.17
27	S 89° 42' 00" W	115.17
28	N 89° 42' 00" W	115.17
29	S 89° 42' 00" W	115.17
30	N 89° 42' 00" W	115.17

CURVE TABLE

Curve No.	Radius	Chord Length	Chord Bearing	Curve Length
1	115.17	115.17	S 89° 42' 00" W	115.17
2	115.17	115.17	N 89° 42' 00" W	115.17
3	115.17	115.17	S 89° 42' 00" W	115.17
4	115.17	115.17	N 89° 42' 00" W	115.17
5	115.17	115.17	S 89° 42' 00" W	115.17
6	115.17	115.17	N 89° 42' 00" W	115.17
7	115.17	115.17	S 89° 42' 00" W	115.17
8	115.17	115.17	N 89° 42' 00" W	115.17
9	115.17	115.17	S 89° 42' 00" W	115.17
10	115.17	115.17	N 89° 42' 00" W	115.17
11	115.17	115.17	S 89° 42' 00" W	115.17
12	115.17	115.17	N 89° 42' 00" W	115.17
13	115.17	115.17	S 89° 42' 00" W	115.17
14	115.17	115.17	N 89° 42' 00" W	115.17
15	115.17	115.17	S 89° 42' 00" W	115.17
16	115.17	115.17	N 89° 42' 00" W	115.17
17	115.17	115.17	S 89° 42' 00" W	115.17
18	115.17	115.17	N 89° 42' 00" W	115.17
19	115.17	115.17	S 89° 42' 00" W	115.17
20	115.17	115.17	N 89° 42' 00" W	115.17
21	115.17	115.17	S 89° 42' 00" W	115.17
22	115.17	115.17	N 89° 42' 00" W	115.17
23	115.17	115.17	S 89° 42' 00" W	115.17
24	115.17	115.17	N 89° 42' 00" W	115.17
25	115.17	115.17	S 89° 42' 00" W	115.17
26	115.17	115.17	N 89° 42' 00" W	115.17
27	115.17	115.17	S 89° 42' 00" W	115.17
28	115.17	115.17	N 89° 42' 00" W	115.17
29	115.17	115.17	S 89° 42' 00" W	115.17
30	115.17	115.17	N 89° 42' 00" W	115.17

LOT # AREA

Lot #	Area
1	4414.54 S.F.
2	4414.54 S.F.
3	4414.54 S.F.
4	4414.54 S.F.
5	4414.54 S.F.
6	4414.54 S.F.
7	4414.54 S.F.
8	4414.54 S.F.
9	4414.54 S.F.
10	4414.54 S.F.
11	4414.54 S.F.
12	4414.54 S.F.
13	4414.54 S.F.
14	4414.54 S.F.
15	4414.54 S.F.
16	4414.54 S.F.
17	4414.54 S.F.
18	4414.54 S.F.
19	4414.54 S.F.
20	4414.54 S.F.
21	4414.54 S.F.
22	4414.54 S.F.
23	4414.54 S.F.
24	4414.54 S.F.
25	4414.54 S.F.
26	4414.54 S.F.
27	4414.54 S.F.
28	4414.54 S.F.
29	4414.54 S.F.
30	4414.54 S.F.
31	4414.54 S.F.
32	4414.54 S.F.
33	4414.54 S.F.
34	4414.54 S.F.
35	4414.54 S.F.
36	4414.54 S.F.
37	4414.54 S.F.
38	4414.54 S.F.
39	4414.54 S.F.
40	4414.54 S.F.
41	4414.54 S.F.
42	4414.54 S.F.
43	4414.54 S.F.
44	4414.54 S.F.
45	4414.54 S.F.
46	4414.54 S.F.
47	4414.54 S.F.
48	4414.54 S.F.
49	4414.54 S.F.
50	4414.54 S.F.
51	4414.54 S.F.
52	4414.54 S.F.
53	4414.54 S.F.
54	4414.54 S.F.
55	4414.54 S.F.
56	4414.54 S.F.
57	4414.54 S.F.
58	4414.54 S.F.
59	4414.54 S.F.
60	4414.54 S.F.
61	4414.54 S.F.
62	4414.54 S.F.
63	4414.54 S.F.
64	4414.54 S.F.
65	4414.54 S.F.
66	4414.54 S.F.
67	4414.54 S.F.
68	4414.54 S.F.
69	4414.54 S.F.
70	4414.54 S.F.
71	4414.54 S.F.
72	4414.54 S.F.
73	4414.54 S.F.
74	4414.54 S.F.
75	4414.54 S.F.
76	4414.54 S.F.
77	4414.54 S.F.
78	4414.54 S.F.
79	4414.54 S.F.
80	4414.54 S.F.
81	4414.54 S.F.
82	4414.54 S.F.
83	4414.54 S.F.
84	4414.54 S.F.
85	4414.54 S.F.
86	4414.54 S.F.
87	4414.54 S.F.
88	4414.54 S.F.
89	4414.54 S.F.
90	4414.54 S.F.
91	4414.54 S.F.
92	4414.54 S.F.
93	4414.54 S.F.
94	4414.54 S.F.
95	4414.54 S.F.
96	4414.54 S.F.
97	4414.54 S.F.
98	4414.54 S.F.
99	4414.54 S.F.
100	4414.54 S.F.



GUARANTEE OF COMPLETION OF STREETS AND RELATED IMPROVEMENTS

I hereby certify that the survey shown hereon is a true and correct copy of the original survey and that the same was prepared by me or under my direct supervision and that I am a duly licensed Professional Engineer in the State of Tennessee.

DATE: 5/23/12
BY: PHILLIPS
PROJECT: INTERSECTION PLANNING DISTRICT

GUARANTEE OF COMPLETION OF BRIDGE STRUCTURES

I, the undersigned, hereby certify that the survey shown hereon is a true and correct copy of the original survey and that the same was prepared by me or under my direct supervision and that I am a duly licensed Professional Engineer in the State of Tennessee.

DATE: 5/23/12
BY: PHILLIPS
PROJECT: INTERSECTION PLANNING DISTRICT

GUARANTEE OF COMPLETION OF STREETS AND RELATED IMPROVEMENTS

I hereby certify that the survey shown hereon is a true and correct copy of the original survey and that the same was prepared by me or under my direct supervision and that I am a duly licensed Professional Engineer in the State of Tennessee.

DATE: 5/23/12
BY: PHILLIPS
PROJECT: INTERSECTION PLANNING DISTRICT

GUARANTEE OF COMPLETION OF BRIDGE STRUCTURES

I, the undersigned, hereby certify that the survey shown hereon is a true and correct copy of the original survey and that the same was prepared by me or under my direct supervision and that I am a duly licensed Professional Engineer in the State of Tennessee.

DATE: 5/23/12
BY: PHILLIPS
PROJECT: INTERSECTION PLANNING DISTRICT

CONTRACTOR'S RESPONSIBILITIES:

1. The contractor shall be responsible for the design and installation of all steel work.
2. The contractor shall be responsible for the design and installation of all steel work.
3. The contractor shall be responsible for the design and installation of all steel work.
4. The contractor shall be responsible for the design and installation of all steel work.