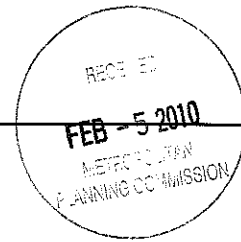


2-B-10-SC-COR-KUB



Knoxville Utilities Board



February 2, 2010

Mr. Ken Pruitt
Knoxville-Knox County
Metropolitan Planning Commission
Suite 403, City-County Building
Knoxville, Tennessee 37902

Dear Mr. Pruitt:

Re: Right-of-Way Closure Request 2-B-10-SC

We have reviewed our records and find that we have existing utility facilities located within the subject right-of-way. The approximate location of these facilities is indicated on the enclosed prints. However, KUB does not release and hereby retains all easements and rights for existing utility facilities, whether or not shown on these prints.

Should this right-of-way be closed, KUB will require the following permanent easement for its utility facility.

Electric – 25 feet on each side of the centerline of the electric line, 50 feet total width
Gas – 7.5 feet on each side of the centerline of the gas line, 15 feet total width
Sewer – 7.5 feet on each side of the centerline of the wastewater line, 15 feet total width
Water – 7.5 feet on each side of the centerline of the water line, 15 feet total width

So long as these conditions are met, KUB has no objection to the closure of this right-of-way. If you have any questions regarding this matter, please call me at (865) 558-2291.

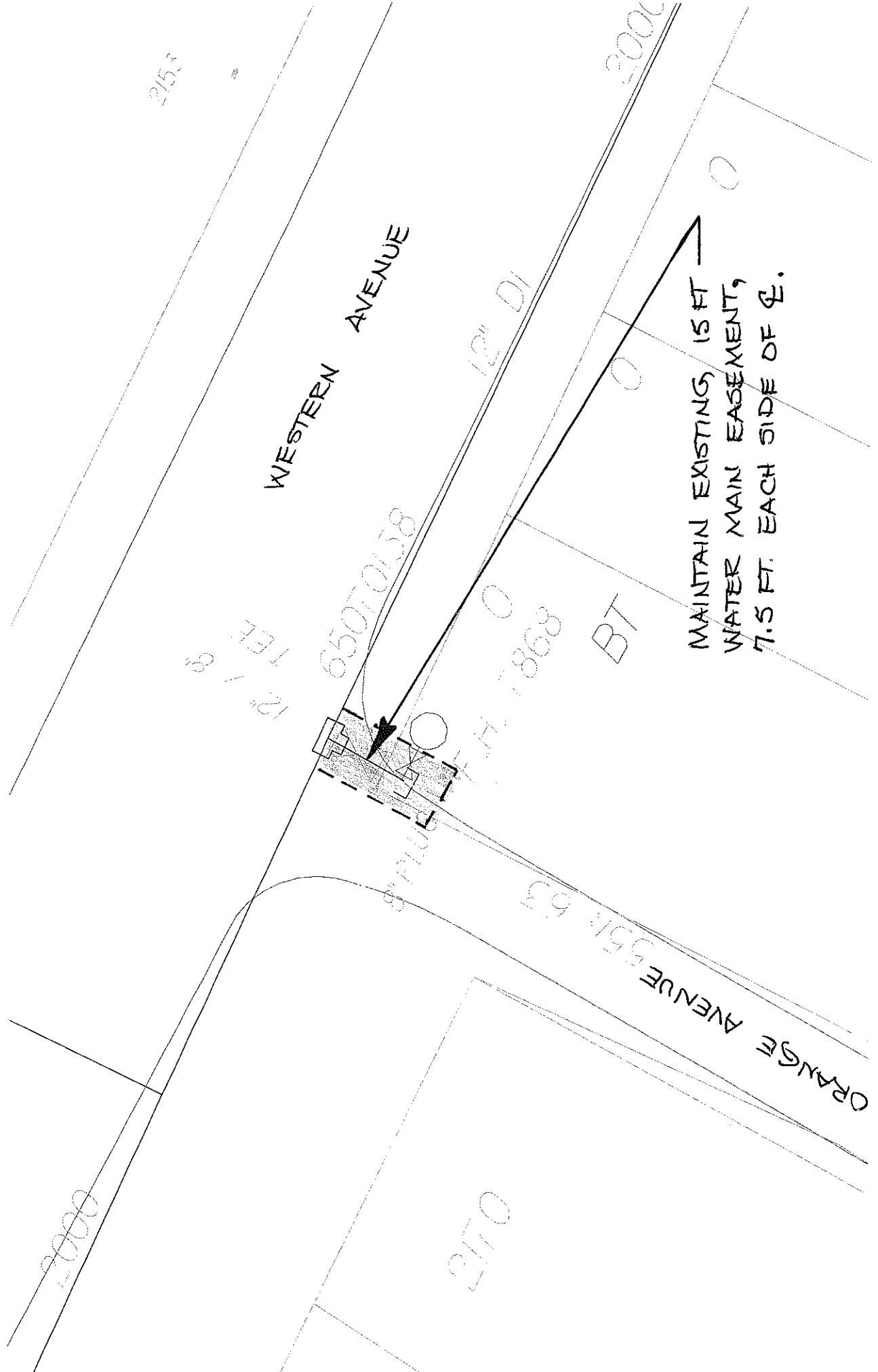
Sincerely,

A handwritten signature in black ink that reads 'Greg Patterson'.

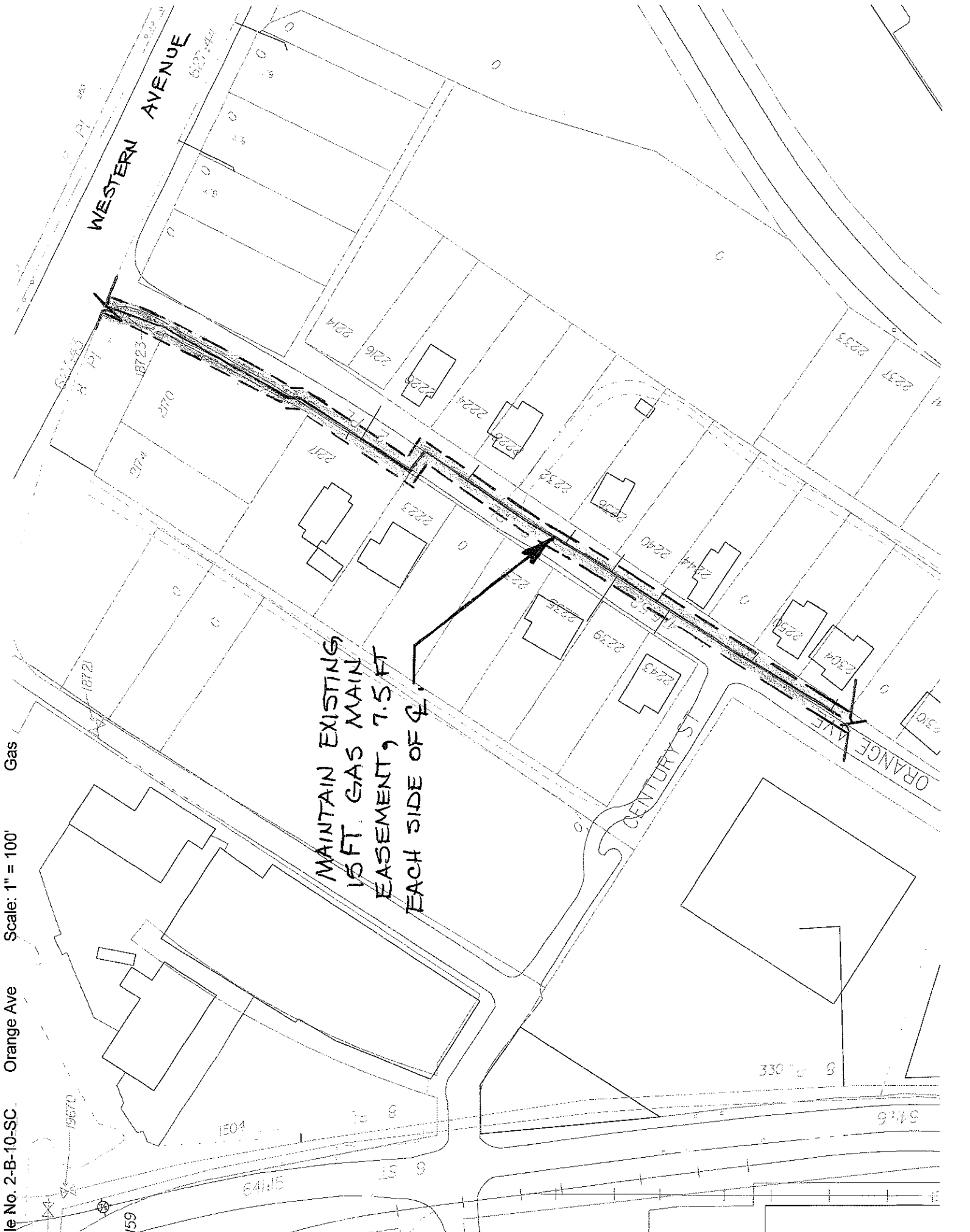
Greg L. Patterson
Engineering

glp/ggt

Enclosure



MAINTAIN EXISTING, 15 FT
 WATER MAIN EASEMENT,
 7.5 FT. EACH SIDE OF \varnothing .



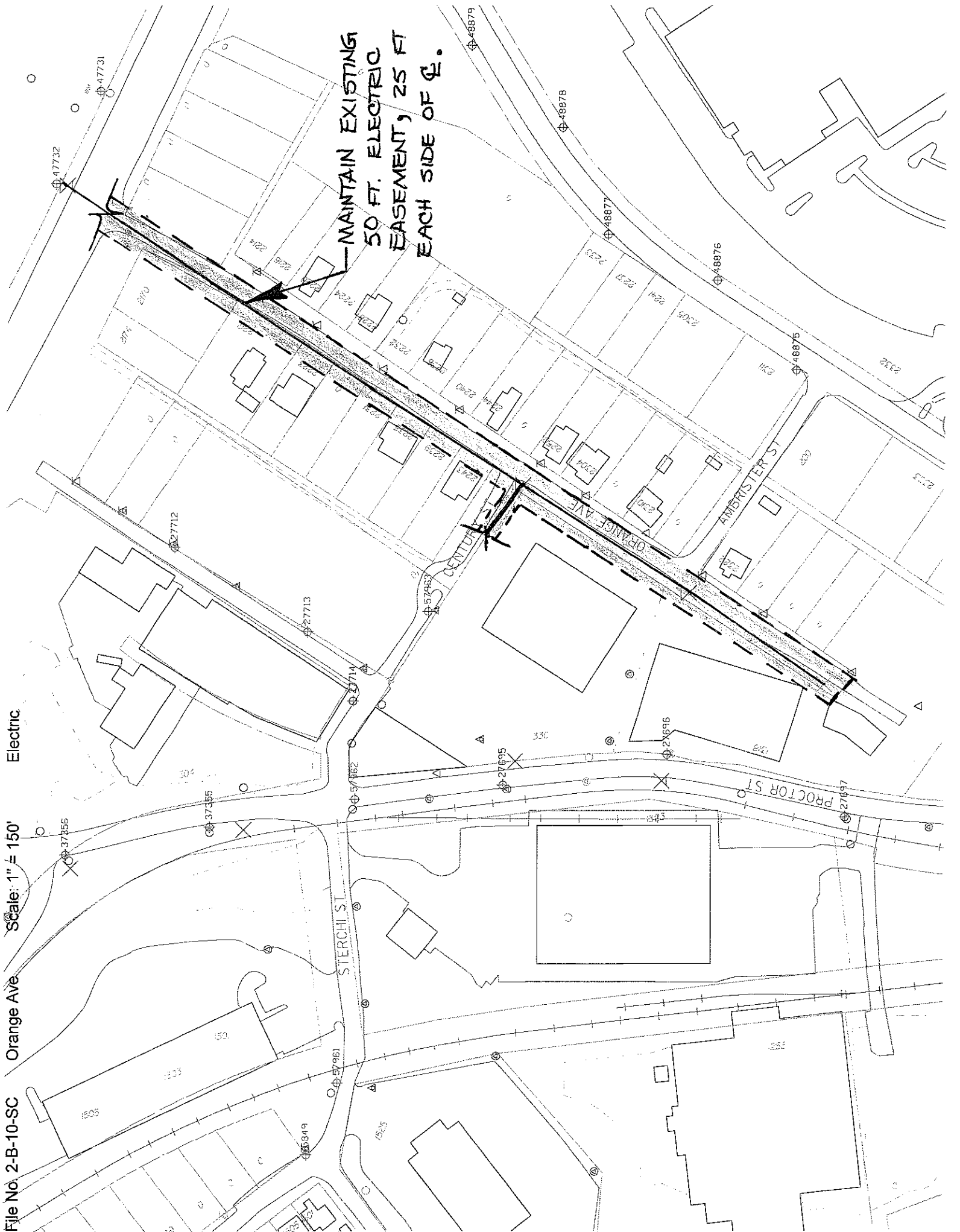
WESTERN AVENUE

CENTURY ST

ORANGE AVE

MAINTAIN EXISTING
15 FT. GAS MAIN
EASEMENT, 7.5 FT
EACH SIDE OF C.

File No. 2-B-10-SC Orange Ave Scale: 1" = 100' Gas



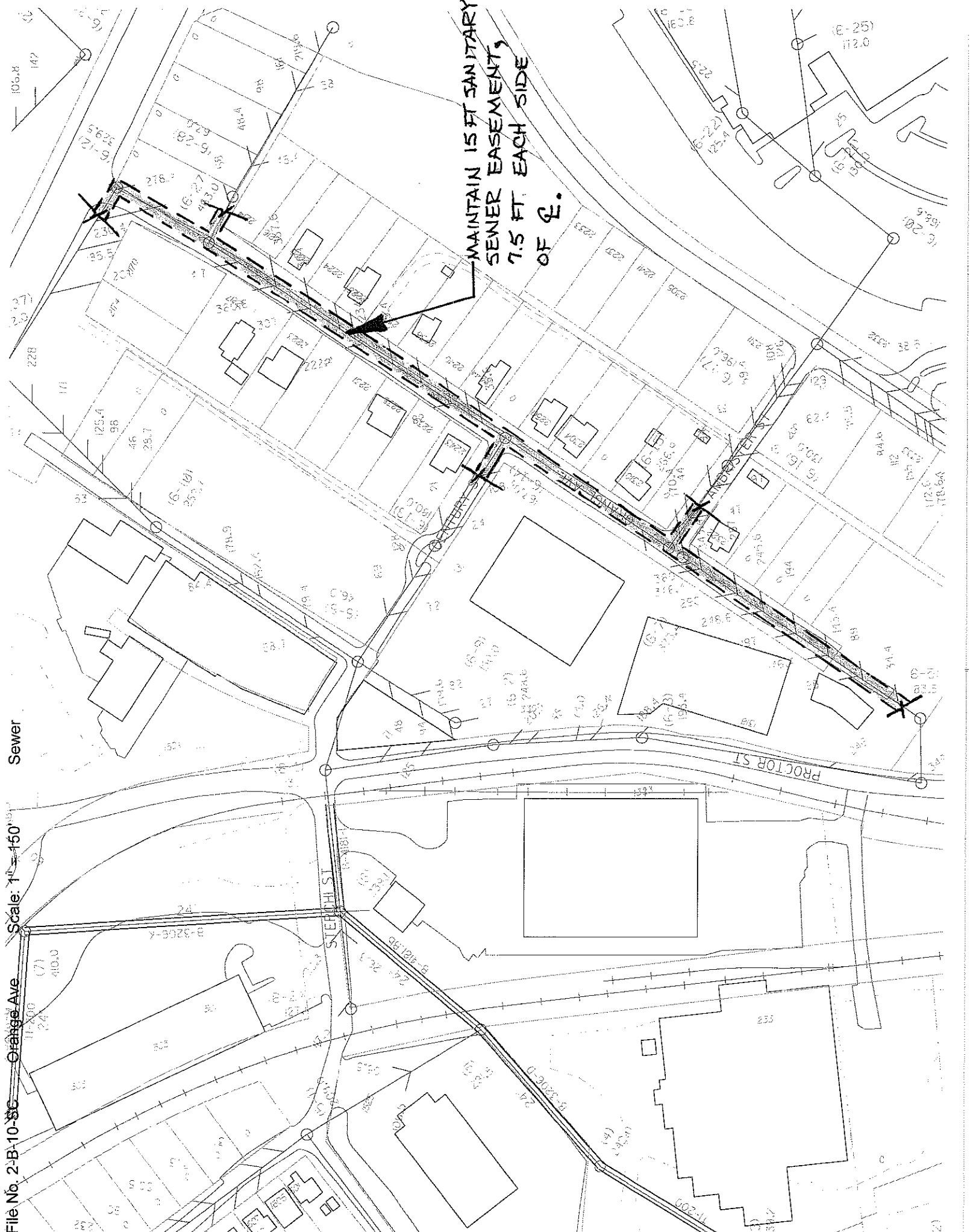
MAINTAIN EXISTING
50 FT. ELECTRIC
EASEMENT, 25 FT
EACH SIDE OF C.

Electric

Scale: 1" = 150'

Orange Ave

File No. 2-B-10-SC



106.8
147

5625
171-91

228

125.4
98

46
25.7

111

11-200
24
410.0
(7)

B-3206-4

11-200
24
410.0
(7)

11-200
24
410.0
(7)

11-200
24
410.0
(7)

11-200
24
410.0
(7)

11-200
24
410.0
(7)

11-200
24
410.0
(7)

11-200
24
410.0
(7)

11-200
24
410.0
(7)

11-200
24
410.0
(7)

11-200
24
410.0
(7)

11-200
24
410.0
(7)

MAINTAIN 15 FT SANITARY
SEWER EASEMENT,
7.5 FT. EACH SIDE
OF $\underline{\text{L}}$.

(E-25)
112.0

(E-20)
102.0

(E-20)
102.0

(E-20)
102.0

(E-20)
102.0

(E-20)
102.0

(E-20)
102.0

(E-20)
102.0

(E-20)
102.0

(E-20)
102.0

(E-20)
102.0

Sewer

Scale: 1" = 150'

File No. 2-B-10-86 Orange Ave

SLEIGHT ST

PROCTOR ST