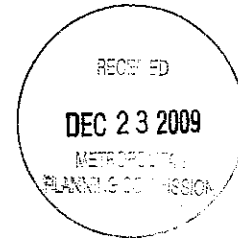


1-A-10-SC - cor - AT&T



December 21, 2009


TO: Metropolitan Planning Commission

FROM: Walter Primm
AT&T
9733 Parkside Dr.
Knoxville, TN 37922

SUBJECT: Lunn Real Estate Investments, Inc -- Closure of Callaway Avenue from Van St. to deadend of property on west. City block 09141 Council District 6, Central City Sector. 1-A-10-SC

AT&T has facilities in this area. The closing will be satisfactory as originally proposed with an easement to maintain and replace our plant as needed in the area in question.

Thank you,


Walter Primm

1-A-10-SC-cor-KUB



Knoxville Utilities Board



December 10, 2009

Mr. Ken Pruitt
Knoxville-Knox County
Metropolitan Planning Commission
Suite 403, City-County Building
Knoxville, Tennessee 37902

Dear Mr. Pruitt:

Re: Right-of-Way Closure Request 1-A-10-SC

We have reviewed our records and find that we have existing utility facilities located within the subject right-of-way. The approximate location of these facilities is indicated on the enclosed prints. However, KUB does not release and hereby retains all easements and rights for existing utility facilities, whether or not shown on these prints.

Should this right-of-way be closed, KUB will require the following permanent easement for its utility facility.

Water – 7.5 feet on each side of the centerline of the water line, 15 feet total width
Sewer – 7.5 feet on each side of the centerline of the wastewater line, 15 feet total width
Electric – 10 feet on each side of the centerline of the electric line, 20 feet total width

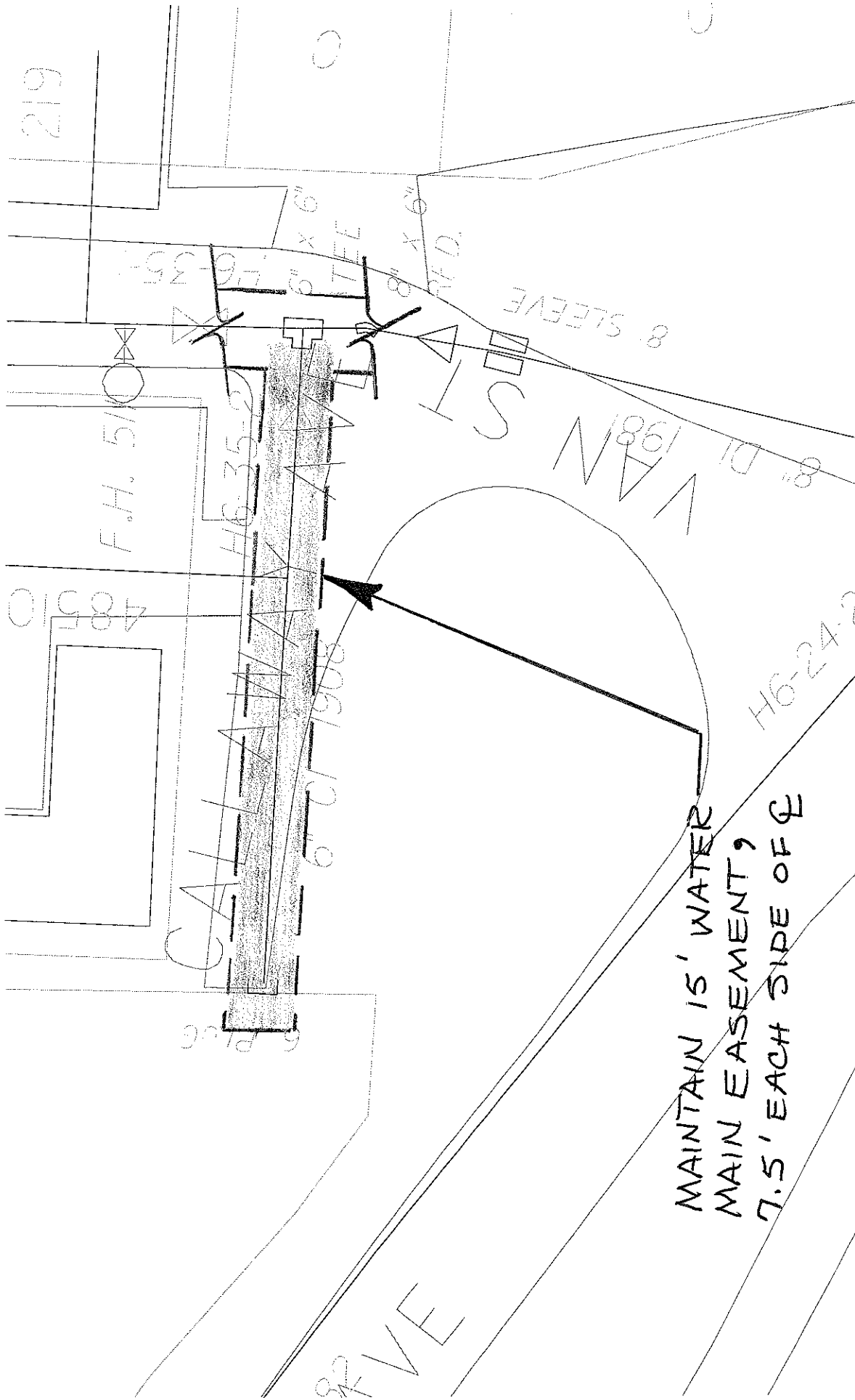
So long as these conditions are met, KUB has no objection to the closure of this right-of-way. If you have any questions regarding this matter, please call me at (865) 558-2291.

Sincerely,

Greg L. Patterson
Engineering

glt/ggt

Enclosure



MAINTAIN 15' WATER
 MAIN EASEMENT,
 7.5' EACH SIDE OF ☐

219

F.H. 510

H6-35-0

6" CI 1500

6" x 6"

8" x 6"

PT.D.

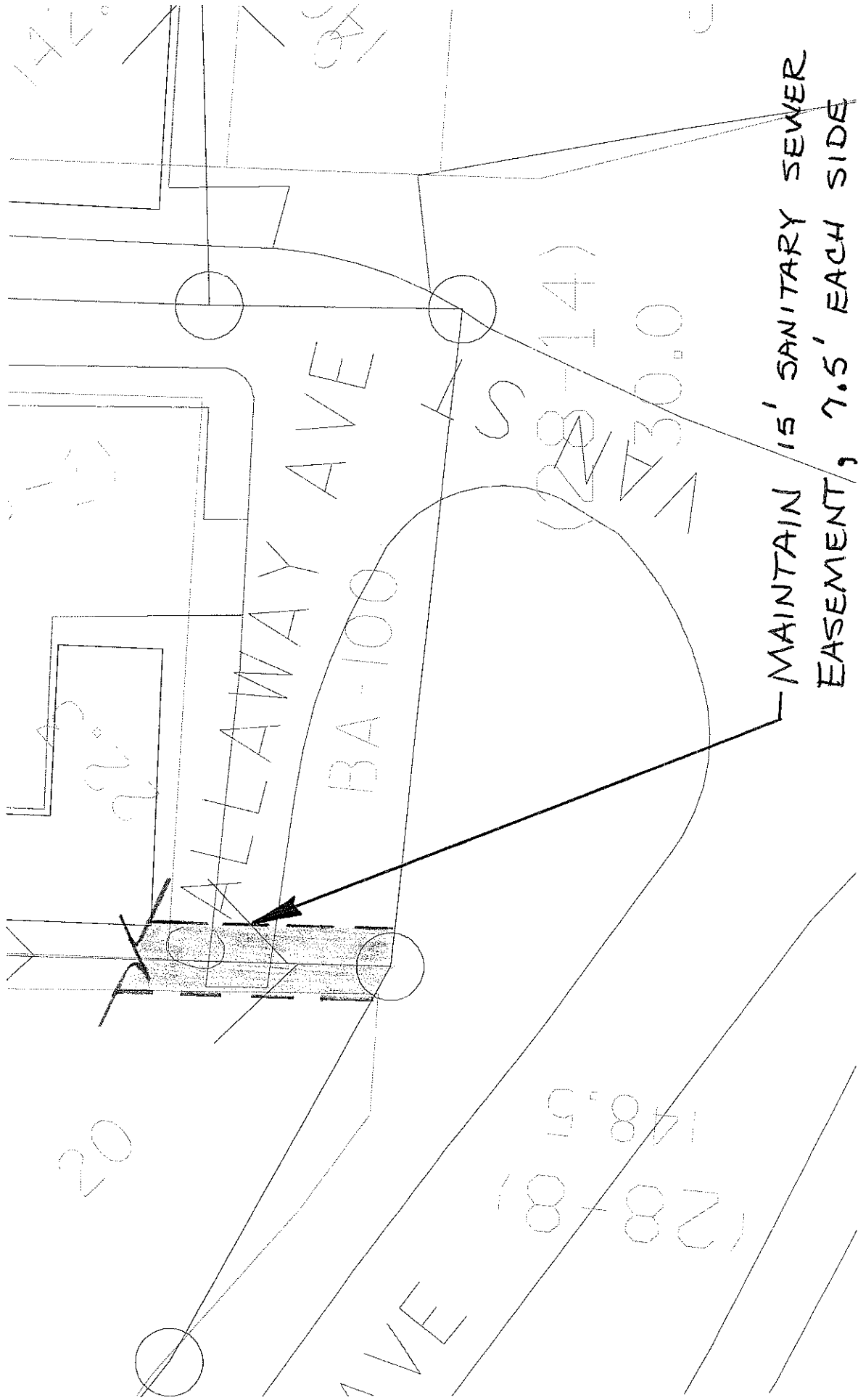
8" SLEEVE

ST

VAN ST

H6-24-0

FIVE



MAINTAIN 15' SANITARY SEWER
 EASEMENT, 7.5' EACH SIDE
 OF C.

