

▶ **FILE #:** 7-D-10-UR **AGENDA ITEM #** 32
 POSTPONEMENT(S): 7/8/2010-9/9/2010 **AGENDA DATE:** 10/14/2010

▶ **APPLICANT:** THE KROGER COMPANY
 OWNER(S):

TAX ID NUMBER: 132 02801

JURISDICTION: City Council District 2

▶ **LOCATION:** North side of Kingston Pk., west side of N. Cedar Bluff Rd.

▶ **APPX. SIZE OF TRACT:** 21.44 acres

SECTOR PLAN: Southwest County

GROWTH POLICY PLAN: Urban Growth Area (Inside City Limits)

ACCESSIBILITY: The primary access to the site will be via N. Cedar Bluff Rd. and Kingston Pk. both of which are 6 lane median divided arterial streets at this location. Another access point is to be via an easement that will tie this site to Market Place Bv.

UTILITIES: Water Source: Knoxville Utilities Board
 Sewer Source: Knoxville Utilities Board

WATERSHED: Ten Mile Creek

▶ **ZONING:** PC-1 (Retail and Office Park) pending

▶ **EXISTING LAND USE:** Vacant land

▶ **PROPOSED USE:** Retail development

HISTORY OF ZONING: The property was zoned SC-3 (Regional Shopping Center) at the time of annexation. An application for PC-1 (Retail and Office Park) District was approved by the Knoxville City council on 6/29/10

SURROUNDING LAND USE AND ZONING:
 North: Retail & motel / C-3 & SC-3 commercial
 South: Cedar Springs Shopping Center / SC commercial
 East: Vacant land / PC-1 commercial
 West: Market Place Commercial Center / SC-3 commercial

NEIGHBORHOOD CONTEXT: This site is located in an area that is dominated by shopping centers and general commercial uses. The zoning in the area is C-3, C-6, SC, SC-3, PC-1 and PC-2 commercial zones.

STAFF RECOMMENDATION:

▶ **APPROVE** the request for a retail shopping center containing up to 138,925 square feet of floor space, a fuel center and the accompanying parking as shown on the development plan subject to 15 conditions

1. Meeting all applicable requirements of the Knoxville Zoning Ordinance
2. Meeting all applicable requirements of the Knoxville Engineering Dept.
3. Meeting all applicable requirements of the Knoxville City Arborist

4. Connection to sanitary sewer and meeting all other applicable requirements of the Knox County Health Dept.
5. Installing all of the proposed landscaping shown on the plan prior to the issuance of an occupancy permit for the building
6. Obtaining a street connection permit from the Tenn. Dept. of Transportation
7. Eliminating the eastern most driveway to Kingston Pk. (between out parcels 3 and 4) and constructing a west bound decel lane per the recommendation of the Tenn. Dept. of Transportation
8. Meeting all other applicable requirements of the Tenn. Dept. of Transportation
9. Construction of a driveway from Market Place Bv to the Kroger site within the 50' wide easement across the Members First Credit Union site (7-H-10-UR, 132-02606) per the Kroger site plan Z-1.1 revised 9/2/10. The cost of design and construction of this driveway is to be born by the each of the parties per their agreement. This driveway construction is to be completed prior to the issuance of an occupancy permit for any business that will rely on the facility for access
10. Installation of the traffic signal on N. Cedar Bluff Rd. and construction of all other road improvements as shown on the development plan prior to the issuance of an occupancy permit per the requirements of the Knoxville City Engineer
11. Supplying MPC staff with a set of protective covenants as called for in the PC-1 (Retail and Distribution Park) zoning district regulations
12. Construction of all sidewalks shown on the development plan. All sidewalks are to be a minimum of 5 feet wide. All sidewalk construction must be ADA compliant.
13. Provision of space for bicycle racks to be scattered along the store fronts. The bicycle racks may be obtained from the Knoxville TPO
14. Meeting all applicable requirements and obtaining all required permits from the Tenn. Dept. of Environment and Conservation
15. A revised site plan reflecting the conditions of approval must be submitted to MPC staff for review and certification prior to obtaining any grading or building permits

COMMENTS:

Kroger is proposing a 96,369 square foot supermarket, 42,330 square feet of small shop space and a fueling center on this 21.44 acre site. The site is located in the northwest quadrant of the intersection of N. Cedar Bluff Rd. and Kingston Pk. Staff has been dealing with representatives from Kroger for months regarding the traffic impact and the needed improvements that will lessen the impact this project will have on the surrounding road network. As a result Kroger is proposing three access points to N. Cedar Bluff Rd. Two of the access points will be right turn in and right turn out only. The other access point on N. Cedar Bluff will require the construction of a traffic signal with all costs associated with the signal installation being born by Kroger.

On the Kingston Pk. frontage Kroger has proposed two access points. The Tennessee Department of Transportation has recommended that the eastern access that is located between out parcels 3 and 4 not be approved. Staff will request the applicant to eliminate that access point from the plan. The second access point on Kingston Pk. will permit both left and right turns into and out of the project. Due to the proximity of other traffic signals in close proximity to this proposed driveway, a traffic signal will not be permitted at this location.

Finally, the site will be getting access to Market Place Bv. At a location north of Kingston Pk. At the time the Market Place Commercial development was approved an access easement was put in place that would permit the construction of a driveway from the Kroger site to Market Place Bv. We are fortunate that the lot the proposed driveway will be crossing has a proposed credit union being planned for that site. Those plans are were on the July 8, 2010 MPC agenda as item number 41 (7-H-10-UR). Representatives from Kroger and Members First have agreed on the design of the proposed driveway access. Staff will recommend that the driveway be constructed as shown on the Kroger site plan dated 9/2/10. Additionally, we will recommend that this driveway be constructed before any business that will use this facility for access be permitted to obtain an occupancy permit.

EFFECT OF THE PROPOSAL ON THE SUBJECT PROPERTY, SURROUNDING PROPERTIES AND THE COMMUNITY AS A WHOLE

1. Public water and sewer utilities are in place to serve this development.
2. With the construction of the road improvements shown on the development plan, the traffic impact of this

development will be minimized.

3. The proposed shopping center is compatible with the scale and intensity with the surrounding development and zoning pattern.

CONFORMITY OF THE PROPOSAL TO CRITERIA ESTABLISHED BY THE KNOXVILLE ZONING ORDINANCE

1. With the final approval of the rezoning of this site, the proposal is consistent with all requirements of the PC-1 zoning district, as well as other criteria for approval of a use on review.
2. The proposed use is consistent with the general standards for uses permitted on review: The proposed development is consistent with the adopted plans and policies of the General Plan and Sector Plan. The use is in harmony with the general purpose and intent of the Zoning Ordinance. The use is compatible with the character of the neighborhood where it is proposed. The use will not draw substantial additional traffic through residential areas.

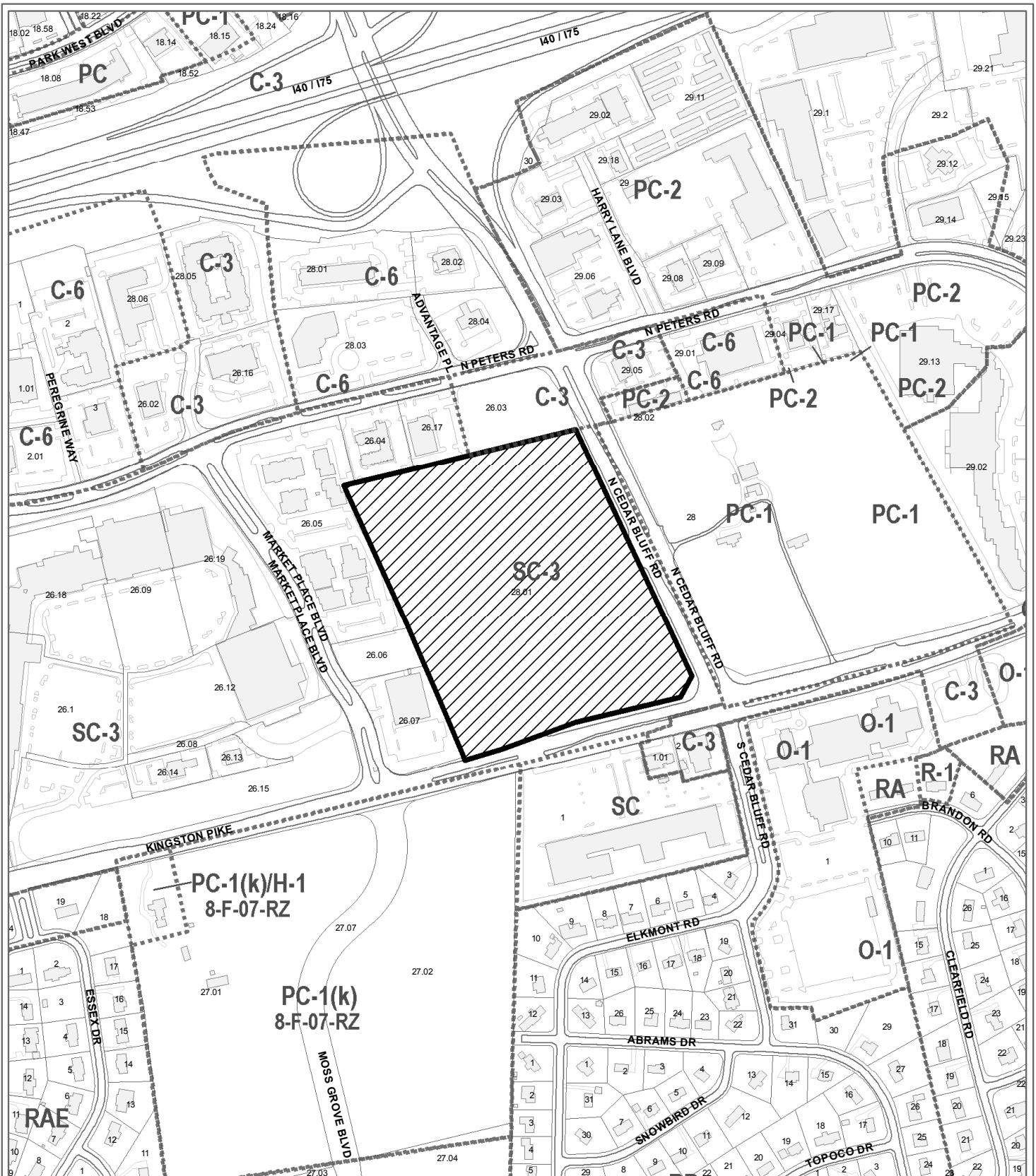
CONFORMITY OF THE PROPOSAL TO ADOPTED MPC PLANS

1. The Knoxville One Year Plan the North City Sector Plan propose commercial use for this site.

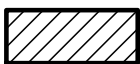
ESTIMATED TRAFFIC IMPACT: Not calculated.

ESTIMATED STUDENT YIELD: Not applicable.

MPC's approval or denial of this request is final, unless the action is appealed to the Knoxville City Council. The date of the Knoxville City Council hearing will depend on when the appeal application is filed. Appellants have 15 days to appeal an MPC decision in the City.



**7-D-10-UR
USE ON REVIEW**



Retail development in PC-1 (Retail and Office Park) pending

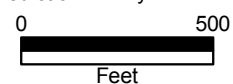
Original Print Date: 6/23/2010
 Metropolitan Planning Commission * City / County Building * Knoxville, TN 37902

Revised:

Petitioner: The Kroger Company

Map No: 132

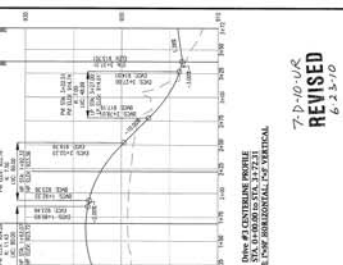
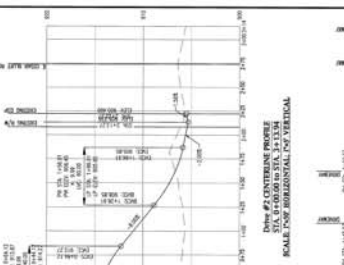
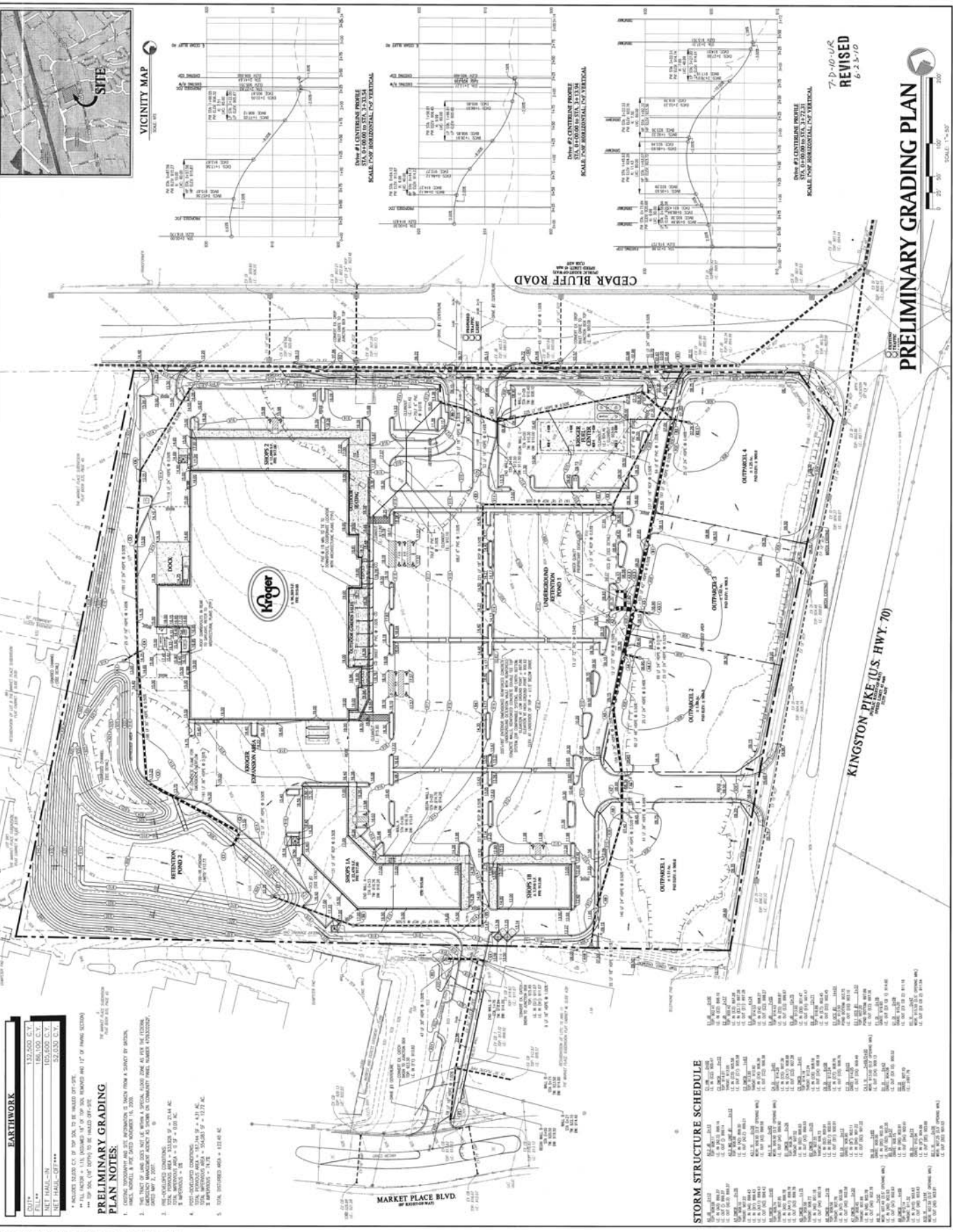
Jurisdiction: City



REVISIONS

1	10.21.10	ADJUSTED MFC COMMENTS
---	----------	-----------------------

20091652.dwg 05.21.10
PRELIMINARY GRADING PLAN
SHEET Z-1.2



7-D-10-02
REVISED
6-2-10

PRELIMINARY GRADING PLAN

SCALE: 1" = 40'

EARTHWORK

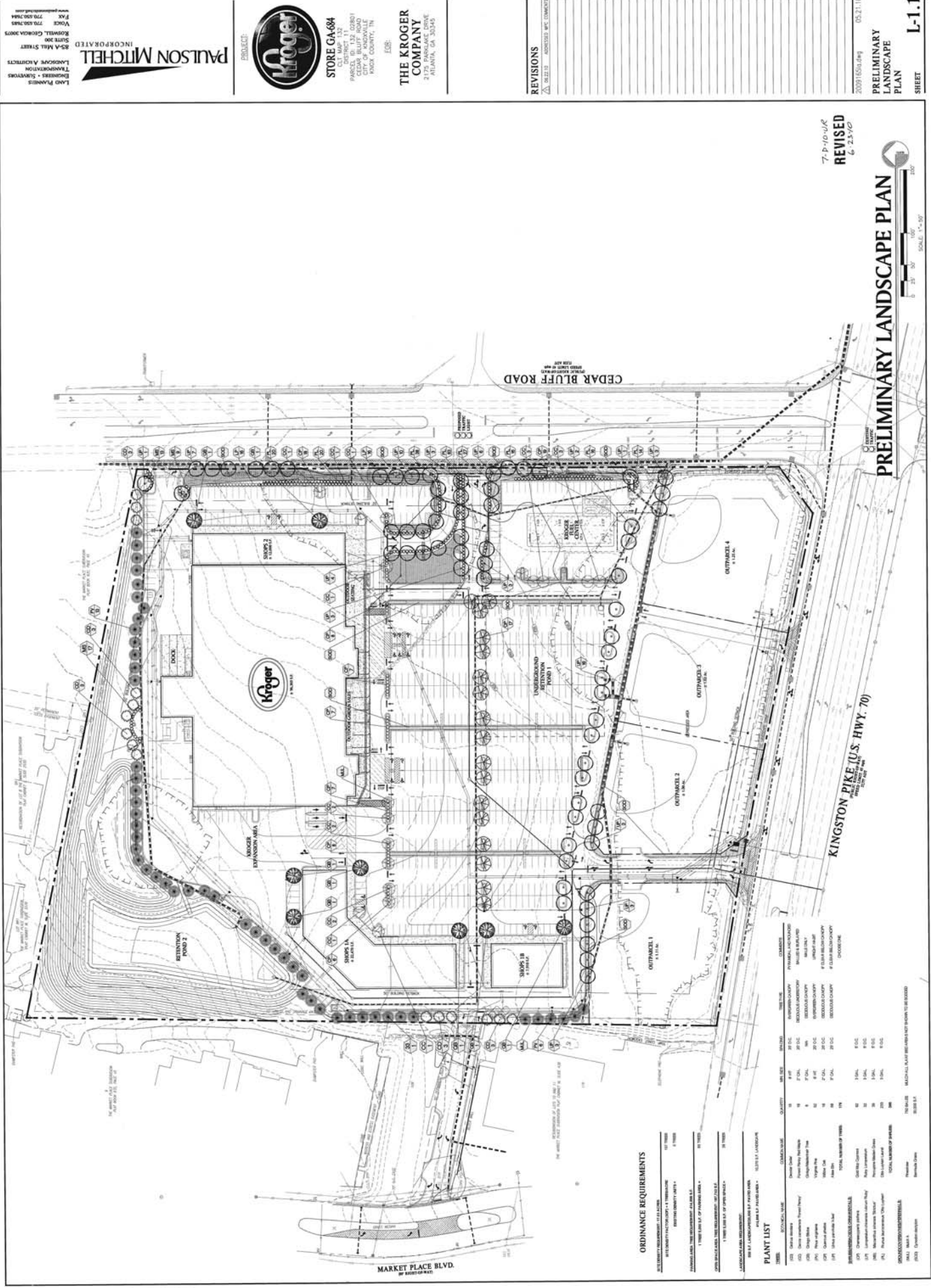
CUT	132,500 C.Y.
FILL	105,800 C.Y.
NET HAUL-IN	27,300 C.Y.
NET HAUL-OUT	27,300 C.Y.

PLAN NOTES

1. ALL GRADES TO BE SHOWN ON THIS PLAN ARE BASED ON THE FINISHED GRADES SHOWN ON THE SURVEY OF 10/2009.
2. THE TRUCK TRAIL SHALL BE LOCATED AS SHOWN ON THE SURVEY OF 10/2009.
3. PRE-ENGINEERED FOUNDATIONS SHALL BE AS SHOWN ON THE SURVEY OF 10/2009.
4. ALL DIMENSIONS SHALL BE AS SHOWN ON THE SURVEY OF 10/2009.
5. TOTAL DISTURBED AREA = 152.48 AC.

STORM STRUCTURE SCHEDULE

NO.	DESCRIPTION	AMOUNT
1	1.00' DIA. STORM MANHOLE	10
2	1.50' DIA. STORM MANHOLE	5
3	2.00' DIA. STORM MANHOLE	3
4	2.50' DIA. STORM MANHOLE	2
5	3.00' DIA. STORM MANHOLE	1
6	3.50' DIA. STORM MANHOLE	1
7	4.00' DIA. STORM MANHOLE	1
8	4.50' DIA. STORM MANHOLE	1
9	5.00' DIA. STORM MANHOLE	1
10	5.50' DIA. STORM MANHOLE	1
11	6.00' DIA. STORM MANHOLE	1
12	6.50' DIA. STORM MANHOLE	1
13	7.00' DIA. STORM MANHOLE	1
14	7.50' DIA. STORM MANHOLE	1
15	8.00' DIA. STORM MANHOLE	1
16	8.50' DIA. STORM MANHOLE	1
17	9.00' DIA. STORM MANHOLE	1
18	9.50' DIA. STORM MANHOLE	1
19	10.00' DIA. STORM MANHOLE	1
20	10.50' DIA. STORM MANHOLE	1
21	11.00' DIA. STORM MANHOLE	1
22	11.50' DIA. STORM MANHOLE	1
23	12.00' DIA. STORM MANHOLE	1
24	12.50' DIA. STORM MANHOLE	1
25	13.00' DIA. STORM MANHOLE	1
26	13.50' DIA. STORM MANHOLE	1
27	14.00' DIA. STORM MANHOLE	1
28	14.50' DIA. STORM MANHOLE	1
29	15.00' DIA. STORM MANHOLE	1
30	15.50' DIA. STORM MANHOLE	1
31	16.00' DIA. STORM MANHOLE	1
32	16.50' DIA. STORM MANHOLE	1
33	17.00' DIA. STORM MANHOLE	1
34	17.50' DIA. STORM MANHOLE	1
35	18.00' DIA. STORM MANHOLE	1
36	18.50' DIA. STORM MANHOLE	1
37	19.00' DIA. STORM MANHOLE	1
38	19.50' DIA. STORM MANHOLE	1
39	20.00' DIA. STORM MANHOLE	1
40	20.50' DIA. STORM MANHOLE	1
41	21.00' DIA. STORM MANHOLE	1
42	21.50' DIA. STORM MANHOLE	1
43	22.00' DIA. STORM MANHOLE	1
44	22.50' DIA. STORM MANHOLE	1
45	23.00' DIA. STORM MANHOLE	1
46	23.50' DIA. STORM MANHOLE	1
47	24.00' DIA. STORM MANHOLE	1
48	24.50' DIA. STORM MANHOLE	1
49	25.00' DIA. STORM MANHOLE	1
50	25.50' DIA. STORM MANHOLE	1
51	26.00' DIA. STORM MANHOLE	1
52	26.50' DIA. STORM MANHOLE	1
53	27.00' DIA. STORM MANHOLE	1
54	27.50' DIA. STORM MANHOLE	1
55	28.00' DIA. STORM MANHOLE	1
56	28.50' DIA. STORM MANHOLE	1
57	29.00' DIA. STORM MANHOLE	1
58	29.50' DIA. STORM MANHOLE	1
59	30.00' DIA. STORM MANHOLE	1
60	30.50' DIA. STORM MANHOLE	1
61	31.00' DIA. STORM MANHOLE	1
62	31.50' DIA. STORM MANHOLE	1
63	32.00' DIA. STORM MANHOLE	1
64	32.50' DIA. STORM MANHOLE	1
65	33.00' DIA. STORM MANHOLE	1
66	33.50' DIA. STORM MANHOLE	1
67	34.00' DIA. STORM MANHOLE	1
68	34.50' DIA. STORM MANHOLE	1
69	35.00' DIA. STORM MANHOLE	1
70	35.50' DIA. STORM MANHOLE	1
71	36.00' DIA. STORM MANHOLE	1
72	36.50' DIA. STORM MANHOLE	1
73	37.00' DIA. STORM MANHOLE	1
74	37.50' DIA. STORM MANHOLE	1
75	38.00' DIA. STORM MANHOLE	1
76	38.50' DIA. STORM MANHOLE	1
77	39.00' DIA. STORM MANHOLE	1
78	39.50' DIA. STORM MANHOLE	1
79	40.00' DIA. STORM MANHOLE	1
80	40.50' DIA. STORM MANHOLE	1
81	41.00' DIA. STORM MANHOLE	1
82	41.50' DIA. STORM MANHOLE	1
83	42.00' DIA. STORM MANHOLE	1
84	42.50' DIA. STORM MANHOLE	1
85	43.00' DIA. STORM MANHOLE	1
86	43.50' DIA. STORM MANHOLE	1
87	44.00' DIA. STORM MANHOLE	1
88	44.50' DIA. STORM MANHOLE	1
89	45.00' DIA. STORM MANHOLE	1
90	45.50' DIA. STORM MANHOLE	1
91	46.00' DIA. STORM MANHOLE	1
92	46.50' DIA. STORM MANHOLE	1
93	47.00' DIA. STORM MANHOLE	1
94	47.50' DIA. STORM MANHOLE	1
95	48.00' DIA. STORM MANHOLE	1
96	48.50' DIA. STORM MANHOLE	1
97	49.00' DIA. STORM MANHOLE	1
98	49.50' DIA. STORM MANHOLE	1
99	50.00' DIA. STORM MANHOLE	1
100	50.50' DIA. STORM MANHOLE	1



PAULSON MITCHELL
INCORPORATED
LAND PLANNERS
ENGINEERS • SURVEYORS
TRANSPORTATION
LANDSCAPE ARCHITECTS
554 HILL STREET
SUITE 300
ROSWELL, GEORGIA 30075
PHONE 770.928.2844
FAX 770.928.2844
www.paulsonmitchell.com



PROJECT:
STORE GA-684
CITY MAP # 132
200916261.DWG
200916261.DWG (CONTRACT)
DATE: 05/21/10

THE KROGER COMPANY
2170 PARKLAK DRIVE
ATLANTA, GA 30345

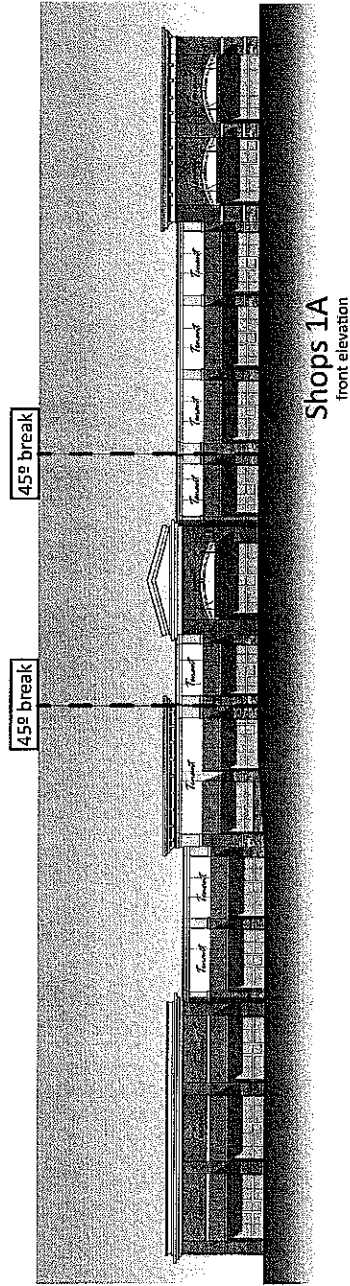
REVISIONS
NO. REVISION DESCRIPTION DATE

ORDINANCE REQUIREMENTS
ALL ELEMENTS SHALL BE IN ACCORDANCE WITH THE CITY OF ATLANTA ORDINANCES.
1. TREE SIZE: 10" DBH MIN.
2. TREE SPACING: 10' MIN.
3. TREE PLANTING: 10' MIN.
4. TREE MAINTENANCE: 10' MIN.
5. TREE REMOVAL: 10' MIN.
6. TREE REPLACEMENT: 10' MIN.
7. TREE PROTECTION: 10' MIN.
8. TREE SURROUNDING: 10' MIN.
9. TREE SPACING: 10' MIN.
10. TREE PLANTING: 10' MIN.
11. TREE MAINTENANCE: 10' MIN.
12. TREE REMOVAL: 10' MIN.
13. TREE REPLACEMENT: 10' MIN.
14. TREE PROTECTION: 10' MIN.
15. TREE SURROUNDING: 10' MIN.
16. TREE SPACING: 10' MIN.
17. TREE PLANTING: 10' MIN.
18. TREE MAINTENANCE: 10' MIN.
19. TREE REMOVAL: 10' MIN.
20. TREE REPLACEMENT: 10' MIN.
21. TREE PROTECTION: 10' MIN.
22. TREE SURROUNDING: 10' MIN.
23. TREE SPACING: 10' MIN.
24. TREE PLANTING: 10' MIN.
25. TREE MAINTENANCE: 10' MIN.
26. TREE REMOVAL: 10' MIN.
27. TREE REPLACEMENT: 10' MIN.
28. TREE PROTECTION: 10' MIN.
29. TREE SURROUNDING: 10' MIN.
30. TREE SPACING: 10' MIN.
31. TREE PLANTING: 10' MIN.
32. TREE MAINTENANCE: 10' MIN.
33. TREE REMOVAL: 10' MIN.
34. TREE REPLACEMENT: 10' MIN.
35. TREE PROTECTION: 10' MIN.
36. TREE SURROUNDING: 10' MIN.
37. TREE SPACING: 10' MIN.
38. TREE PLANTING: 10' MIN.
39. TREE MAINTENANCE: 10' MIN.
40. TREE REMOVAL: 10' MIN.
41. TREE REPLACEMENT: 10' MIN.
42. TREE PROTECTION: 10' MIN.
43. TREE SURROUNDING: 10' MIN.
44. TREE SPACING: 10' MIN.
45. TREE PLANTING: 10' MIN.
46. TREE MAINTENANCE: 10' MIN.
47. TREE REMOVAL: 10' MIN.
48. TREE REPLACEMENT: 10' MIN.
49. TREE PROTECTION: 10' MIN.
50. TREE SURROUNDING: 10' MIN.
51. TREE SPACING: 10' MIN.
52. TREE PLANTING: 10' MIN.
53. TREE MAINTENANCE: 10' MIN.
54. TREE REMOVAL: 10' MIN.
55. TREE REPLACEMENT: 10' MIN.
56. TREE PROTECTION: 10' MIN.
57. TREE SURROUNDING: 10' MIN.
58. TREE SPACING: 10' MIN.
59. TREE PLANTING: 10' MIN.
60. TREE MAINTENANCE: 10' MIN.
61. TREE REMOVAL: 10' MIN.
62. TREE REPLACEMENT: 10' MIN.
63. TREE PROTECTION: 10' MIN.
64. TREE SURROUNDING: 10' MIN.
65. TREE SPACING: 10' MIN.
66. TREE PLANTING: 10' MIN.
67. TREE MAINTENANCE: 10' MIN.
68. TREE REMOVAL: 10' MIN.
69. TREE REPLACEMENT: 10' MIN.
70. TREE PROTECTION: 10' MIN.
71. TREE SURROUNDING: 10' MIN.
72. TREE SPACING: 10' MIN.
73. TREE PLANTING: 10' MIN.
74. TREE MAINTENANCE: 10' MIN.
75. TREE REMOVAL: 10' MIN.
76. TREE REPLACEMENT: 10' MIN.
77. TREE PROTECTION: 10' MIN.
78. TREE SURROUNDING: 10' MIN.
79. TREE SPACING: 10' MIN.
80. TREE PLANTING: 10' MIN.
81. TREE MAINTENANCE: 10' MIN.
82. TREE REMOVAL: 10' MIN.
83. TREE REPLACEMENT: 10' MIN.
84. TREE PROTECTION: 10' MIN.
85. TREE SURROUNDING: 10' MIN.
86. TREE SPACING: 10' MIN.
87. TREE PLANTING: 10' MIN.
88. TREE MAINTENANCE: 10' MIN.
89. TREE REMOVAL: 10' MIN.
90. TREE REPLACEMENT: 10' MIN.
91. TREE PROTECTION: 10' MIN.
92. TREE SURROUNDING: 10' MIN.
93. TREE SPACING: 10' MIN.
94. TREE PLANTING: 10' MIN.
95. TREE MAINTENANCE: 10' MIN.
96. TREE REMOVAL: 10' MIN.
97. TREE REPLACEMENT: 10' MIN.
98. TREE PROTECTION: 10' MIN.
99. TREE SURROUNDING: 10' MIN.
100. TREE SPACING: 10' MIN.

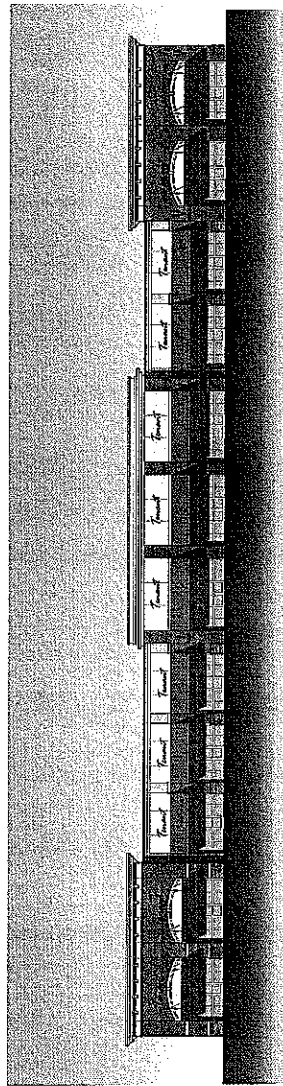
PLANT LIST
NO. QUANTITY COMMENTS
1. 10' DBH TREE
2. 8' DBH TREE
3. 6' DBH TREE
4. 4' DBH TREE
5. 2' DBH TREE
6. 1' DBH TREE
7. 1/2' DBH TREE
8. 1/4' DBH TREE
9. 1/8' DBH TREE
10. 1/4" DBH TREE
11. 1/8" DBH TREE
12. 1/4" DBH TREE
13. 1/8" DBH TREE
14. 1/4" DBH TREE
15. 1/8" DBH TREE
16. 1/4" DBH TREE
17. 1/8" DBH TREE
18. 1/4" DBH TREE
19. 1/8" DBH TREE
20. 1/4" DBH TREE
21. 1/8" DBH TREE
22. 1/4" DBH TREE
23. 1/8" DBH TREE
24. 1/4" DBH TREE
25. 1/8" DBH TREE
26. 1/4" DBH TREE
27. 1/8" DBH TREE
28. 1/4" DBH TREE
29. 1/8" DBH TREE
30. 1/4" DBH TREE
31. 1/8" DBH TREE
32. 1/4" DBH TREE
33. 1/8" DBH TREE
34. 1/4" DBH TREE
35. 1/8" DBH TREE
36. 1/4" DBH TREE
37. 1/8" DBH TREE
38. 1/4" DBH TREE
39. 1/8" DBH TREE
40. 1/4" DBH TREE
41. 1/8" DBH TREE
42. 1/4" DBH TREE
43. 1/8" DBH TREE
44. 1/4" DBH TREE
45. 1/8" DBH TREE
46. 1/4" DBH TREE
47. 1/8" DBH TREE
48. 1/4" DBH TREE
49. 1/8" DBH TREE
50. 1/4" DBH TREE
51. 1/8" DBH TREE
52. 1/4" DBH TREE
53. 1/8" DBH TREE
54. 1/4" DBH TREE
55. 1/8" DBH TREE
56. 1/4" DBH TREE
57. 1/8" DBH TREE
58. 1/4" DBH TREE
59. 1/8" DBH TREE
60. 1/4" DBH TREE
61. 1/8" DBH TREE
62. 1/4" DBH TREE
63. 1/8" DBH TREE
64. 1/4" DBH TREE
65. 1/8" DBH TREE
66. 1/4" DBH TREE
67. 1/8" DBH TREE
68. 1/4" DBH TREE
69. 1/8" DBH TREE
70. 1/4" DBH TREE
71. 1/8" DBH TREE
72. 1/4" DBH TREE
73. 1/8" DBH TREE
74. 1/4" DBH TREE
75. 1/8" DBH TREE
76. 1/4" DBH TREE
77. 1/8" DBH TREE
78. 1/4" DBH TREE
79. 1/8" DBH TREE
80. 1/4" DBH TREE
81. 1/8" DBH TREE
82. 1/4" DBH TREE
83. 1/8" DBH TREE
84. 1/4" DBH TREE
85. 1/8" DBH TREE
86. 1/4" DBH TREE
87. 1/8" DBH TREE
88. 1/4" DBH TREE
89. 1/8" DBH TREE
90. 1/4" DBH TREE
91. 1/8" DBH TREE
92. 1/4" DBH TREE
93. 1/8" DBH TREE
94. 1/4" DBH TREE
95. 1/8" DBH TREE
96. 1/4" DBH TREE
97. 1/8" DBH TREE
98. 1/4" DBH TREE
99. 1/8" DBH TREE
100. 1/4" DBH TREE

PRELIMINARY LANDSCAPE PLAN
7-10-08 REVISED 6-23-08
SCALE: 1"=30'
SHEET L-1.1

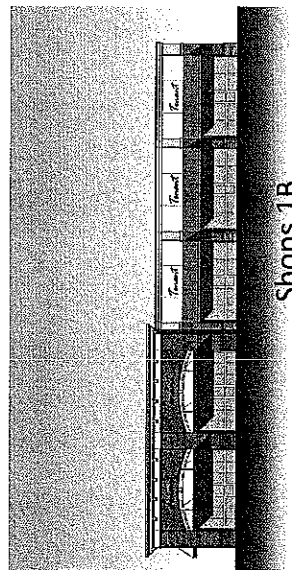
MARKET PLACE BLVD.
CEDAR BLUFF ROAD
KINGSTON PIKE (U.S. HWY. 70)



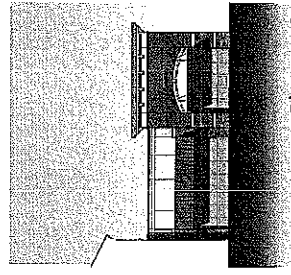
Shops 1A
front elevation



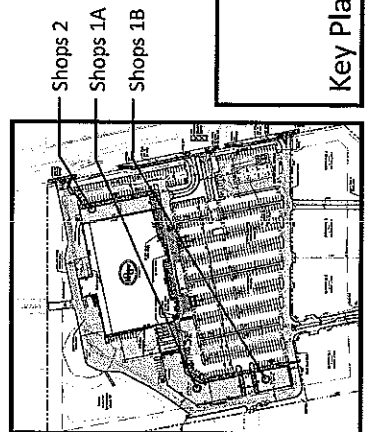
Shops 2
front elevation



Shops 1B
front elevation



Shops 2
side elevation



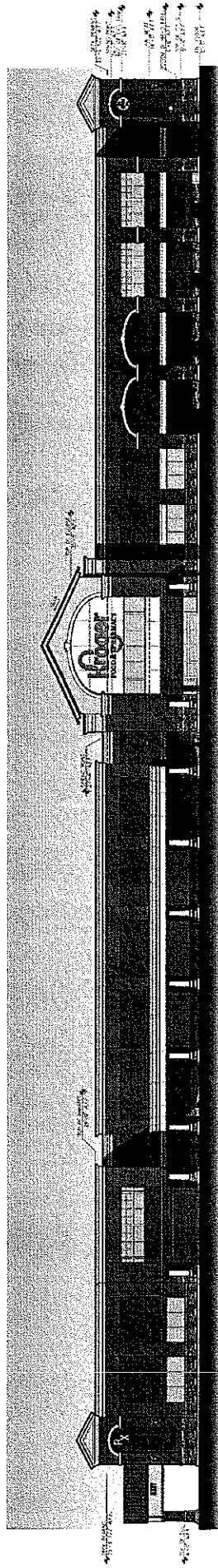
Key Plan

7-D-10-UR

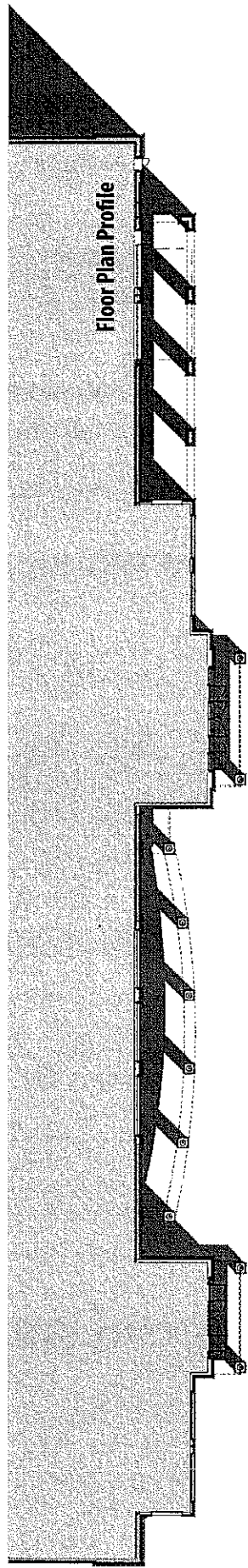
Shops @ Kroger GA.684 - Knoxville, TN

Robertson Loia Roof
Architects & Engineers
3460 Preston Ridge Road / Suite 275
Alpharetta, GA 30057 / Ph. (770)674-2600
Project: 10-158





Elevation



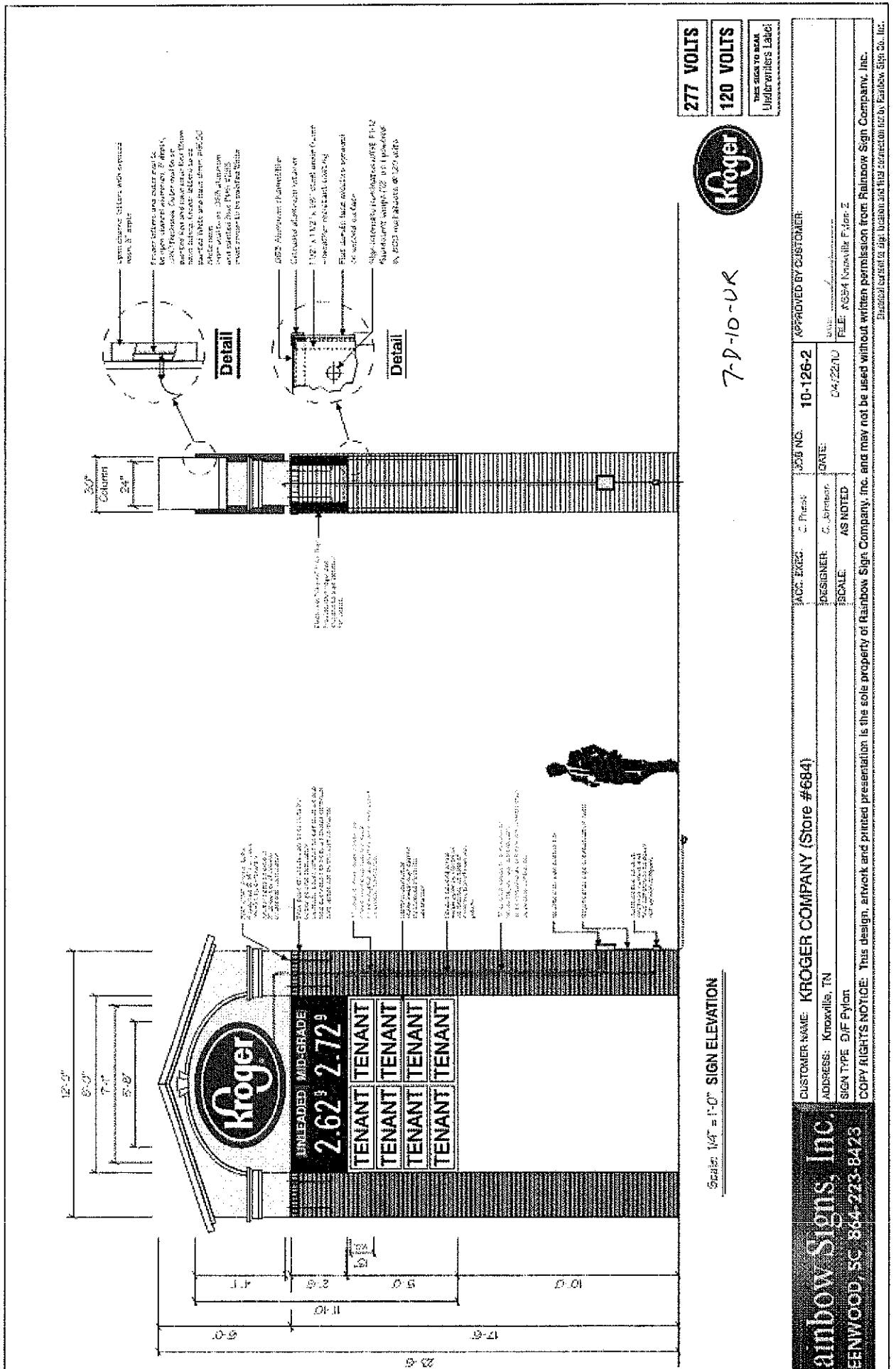
Floor Plan Profile

7-D-10-UR

Kroger GA-684 / Knoxville, TN

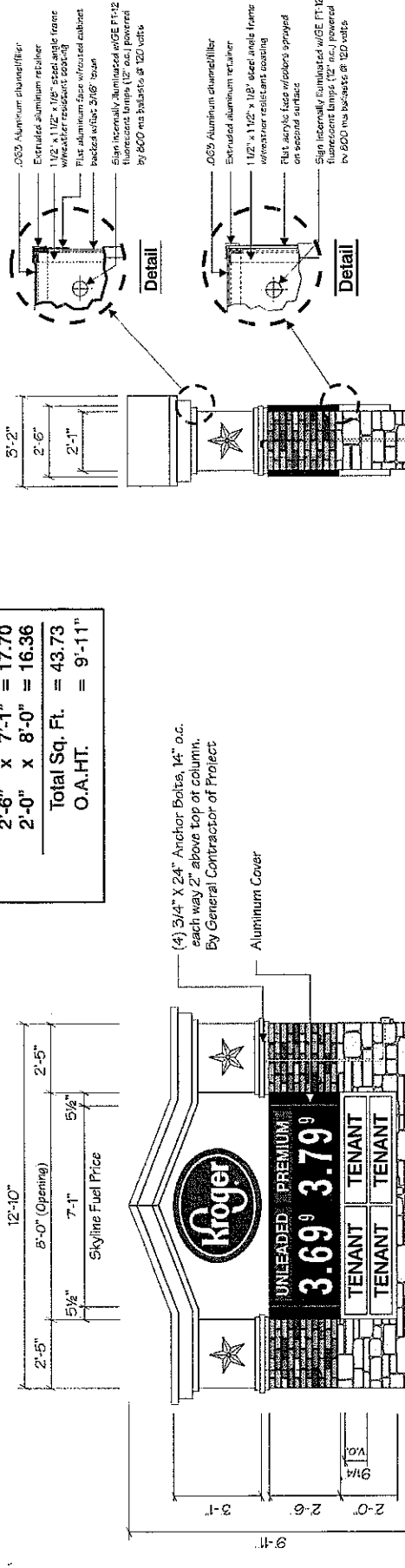
Robertson Loia Roof
Architects & Engineers
3460 Preston Ridges Road / Suite 275
Alpharetta, GA. 30005 / Ph. (770)574-2600
Project: 10-158





150 Sq. Ft. Maximum

$$\begin{aligned}
 & (\frac{1}{2} \times 3.1) \times (\frac{1}{2} \times 4.0) \times 3.14 \\
 & = 1.54 \times 2.00 \times 3.14 = 9.67 \\
 & 2.6 \times 7.1 = 17.70 \\
 & 2.0 \times 8.0 = 16.36 \\
 & \text{Total Sq. Ft.} = 43.73 \\
 & \text{O.A.H.T.} = 9.11"
 \end{aligned}$$



Scale: 1/4" = 1'-0" SIGN ELEVATION

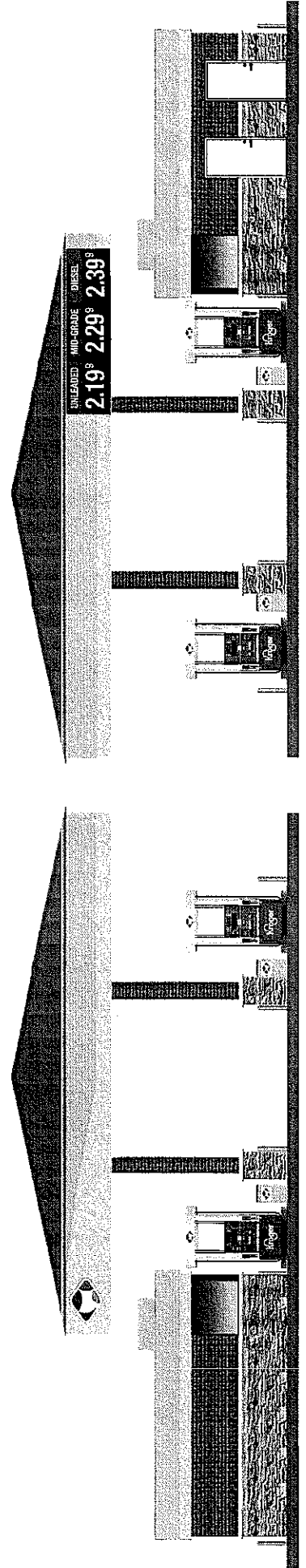
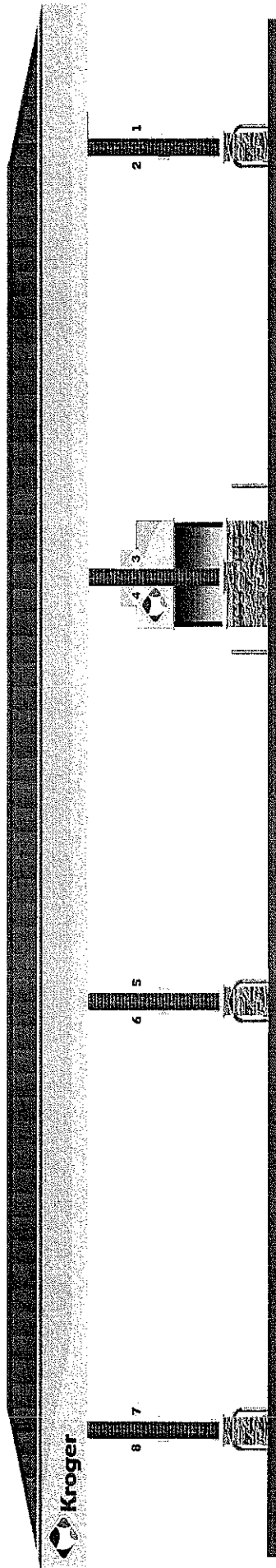
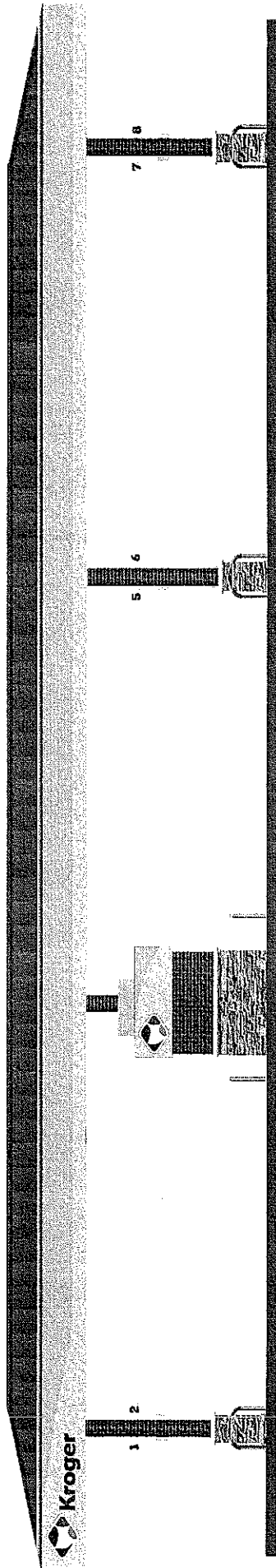
One (1) 20 amp circuit
@ 277 volts required

7-D-10-UR

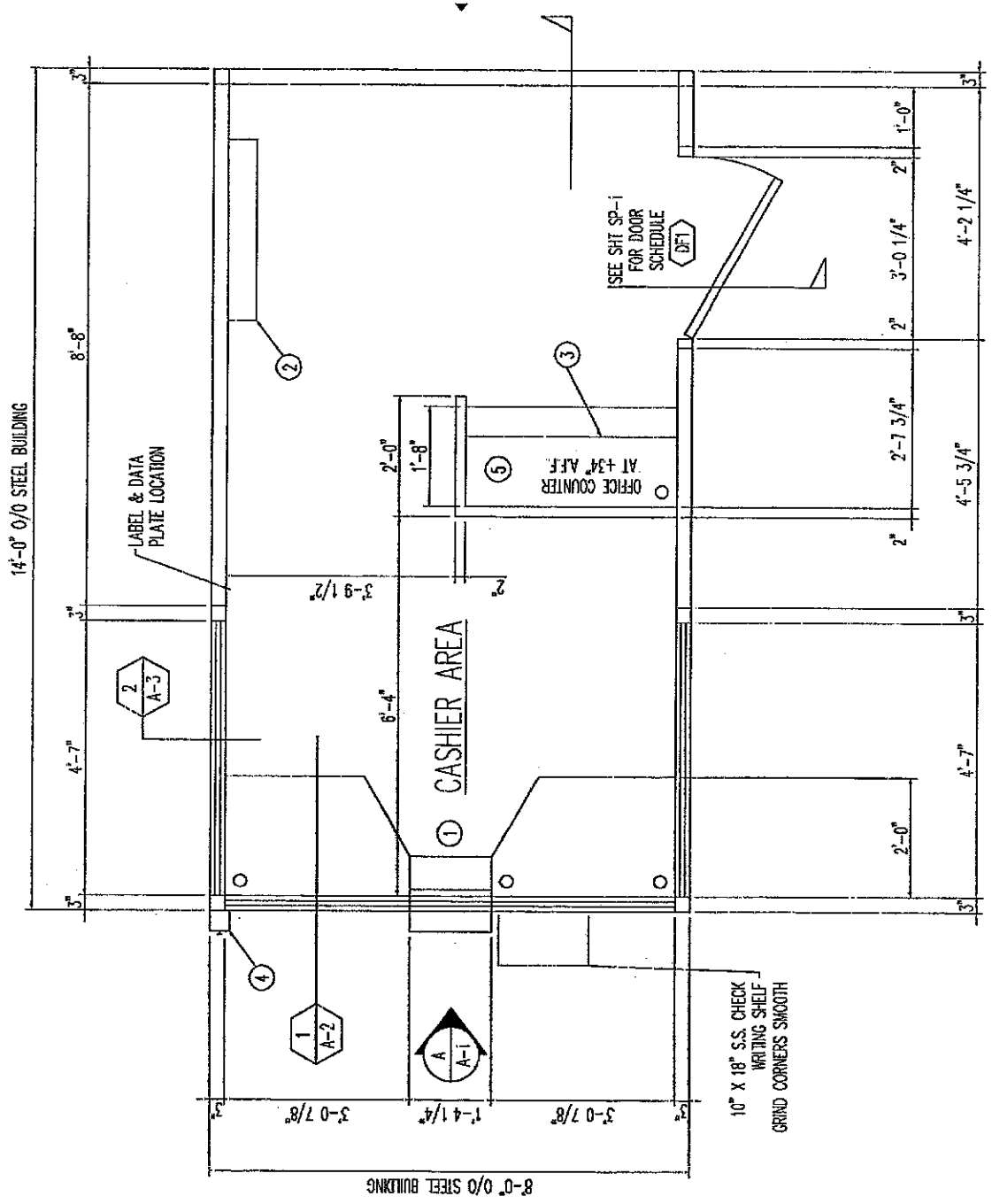
120 VOLTS

THIS SIGN TO BEAR
Underwriters Label

Rainbow Signs, Inc. GREENWOOD, SC 864-223-8423	CUSTOMER NAME: KROGER COMPANY (Store #684) ADDRESS: Kingston Pike and Cedar Bluff, Knoxville, TN SIGN TYPE: Monument Sign	ACC. EXEC: J. Caputo DESIGNER: C. Johnson SCALE: AS NOTED	JOB NO. 08-307 DATE: 06/04/08 FILE: #684 Monument Sign	APPROVED BY CUSTOMER:
	COPY RIGHTS NOTICE: This design, artwork and printed presentation is the sole property of Rainbow Sign Company, Inc. and may not be used without written permission from Rainbow Sign Company, Inc. Electrical current to sign location and lead connection not by Rainbow Sign Co., Inc.			



7-D-10-UR



7-D-10-UR

MAIN BRANCH OAK RIDGE
PO BOX 6828
112 ADMINISTRATION ROAD
OAK RIDGE TN 37831
865/482-4343 FAX 865/482-2617



September 29, 2010



Mr. Dan Kelly
Knoxville, Knox County MPC
Ste. 403, City County Bldg.
400 Main Street
Knoxville, TN 37902

Re: Bldg. Permit/Tenn. Memb. 1st FCU

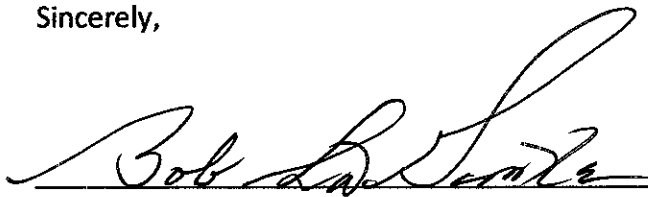
7-D-10-UR

Dear Mr. Kelly:

The purpose of this letter is to inform you that Tennessee Members 1st Federal Credit Union has agreed with the design of the road in the fifty foot easement serving their and Kroger's property as described by Paulson Mitchell Inc. on their site plan drawing sheet Z-1.1 which illustrates three (3) revisions in the revision column. The road is illustrated at a scale of 1" = 50'. The latest revision shown is (Number 3 in a triangle, dated 09.02.10 – Kroger Comments).

This document was submitted to Tennessee Members 1st on September 3, 2010 by email to our office and to our architect George H. Allan AIA.

Sincerely,


(Bob LaGanke, Pres./CEO, Tennessee Members 1st FCU)

SEP 29, 2010
(Date)