



4-A-11-SC-COR-KUB

Knoxville Utilities Board



March 21, 2011

Mr. Mike Brusseau  
Knoxville-Knox County  
Metropolitan Planning Commission  
Suite 403, City-County Building  
Knoxville, Tennessee 37902

Dear Mr. Brusseau:

**Re: Right-of-Way Closure Request 4-A-11-SC  
Block No. 36500  
CLT No. 58**

We have reviewed our records and find that we have existing utility facilities located within the subject right-of-way. The approximate location of these facilities is indicated on the enclosed prints. However, KUB does not release and hereby retains all easements and rights for existing utility facilities, whether or not shown on these prints.

Should this right-of-way be closed, KUB will require the following permanent easement for its utility facility.

Sewer – 7.5 feet on each side of the centerline of the wastewater line, 15 feet total width  
Water – 7.5 feet on each side of the centerline of the water line, 15 feet total width

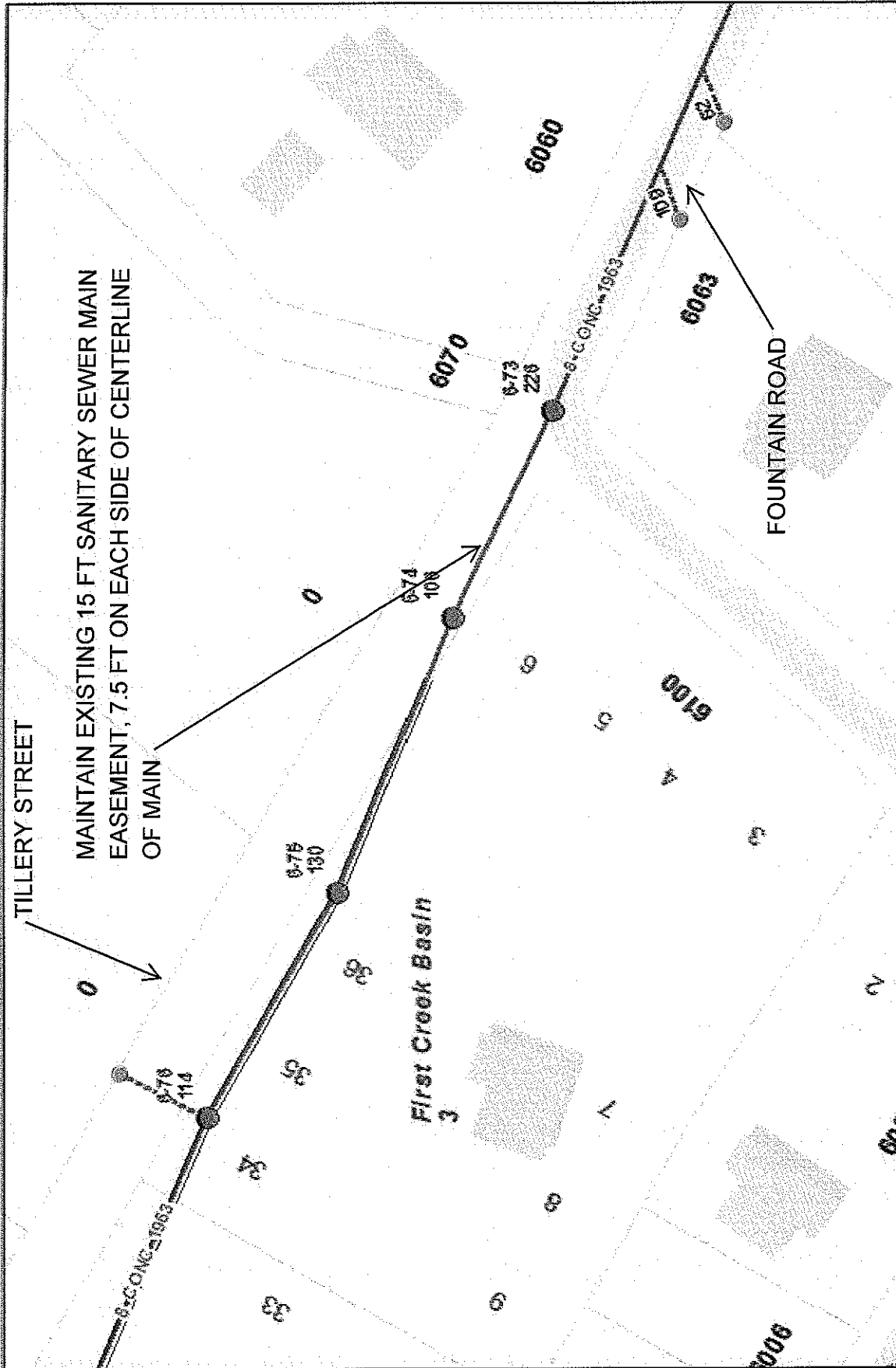
So long as these conditions are met, KUB has no objection to the closure of this right-of-way. If you have any questions regarding this matter, please call me at (865) 558-2291.

Sincerely,

Greg L. Patterson, P.E.  
Engineering

glp/ggt

Enclosure



KYOKAHE LINDSEY BEARD  
 Product Warranty: This map was produced from the Landbase Information system maintained by KUB. This map should not be relied on for engineering, design, or surveying work or other similar type uses. The information on this map is stated and has no warranty of merchantability or warranty for fitness of use for a particular purpose, express or implied. This map is produced, printed, and distributed as is, with all faults.

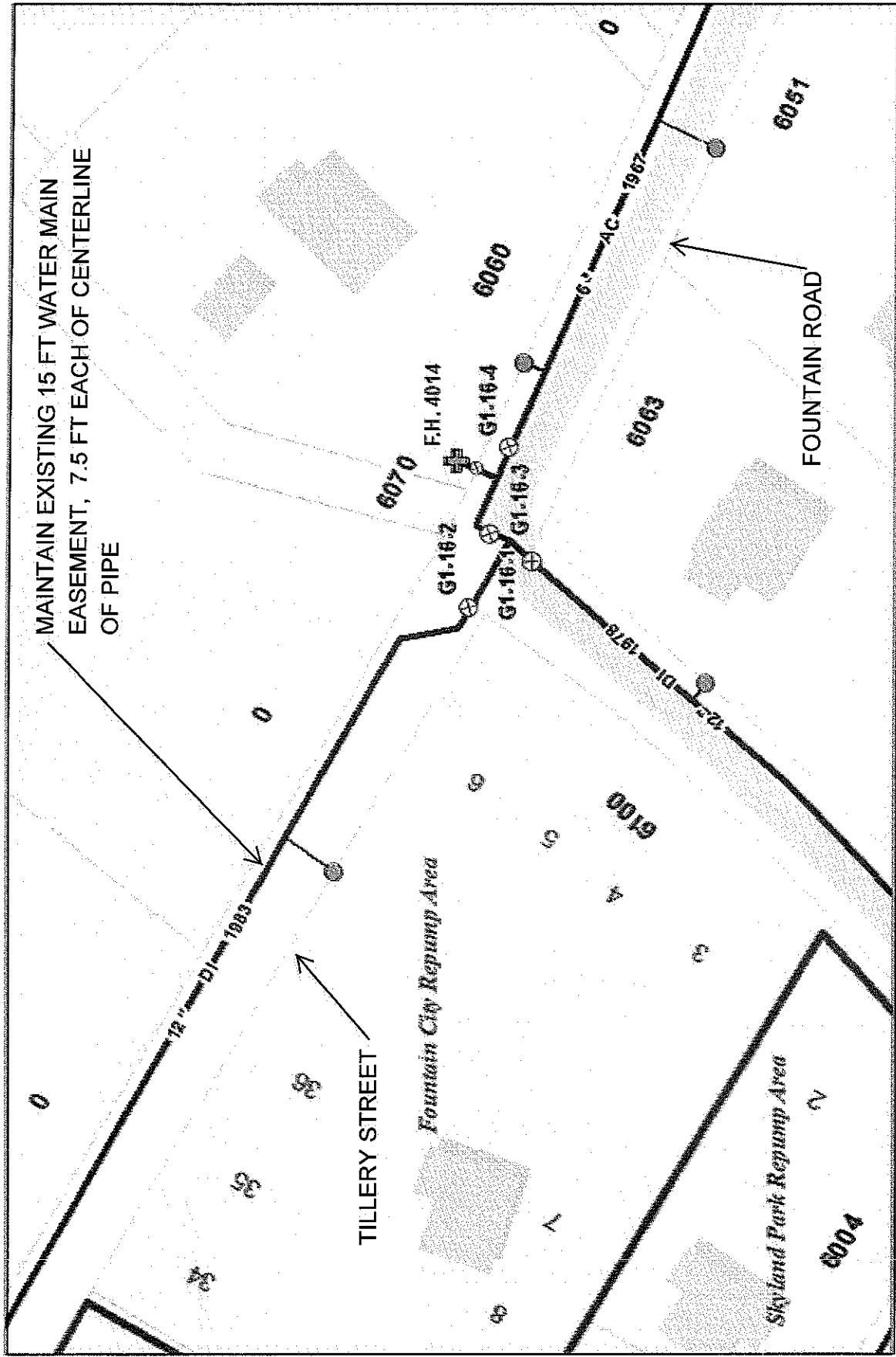
### Closure of Tillery Street 350' NW ROW from Fountain Rd Intersection

File No. 4-A-11-50 CLT No. 58 City Block No. 38500 Ward 36 Sewer Utility



Printed: 03/12/2011 10:33 AM





MAINTAIN EXISTING 15 FT WATER MAIN EASEMENT, 7.5 FT EACH OF CENTERLINE OF PIPE

TILLERY STREET

Fountain City Repump Area

Skyland Park Repump Area

FOUNTAIN ROAD



Knowlton Underhill Blair  
 Product Warning: This map was produced from the Landbase Information system maintained by KUB. This map should not be relied on for engineering, design, or surveying work or other similar type uses. The information on this map is dated and has no warranty of MERCHANTABILITY or warranty of fitness of use for a particular purpose, express or implied. This map is produced, printed, and distributed as is, with all faults.

**Closure of Tillery Street 350' NW ROW from Fountain Rd Intersection**

File No. 4-A-11-80 CLT No. 58 City Block No. 35800 Ward 36 Water Utility

128 Feet



Printed: 03/21/2011 10:38 AM