

8-A-11-SC-cor-KUB



Knoxville Utilities Board



July 12, 2011

Mr. Mike Brusseau
Knoxville-Knox County
Metropolitan Planning Commission
Suite 403, City-County Building
Knoxville, Tennessee 37902

Dear Mr. Brusseau:

Re: Right-of-Way Closure Request 8-A-11-SC
Block No. Unknown
CLT No. 81
Parcel No. 21

We have reviewed our records and find that we have existing utility facilities located within the subject right-of-way. The approximate location of these facilities is indicated on the enclosed prints. However, KUB does not release and hereby retains all easements and rights for existing utility facilities, whether or not shown on these prints.

Should this right-of-way be closed, KUB will require the following permanent easement for its utility facility.

Electric – 10 feet on each side of the centerline of the electric line, 20 feet total width
Gas – 7.5 feet on each side of the centerline of the gas line, 15 feet total width

So long as these conditions are met, KUB has no objection to the closure of this right-of-way. If you have any questions regarding this matter, please call me at (865) 558-2291.

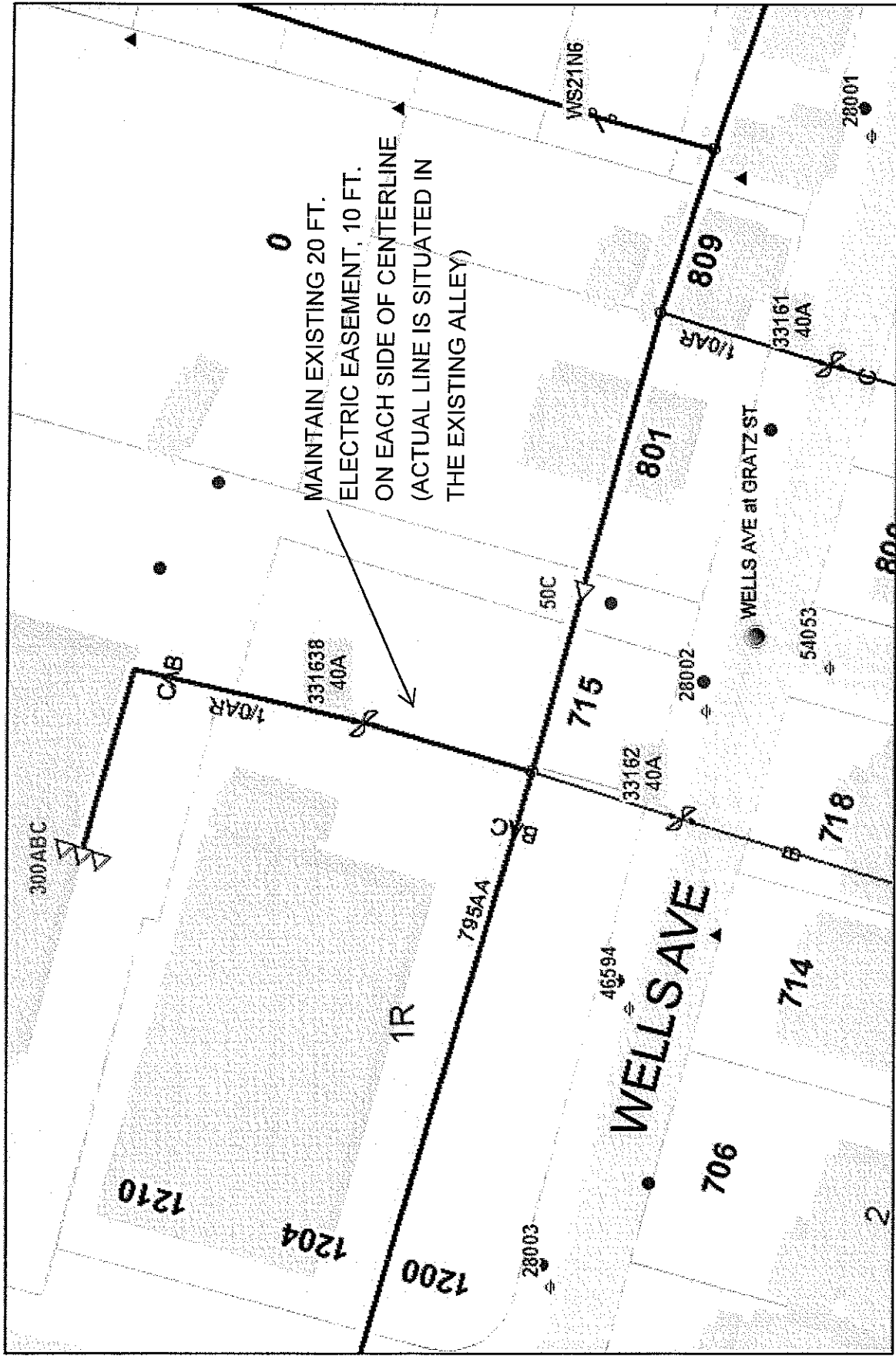
Sincerely,

A handwritten signature in black ink that reads 'Gregory Patterson'.

Greg L. Patterson, P.E.
Engineering

glp/ggt

Enclosure



Printed: 07/11/2011 16:11 PM

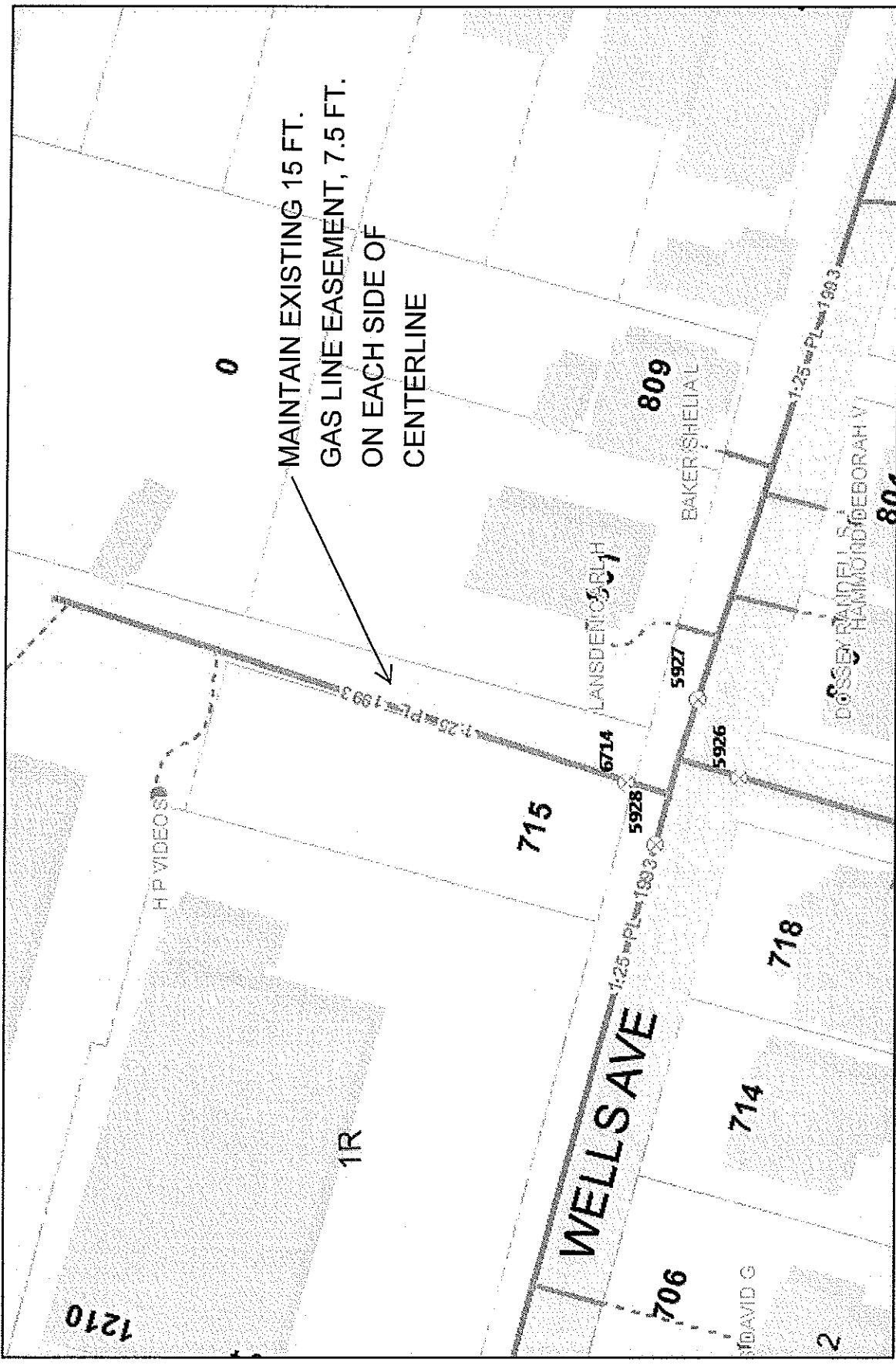
File No. 8-A-11-SC Closure of Gratz St (Lot 11 to Lot 15) Electric



CLT Map #81 Parcel #21 City Block # unknown



Knoxville Utilities Board
 product warning: This map was produced from the Landbase Information system maintained by KGIS. This map should not be relied on for engineering, design, or surveying work or other similar type uses. The information on this map is dated and has no warranty of merchantability or warranty for fitness of use for a particular purpose, express or implied. This map is produced, printed, and distributed as is, with all faults.



0
 MAINTAIN EXISTING 15 FT.
 GAS LINE EASEMENT, 7.5 FT.
 ON EACH SIDE OF
 CENTERLINE

Printed: 07/11/2011 15:01 PM



File No. 8-A-11-SC Closure of Gratz St (from Lot 11 to Lot 15) - Gas

CLT Map #81 Parcel #21 City Block # Unknown

100 Feet



Knoxville Utilities Board

Product Warning: This map was produced from the Landbase Information system maintained by KGIS. This map should not be relied on for engineering, design, or surveying work or other similar type uses. The information on this map is dated and has no warranty of merchantability or warranty for fitness for use for a particular purpose, express or implied. This map is produced, printed, and distributed as is, with all faults.