

12-C-12-SC - cor - City Eng



CITY OF KNOXVILLE

Engineering
James R. Hagerman, P.E.
Director of Engineering

November 26, 2012

Mr. Mike Brusseau, AICP, Senior Planner
Knoxville-Knox County Metropolitan Planning Commission
City-County Building, Suite 403
Knoxville, Tennessee 37902



SUBJECT: MPC File # 12-C-12-SC/ City Block 23362
Request to close a portion of Dawn Street from southeast corner of parcel 094HQ005 to Richmond Ave.

Dear Mr. Brusseau:

The City Engineering Department has no objections to close the right-of-way as described above. Should this right-of-way be closed, the City will reserve easements for all drainage facilities and utilities, if any, located in or within five (5) feet of the property described herein.

If you have any questions, please call. You can reach me at 215-4615.

Sincerely,

Benjamin D. Davidson, PLS, Technical Services Administrator



Knoxville Utilities Board



November 9, 2012

Mr. Mike Brusseau
Knoxville-Knox County
Metropolitan Planning Commission
Suite 403, City-County Building
Knoxville, Tennessee 37902

Dear Mr. Brusseau:

**Re: Right-of-Way Closure Request 12-C-12-SC
Block No. 23362
CLT No. 94
Parcel No. 5**

We have reviewed our records and find that we have existing utility facilities located within the subject right-of-way. The approximate location of these facilities is indicated on the enclosed prints. However, KUB does not release and hereby retains all easements and rights for existing utility facilities, whether or not shown on these prints.

Should this right-of-way be closed, KUB will require the following permanent easement for its utility facility.

Sewer – 7.5 feet on each side of the centerline of the wastewater line, 15 feet total width

So long as these conditions are met, KUB has no objection to the closure of this right-of-way. If you have any questions regarding this matter, please call me at (865) 558-2291.

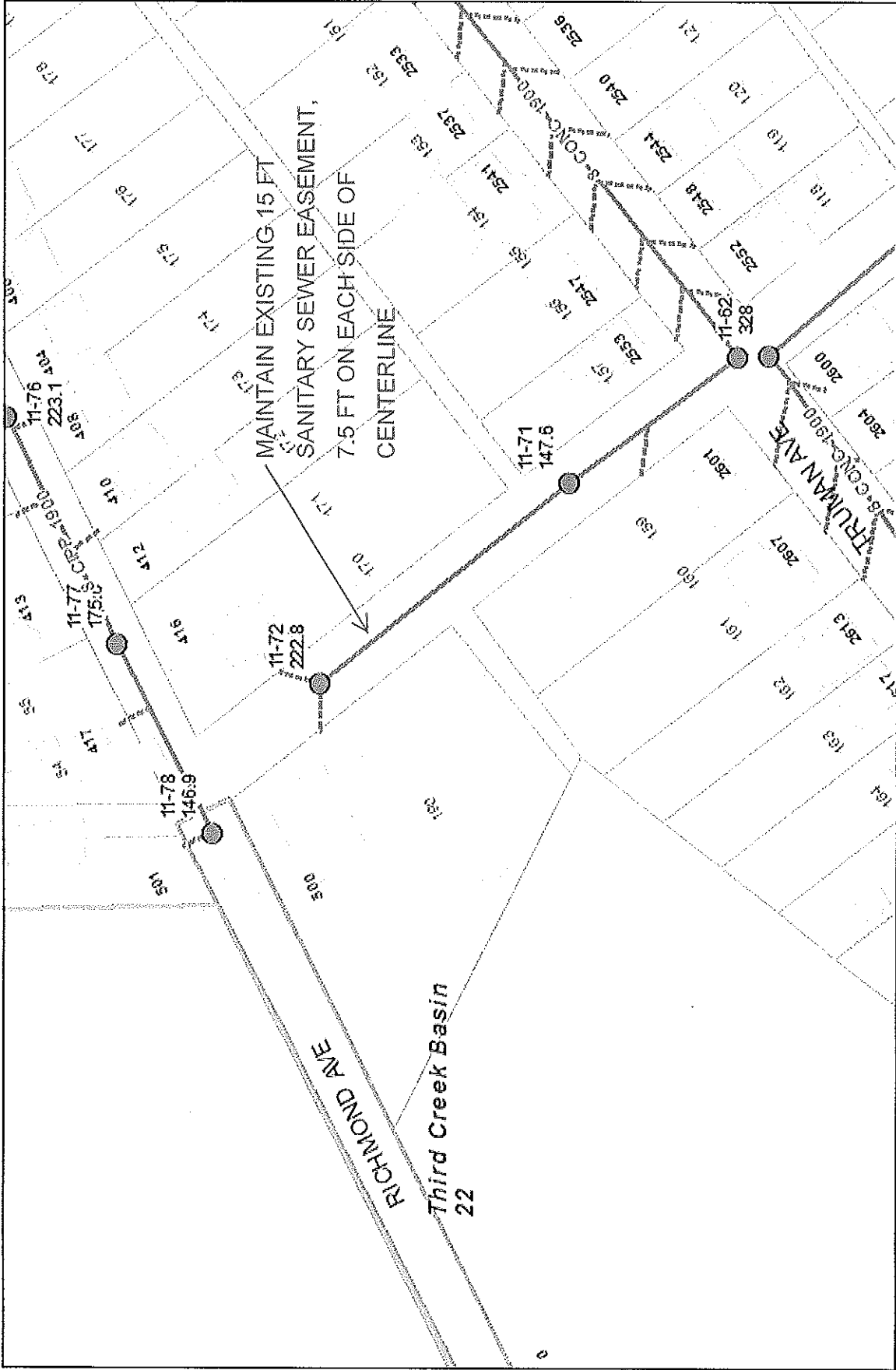
Sincerely,

A handwritten signature in cursive script that reads 'Greg L. Patterson'.

Greg L. Patterson, P.E.
Engineering

Glp/ggt

Enclosure



Printed: 11/08/2012 14:18 PM



File No. 12-C-12-SC Closure of Dawn Street Sewer

PARCEL #5 CLT MAP #94 CITY BLOCK #23362

200 Feet



Product Warning: This map was produced from the Landbase information system maintained by KGIS. This map should not be relied on for engineering, design, or surveying work or other similar type uses. The information on this map is dated and has no warranty of merchantability or warranty for fitness of use for a particular purpose, express or implied. This map is produced, printed, and distributed as is, with all faults.