

2-A-12-SC-cor-KUB



Knoxville Utilities Board



January 9, 2012

Mr. Mike Brusseau
Knoxville-Knox County
Metropolitan Planning Commission
Suite 403, City-County Building
Knoxville, Tennessee 37902

Dear Mr. Brusseau:

**Re: Right-of-Way Closure Request 2-A-12-SC
Block No. 19117
CLT No. 93
Parcel No. 12**

We have reviewed our records and find that we have existing utility facilities located within the subject right-of-way. The approximate location of these facilities is indicated on the enclosed prints. However, KUB does not release and hereby retains all easements and rights for existing utility facilities, whether or not shown on these prints.

Should this right-of-way be closed, KUB will require the following permanent easement for its utility facility.

Electric – 10 feet on each side of the centerline of the electric line, 20 feet total width
Water – 7.5 feet on each side of the centerline of the water line, 15 feet total width

So long as these conditions are met, KUB has no objection to the closure of this right-of-way. If you have any questions regarding this matter, please call me at (865) 558-2291.

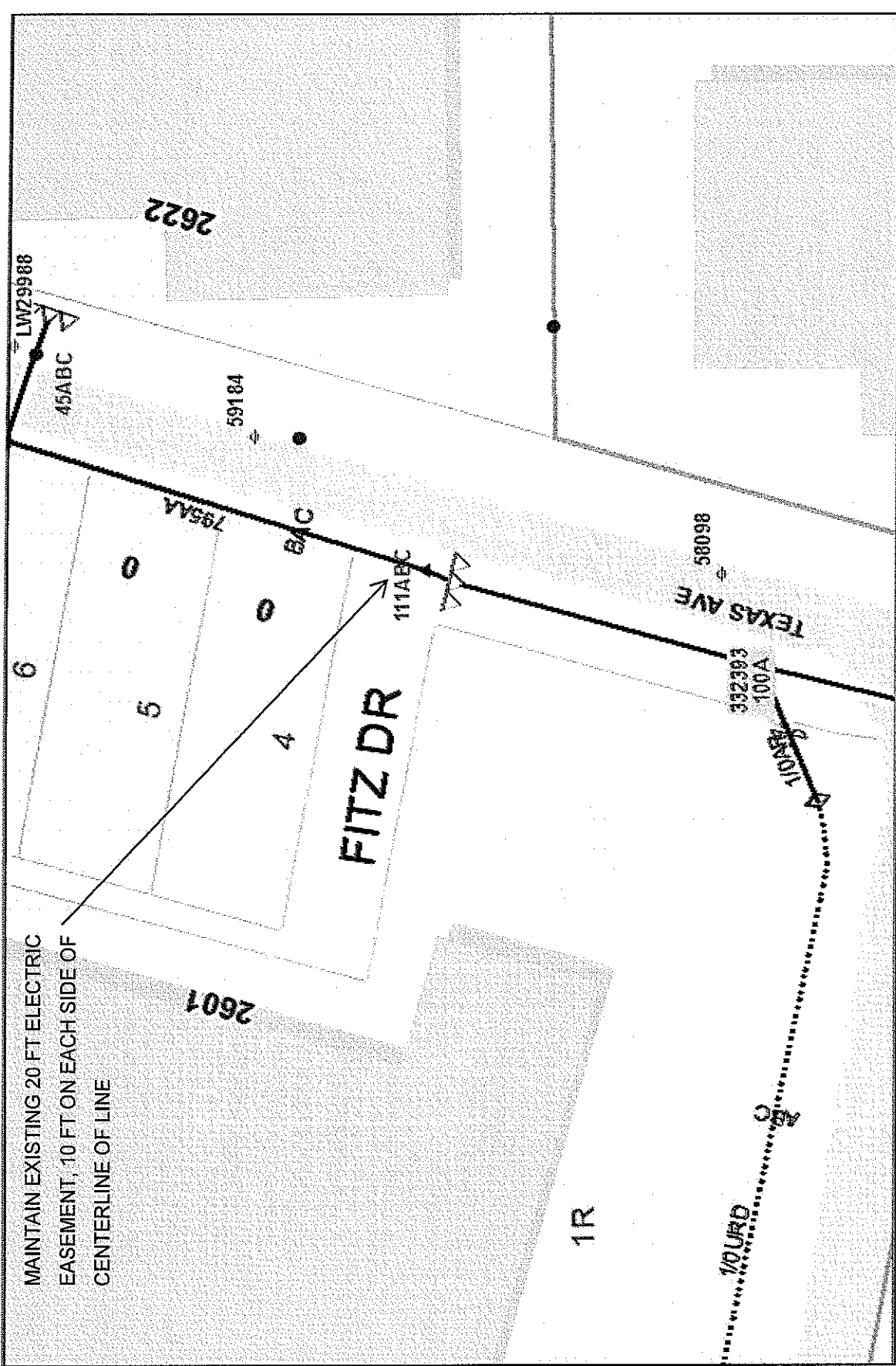
Sincerely,

A handwritten signature in cursive script that reads 'Greg Patterson'.

Greg L. Patterson, P.E.
Engineering

glp/ggt

Enclosure



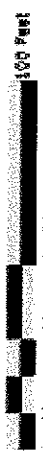
MAINTAIN EXISTING 20 FT ELECTRIC EASEMENT, 10 FT ON EACH SIDE OF CENTERLINE OF LINE



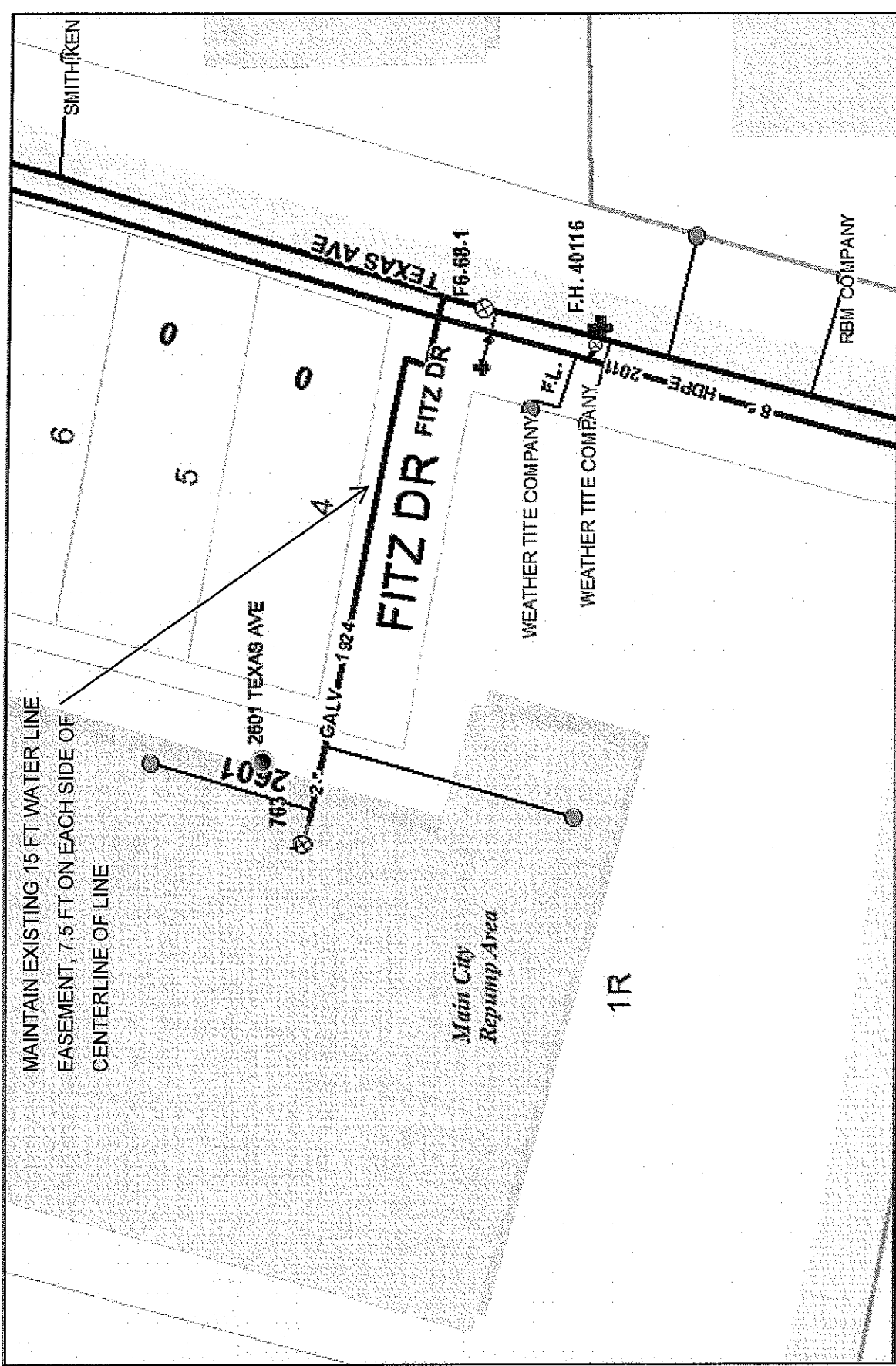
Knoxville Utilities Board
 product warning: This map was produced from the Landbase Information System maintained by KUB. This map should not be relied on for engineering, design, or surveying work or other similar type uses. The information on this map is dated and has no warranty of interchangeability or warranty for use for a particular purpose, express or implied. This map is produced, printed, and distributed as is, with all faults.

File No. 2-A-12-SC 2601 Texas Avenue Electric

CLT Map #83 Parcel #12 City Block #19117



Printed: 01/06/2013 11:23 AM



KUB
 Knowlton Utilities Group
 product warning: This map was produced from the Landbase information system maintained by KUB. This map should not be relied on for engineering, design, or surveying work or other similar type uses. The information on this map is dated and has no warranty of merchantability or warranty for fitness of use for a particular purpose, express or implied. This map is produced, printed, and distributed as is, with all faults.

File No. 2-A-12-SC 2601 Texas Avenue Water

CLT Map # 83 Parcel #12 City Block #18117

Scale: 1" = 500 Feet

Printed: 01/09/2012 11:31 AM

North Arrow