

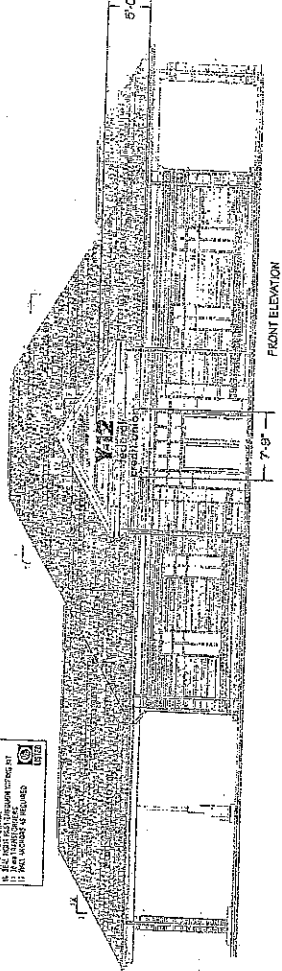
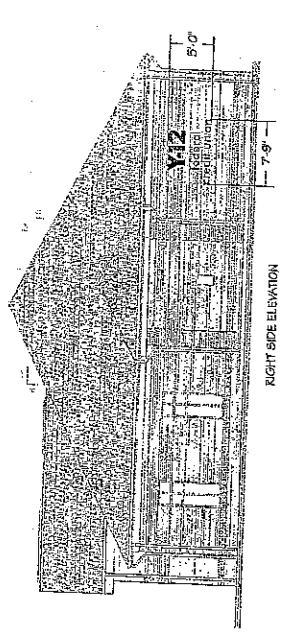
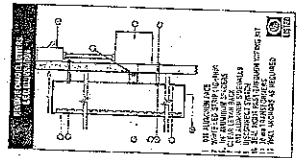
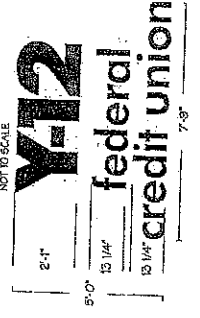
SIGNCO Inc.
 PLASTIC, PAPER, CLEARTYPE

SIGN & FAX BACK SO THAT WE MAY APPROVE YOUR ORDER. FAX: 865.947.2085

Customer	Phil Baird	APPROVAL SIGNATURE
Location	Y12 Bldgs	DATE: 11/17/11
Project Code	0000	SCALE: 3/32" = 1"
Drawn By	JMR	Checked By
Project Name	Y12 Bldgs	Project Manager
Project Code	0000	Project Manager
Project Code	0000	Project Manager
Project Code	0000	Project Manager
Project Code	0000	Project Manager
Project Code	0000	Project Manager

VALUE OF THIS DRAWING: \$500.00

37' x 25' 78'



SIGNAGE CALCULATIONS PER SIGNCO INCORPORATED

PARASOLS AND INSTALLATION INSTRUCTIONS FOR PARASOLS AND INSTALLATION CHANNELS. LETTERS READERS IN THESE DIMENSIONS. THE PARASOLS AND INSTALLATION CHANNELS. LETTERS WILL BE USED UP AND APPLIED TO THE CHANNELS. THE CHANNELS WILL BE USED UP AND APPLIED TO THE CHANNELS. THE CHANNELS WILL BE USED UP AND APPLIED TO THE CHANNELS.

PARASOLS AND INSTALLATION INSTRUCTIONS FOR PARASOLS AND INSTALLATION CHANNELS. LETTERS READERS IN THESE DIMENSIONS. THE PARASOLS AND INSTALLATION CHANNELS. LETTERS WILL BE USED UP AND APPLIED TO THE CHANNELS. THE CHANNELS WILL BE USED UP AND APPLIED TO THE CHANNELS. THE CHANNELS WILL BE USED UP AND APPLIED TO THE CHANNELS.

PARASOLS AND INSTALLATION INSTRUCTIONS FOR PARASOLS AND INSTALLATION CHANNELS. LETTERS READERS IN THESE DIMENSIONS. THE PARASOLS AND INSTALLATION CHANNELS. LETTERS WILL BE USED UP AND APPLIED TO THE CHANNELS. THE CHANNELS WILL BE USED UP AND APPLIED TO THE CHANNELS. THE CHANNELS WILL BE USED UP AND APPLIED TO THE CHANNELS.

I-A-12-UR



Randolph
Architects

9724 Kingston Pike
Suite 305 B
Knoxville, TN 37922
V: 865.327.3740
F: 865.327.3746

NOT FOR
CONSTRUCTION

MPC
SUBMISSION
SET

2011_24

Y-12 FEDERAL CREDIT UNION
KINGSTON PIKE
KNOXVILLE, TENNESSEE 37922

Address to:

Issue Date: 06-03-2011

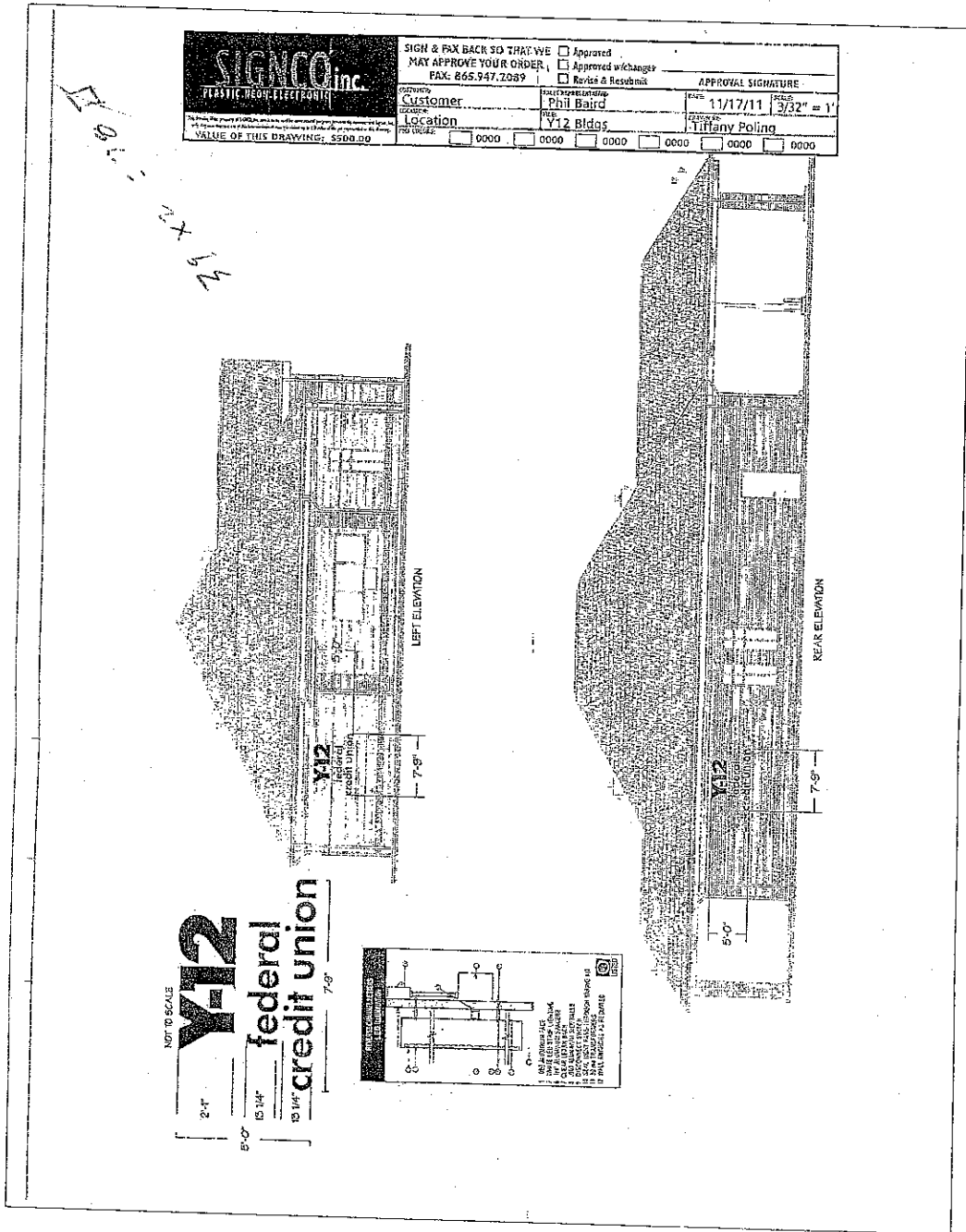
Design: JUR

Checked: RMR

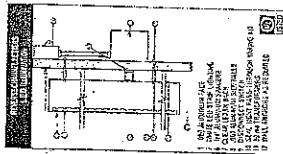
Revised:

\$1.02

1/11/11



NOT TO SCALE
Y12
federal
credit union
7'-8"
5'-0"
7'-8"



SIGNAGE CALCULATIONS PER SIGNCO INCORPORATED

FABRICATE AND INSTALL ONE (1) SIGN ON A 50' HIGH WIND EXPOSED AREA. SIGNAGE SHALL BE FABRICATED AND INSTALLED BY THE CONTRACTOR TO MEET THE FOLLOWING REQUIREMENTS:
1. SIGNAGE SHALL BE FABRICATED AND INSTALLED BY THE CONTRACTOR TO MEET THE FOLLOWING REQUIREMENTS:
2. SIGNAGE SHALL BE FABRICATED AND INSTALLED BY THE CONTRACTOR TO MEET THE FOLLOWING REQUIREMENTS:
3. SIGNAGE SHALL BE FABRICATED AND INSTALLED BY THE CONTRACTOR TO MEET THE FOLLOWING REQUIREMENTS:

FABRICATE AND INSTALL FOUR (4) SIGNAGE OF 50" X 20" REVERSE CHANNEL.
SIGNAGE SHALL BE FABRICATED AND INSTALLED BY THE CONTRACTOR TO MEET THE FOLLOWING REQUIREMENTS:
CHANNEL LETTERS WILL BE LED UP AND PAINTED TO MATCH PANEL REVERSE CHANNEL.
FABRICATE AND INSTALL SIGN ON TOP OF INTERNAL FLANGE WITH REVERSE CHANNEL.
SIGNAGE SHALL BE FABRICATED AND INSTALLED BY THE CONTRACTOR TO MEET THE FOLLOWING REQUIREMENTS:

11420200
824 863300
824 465200


randolph
architecture
 9724 Kingston Pike
 Suite 305 B
 Knoxville, TN 37932
 Tel: 615.357.3750
 Fax: 615.357.3746

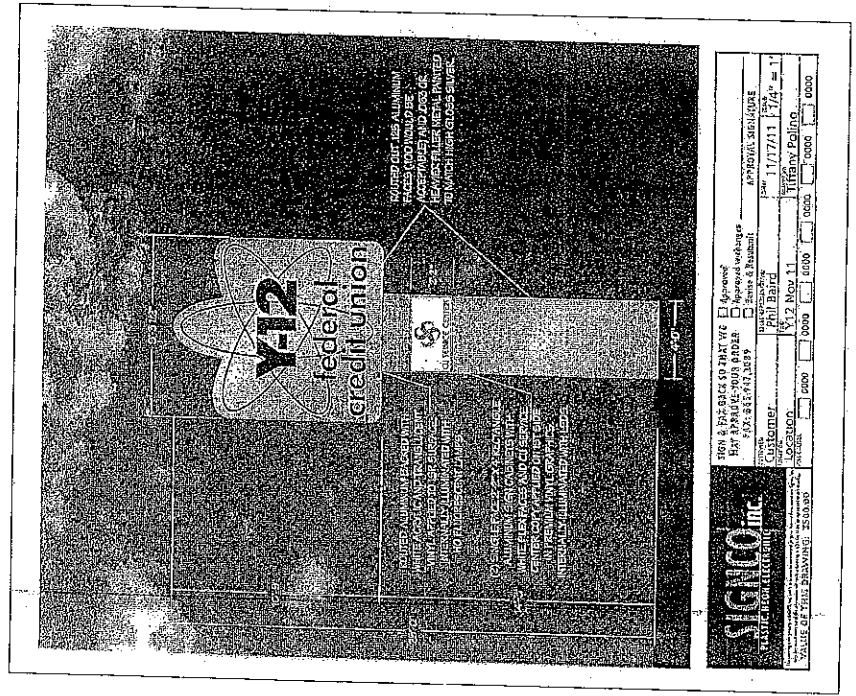
NOT FOR
 CONSTRUCTION
 MPC
 SUBMISSION
 SET
 2011_24

Y-12 FEDERAL CREDIT UNION
 KINGSTON PIKE
 KNOXVILLE TENNESSEE 37922

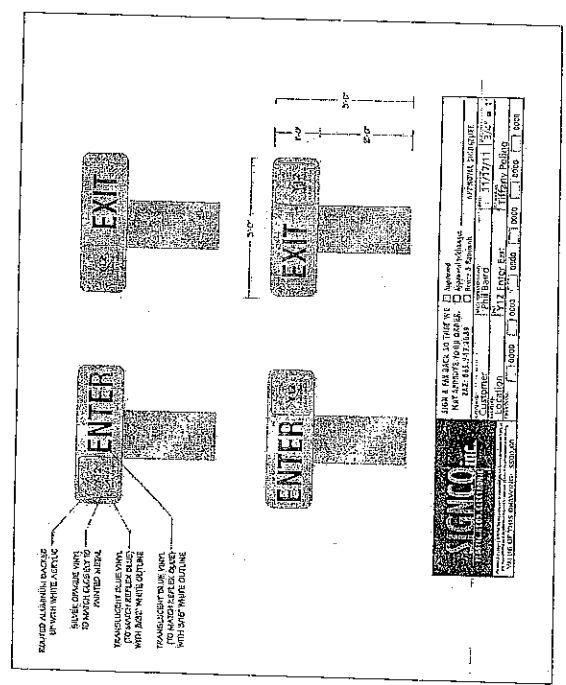
Issue Date: 10-26-2011
 Drawn: []
 JMR: []
 RMR: []
 Revision: []

\$2.01
 Figure

100
 8
 1
 13



GROUND MOUNTED SIGNAGE
 SCALE: N.T.S.



GROUND MOUNTED SIGNAGE
 SCALE: N.T.S.