



## CITY OF KNOXVILLE

---

Engineering  
James R. Hagerman, P.E.  
Director of Engineering

August 9, 2012

Mr. Mike Brusseau, Principal Planner  
Metropolitan Planning Commission  
Suite 403, City County Building  
Knoxville, Tennessee 37901

SUBJECT: Request to Close Brookside Ct  
MPC File # 9-B-12-SC / City Block 20380

Mr. Brusseau:

The City Engineering Department has no objections to close the specified public right-of-way. Should this right-of-way be closed, the City will reserve easements for all drainage facilities and utilities, if any, located in or within five (5) feet of the property described herein.

If you have any questions, please call. You can reach me at 215-4615.

Sincerely,

Benjamin D. Davidson, PLS, Technical Services Administrator

C: James R. Hagerman, P.E., Director of Engineering  
Brently J. Johnson, P.E., R.L.S., Engineering Planning Chief



Knoxville Utilities Board



August 13, 2012

Mr. Mike Brusseau  
Knoxville-Knox County  
Metropolitan Planning Commission  
Suite 403, City-County Building  
Knoxville, Tennessee 37902

Dear Mr. Brusseau:

**Re: Right-of-Way Closure Request 9-B-12-SC  
Block No. 20380  
CLT No. 81  
Parcel No. 26**

We have reviewed our records and find that we have existing utility facilities located within the subject right-of-way. The approximate location of these facilities is indicated on the enclosed prints. However, KUB does not release and hereby retains all easements and rights for existing utility facilities, whether or not shown on these prints.

Should this right-of-way be closed, KUB will require the following permanent easement for its utility facility.

Electric – 10 feet on each side of the centerline of the electric line, 20 feet total width  
Sewer – 7.5 feet on each side of the centerline of the wastewater line, 15 feet total width

So long as these conditions are met, KUB has no objection to the closure of this right-of-way. If you have any questions regarding this matter, please call me at (865) 558-2291.

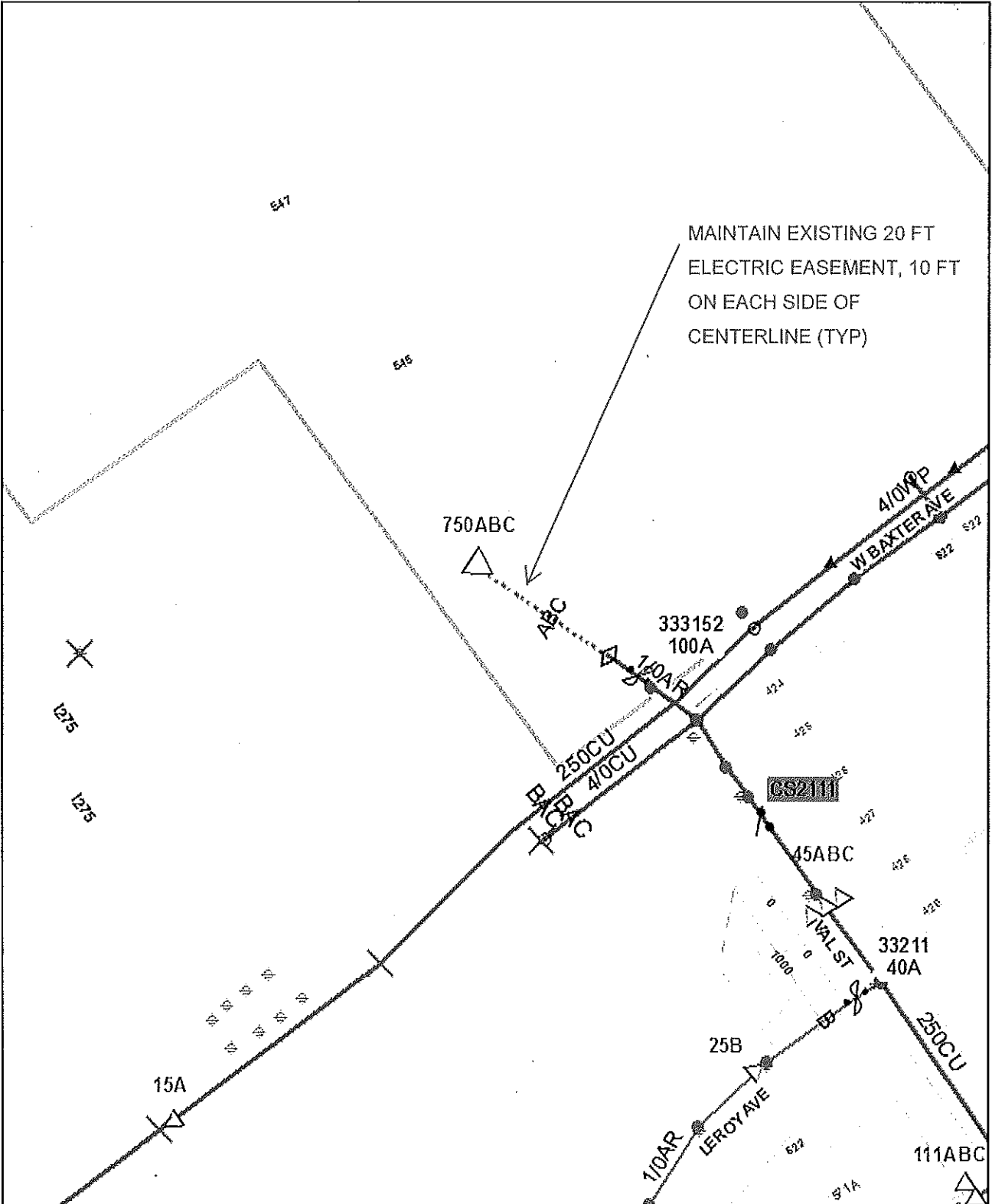
Sincerely,

A handwritten signature in cursive script that reads 'Greg L. Patterson'.

Greg L. Patterson, P.E.  
Engineering

gjp/ggt

Enclosure



MAINTAIN EXISTING 20 FT  
ELECTRIC EASEMENT, 10 FT  
ON EACH SIDE OF  
CENTERLINE (TYP)



Knoxville Utilities Board

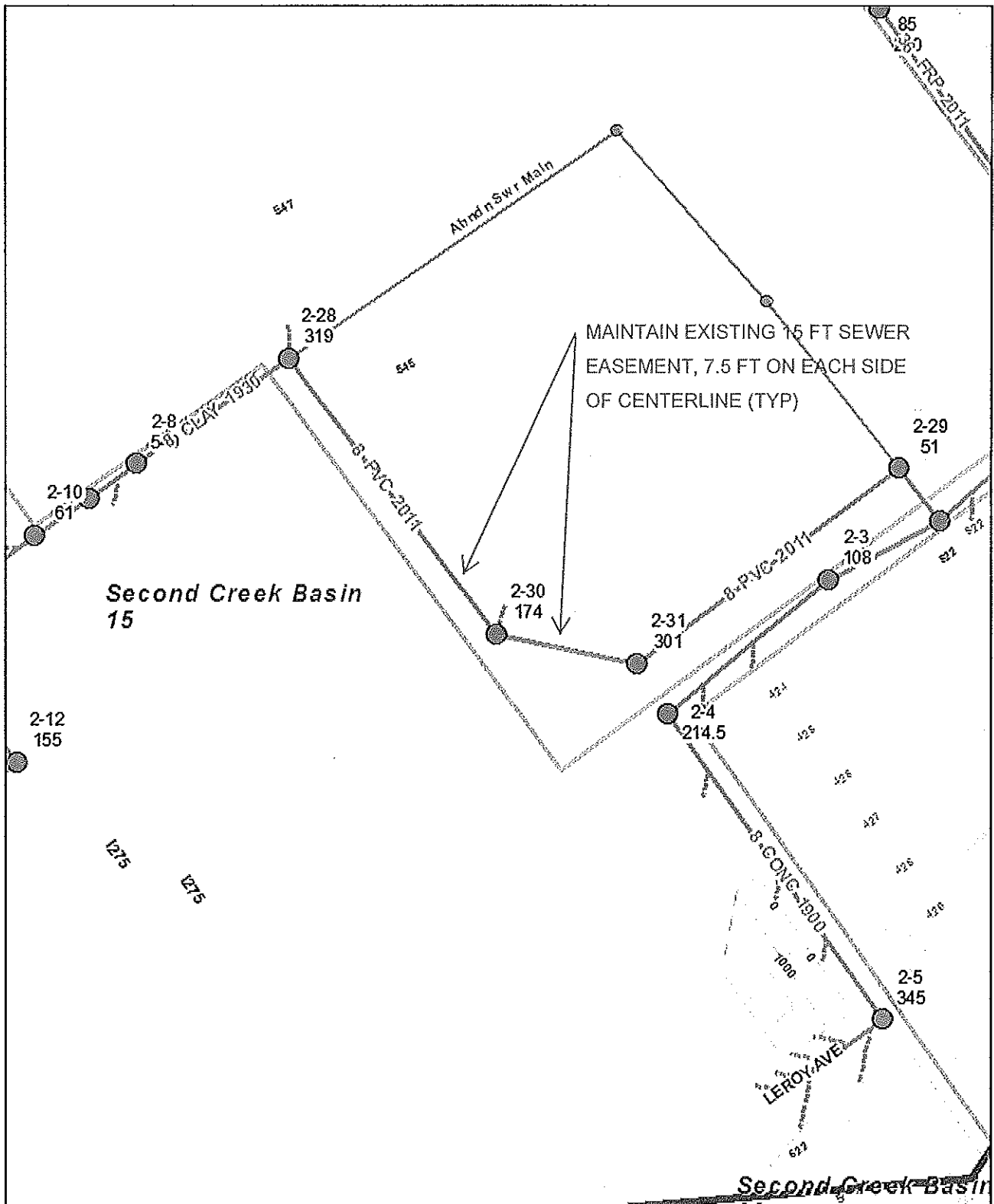
**Closure of Brookside Ct. File No. 9-B-12-SC Electric**

led: 03/13/2012 10:14 AM

Parcel #26      CLT Map #81      City Block #20380



Product Warning: This map was produced from the Landbase information system maintained by KGIS. This map should not be relied on for engineering, design, or surveying work or other similar type uses. The information on this map is dated and has no warranty of merchantability or warranty for fitness of use for a particular purpose, express or implied. This map is produced, printed, and distributed as is, with all faults.



MAINTAIN EXISTING 15 FT SEWER EASEMENT, 7.5 FT ON EACH SIDE OF CENTERLINE (TYP)



**Closure of Brookside Ct. File No. 9-B-12-SC Sewer**

ted: 03/13/2012 10:14 AM

Parcel #26 CLT Map #81 City Block #20380



Product Warning: This map was produced from the Landbase information system maintained by KGIS. This map should not be relied on for engineering, design, or surveying work or other similar type uses. The information on this map is dated and has no warranty of merchantability or warranty for fitness of use for a particular purpose, express or implied. This map is produced, printed, and distributed as is, with all faults.