



CITY OF KNOXVILLE

Engineering
James R. Hagerman, P.E.
Director of Engineering

July 22, 2013

Mr. Mike Brusseau, AICP, Senior Planner
Knoxville-Knox County Metropolitan Planning Commission
City-County Building, Suite 403
Knoxville, Tennessee 37902

SUBJECT: MPC File # 8-B-13-SC, closure of Lake Loudon Blvd between Volunteer Blvd & Neyland Dr
City Blocks 10800 & 10820

Mr. Brusseau:

The City Engineering Department has no objections to close the above described right-of-way area provided the following conditions, subject to City Engineering approval, are met:

1. Should this right-of-way be closed, the applicant assumes maintenance responsibility for all stormwater systems previously maintained by the City, within the closure area. The applicant will maintain the approved stormwater facilities in good working order acceptable to the City Department of Engineering. Minimum maintenance of the said facilities shall include sediment, debris, oil, hydrocarbons, and foreign materials removal so that the operation and capacity of the stormwater facilities continue to meet acceptable standards.
2. If the applicant subsequently conveys property abutting any closed areas, the applicant shall provide legal access to a public street for ingress/egress, utilities, etc. necessary to support conveyed property.
3. The University of Tennessee shall dedicate easements for all control devices located within the closure area of Johnny Majors Dr at the intersections of Lake Loudon Blvd & Volunteer Blvd and at the intersection of Lake Loudon Blvd and Neyland Dr. Easements will not be required for traffic control devices at the intersection of Johnny Majors Dr, Phillip Fulmer Way, and Chamique Holdsclaw Dr.
4. The easements stated in item no. 3 shall be abandoned and extinguished if the intersecting open public right-of-ways areas, on which the traffic control devices are located, are ever closed.
5. All conditions must be met within one (1) year upon the final approval by City Council. Otherwise, this process will be deemed to be null and void and of no effect.
6. The closing ordinance shall state that the closure shall become effective only after the Department of Engineering has provided written verification to the City Recorder that all conditions have been met.

Sincerely,

Benjamin D. Davidson

Benjamin D. Davidson, PLS, Technical Services Administrator, Department of Engineering
Ph: 865-215-2148

C: Brently J. Johnson, P.E., R.L.S., Engineering Planning Chief
Christopher S. Howley, P.E., Plans Review and Development Inspections



Knoxville Utilities Board

8-B-13-SC cor KUB



July 9, 2013

Mr. Mike Brusseau
Knoxville-Knox County
Metropolitan Planning Commission
Suite 403, City-County Building
Knoxville, Tennessee 37902

Dear Mr. Brusseau:

**Re: Right-of-Way Closure Request 8-B-13-SC
Block No. 10800 & 10820
CLT No. 108
Parcel No. 7**

We have reviewed our records and find that we have existing utility facilities located within the subject right-of-way. The approximate location of these facilities is indicated on the enclosed prints. However, KUB does not release and hereby retains all easements and rights for existing utility facilities, whether or not shown on these prints.

Should this right-of-way be closed, KUB will require the following permanent easement for its utility facility.

Gas – 12.5 feet on each side of the centerline of the gas line, 25 feet total width
Sewer – 7.5 feet on each side of the centerline of the wastewater line, 15 feet total width
Sewer – 12.5 feet on each side of the centerline of the wastewater line, 25 feet total width
Water - 12.5 feet on each side of the centerline of the water line, 25 feet total width

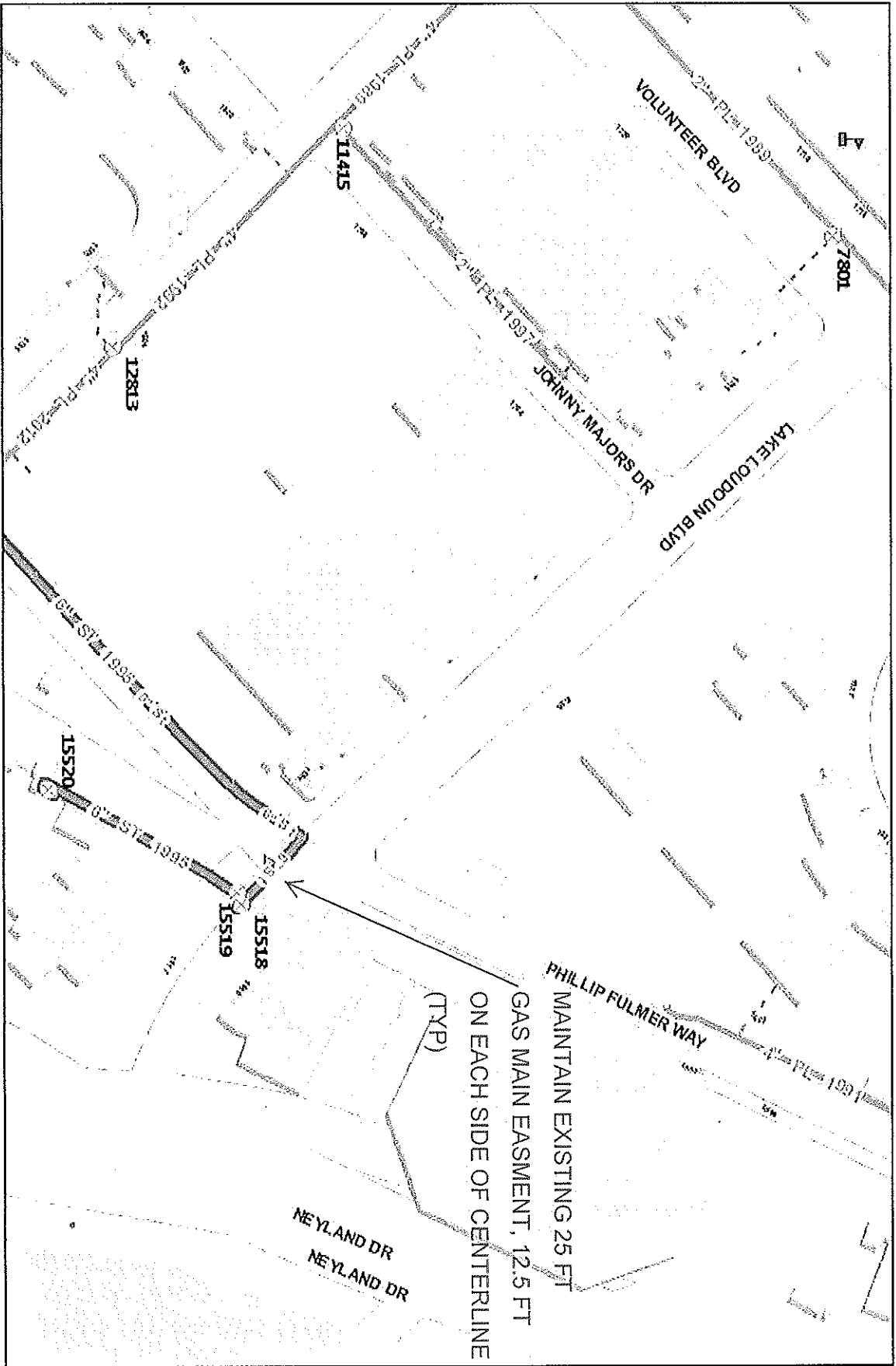
So long as these conditions are met, KUB has no objection to the closure of this right-of-way. If you have any questions regarding this matter, please call me at (865) 558-2291.

Sincerely,

Greg L. Patterson, P.E.
Engineering

glp/ggt

Enclosure



MAINTAIN EXISTING 25 FT
 GAS MAIN EASMENT, 12.5 FT
 ON EACH SIDE OF CENTERLINE
 (TYP)

File No. 8-B-13-SC CLOSURE OF LAKE LOUDDOWN BLVD (Gas)

Volunteer Blvd to Neyland Drive CLT Map #108 Parcel #7 City Block(s) 10800 & 10820



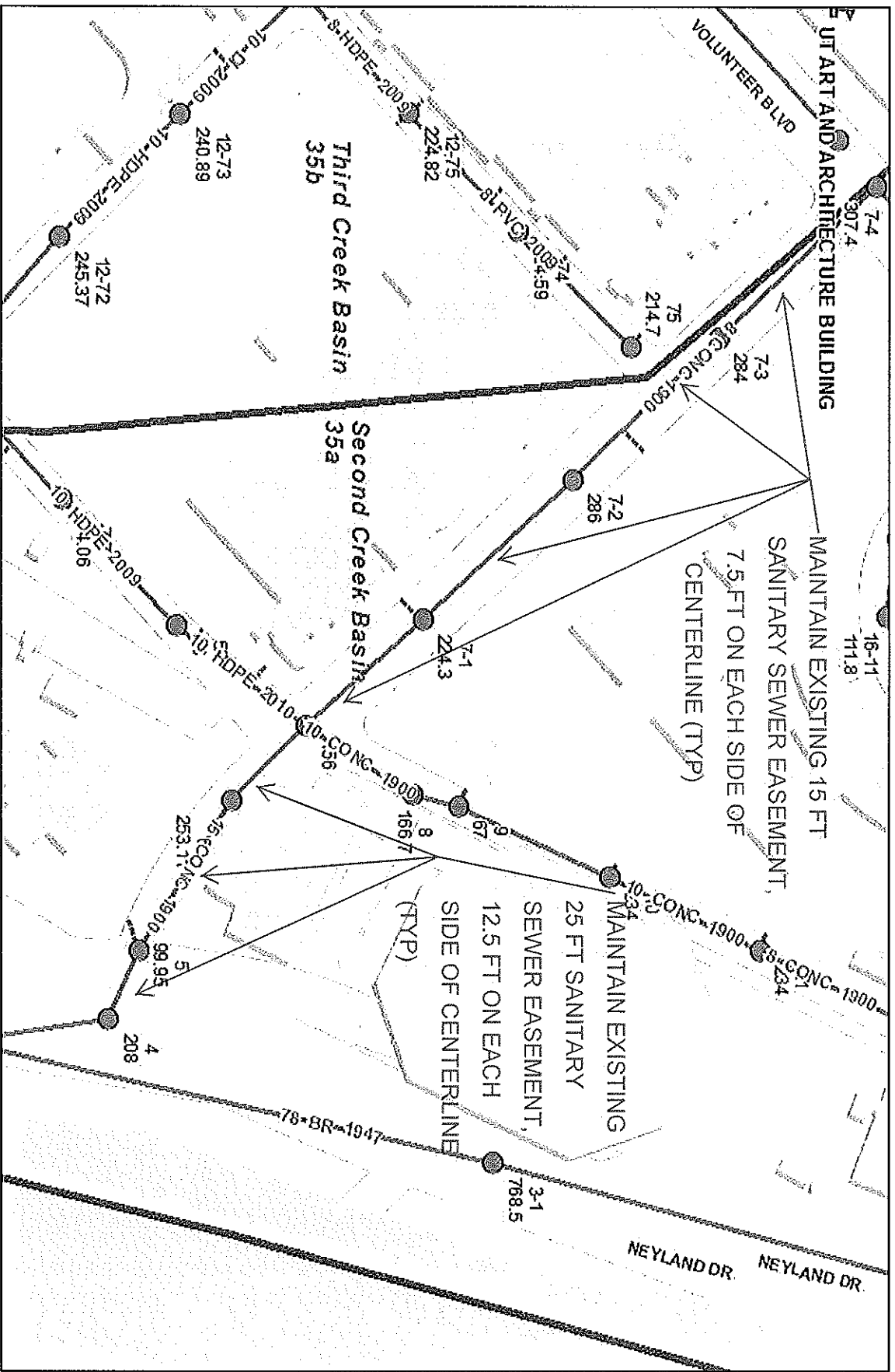
Known as Utilities Board

Product Warning: This map was produced from the Landbase information system maintained by KGIS. This map should not be relied on for engineering, design, or surveying work or other similar type uses. The information on this map is dated and has no warranty of merchantability or warranty for fitness of use for a particular purpose, express or implied. This map is produced, printed, and distributed as is, with all faults.

400 Feet



Printed: 07/08/2013 15:07 PM



Knowlton Utilities Board

File No. 8-B-13-SC CLOSURE OF LAKE LOUDOUN BLVD (Sewer)

Volunteer Blvd to Neyland Drive CLT Map #108 Parcel #7 City Block(s) 10800 & 10820

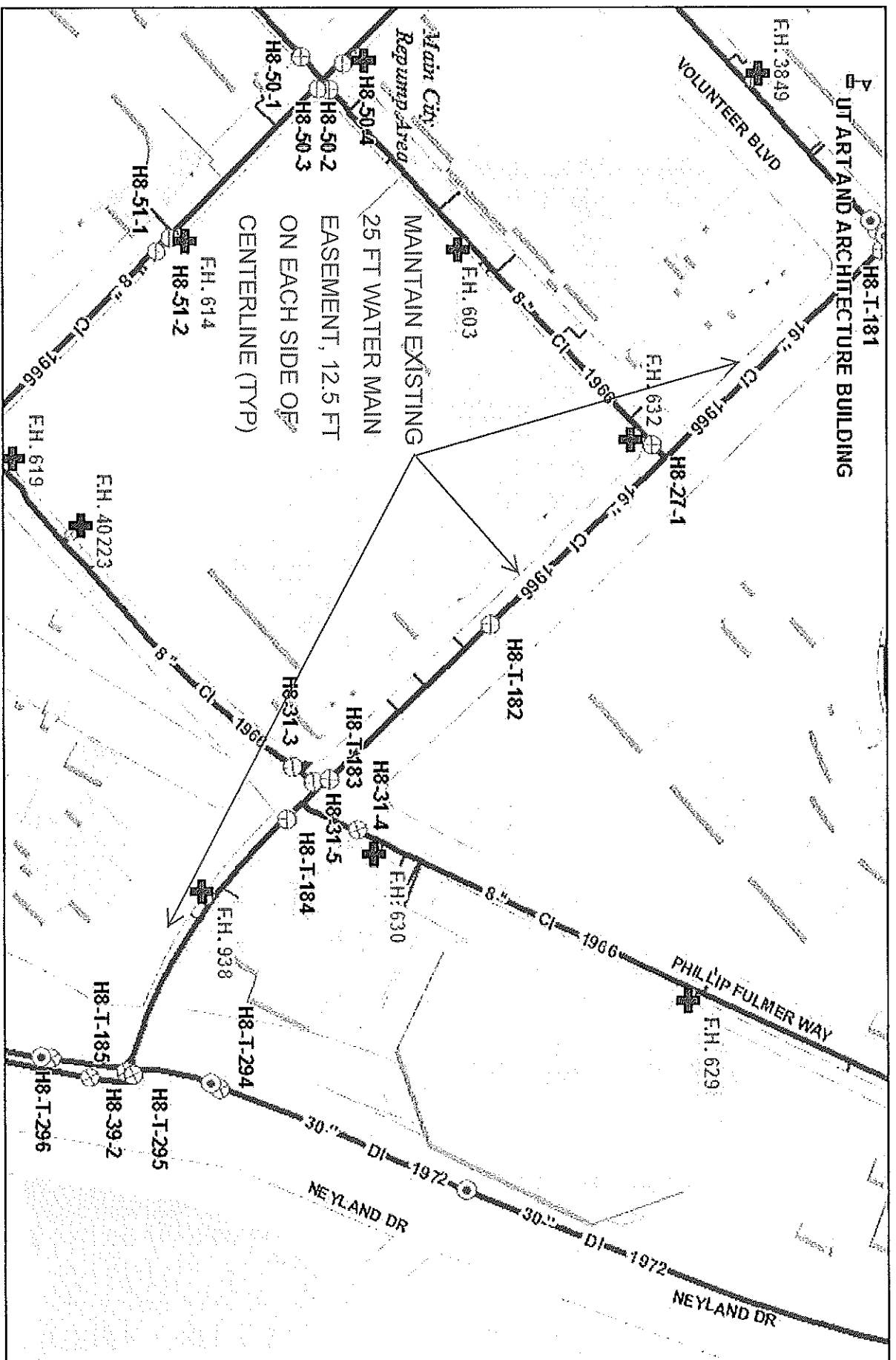


400 Feet

Planned: 07/08/2013 15:07 PM



Product Warning: This map was produced from the Landbase Information system maintained by KUB. This map should not be relied on for engineering, design, or surveying work or other similar type uses. The information on this map is dated and has no warranty of merchantability or warranty for fitness of use for a particular purpose, express or implied. This map is produced, printed, and distributed as is, with all faults.



File No. 8-B-13-SC CLOSURE OF LAKE LOUDOUN BLVD (Water)

Volunteer Blvd to Neyland Drive CLT Map #103 Parcel #7 City Block(s) 10800 & 10820



Knowne Utilities Board

Product Warning: This map was produced from the Landbase information system maintained by KGIS. This map should not be relied on for engineering, design, or surveying work or other similar type uses. The information on this map is dated and has no warranty of merchantability or warranty for fitness of use for a particular purpose, express or implied. This map is provided, printed, and distributed as is, with all faults.



400 Feet

Printed: 07/08/2013 15:07 PM

