

9-A-13-SC-cor-cityeng

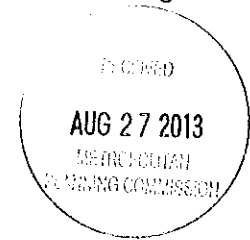


CITY OF KNOXVILLE

Engineering
James R. Hagerman, P.E.
Director of Engineering

August 15, 2013

Mr. Mike Brusseau, AICP, Senior Planner
Knoxville-Knox County Metropolitan Planning Commission
City-County Building, Suite 403
Knoxville, Tennessee 37902



SUBJECT: Curie Place Closure from Wilson Avenue to Selma Ave (City Block 14681)
MPC File # 9-A-13-SC

Mr. Brusseau:

The City Engineering Department has no objections to close the above described right-of-way area.

Sincerely,

Benjamin D. Davidson

Benjamin D. Davidson, PLS, Technical Services Administrator, Department of Engineering
Ph: 865-215-2148

C: Brently J. Johnson, P.E., R.L.S., Engineering Planning Chief
Christopher S. Howley, P.E., Plans Review and Development Inspections



Fire Prevention Bureau

City of Knoxville
400 Main Street, Suite 539
Knoxville, TN 37902

9-A-13-SC-COR-
Fire Dept.

Memorandum

Date: August 12, 2013
To: Mike Brusseau
From: Sonny Partin, Deputy Fire Marshal
Subject: Request for Information on Right of Way Closures, Fire Department Review

Road Name	Review Status	Comments
1. Knott Ave.	Approved	None
2. Curie Place	Approved	None
3. Eighteenth Street	Approved	None



Knoxville Utilities Board

August 7, 2013



Mr. Mike Brusseau
Knoxville-Knox County
Metropolitan Planning Commission
Suite 403, City-County Building
Knoxville, Tennessee 37902

Dear Mr. Brusseau:

**Re: Right-of-Way Closure Request 9-A-13-SC
Block No. N/A
CLT No. 82
Parcel No. 25.01**

We have reviewed our records and find that we have existing utility facilities located within the subject right-of-way. The approximate location of these facilities is indicated on the enclosed prints. However, KUB does not release and hereby retains all easements and rights for existing utility facilities, whether or not shown on these prints.

Should this right-of-way be closed, KUB will require the following permanent easement for its utility facility.

Gas – 7.5 feet on each side of the centerline of the gas line, 15 feet total width
Water – 7.5 feet on each side of the centerline of the water line, 15 feet total width

So long as these conditions are met, KUB has no objection to the closure of this right-of-way. If you have any questions regarding this matter, please call me at (865) 558-2291.

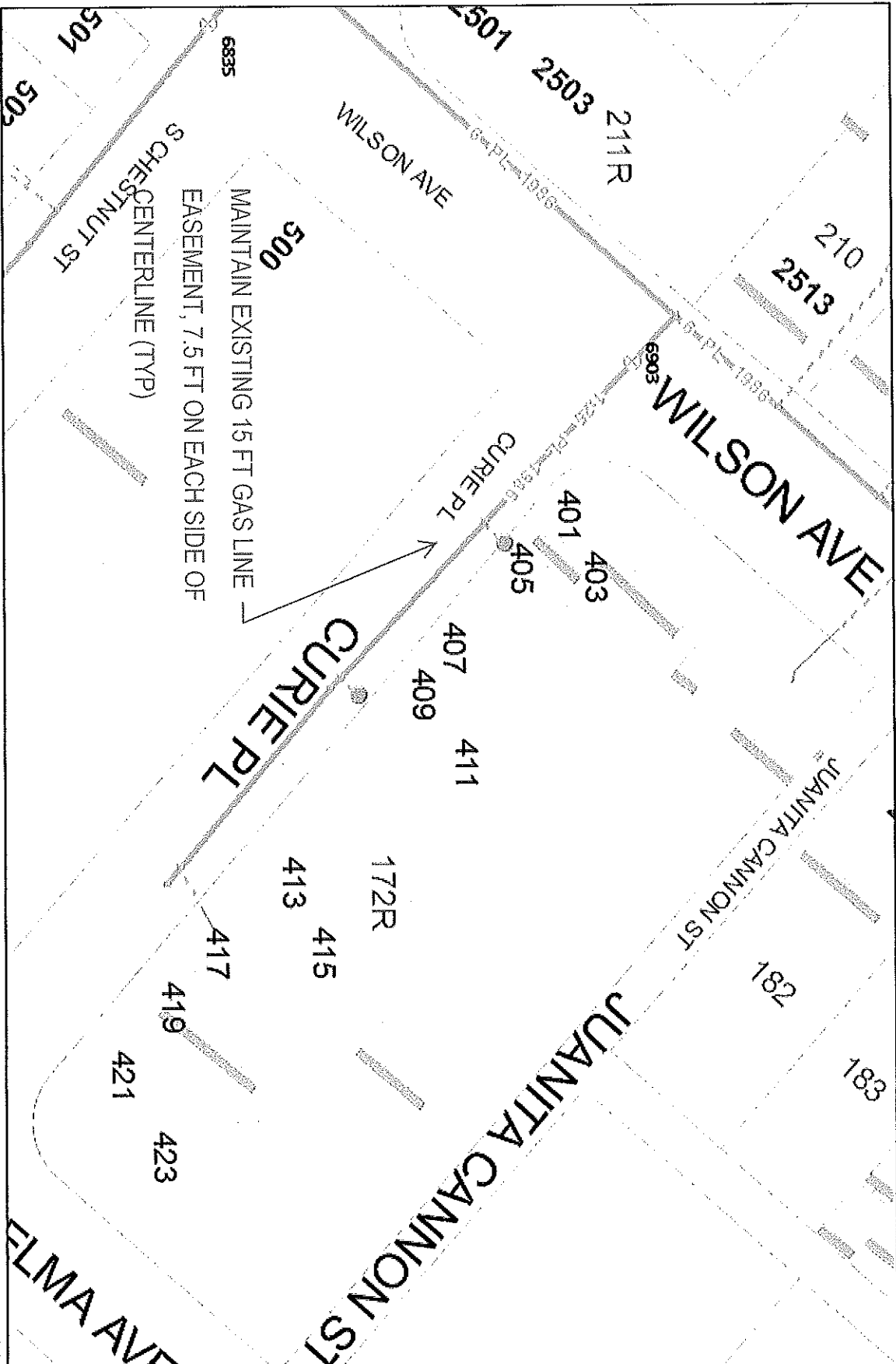
Sincerely,

A handwritten signature in cursive script that reads 'Greg L. Patterson'.

Greg L. Patterson, P.E.
Engineering

GLP/ggt

Enclosure



File No. 9-A-13-SC

Curie Place

(Gas)

CLT MAP #82

PARCEL #25.01

CITY BLOCK #N/A



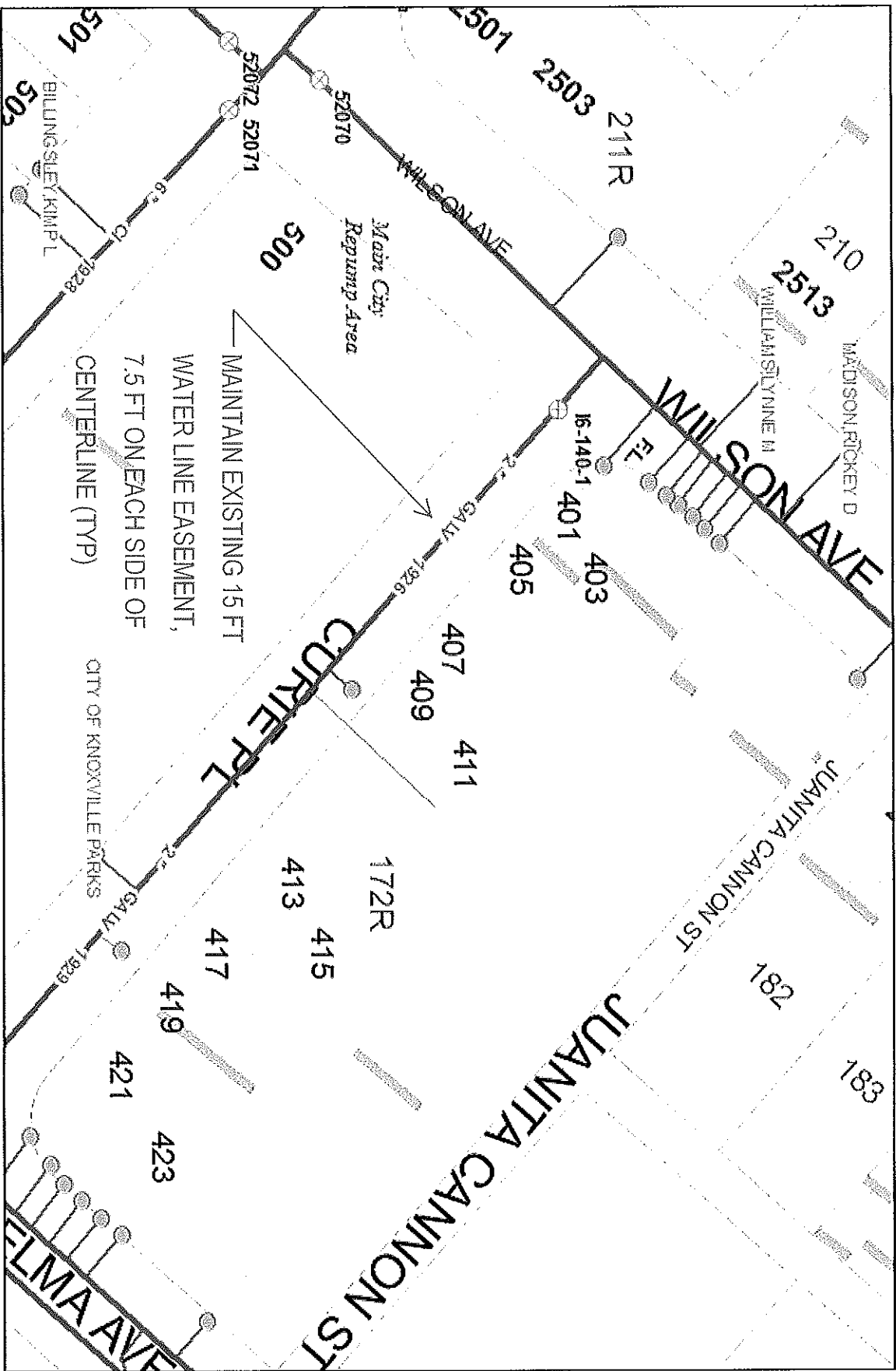
Knoxville Utilities Board

100 Feet



Printed: 03/06/2012 10:07 AM

Product Warning: This map was produced from the Landbase information system maintained by KUB. This map should not be relied on for engineering, design, or surveying work or other similar type uses. The information on this map is dated and has no warranty of merchantability or warranty for fitness of use for a particular purpose, express or implied. This map is produced, printed, and distributed as is, with all faults.



File No. 9-A-13-SC

Curie Place

(Water)

CLT MAP #82

PARCEL #25.01

CITY BLOCK #N/A



Printed: 02/10/2013 10:37 AM

Known: Utilities Board
 Product Warning: This map was produced from the landcase information system maintained by KGIS. This map should not be relied on for engineering, design, or surveying work or other similar uses. The information on this map is saved and has no warranty of merchantability or warranty for fitness of use for a particular purpose, express or implied. This map is produced, printed, and distributed as is, with all faults.