

2-B-14-AC-cor-City Eng



CITY OF KNOXVILLE

Engineering
James R. Hagerman, P.E.
Director of Engineering

February 3, 2014

Mr. Mike Brusseau, AICP, Senior Planner
Knoxville-Knox County Metropolitan Planning Commission
City-County Building, Suite 403
Knoxville, Tennessee 37902

SUBJECT: Closure of a portion of an unnamed alley off May St (closed)
MPC File # 2-B-14-AC; City Block 19100

Mr. Brusseau:

The City Engineering Department has no objections to close the above reference right-of-way area.

However, should this right-of-way be closed, the City will reserve easements for all drainage facilities and utilities, if any, located in or within five (5) feet of the property described herein.

Sincerely,

A handwritten signature in cursive script that reads "Benjamin D. Davidson".

Benjamin D. Davidson, PLS, Technical Services Administrator, Department of Engineering
Ph: 865-215-2148

C: Brentley J. Johnson, P.E., R.L.S., Engineering Planning Chief
Christopher S. Howley, P.E., Plans Review and Development Inspections

2-B-14-AC -cor-City Fire

2-B-14-AC



Fire Prevention Bureau

City of Knoxville
400 Main Street, Suite 539
Knoxville, TN 37902

Memorandum

Date: January 27, 2014
To: Mike Brusseau
From: Sonny Partin, Deputy Fire Marshal
Subject: Request for Information on Right of Way Closures, Fire Department Review

Road Name	Review Status	Comments
1. Alley @ Phillips Ave. 2A14AC	Approved	None
2. Unnamed St @ Post Oak Ln. 2A14SC	Approved	None
3. Unnamed alley @ May St. 2B14AC	Approved	None



Knoxville Utilities Board

2-B-14-AC cor KUB



January 17, 2014

Mr. Mike Brusseau
Knoxville-Knox County
Metropolitan Planning Commission
Suite 403, City-County Building
Knoxville, Tennessee 37902

Dear Mr. Brusseau:

**Re: Right-of-Way Closure Request 2-B-14-AC
Block No. 43800
CLT No. 93
Parcel No. 12/43/44/45**

We have reviewed our records and find that we have existing utility facilities located within the subject right-of-way. The approximate location of these facilities is indicated on the enclosed prints. However, KUB does not release and hereby retains all easements and rights for existing utility facilities, whether or not shown on these prints.

Should this right-of-way be closed, KUB will require the following permanent easement for its utility facilities.

Electric – 25 feet on each side of the centerline of the electric line, 50 feet total width
Electric – 10 feet on each side of the centerline of the electric line, 20 feet total width
Gas – 7.5 feet on each side of the centerline of the gas line, 15 feet total width
Sewer – 7.5 feet on each side of the centerline of the wastewater line, 15 feet total width
Water – 7.5 feet on each side of the centerline of the water line, 15 feet total width

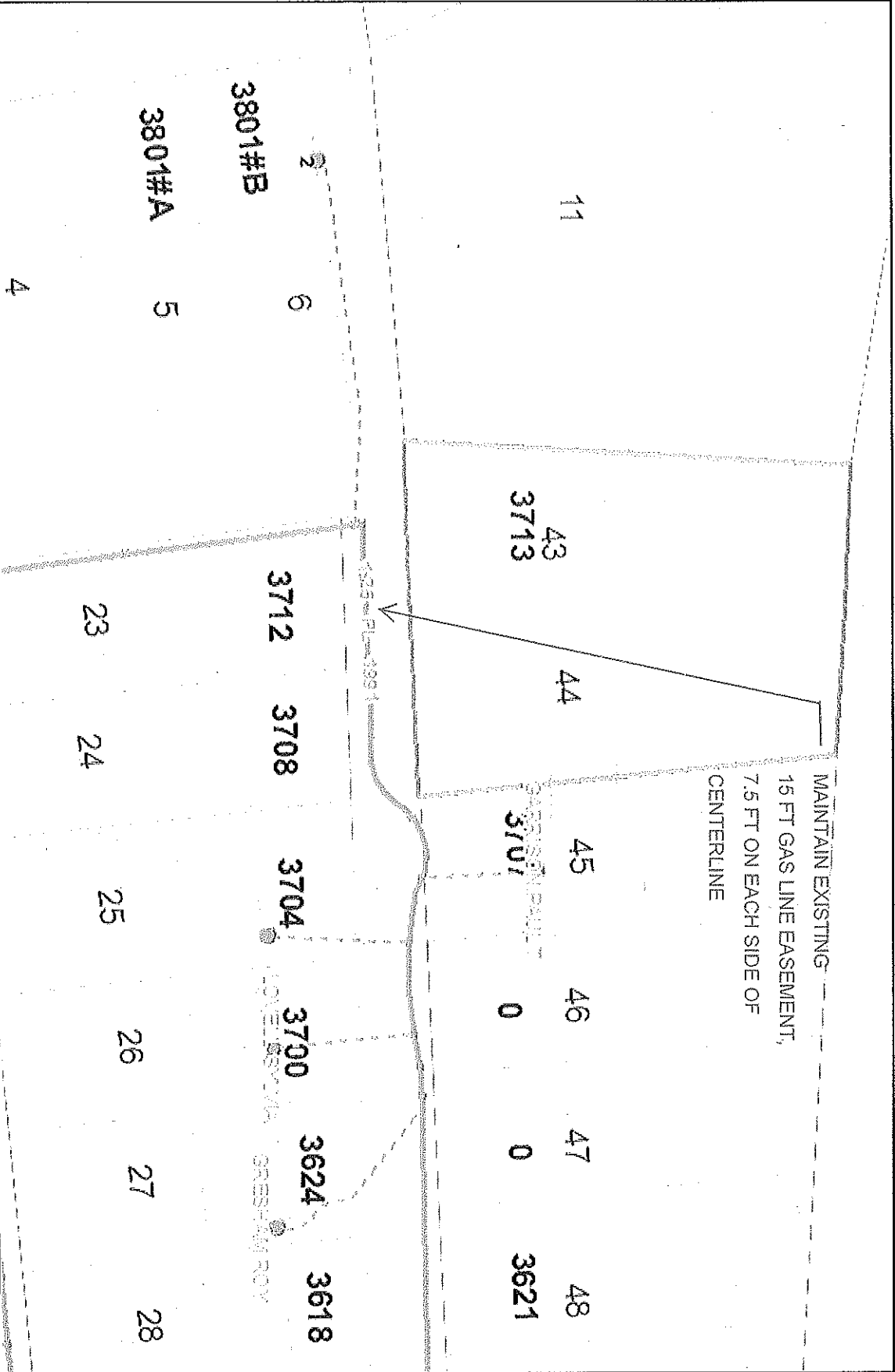
So long as these conditions are met, KUB has no objection to the closure of this right-of-way. If you have any questions regarding this matter, please call me at (865) 558-2291.

Sincerely,

Greg L. Patterson, P.E.
Engineering

GLP/ggt

Enclosure



Closure of Unnamed Alley at End of Montgomery Ave (Gas)

File No. 2-B-14-AC

Map #93

Parcel(s) 12/43/24/45

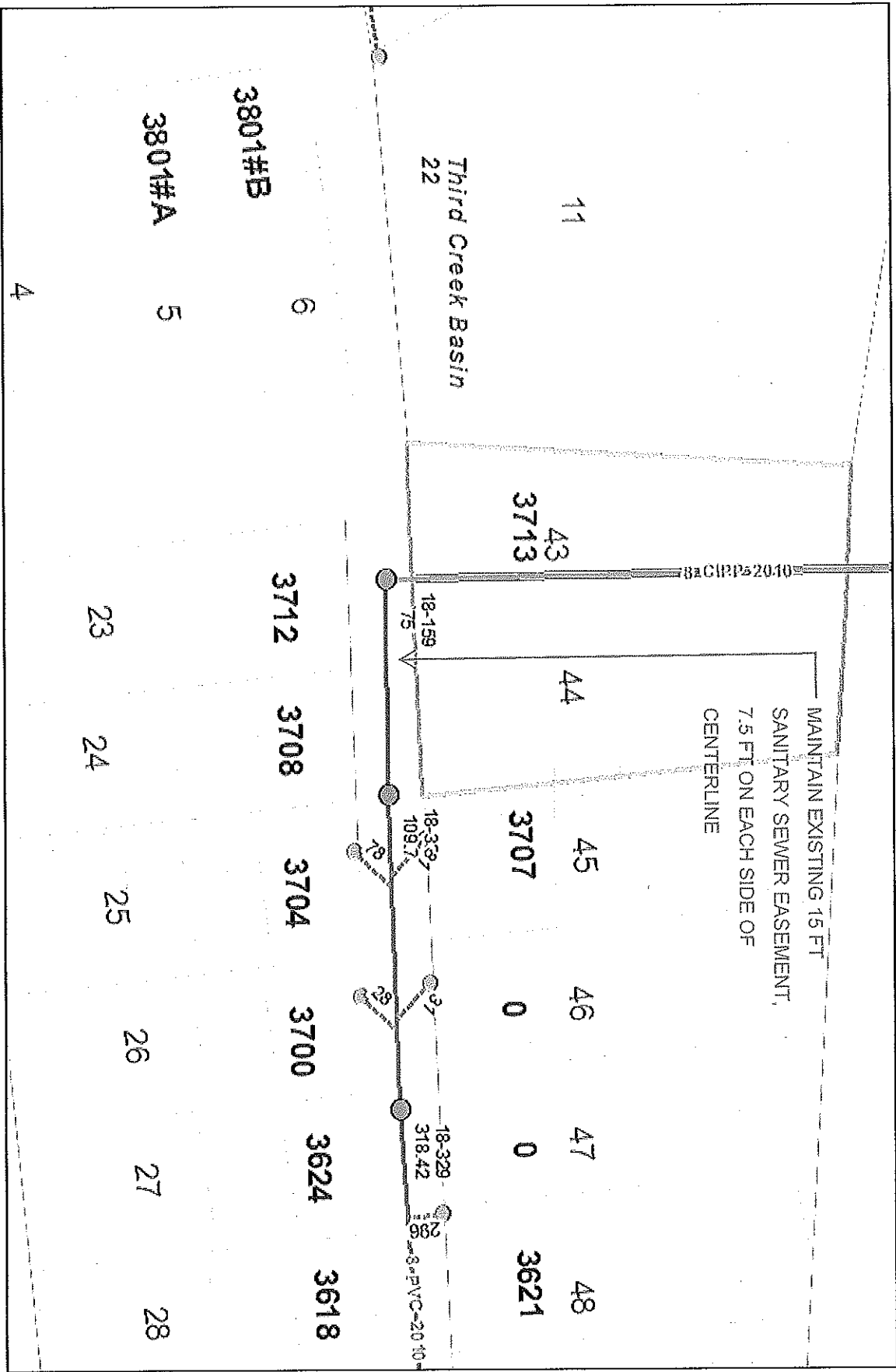
City Block #43800



Knowlton Utilities Board

Product Warning: This map was produced from the Landbase information system maintained by KUB. This map should not be relied on for engineering, design, or surveying work or other similar type uses. The information on this map is dated and has no warranty of merchantability or warranty for fitness of use for a particular purpose, express or implied. This map is produced, printed, and distributed as is, with all faults.





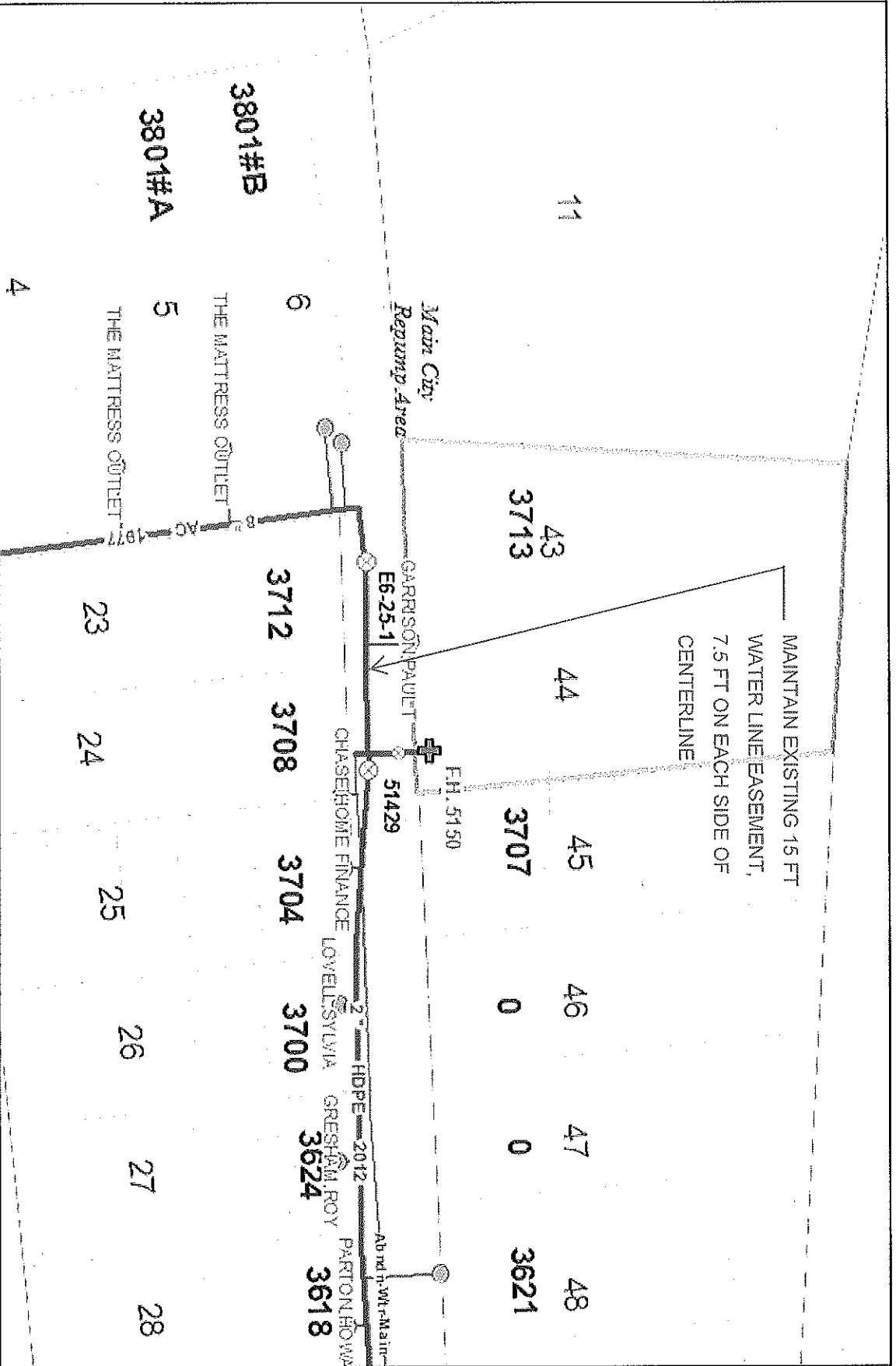
Closure of Unnamed Alley at End of Montgomery Ave (Sewer)

File No. 2-B-14-AC Map #93 Parcel(s) 12/43/4/45 City Block #43800



Product Warning: This map was produced from the Landbase information system maintained by KGIS. This map should not be relied on for engineering, design, or surveying work or other similar type uses. The information on this map is dated and has no warranty of merchantability or warranty for fitness of use for a particular purpose, express or implied. This map is produced, printed, and distributed as is, with all faults.

Printed: 07/13/2014 15:28 PM



Closure of Unnamed Alley at End of Montgomery Ave (Water)

File No. 2-B-14-AC

Map #93

Parcel(s) 12/43/4/45

City Block #43800

Printed: 01/15/2014 15:28 PM



Knowlton Utilities Board



Product Warning: This map was produced from the Landbase information system maintained by KUB. This map should not be relied on for engineering, design, or surveying work or other similar type uses. The information on this map is dated and has no warranty of merchantability or warranty of fitness of use for a particular purpose, express or implied. This map is produced, printed, and distributed as is, with all faults.