

11-A-13-SC-000 - City Fire

11-A-13-SC



Fire Prevention Bureau

City of Knoxville
400 Main Street, Suite 539
Knoxville, TN 37902

Memorandum

Date: October 23, 2013
To: Mike Brusseau
From: Sonny Partin, Deputy Fire Marshal
Subject: Request for Information on Right of Way Closures, Fire Department Review

Road Name	Review Status	Comments
1. Tillery Rd.	Approved	None

11-A-13-SC - cor KUB



Knoxville Utilities Board



October 10, 2013

Mr. Mike Brusseau
Knoxville-Knox County
Metropolitan Planning Commission
Suite 403, City-County Building
Knoxville, Tennessee 37902

Dear Mr. Brusseau:

**Re: Right-of-Way Closure Request 11-A-13-SC
Block No. 41610
CLT No. 80
Parcel No. 16 and 17**

We have reviewed our records and find that we have existing utility facilities located within the subject right-of-way. The approximate location of these facilities is indicated on the enclosed prints. However, KUB does not release and hereby retains all easements and rights for existing utility facilities, whether or not shown on these prints.

Should this right-of-way be closed, KUB will require the following permanent easement for its utility facility.

Electric – 10 feet on each side of the centerline of the electric line, 20 feet total width
Gas – 12.5 feet on each side of the centerline of the gas line, 25 feet total width
Sewer – 7.5 feet on each side of the centerline of the wastewater line, 15 feet total width
Water - 7.5 feet on each side of the centerline of the water line, 15 feet total width

So long as these conditions are met, KUB has no objection to the closure of this right-of-way. If you have any questions regarding this matter, please call me at (865) 558-2291.

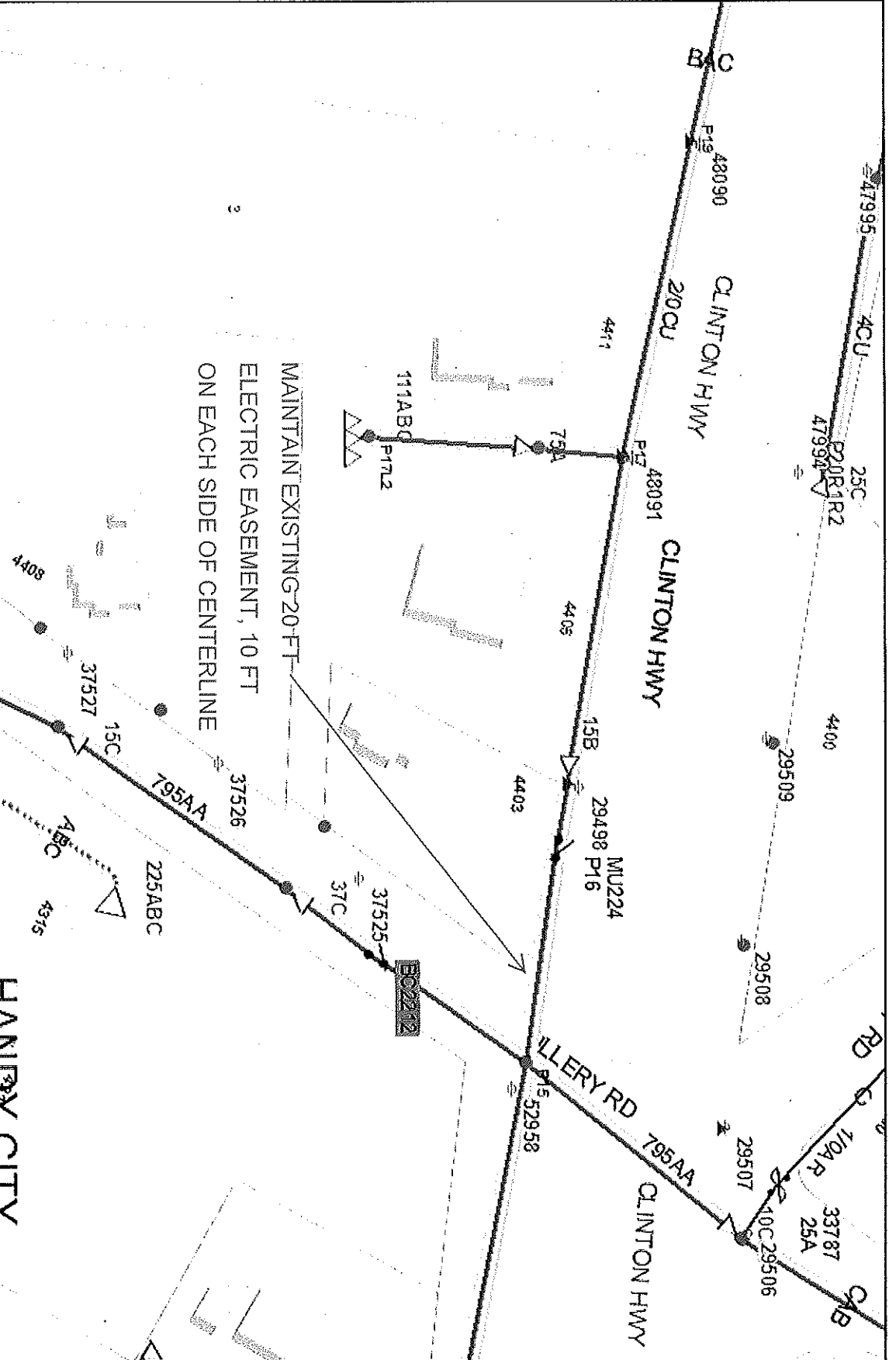
Sincerely,

A handwritten signature in cursive script that reads 'Greg Patterson'.

Greg L. Patterson, P.E.
Engineering

GLP/ggt

Enclosure



File No. 11-A-13-SC Tillery Road R.O.W. Closure (Electric)

OLI Map #80

Parcel(s) 16 & 17

City Block #41610

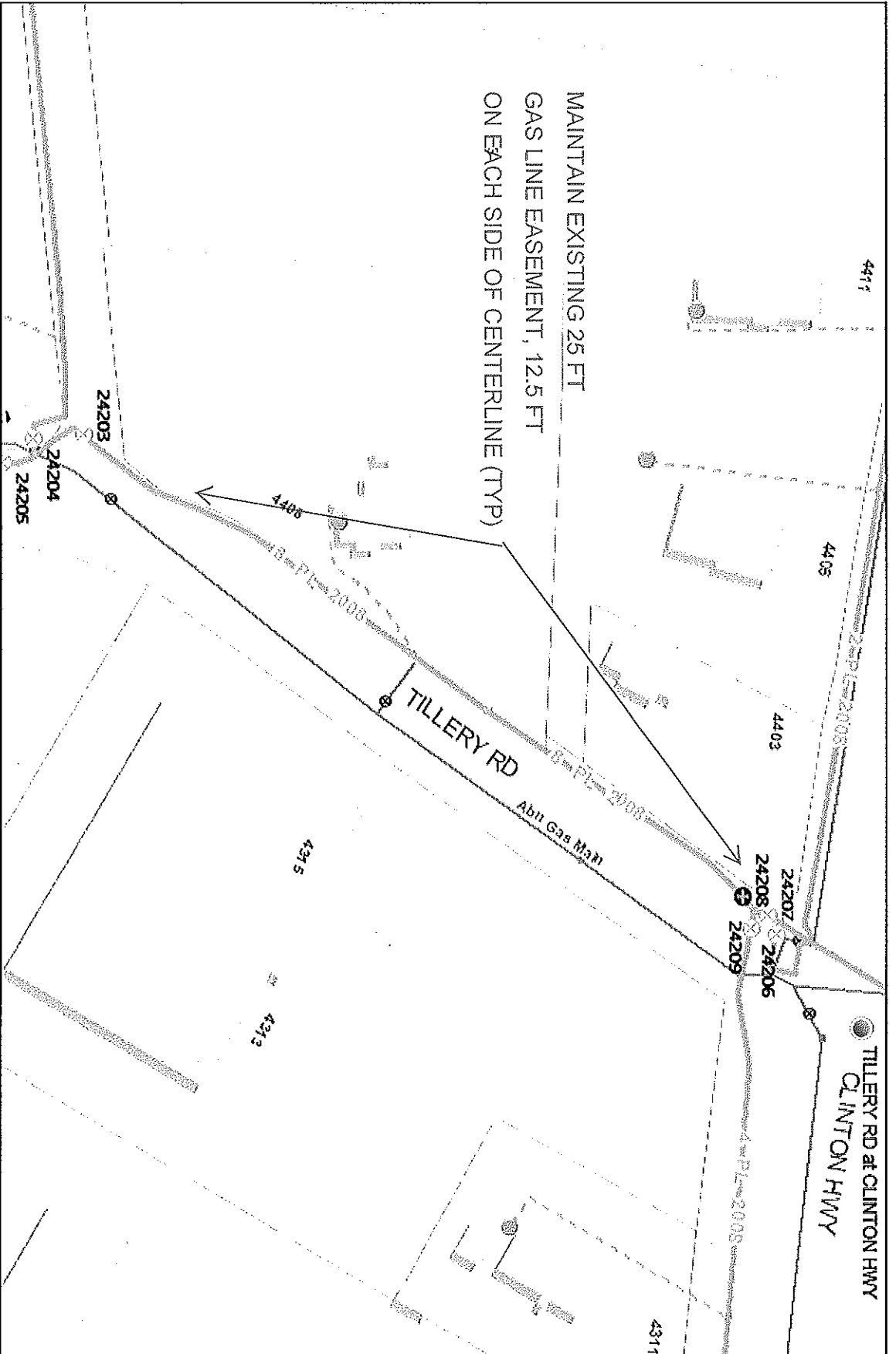
200 Feet

HANLEY CITY

Printed: 10/10/2012 11:43 AM



Known/Unknown Board
 Product Warning: This map was produced from the Lantabase information system maintained by KGIS. This map should not be relied on for engineering, design, or surveying work or other similar type uses. True information on this map is dated and has no warranty of merchantability or warranty for fitness of use for a particular purpose, express or implied. This map is produced, printed, and distributed as is, with all faults.



MAINTAIN EXISTING 25 FT
 GAS LINE EASEMENT, 12.5 FT
 ON EACH SIDE OF CENTERLINE (TYP)

File No. 11-A-13-SC

CLT Map #80

Tillery Road R.O.W. Closure

Parcel(s) 16 & 17

City Stock #41810

(Gas)

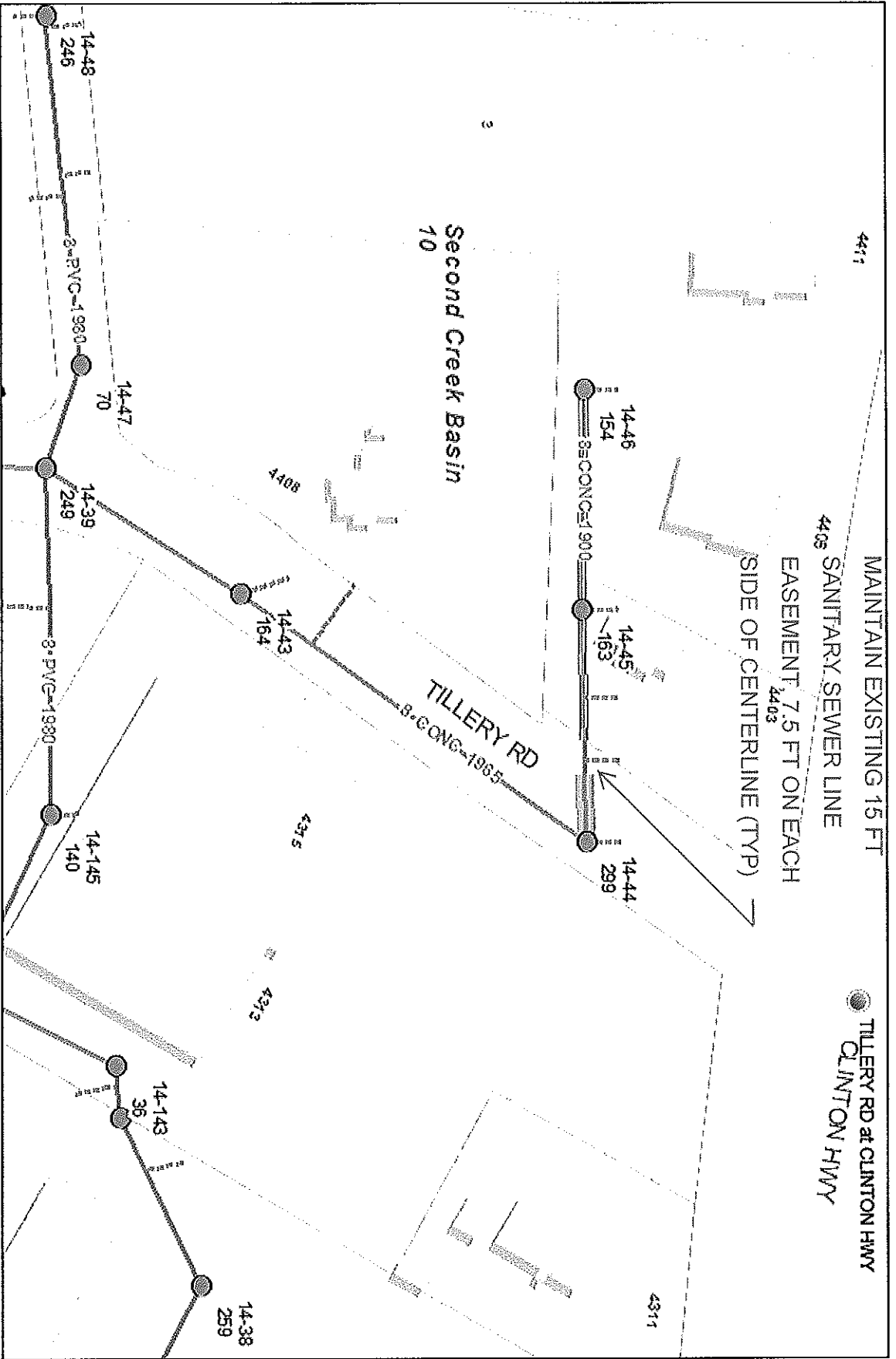
Printed: 10/10/2012 11:55 AM



Known as Utilities Board

Product Warning: This map was produced from the Landbase Information System maintained by KGIS. This map should not be relied on for engineering, design, or surveying work or other similar type uses. The information on this map is dated and has no warranty of merchantability or warranty for fitness of use for a particular purpose, express or implied. This map is produced, printed, and distributed as is, with all faults.





4411
 MAINTAIN EXISTING 15 FT
 4408 SANITARY SEWER LINE
 EASEMENT, 7.5 FT ON EACH
 4403 SIDE OF CENTERLINE (TYP)
 TILLEY RD at CLINTON HWY
 CLINTON HWY

3
 Second Creek Basin
 10

File No. 11-A-13-SC Tillery Road R.O.W. Closure (Sewer)

CLT Map #80

Parcel(s) 16 & 17

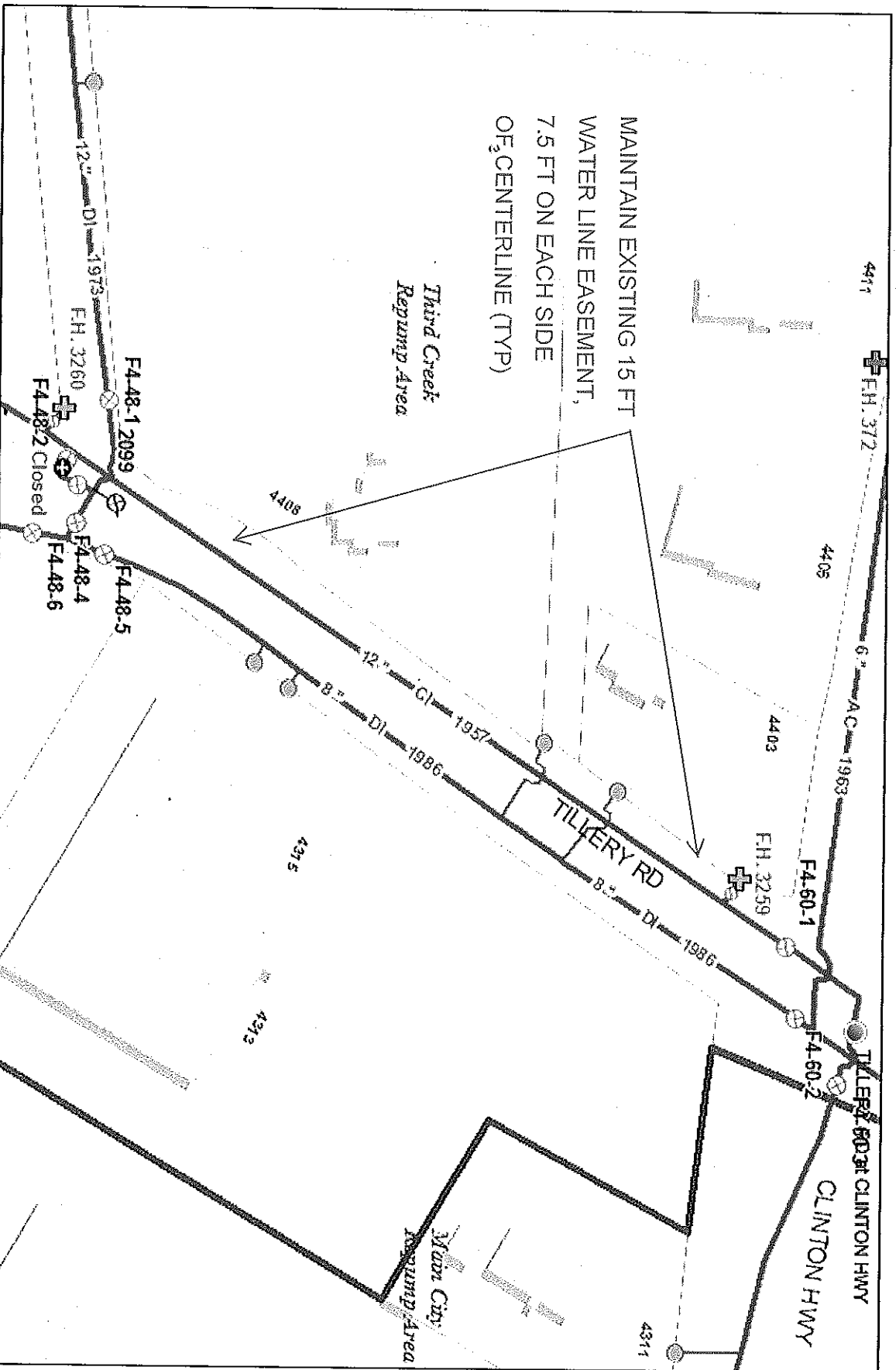
City Block #41610



Known: Utilities Board
 Product Warning: This map was produced from the Landbase Information system maintained by KUB. This map should not be relied on for engineering, design, or surveying work or other similar type uses. The information on this map is dated and has no warranty of merchantability or warranty for fitness of use for a particular purpose, express or implied. This map is produced, printed, and distributed as is, with all faults.

Printed: 10/10/2012 11:50 AM

MAINTAIN EXISTING 15 FT
WATER LINE EASEMENT,
7.5 FT ON EACH SIDE
OF CENTERLINE (TYP)



File No. 11-A-13-SC Tillery Road R.O.W. Closure (Water)
 CLT Map #80 Parcel(s) 16 & 17 City Block #41610



Known Utilities Board
 Product Warning: This map was produced from the Landbase Information System maintained by KGIS. This map should not be relied on for engineering, design, or surveying work or other similar-type uses. The information on this map is dated and has no warranty of merchantability or warranty for fitness of use for a particular purpose, express or implied. This map is produced, printed, and distributed as is, with all faults.

Printed: 10/20/13 11:50 AM