

3-C-14-SC-Cor-CityFire



Fire Prevention Bureau

City of Knoxville
400 Main Street, Suite 539
Knoxville, TN 37902

Memorandum

Date: February 13, 2014
To: Mike Brusseau
From: Sonny Partin, Deputy Fire Marshal
Subject: Request for Information on Right of Way Closures, Fire Department Review

	Sector Name	Review Status	Comments
1.	3-A-14-AC	Approved	None
2.	3-B-14-AC	Approved	None
3.	3-A-14-SC	Approved	None
4.	3-B-14-SC	Approved	None
5.	3-C-14-SC	Approved	None



Knoxville Utilities Board

3-C-14-SC-COR-KUB



February 14, 2014

Mr. Mike Brusseau
Knoxville-Knox County
Metropolitan Planning Commission
Suite 403, City-County Building
Knoxville, Tennessee 37902

Dear Mr. Brusseau:

**Re: Right-of-Way Closure Request 3-C-14-SC
Block No. 23843, 23842, 23900
CLT No. 94
Parcel No. 1081 & 1083**

We have reviewed our records and find that we have existing utility facilities located within the subject right-of-way. The approximate location of these facilities is indicated on the enclosed prints. However, KUB does not release and hereby retains all easements and rights for existing utility facilities, whether or not shown on these prints.

Should this right-of-way be closed, KUB will require the following permanent easement for its utility facility.

Sewer – 7.5 feet on each side of the centerline of the wastewater line, 15 feet total width
Water – 7.5 feet on each side of the centerline of the water line, 15 feet total width

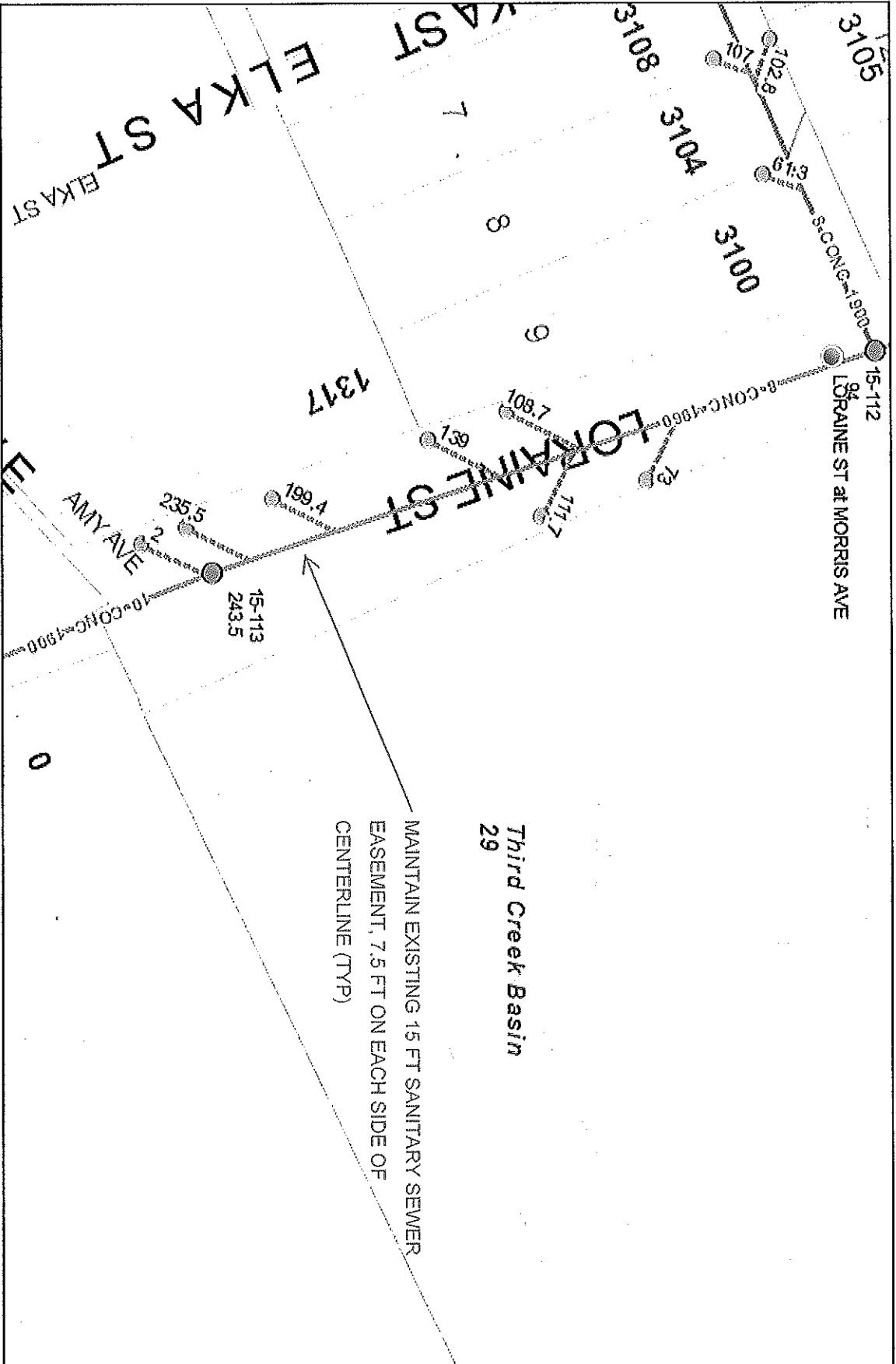
So long as these conditions are met, KUB has no objection to the closure of this right-of-way. If you have any questions regarding this matter, please call me at (865) 558-2291.

Sincerely,

Greg L. Patterson, P.E.
Engineering

GLP/ggt

Enclosure



No.3-C-14-SC Lorraine St between Morris Ave & Parcel(s) 1081/1083

CLT MAP #94

CITY BLOCK #23843, 23842, 23900

PARCEL(S) 1081 & 1083



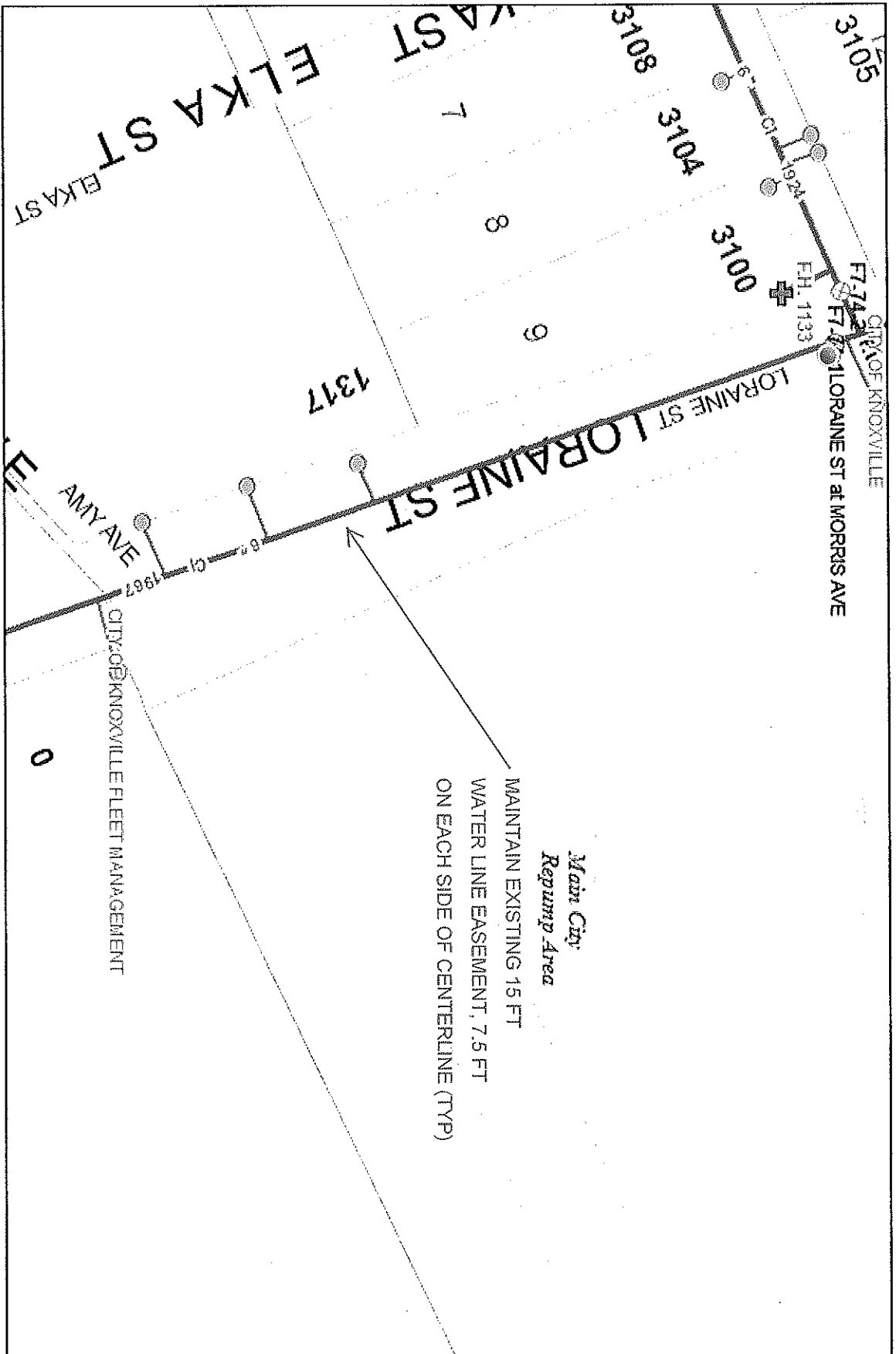
Known to Utilities Board

Product Warning: This map was produced from the Landbase information system maintained by KGIS. This map should not be relied on for engineering, design, or surveying work or other similar type uses. The information on this map is dated and has no warranty of merchantability or warranty for fitness of use for a particular purpose, express or implied. This map is produced, printed, and distributed as is, with all faults.



Printed: 02/12/2014 13:56 PM





No.3-C-14-SC Loraine St between Morris Ave & Parcel(s) 1081/1083

CIT MAP #94

CITY BLOCK #23843, 23842, 23900

PARCEL(S) 1081 & 1083



Knowlde Utilities Board

100 Feet



Printed: 02/12/2014 1:55:56 PM

Product Warning: This map was produced from the Landbase information system maintained by KUB. This map should not be relied on for engineering, design, or surveying work or other similar type uses. The information on this map is dated and has no warranty of merchantability or warranty for fitness of use for a particular purpose, express or implied. This map is produced, printed, and distributed as is, with all faults.