



6-A-16-SC-cor-KUB



May 26, 2016

Mr. Mike Brusseau
Knoxville-Knox County
Metropolitan Planning Commission
Suite 403, City-County Building
Knoxville, Tennessee 37902

Dear Mr. Brusseau:

**Re: Right-of-Way Closure Request 6-A-16-SC
Block No. 11402 & 11503
CLT No. 81
Parcel No. Between parcels 1,16,17,18 and 19**

We have reviewed our records and find that we have existing utility facilities located within the subject right-of-way. The approximate location of these facilities is indicated on the enclosed prints. However, KUB does not release and hereby retains all easements and rights for existing utility facilities, whether or not shown on these prints.

Should this right-of-way be closed, KUB will require the following permanent easement for its utility facilities.

Electric – 10 feet on each side of the centerline of the electric line, 20 feet total width
Sewer – 7.5 feet on each side of the centerline of the wastewater line, 15 feet total width

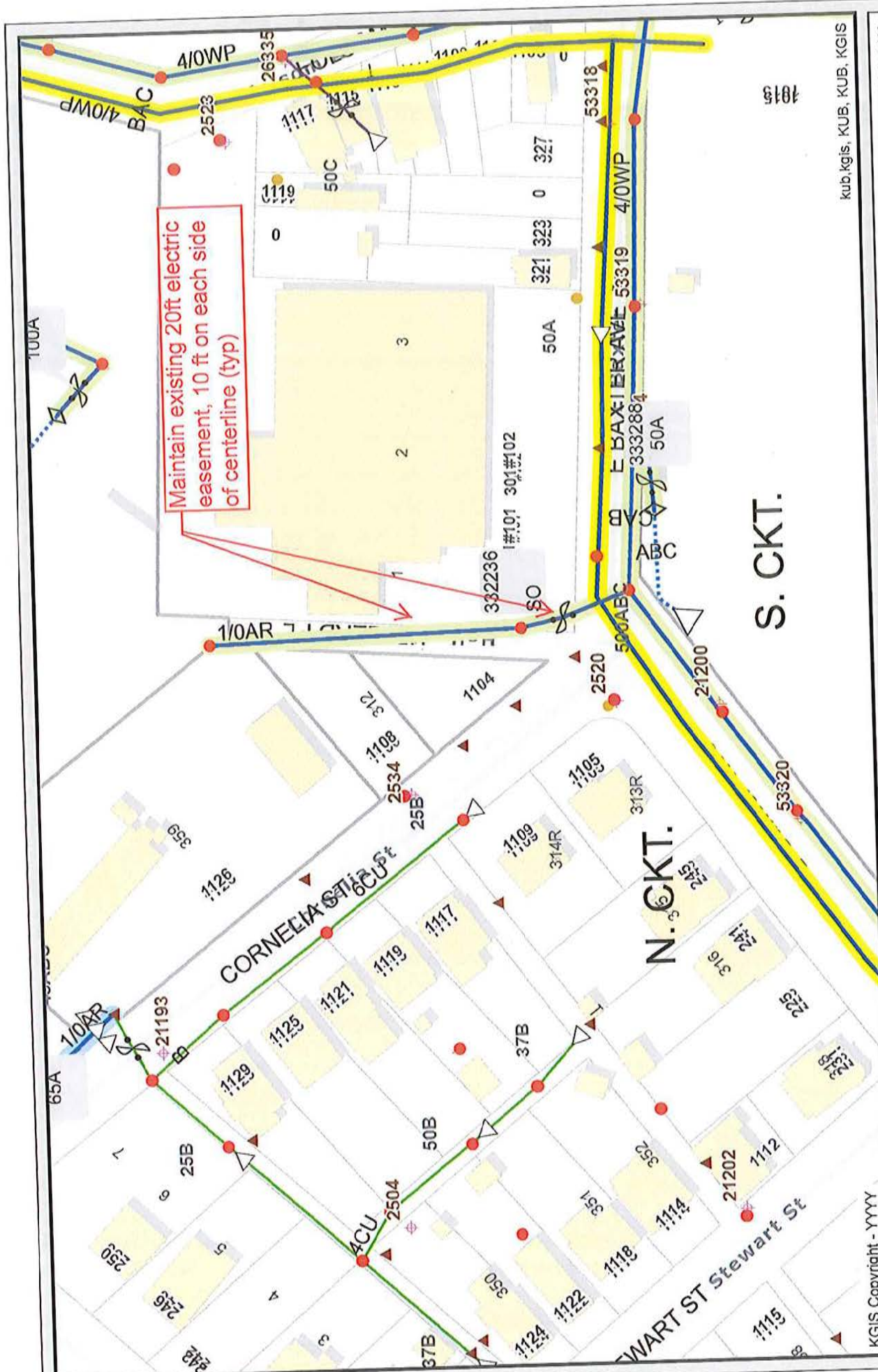
So long as these conditions are met, KUB has no objection to the closure of this right-of-way. If you have any questions regarding this matter, please call me at (865) 558-2291.

Sincerely,

Greg L. Patterson, P.E.
Engineering

GLP/ggt

Enclosure



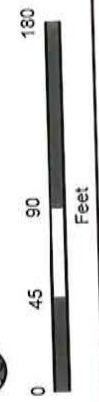
Maintain existing 20ft electric easement, 10 ft on each side of centerline (typ)

S. CKT.

N. CKT.

kub.kgis, KUB, KUB, KGIS

Printed: 5/26/2016 at 8:29:02 AM



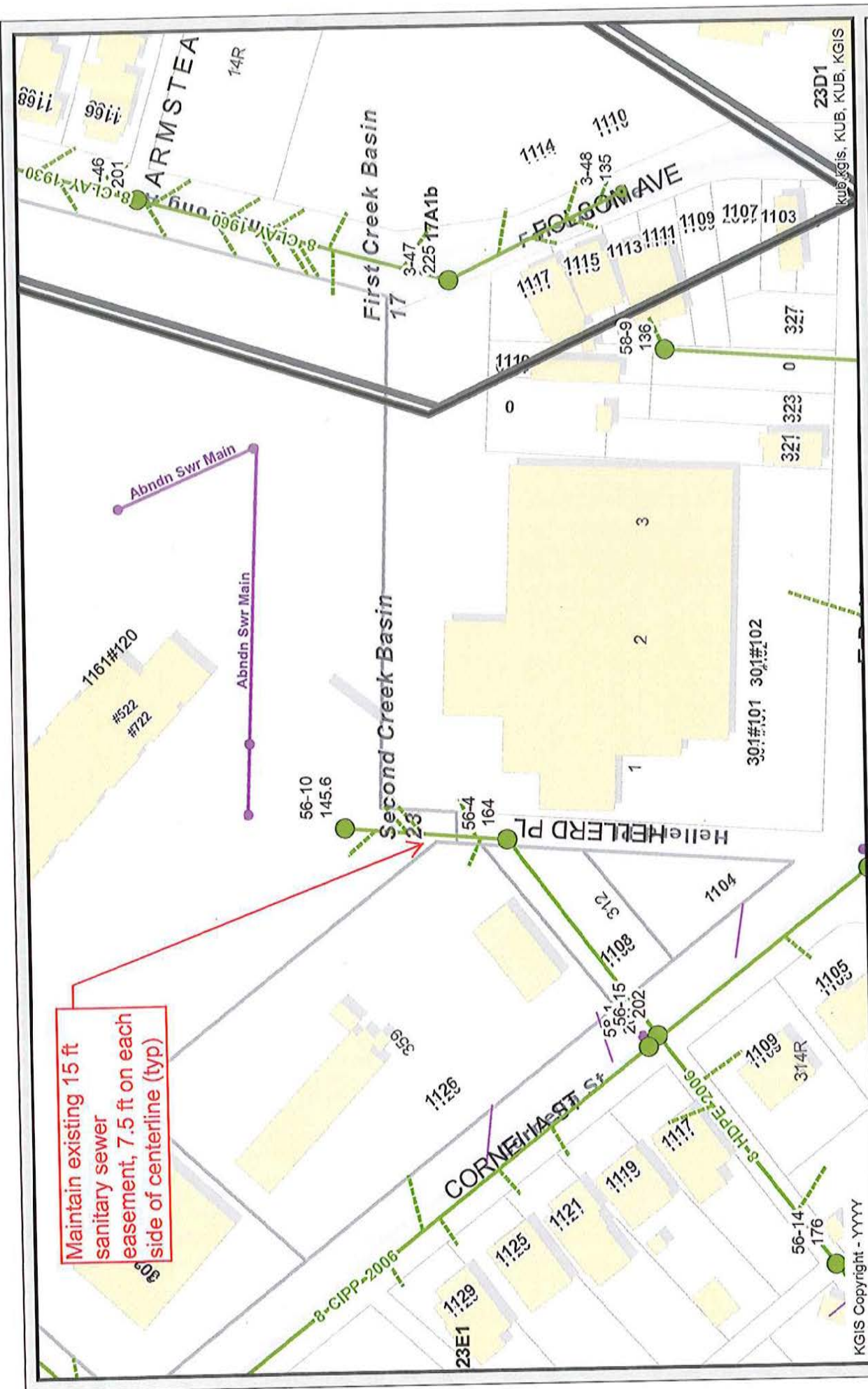
File No. 6-A-16-SC Closure of Hellered Place (Electric)

City Blocks 11402 & 11503 CLT Map #81
Between Parcels 1, 16, 17, 18 and 19

Knoxville - Knox County - KUB Geographic Information System

KGIS Copyright - YYYY

KGIS makes no representation or warranty as to the accuracy of this map and its information nor to its fitness for use. Any user of this map product accepts the same AS IS, WITH ALL FAULTS, and assumes all responsibility for the use thereof, and further covenants and agrees to hold KGIS harmless from any and all damage, loss, or liability arising from any use of this map product.



Maintain existing 15 ft sanitary sewer easement, 7.5 ft on each side of centerline (typ)

Printed: 5/16/2016 at 1:18:17 PM



File No. 6-A-16-SC Closure of Hellerd Place (Sewer)

City Blocks 11402 & 11503 CLT Map #81
Between Parcels 1, 16, 17, 18, and 19

Knoxville - Knox County - KUB Geographic Information System

KGIS makes no representation or warranty as to the accuracy of his map and its information nor to its fitness for use. Any user of this map product accepts the same AS IS, WITH ALL FAULTS, and assumes all responsibility for the use thereof, and further covenants and agrees to hold KGIS harmless from any and all damage, loss, or liability arising from any use of this map product.

KGIS Copyright - YYYY