



Knoxville Utilities Board

10-A-16-AC.cor KUB



October 6, 2016

Mr. Mike Brusseau  
Knoxville-Knox County  
Metropolitan Planning Commission  
Suite 403, City-County Building  
Knoxville, Tennessee 37902

Dear Mr. Brusseau:

**Re: Right-of-Way Closure Request 10-A-16-AC  
Block No. 10442  
CLT No. 108  
Parcel No. 17, 15R, 24, 25, and 26**

We have reviewed our records and find that we have existing utility facilities located within the subject right-of-way. The approximate location of these facilities is indicated on the enclosed prints. However, KUB does not release and hereby retains all easements and rights for existing utility facilities, whether or not shown on these prints.

Should this right-of-way be closed, KUB will require the following permanent easement for its utility facility.

- Electric – 10 feet on each side of the centerline of the electric line, 20 feet total width
- Gas – 7.5 feet on each side of the centerline of the gas line, 15 feet total width
- Sewer – 7.5 feet on each side of the centerline of the wastewater line, 15 feet total width

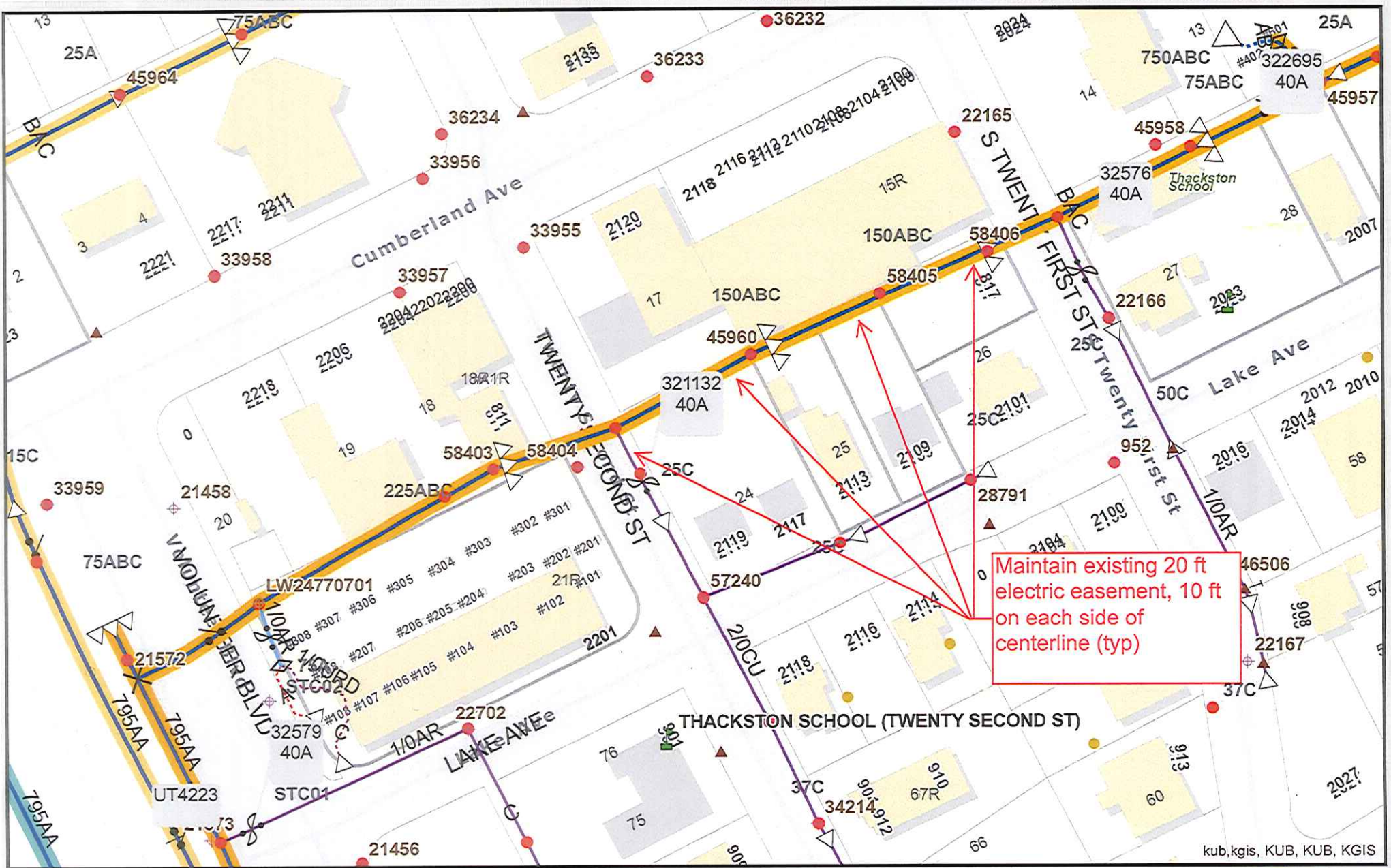
So long as these conditions are met, KUB has no objection to the closure of this right-of-way. If you have any questions regarding this matter, please call me at (865) 558-2291.

Sincerely,

Greg L. Patterson, P.E.  
Engineering

GLP/ggt

Enclosure



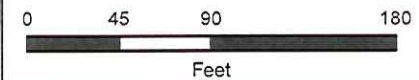
### File No. 10-A-16-AC Unnamed Alley (Electric)

CLT Map #108 City Block #10442 Parcels 17, 15R, 24, 25, 26

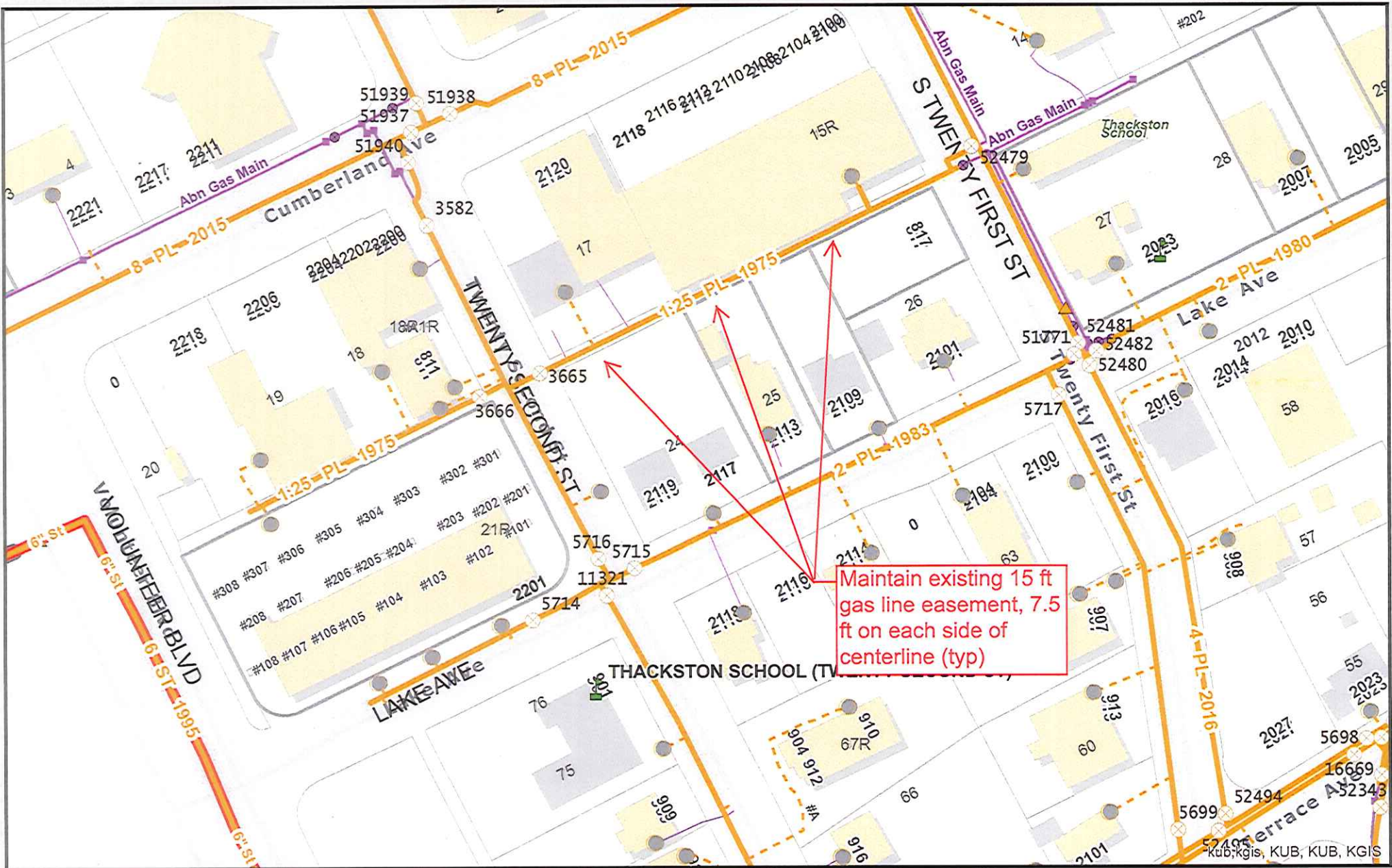
### Knoxville Utilities Board



Printed: 9/22/2016 at 3:30:08 PM



KUB makes no representation or warranty as to the accuracy of his map and its information nor to its fitness for use. Any user of this map product accepts the same AS IS .WITH ALL FAULTS, and assumes all responsibility for the use thereof, and futher covenants and agrees to hold KUB harmless from any and all damage, loss, or liability arising from any use of this map product. All rights reserved.



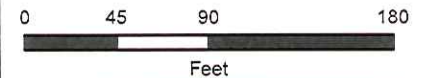
**File No. 10-A-16-AC Unnamed Alley (Gas)**

CLT Map #108 City Block #10442 Parcels 17, 15R, 24, 25, 26

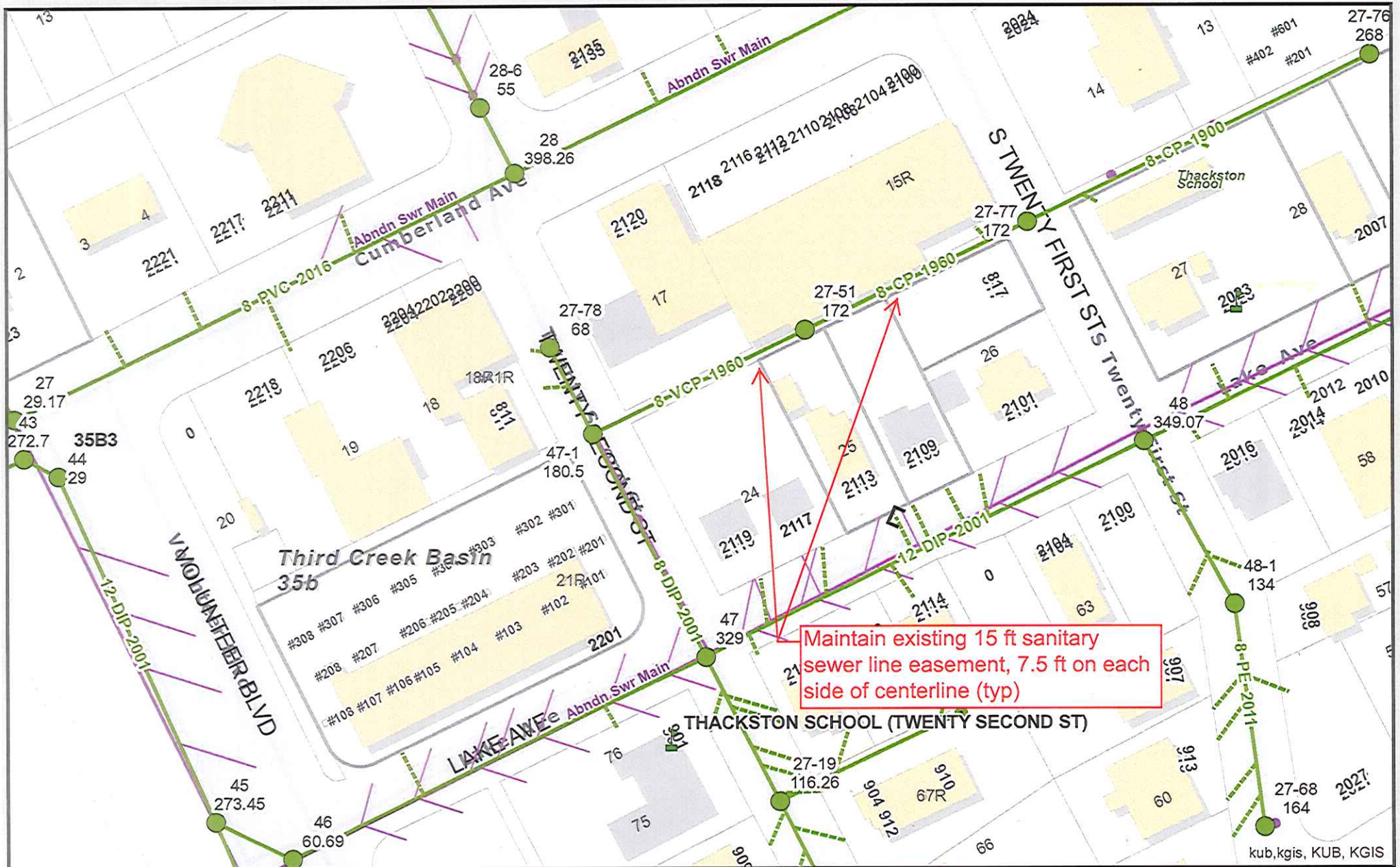
**Knoxville Utilities Board**



Printed: 9/22/2016 at 3:32:48 PM



KUB makes no representation or warranty as to the accuracy of his map and its information nor to its fitness for use. Any user of this map product accepts the same AS IS ,WITH ALL FAULTS, and assumes all responsibility for the use thereof, and futher covenants and agrees to hold KUB harmless from any and all damage, loss, or liability arising from any use of this map product. All rights reserved.



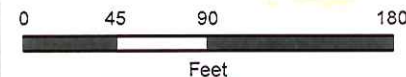
**File No. 10-A-16-AC Unnamed Alley (Sewer)**

CLT Map #108 City Block #10442 Parcels 17, 15R, 24, 25, 26

**Knoxville Utilities Board**



Printed: 9/22/2016 at 3:25:39 PM



KUB makes no representation or warranty as to the accuracy of his map and its information nor to its fitness for use. Any user of this map product accepts the same AS IS ,WITH ALL FAULTS, and assumes all responsibility for the use thereof, and futher covenants and agrees to hold KUB harmless from any and all damage, loss, or liability arising from any use of this map product. All rights reserved.