



Betty Jo Mahan &lt;bettyjo.mahan@knoxmpc.org&gt;

---

**[MPC Comment] Fwd: Parking Ordinance**

1 message

---

**Gerald Green** <gerald.green@knoxmpc.org>  
Reply-To: gerald.green@knoxmpc.org  
To: Planning Commissioners <commission@knoxmpc.org>

Thu, Apr 13, 2017 at 9:44 AM

Good morning,

A comment regarding the parking ordinance update.

Gerald  
**Gerald Green AICP**  
Executive Director  
Knoxville-Knox County  
Metropolitan Planning Commission  
400 Main Street, Suite 403  
Knoxville, TN 37902  
[865.215.3758](tel:865.215.3758)  
[gerald.green@knoxmpc.org](mailto:gerald.green@knoxmpc.org)

----- Forwarded message -----

From: **Tim Hill** <[tim@hatcherhill.com](mailto:tim@hatcherhill.com)>  
Date: Tue, Apr 12, 2017 at 6:23 PM  
Subject: Parking Ordinance  
To: Gerald Green <[gerald.green@knoxmpc.org](mailto:gerald.green@knoxmpc.org)>  
Cc: Amy Nolan <[anolan@knoxvillechamber.com](mailto:anolan@knoxvillechamber.com)>

Gerald:

Please see attached site plan for one of our shopping centers in Farragut. Farragut has some of the most restrictive ordinances in the region. The interior islands allow 15 spaces to each island and 19 spaces to perimeter islands.

Thank you,

Tim Hill  
Hatcher-Hill Properties, LLC  
311 S. Weisgarber Road  
Knoxville, TN 37919  
[tim@hatcherhill.com](mailto:tim@hatcherhill.com)  
[865.719.7538](tel:865.719.7538)

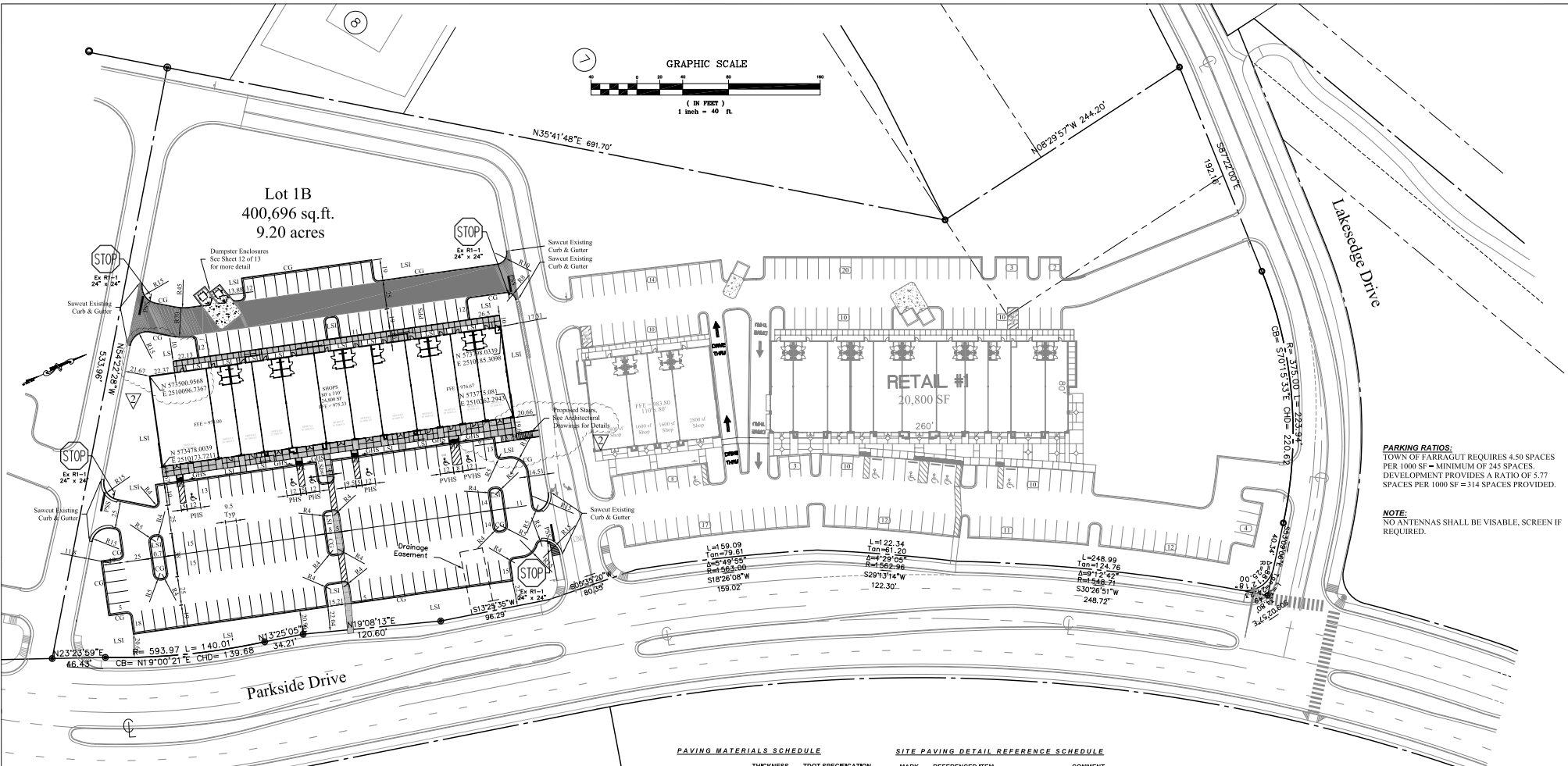
--

---

This message was directed to [commission@knoxmpc.org](mailto:commission@knoxmpc.org)

**Site Plan-Village At Parkside.pdf**

1436K



**PARKING RATIOS:**  
 TOWN OF FARRAGUT REQUIRES 4.50 SPACES PER 1000 SF = MINIMUM OF 245 SPACES.  
 DEVELOPMENT PROVIDES A RATIO OF 5.77 SPACES PER 1000 SF = 314 SPACES PROVIDED.

**NOTE:**  
 NO ANTENNAS SHALL BE VISIBLE, SCREEN IF REQUIRED.

**PAVING MATERIALS SCHEDULE**

	THICKNESS	DOT SPECIFICATION
<b>LIGHT DUTY PAVING</b>		
BASE LIFT	6"	TYPE A, GRADE D AGGREGATE
ASPHALTIC BINDER	2.5"	TYPE B BINDER MIX
ASPHALTIC TOPPING	1"	TYPE E SURFACE MIX
PRIME COAT	0.25 GAL PER SQ. YD.	OVER TOP BASE LIFT
TACK COAT	0.05-0.10 GAL PER SQ. YD.	
<b>HEAVY DUTY PAVING</b>		
BASE LIFT	6"	TYPE A, GRADE D AGGREGATE
ASPHALTIC BINDER	2.5"	TYPE B BINDER MIX
ASPHALTIC TOPPING	1.5"	TYPE E SURFACE MIX
PRIME COAT	0.25 GAL PER SQ. YD.	OVER TOP BASE LIFT
TACK COAT	0.05-0.10 GAL PER SQ. YD.	
<b>CONCRETE PAVING</b>		
BASE LIFT	4"	TYPE A, GRADE D AGGREGATE
CONCRETE PAVING	7"	PCC, (4000 PSI @ 28 DAYS)

**SITE PAVING DETAIL REFERENCE SCHEDULE**

MARK	REFERENCED ITEM	COMMENT
BL	BOLLARD	
CG	CONCRETE CURB & GUTTER	
EC	EXTRUDED CURB	
CJ	PAVING JOINT	REF BLDG DWG
GS	ABOVE GRADE SIGN	TYPE OF SIGN
GHS	ABOVE GRADE HANDICAP SIGN	TYPE EA PHS
HR	HANDICAP RAMP	
LSI	LANDSCAPE ISLAND	
PDA	PAINT DIRECTIONAL ARROW	
PFS	PAINT FIRE LANE STRIPE	
PHS	PAINT CAR HANDICAP SPACE	
PVHS	PAINT VAN HANDICAP SPACE	
PLS	PAINTED LANE STRIPING	
PSP	PAINTED PARKING STRIPES	
PSS	PAINTED STOP BAR	24" WIDE SOLID WHITE STRIPE
WS	PRECAST WHEEL STOP	

**LEGEND:**

- HEAVY-DUTY ASPHALT PAVEMENT
- LIGHT-DUTY ASPHALT PAVEMENT
- CONCRETE PAVEMENT
- SIDEWALK



**IF YOU DIG TENNESSEE...  
 CALL US FIRST!**  
 1-800-351-1111  
 615-366-1987  
 NASHVILLE AREA  
 TENNESSEE ONE CALL SYSTEM, INC.  
 IT'S THE LAW

**GBS Engineering**  
 1313 Kalmia Road  
 Knoxville, TN 37909  
 Phn: 865.566.0185  
 Fax: 888.485.7005



REV.	DESCRIPTION	BY	DATE
1	Per Town of Farragut comments	-	04/12/07
2	Revised per Town of Farragut comments dated, 04/19/07	-	04/30/07
-	-	-	-
-	-	-	-
-	-	-	-
-	-	-	-

TITLE: Site Layout Plan	DRAWN BY: -	SHEET NO: C3
LOCATION: Parkside Station, Phase II 11671 Parkside Drive Farragut, Tennessee, CLT Map 130, Parcel No. 19104	CHECKED BY: -	
Owner: Parkside Station West Partnership	FILE NAME: Layout Plan	
	JOB NUMBER: 1017	
	ISSUE DATE: 03/19/07	