

12-A-17-SC - cor. City Eng



CITY OF KNOXVILLE

Engineering
James R. Hagerman, P.E.
Director of Engineering

November 8, 2017

Mr. Mike Brusseau, AICP, Senior Planner
Knoxville-Knox County Metropolitan Planning Commission
City-County Building, Suite 403
Knoxville, Tennessee 37902

SUBJECT: Closure of a portion of Minnesota Ave between Sherman St and Stonewall St
MPC File # 12-A-17-SC; Nearby City Block 19411 and 19412

Mr. Brusseau:

The City Engineering Department has no objections to close the above described right-of-way area.

Sincerely,

A handwritten signature in cursive script that reads "Benjamin D. Davidson".

Benjamin D. Davidson, PLS, Technical Services Administrator
Department of Engineering
Ph: 865-215-4615

12-A-17-SC - cor - CityFire



Fire Prevention Bureau

City of Knoxville
400 Main Street, Suite 539
Knoxville, TN 37902

Memorandum

Date: November 29, 2017
To: Mike Brusseau
From: Sonny Partin, Deputy Fire Marshal
Subject: Request for Information on Right of Way Closures, Fire Department Review

Road Name	Review Status	Comments
1. Stonewall and Sherman 12-A-17-AC	Approved	None
2. Stonewall and Sherman 12-B-17-AC	Approved	None
3. Minnesota Ave. <i>12-A-17-SC</i>	Disapproved	Minnesota is needed for fire dept. access to Sam Hill School.

12-A-17-SC - cor - Fire - revised



Fire Prevention Bureau

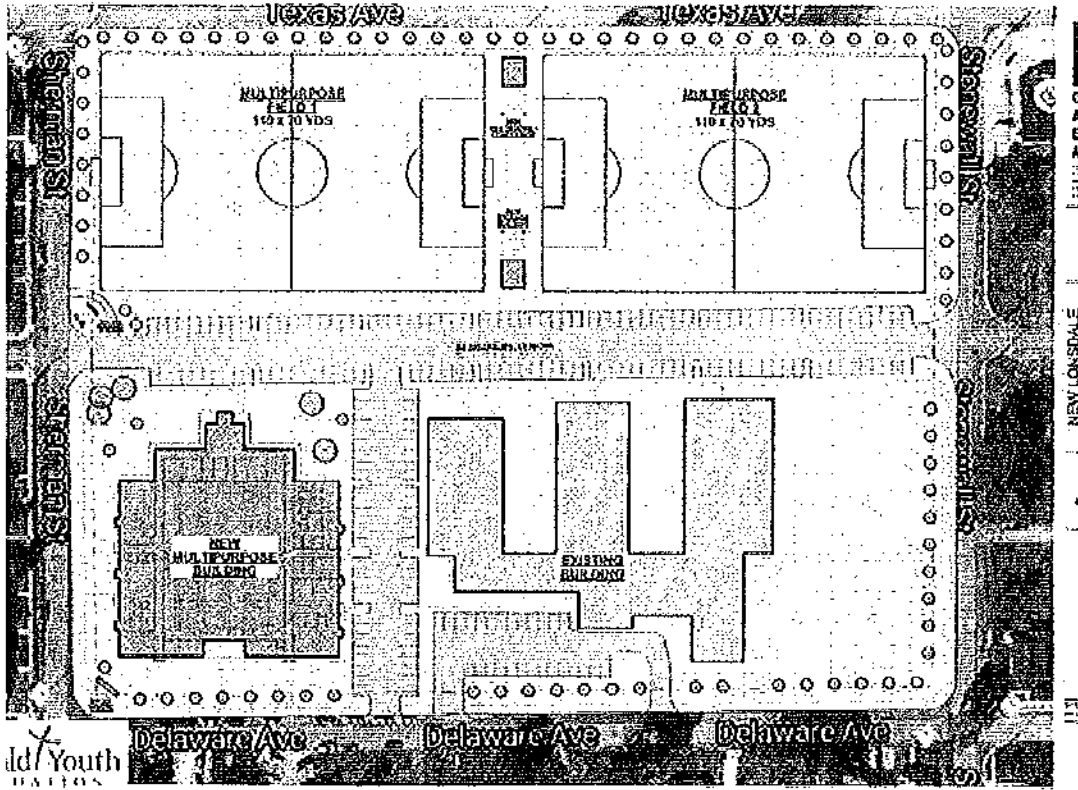
City of Knoxville
400 Main Street, Suite 539
Knoxville, TN 37902



Memorandum

Date: December 1, 2017
To: Mike Brusseau
From: Sonny Partin, Deputy Fire Marshal
Subject: Request for Information on Right of Way Closures, Fire Department Review

Road Name	Review Status	Comment
1. Minnesota Ave. 12-A-17-SC Revised 12/1/17	Approved	New developme: will allow access to existing Sam Hill School



Old Youth
HALLS



Knoxville Utilities Board

12-A-17-SC-COR-KUB



November 30, 2017

Mr. Mike Brusseau
Knoxville-Knox County
Metropolitan Planning Commission
Suite 403, City-County Building
Knoxville, Tennessee 37902

Dear Mr. Brusseau:

**Re: Right-of-Way Closure Request 12-A-17-SC
Block No. 19411 and 19412
CLT No. 18**

We have reviewed our records and find that we have existing utility facilities located within the subject right-of-way. The approximate location of these facilities is indicated on the enclosed prints. However, KUB does not release and hereby retains all easements and rights for existing utility facilities, whether or not shown on these prints.

Should this right-of-way be closed, KUB will require the following permanent easement for its utility facility.

Electric – 25 feet on each side of the centerline of the electric line, 50 feet total width
Gas – 7.5 feet on each side of the centerline of the gas line, 15 feet total width
Sewer – 7.5 feet on each side of the centerline of the wastewater line, 15 feet total width
Water – 7.5 feet on each side of the centerline of the water line, 15 feet total width

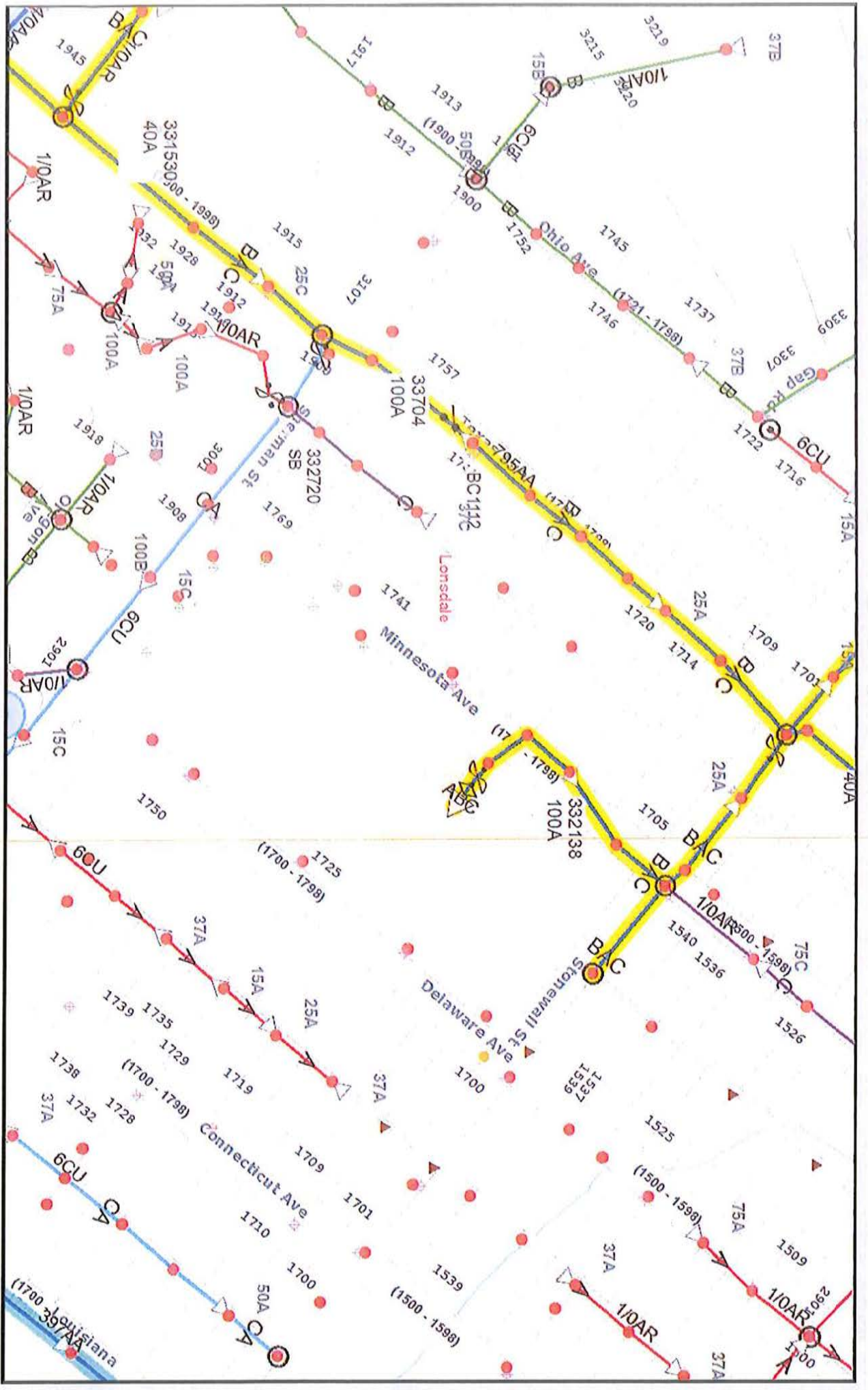
So long as these conditions are met, KUB has no objection to the closure of this right-of-way. If you have any questions regarding this matter, please call me at (865) 558-2291.

Sincerely,

Christian G. Wiberley
Engineering

CGW/ggt

Enclosure



File No. 12-A-17-SC Minnesota Ave btwn Stonewall St and Sherman St (Electric)

City Block 19411 & 19412 CLT Map #18

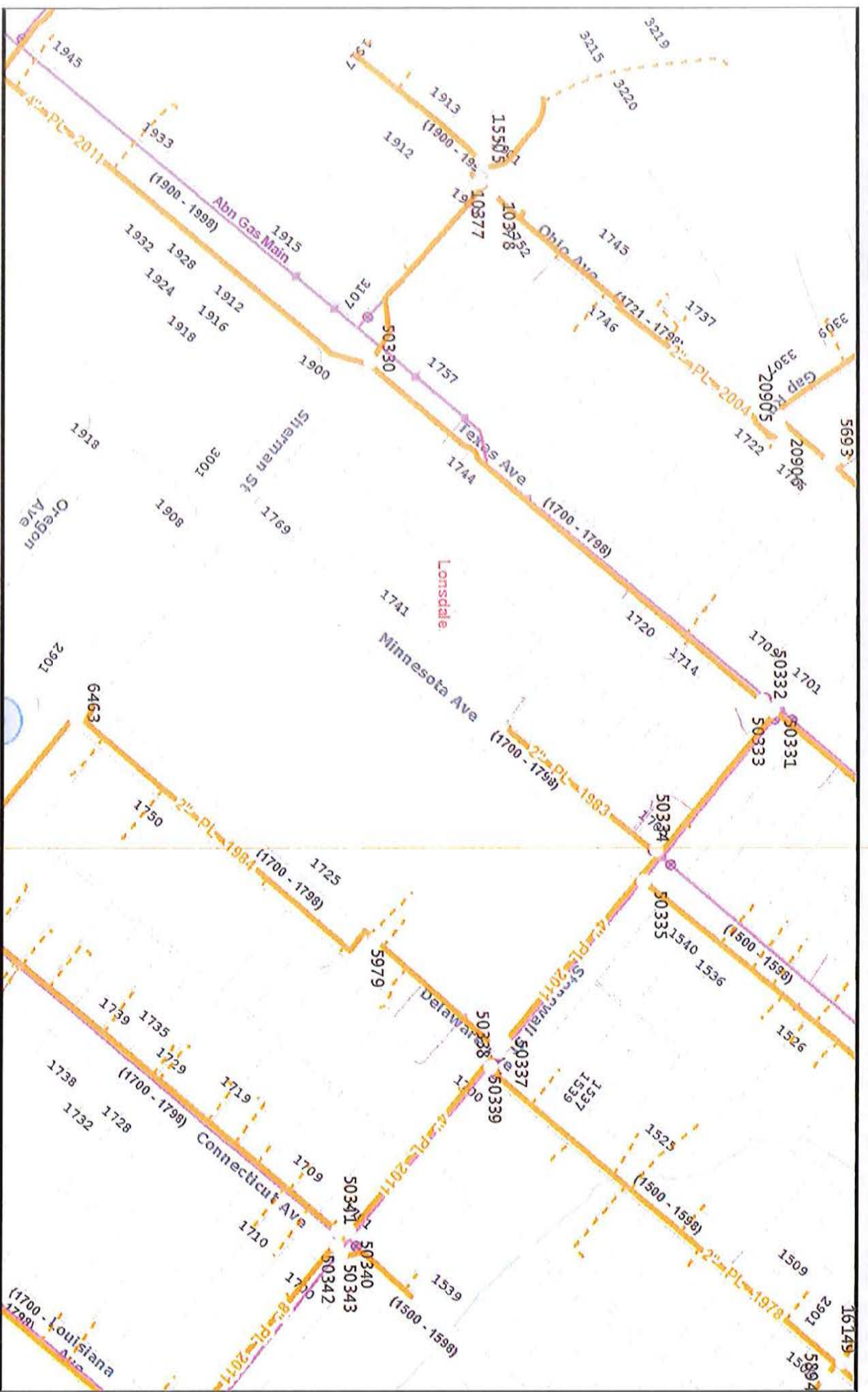
Knoxville Utilities Board



Printed: 11/30/2017 at 8:50:47 AM



KUB makes no representation or warranty as to the accuracy of this map and its information nor to its fitness for use. Any user of this map product accepts the same AS IS WITH ALL FAULTS, and assumes all responsibility for the use thereof, and further covenants and agrees to hold KUB harmless from any and all damage, loss, or liability arising from any use of this map product. All rights reserved.



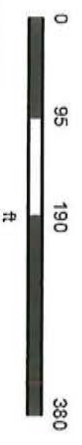
File No. 12-A-17-SC Minnesota Ave btwn Stonewall St and Sherman St (Gas)

City Block 19411 & 19412 CLT Map #18

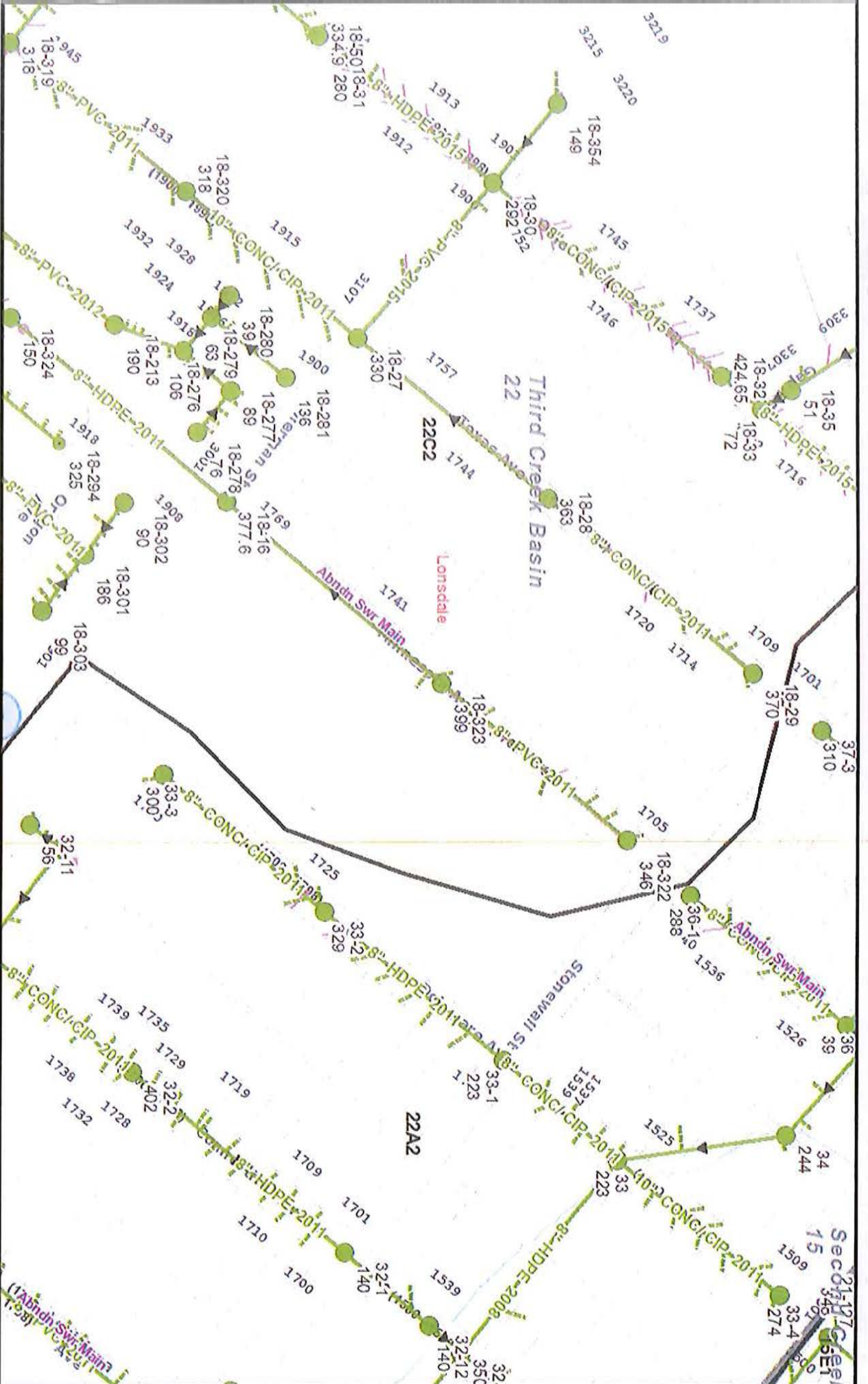
Knoxville Utilities Board



Printed: 11/30/2017 at 8:49:41 AM



KUB makes no representation or warranty as to the accuracy of this map and its information nor to its fitness for use. Any user of this map product accepts the same AS IS WITH ALL FAULTS, and assumes all responsibility for the use thereof, and further covenants and agrees to hold KUB harmless from any and all damage, loss, or liability arising from any use of this map product. All rights reserved.



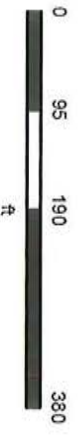
File No. 12-A-17-SC Minnesota Ave btwn Stonewall St and Sherman St (Sewer)

City Block 19411 & 19412 CLT Map #18

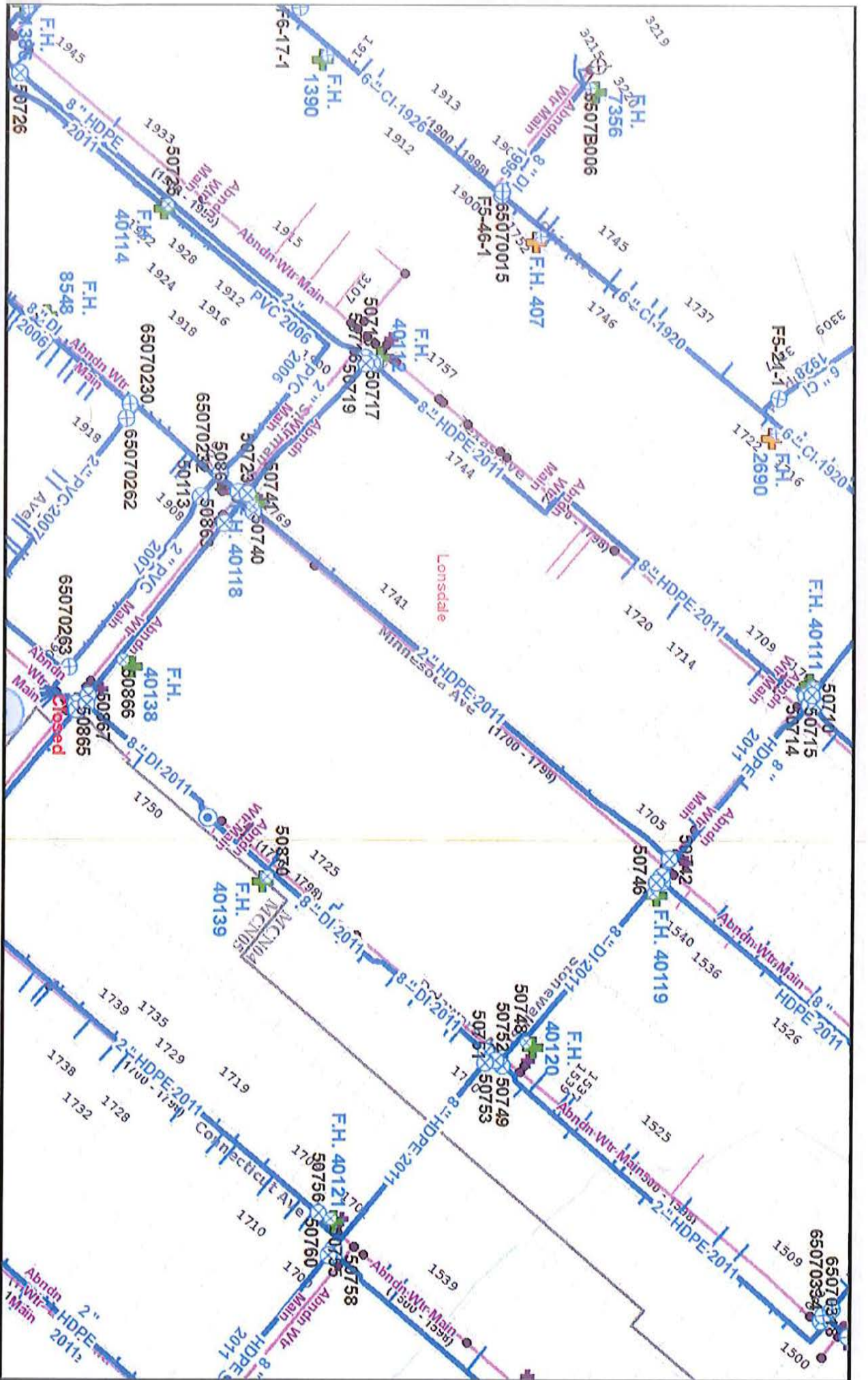
Knoxville Utilities Board



Printed: 11/30/2017 at 8:48:49 AM



KUB makes no representation or warranty as to the accuracy of his map and its information nor to its fitness for use. Any user of this map product accepts the same AS IS, WITH ALL FAULTS, and assumes all responsibility for the use thereof, and further covenants and agrees to hold KUB harmless from any and all damage, loss, or liability arising from any use of this map product. All rights reserved.



File No. 12-A-17-SC Minnesota Ave btwn Stonewall St and Sherman St (Water)

City Block 19411 & 19412 CLT Map #18

Knoxville Utilities Board



Printed: 11/30/2017 at 8:47:47 AM



KUB makes no representation or warranty as to the accuracy of this map and its information nor to its fitness for use. Any user of this map product accepts the same AS IS, WITH ALL FAULTS, and assumes all responsibility for the use thereof, and further covenants and agrees to hold KUB harmless from any and all damage, loss, or liability arising from any use of this map product. All rights reserved.