

Work Order #

0390812Ar10

Sheet 12 of 15

Client

MAIN EVENT

Address

9049 KINGSTON PIKE  
KNOXVILLE, TN

Account Rep. M. WILSON/MW

Designer JP

Date 7.25.16

Approval / Date

Client	
Sales	
Estimating	
Art	
Engineering	
Landlord	

Revision / Date

R1	CR 7/28/16
R2	KMc 7/28/16
R3	RFF 08.09.16 update elevents
R4	ES 8/11 pg1 soft chart
R5	JP 8/11.16/revise A,B,C & K
R6	KMc 9/20/16: rev sq ft
R7	RMS 10-11-16 Add options
R8	RFF 10.19.16 update
R9	RG 11/29/16: update
R10	ES 1/18/17 monmentoppers delKopt1,delLopt1&3

**Chandler Signs**  
Brand Image Begins Here™

chandler signs.com

National Headquarters  
3201 Maple Way  
Dallas, TX 75235  
214-902-2000 Fax: 214-902-2044

San Antonio  
17310 San Pedro Ave. Ste. #200  
San Antonio, TX 78257  
210-349-2804 Fax: 210-349-8724

West Coast  
3220 Executive Ridge Dr., Suite 250  
1016 CA 92091  
760-734-1708 Fax: 760-734-3752

Northeast US  
955 Baxter Avenue, Suite 200  
Louisville, KY 40204  
502-479-3079 Fax: 502-412-0013

Florida  
2564 Sand Hill Point Circle  
Davensport, FL 32837  
888-420-1100 Fax: 888-424-1160

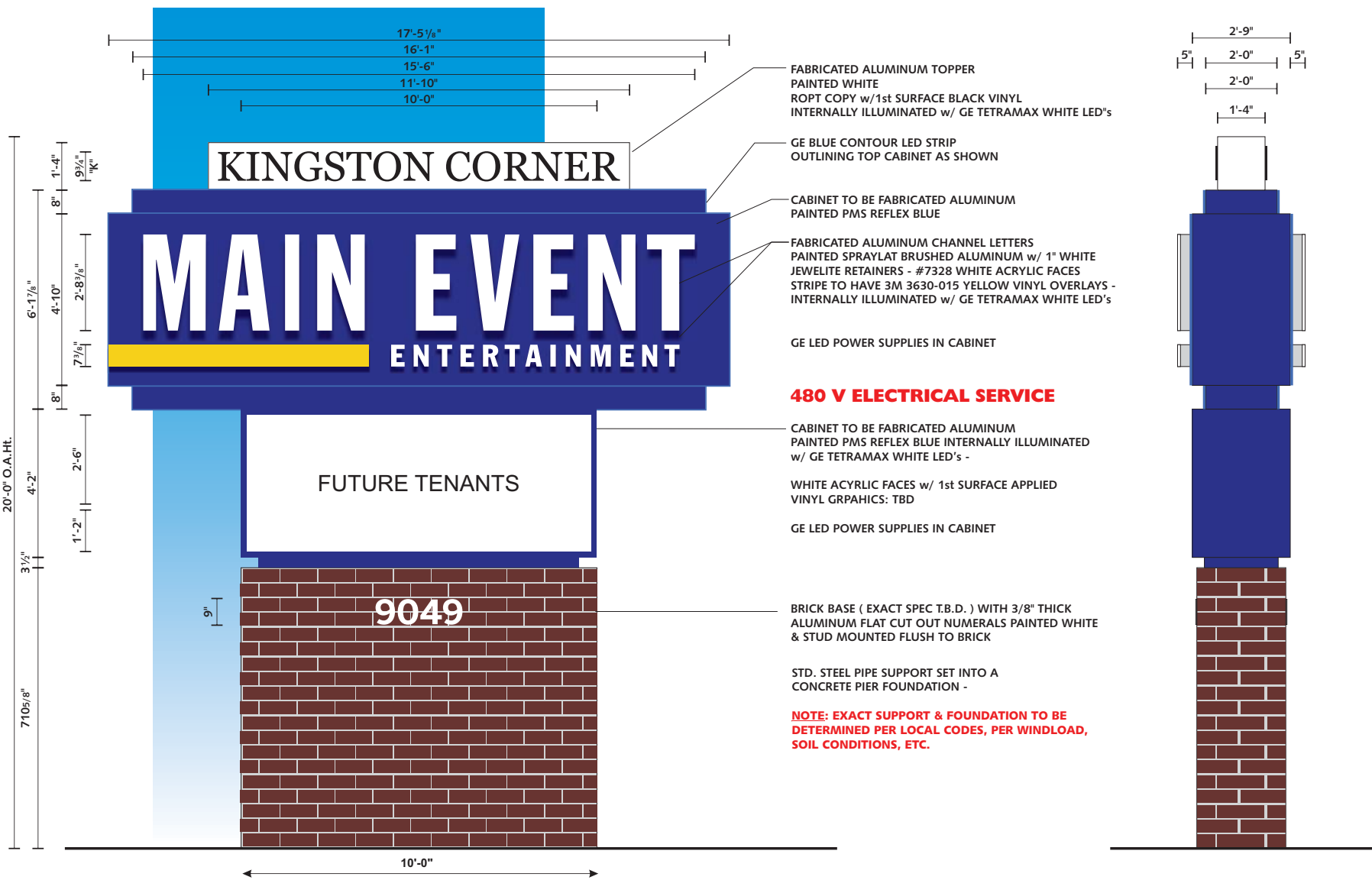
Georgia  
37 Wabash Point Court  
Dawsonville, GA 30534  
678-725-8852 Fax: 210-349-8724

South Texas  
P.O. Box 125, 205 Doral Drive  
Porter, TX 75074  
361-543-5999 Fax: 361-643-6533

This drawing is the property of Chandler Signs, L.P., L.L.P.  
All rights to its use for reproduction are reserved by Chandler Signs, L.P., L.L.P.

**FINAL ELECTRICAL CONNECTION BY CUSTOMER**

THIS SIGN IS INTENDED TO BE INSTALLED IN ACCORDANCE WITH ARTICLE 600 OF THE NATIONAL ELECTRICAL CODE AND/OR OTHER APPLICABLE LOCAL CODES. THIS INCLUDES PROPER GROUNDING AND BONDING OF SIGN SIGN WILL BEAR ALL RISKS.



FABRICATED ALUMINUM TOPPER  
PAINTED WHITE  
ROPT COPY w/1st SURFACE BLACK VINYL  
INTERNALLY ILLUMINATED w/ GE TETRAMAX WHITE LED'S

GE BLUE CONTOUR LED STRIP  
OUTLINING TOP CABINET AS SHOWN

CABINET TO BE FABRICATED ALUMINUM  
PAINTED PMS REFLEX BLUE

FABRICATED ALUMINUM CHANNEL LETTERS  
PAINTED SPRAYLAT BRUSHED ALUMINUM w/ 1" WHITE  
JEWELITE RETAINERS - #7328 WHITE ACRYLIC FACES  
STRIPE TO HAVE 3M 3630-015 YELLOW VINYL OVERLAYS -  
INTERNALLY ILLUMINATED w/ GE TETRAMAX WHITE LED'S

GE LED POWER SUPPLIES IN CABINET

**480 V ELECTRICAL SERVICE**

CABINET TO BE FABRICATED ALUMINUM  
PAINTED PMS REFLEX BLUE INTERNALLY ILLUMINATED  
w/ GE TETRAMAX WHITE LED'S -

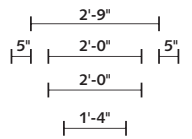
WHITE ACRYLIC FACES w/ 1st SURFACE APPLIED  
VINYL GRAPHICS: TBD

GE LED POWER SUPPLIES IN CABINET

BRICK BASE ( EXACT SPEC T.B.D. ) WITH 3/8" THICK  
ALUMINUM FLAT CUT OUT NUMERALS PAINTED WHITE  
& STUD MOUNTED FLUSH TO BRICK

STD. STEEL PIPE SUPPORT SET INTO A  
CONCRETE PIER FOUNDATION -

**NOTE: EXACT SUPPORT & FOUNDATION TO BE  
DETERMINED PER LOCAL CODES, PER WINDLOAD,  
SOIL CONDITIONS, ETC.**



**END VIEW**

**K D/F MONUMENT ELEVATION** SCALE: 3/8"=1'-0"

MFG. & INSTALL ONE (1) DOUBLE FACE MONUMENT SIGN  
**TOTAL SIGN AREA SQ. FT. = 164**  
**MAIN EVENT CABINET 107 SQ FT**  
**SECONDARY TENANTS 57.0 SQ FT**

2-J-17-UR  
Revised: 2/8/2017



FABRICATED ALUMINUM TOPPER  
PAINTED PMS WHITE  
ROPT COPY w/ 1st SURFACE BLACK VINYL  
INTERNALLY ILLUMINATED w/ GE TETRAMAX WHITE LED'S

GE BLUE CONTOUR LED STRIP  
OUTLINING CABINET AS SHOWN

CABINET TO BE FABRICATED ALUMINUM  
PAINTED PMS REFLEX BLUE w/ ROUT-OUT FACES

3/4" THICK CLEAR ACRYLIC (1/2" PROJECTION)  
PUSH-THRU GRAPHICS COPY TO HAVE 3M 3630-20  
WHITE VINYL OVERLAYS STRIPE TO HAVE 3M 3630-015  
YELLOW VINYL OVERLAYS -2nd SURFACE DIFFUSER

INTERNALLY ILLUMINATED w/ GE TETRAMAX POWERSTRIP  
WHITE LED'S

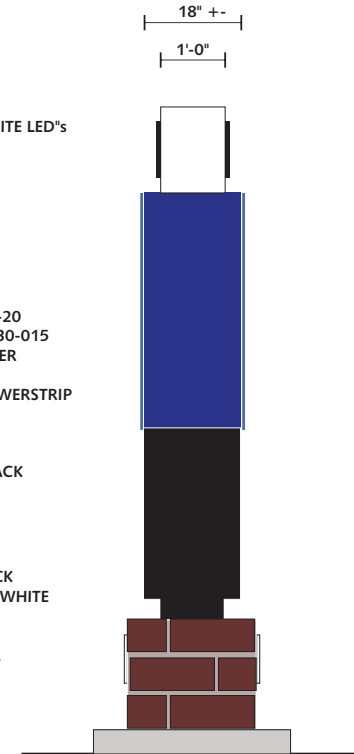
FABRICATED ALUMINUM CABINET - PAINTED BLACK  
FUTURE TENANT GRAPHICS TO BE DETERMINED

GE LED POWER SUPPLIES IN CABINET

BRICK BASE ( EXACT SPEC T.B.D. ) WITH 3/8" THICK  
ALUMINUM FLAT CUT OUT NUMERALS PAINTED WHITE  
& STUD MOUNTED FLUSH TO BRICK

**NOTE: 10' SETBACK REQUIRED BEHIND R.O.W.  
OR 15' FROM EDGE OF PAVEMENT**

**480 V ELECTRICAL SERVICE**



**END VIEW**

**D/F MONUMENT SIGN**

SCALE: 1/2"=1'-0"

MFG. & INSTALL ONE (1) DOUBLE FACE MONUMENT SIGN

**TOTAL SIGN AREA SQ. FT. = 100**

**MAIN EVENT CABINET 65 SQ FT**

**SECONDARY TENANTS 35 SQ FT**

2-J-17-UR

Revised: 2/8/2017

Work Order #

0390812Ar10

Sheet 13 of 15

Client

MAIN EVENT

Address

9049 KINGSTON PIKE  
KNOXVILLE, TN

Account Rep. M. WILSON/MW

Designer JP

Date 7.25.16

Approval / Date

Client	
Sales	
Estimating	
Art	
Engineering	
Landlord	

Revision / Date

R1 CR 7/28/16
R2 KMc 7/28/16
R3 RFF 08.09.16 update elevnts
R4 ES 8/11 pg1 sqft chart
R5 JP/8.17.16/revise A,B,C & K
R6 KMc 9/20/16: rev sq ft
R7 RMS 10-11-16 Add options
R8 RFF 10.19.16 update
R9 RG 11/29/16: update
R10 ES 1/18/17 monmentToppr
delKopt1,dellOpt1&3



chandler signs.com	
National Headquarters	2001 Manor Way Dallas, TX 75225 214-662-2000 Fax 214-662-2044
San Antonio	17319 San Pedro Ave. Ste. #200 San Antonio, TX 78232 210-349-3804 Fax 210-349-8724
West Coast	2220 Executive Ridge Dr., Suite 200 Irvine, CA 92614 714-261-1708 Fax 714-261-3752
Northeast US	865 Boulder Avenue, Suite 200 Locustville, OH 43034 614-479-3875 Fax 614-479-4013
Florida	2584 Sand Hill Point Circle Eustachius, FL 32837 850-450-1100 Fax 850-424-1160
Georgia	27 Waterford Park Court Marietta, GA 30064 678-725-8832 Fax 210-349-8724
South Texas	P.O. Box 125, 200 Dorsal Drive Portland, TX 75214 951-563-5599 Fax 361-643-6533

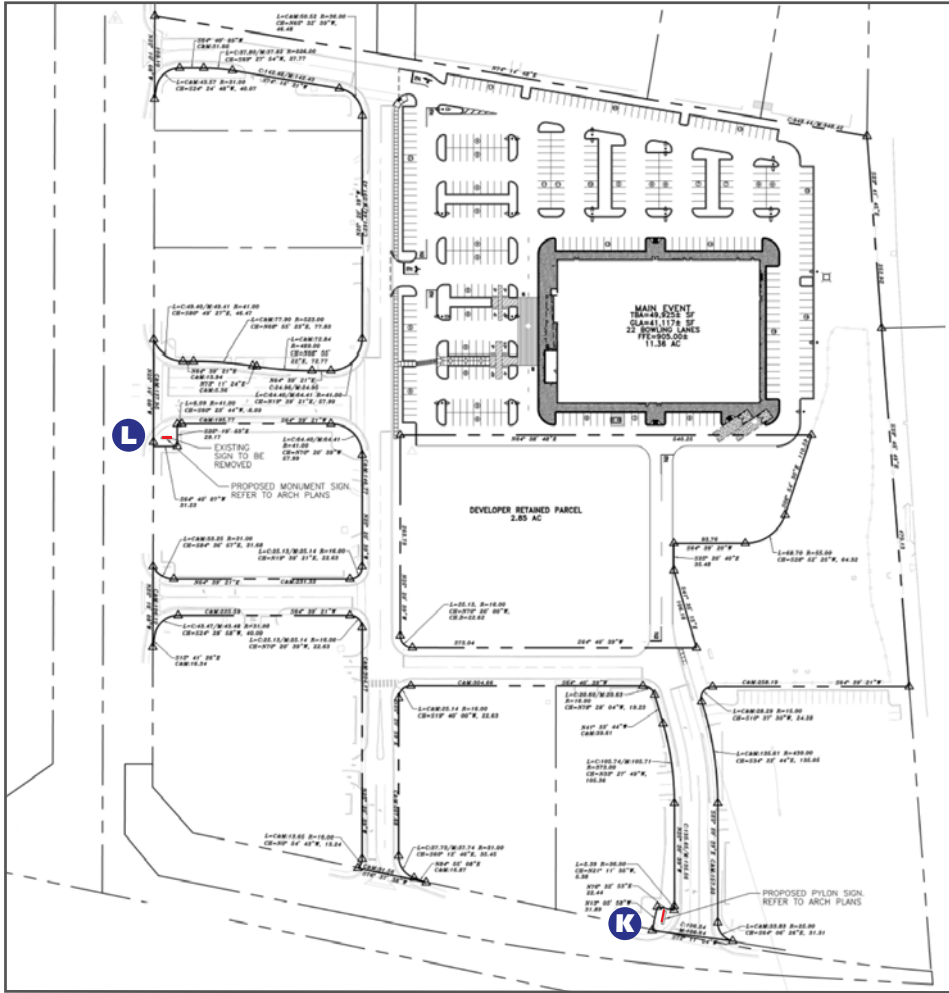
This drawing is the property of  
Chandler Signs, L.P., L.L.P.  
All rights to its use for reproduction are  
reserved by Chandler Signs, L.P., L.L.P.

**FINAL ELECTRICAL CONNECTION BY CUSTOMER**

THIS SIGN IS INTENDED TO BE INSTALLED IN ACCORDANCE WITH ARTICLE 600 OF THE NATIONAL ELECTRICAL CODE AND/OR OTHER APPLICABLE LOCAL CODES. THIS INCLUDES PROPER GROUNDING AND WIRING OF SIGN. SIGN WILL BEAR UL LABELS.

Client	
Sales	
Estimating	
Art	
Engineering	
Landlord	

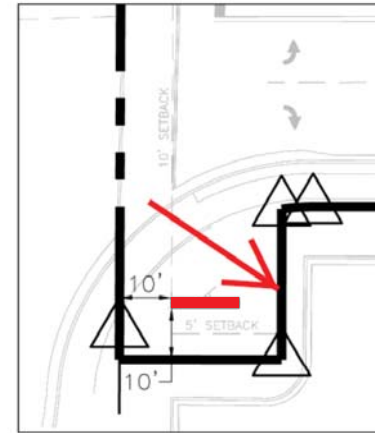
R1 CR 7/28/16
R2 KMc 7/28/16
R3 RFF 08.09.16 update elevnts
R4 ES 8/11 pg1 sqft chart
R5 JP 8.17.16/revise A,B,C & K
R6 KMc 9/20/16: rev sq ft
R7 RMS 10-11-16 Add options
R8 RFF 10.19.16 update
R9 RG 11/29/16: update
R10 ES 1/18/17 monmtToppers delKopt1,delLopt1&3

**SITE PLAN - SHOWING MONUMENT LOCATIONS**

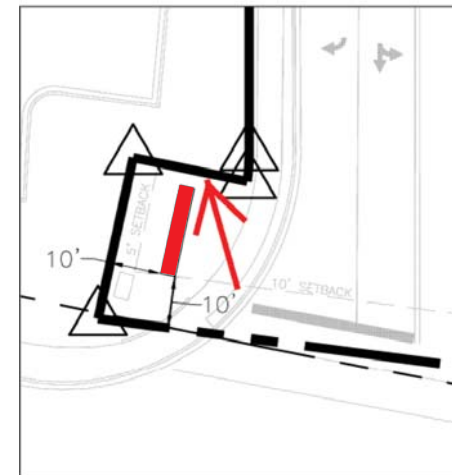
N.T.S.

NOTE: 10 SETBACK FROM R.O.W.



**L MONUMENT - CLOSE VIEW**

N.T.S.



**K MONUMENT - CLOSE VIEW**

N.T.S.

2-J-17-UR

Revised: 2/8/2017