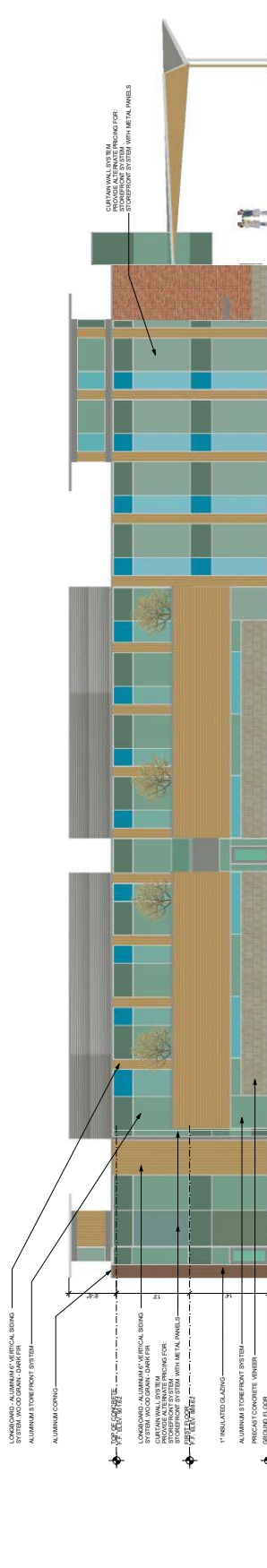
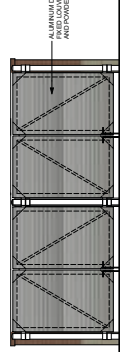


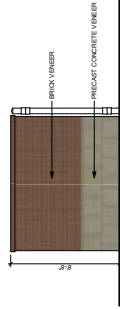
**1** SOUTH ELEVATION  
 SCALE: 1/8" = 1'-0"



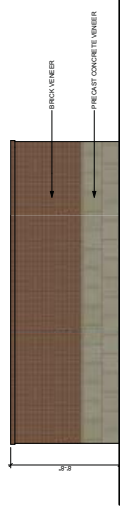
**2** NORTH ELEVATION  
 SCALE: 1/8" = 1'-0"



**3** DUMPSTER FRONT ELEVATION  
 SCALE: 1/4" = 1'-0"



**4** DUMPSTER SIDE ELEVATION  
 SCALE: 1/4" = 1'-0"



**5** DUMPSTER REAR ELEVATION  
 SCALE: 1/4" = 1'-0"

LONGBOARD ALUMINUM CERAMIC SIDING SYSTEM WOOD GRAIN DARK FIR  
 ALUMINUM STOREFRONT SYSTEM  
 ALUMINUM CORING  
 TOP OF CONCRETE  
 LONGBOARD ALUMINUM CERAMIC SIDING SYSTEM WOOD GRAIN DARK FIR  
 CURTAIN WALL SYSTEM STOREFRONT SYSTEM WITH METAL PANELS  
 1" INSULATED GLAZING  
 PRECAST CONCRETE VENEER  
 ALUMINUM STOREFRONT SYSTEM

CURTAIN WALL SYSTEM STOREFRONT SYSTEM WITH METAL PANELS  
 LONGBOARD ALUMINUM CERAMIC SIDING SYSTEM WOOD GRAIN DARK FIR  
 1" INSULATED GLAZING  
 ALUMINUM STOREFRONT SYSTEM  
 PRECAST CONCRETE VENEER

CURTAIN WALL SYSTEM STOREFRONT SYSTEM WITH METAL PANELS  
 LONGBOARD ALUMINUM CERAMIC SIDING SYSTEM WOOD GRAIN DARK FIR  
 ALUMINUM STOREFRONT SYSTEM  
 ALUMINUM CORING  
 TOP OF CONCRETE  
 LONGBOARD ALUMINUM CERAMIC SIDING SYSTEM WOOD GRAIN DARK FIR  
 CURTAIN WALL SYSTEM STOREFRONT SYSTEM WITH METAL PANELS  
 1" INSULATED GLAZING  
 PRECAST CONCRETE VENEER  
 ALUMINUM STOREFRONT SYSTEM

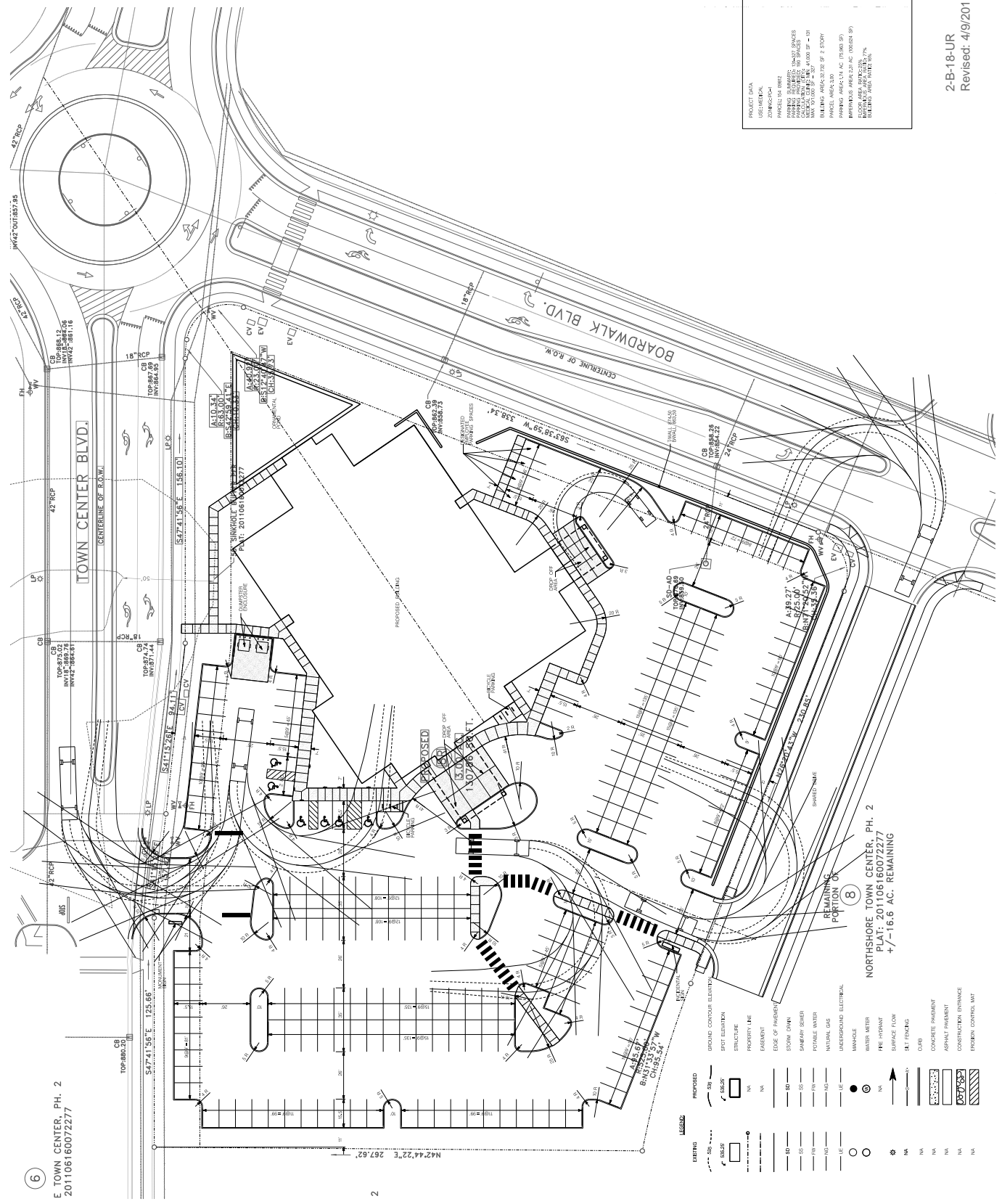
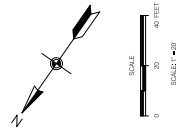
ALUMINUM CORING  
 TOP OF CONCRETE  
 LONGBOARD ALUMINUM CERAMIC SIDING SYSTEM WOOD GRAIN DARK FIR  
 CURTAIN WALL SYSTEM STOREFRONT SYSTEM WITH METAL PANELS  
 1" INSULATED GLAZING  
 ALUMINUM STOREFRONT SYSTEM  
 PRECAST CONCRETE VENEER

ALUMINUM STOREFRONT SYSTEM WITH METAL PANELS AND POWDER  
 BRICK VENEER  
 PRECAST CONCRETE VENEER

BRICK VENEER  
 PRECAST CONCRETE VENEER

BRICK VENEER  
 PRECAST CONCRETE VENEER

2-B-18-UR  
 Revised: 4/9/2018



PROJECT DATA

PROJECT NO.	17009
PROJECT NAME	GI FOR KIDS
PROJECT LOCATION	1000 BOARDWALK BLVD, KNOXVILLE, TN 37912
CLIENT	MIAMI CENTER FOR KIDNEY CARE
DESIGNER	GEORGE ARMOUR EWART ARCHITECT
DATE	06 APRIL 2018
PROJECT MGR.	SHA
PROJECT NO.	17009
PROJECT NAME	GI FOR KIDS
PROJECT LOCATION	1000 BOARDWALK BLVD, KNOXVILLE, TN 37912
CLIENT	MIAMI CENTER FOR KIDNEY CARE
DESIGNER	GEORGE ARMOUR EWART ARCHITECT
DATE	06 APRIL 2018
PROJECT MGR.	SHA

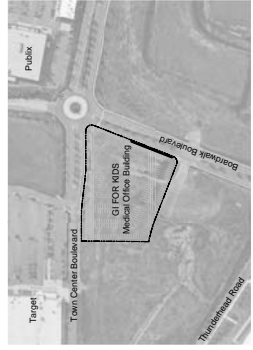
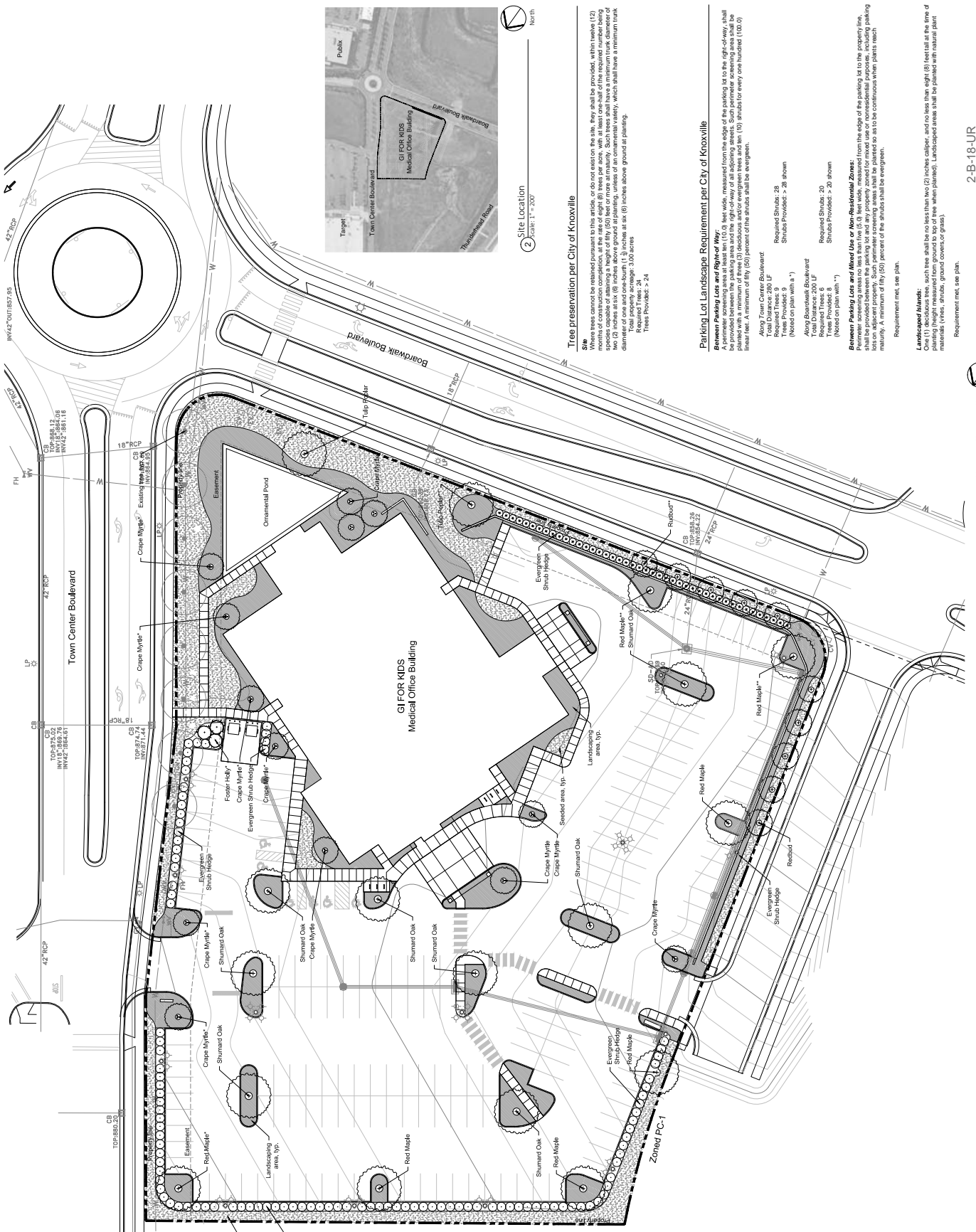
**LEGEND**

EXISTING	PROPOSED
GROUND CONTOUR ELEVATION	GROUND CONTOUR ELEVATION
SPOT ELEVATION	SPOT ELEVATION
STRUCTURE	STRUCTURE
PROPERTY LINE	PROPERTY LINE
EDGE OF PAVEMENT	EDGE OF PAVEMENT
SEWER CORNA	SEWER CORNA
SHARPS SINKER	SHARPS SINKER
POSSIBLE WATER	POSSIBLE WATER
NATURAL GAS	NATURAL GAS
UNDERGROUND ELECTRICAL	UNDERGROUND ELECTRICAL
MANHOLE	MANHOLE
WATER METERS	WATER METERS
FIRE HYDRANT	FIRE HYDRANT
SURFACE FLOW	SURFACE FLOW
SOIL FINISH	SOIL FINISH
CONCRETE PAVEMENT	CONCRETE PAVEMENT
ASPHALT PAVEMENT	ASPHALT PAVEMENT
CONSTRUCTION ENTRANCE	CONSTRUCTION ENTRANCE
EMERGENCY CONTROL MAT	EMERGENCY CONTROL MAT

**NORTHSHORE TOWN CENTER, PH. 2**  
 PLAT: 201106160072277  
 +/- 16.6 AC. REMAINING

**6**  
 E TOWN CENTER, PH. 2  
 201106160072277





2 Site Location  
 Scale: 1" = 200'

**Tree preservation per City of Knoxville**

**Site** Trees cannot be removed for access to utility poles, or for access to the utility lines, they shall be provided, within twelve (12) months of construction completion, at the rate of eight (8) trees per acre, with at least one half of the required number being species capable of attaining a height of fifty (50) feet or more at maturity. Such trees shall have a minimum trunk diameter of two (2) inch calipers (DBH) measured at a point free of irregularities, such as buttresses or other irregularities, which shall have a minimum trunk diameter of one inch (1") in calipers at six (6) inches above ground at planting.

Total property acreage: 3.00 acres  
 Required Trees: 24  
 Trees provided: 24

**Parking Lot Landscape Requirement per City of Knoxville**

**Required Parking Lots are 100% of Area**  
 A perimeter screening area at least ten (10) feet wide, measured from the edge of the parking lot to the right-of-way, shall be provided between the parking area and the right-of-way of all adjoining streets. Such perimeter screening area shall be composed of trees and shrubs. The screening area shall be planted with a minimum of ten (10) shrubs for every one hundred (100.0) linear feet. A minimum of fifty (50) percent of the shrubs shall be evergreen.

Along Town Center Boulevard  
 Total Distance: 260 LF  
 Required Trees: 9  
 Required Shrubs: 28  
 (Noted on plan with a \*)

Along Boardwalk Boulevard  
 Total Distance: 200 LF  
 Required Trees: 6  
 Required Shrubs: 20  
 (Noted on plan with \*)

**Perimeter Screening Area and Wind Use or Non-Residential Zones:**  
 The perimeter screening area shall be planted with trees and shrubs that are appropriate for the use of the property. The screening area shall be planted with a minimum of ten (10) shrubs for every one hundred (100.0) linear feet. A minimum of fifty (50) percent of the shrubs shall be evergreen.

Requirement met, see plan.

**Landscaped Islands:**

One (1) deciduous tree, such tree shall be no less than two (2) inches caliper, and no less than eight (8) feet tall at the time of planting. One (1) evergreen shrub, such shrub shall be no less than two (2) inches caliper, and no less than eight (8) feet tall at the time of planting. (Trees, shrubs, ground covers, grass).

Requirement met, see plan.

