



Knoxville Utilities Board

11-A-14-SC cor KUB

June 4, 2018

Mr. Mike Brusseau
Knoxville-Knox County
Metropolitan Planning Commission
Suite 403, City-County Building
Knoxville, Tennessee 37902

Dear Mr. Brusseau:

**Re: Right-of-Way Closure Request 11-A-14-SC
Block No. 10143 & 10146
CLT No. 94**

We have reviewed our records and find that we have existing utility facilities located within the subject right-of-way. The approximate location of these facilities is indicated on the enclosed prints. However, KUB does not release and hereby retains all easements and rights for existing utility facilities, whether or not shown on these prints.

Should this right-of-way be closed, KUB will require the following permanent easement for its utility facility.

Electric – 10 feet on each side of the centerline of the electric line, 20 feet total width
Gas – 7.5 feet on each side of the centerline of the gas line, 15 feet total width
Sewer – 7.5 feet on each side of the centerline of the sewer line, 15 feet total width
Water – 7.5 feet on each side of the centerline of the water line, 15 feet total width

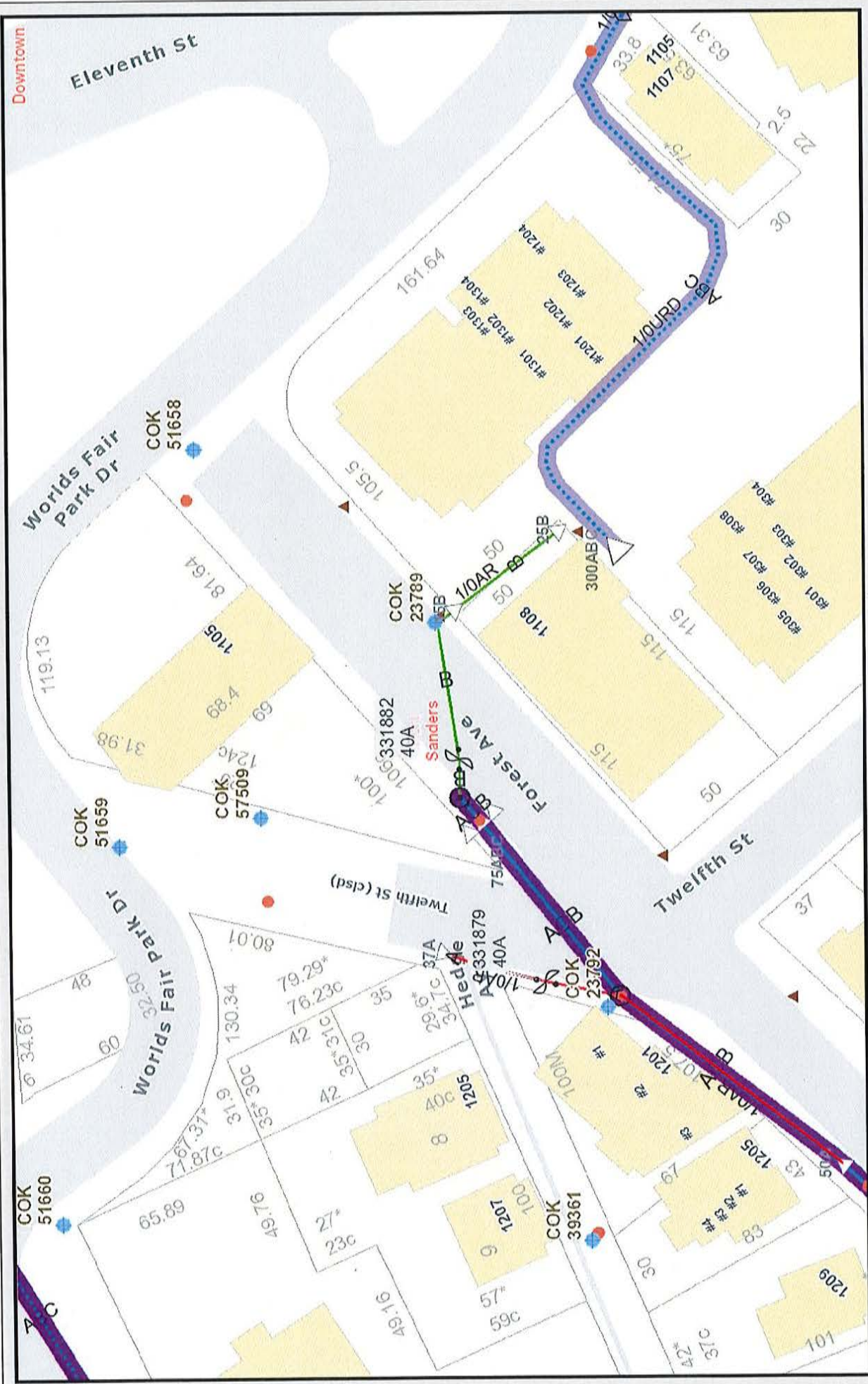
If you have any questions regarding this matter, please call me at (865) 558-2483.

Sincerely,

A handwritten signature in black ink, appearing to read 'C. Wiberley'.

Christian Wiberley
Engineering

CGW



Printed: 5/31/2018 at 3:10:48 PM



11-A-14-SC Forest Ave (Electric)

CLT Map 94 City Block 10143 & 10146 Parcel #7

Knoxville Utilities Board

KUB makes no representation or warranty as to the accuracy of this map and its information nor to its fitness for use. Any user of this map product accepts the same AS IS, WITH ALL FAULTS, and assumes all responsibility for the use thereof, and further covenants and agrees to hold KUB harmless from any and all damage, loss, or liability arising from any use of this map product. All rights reserved.

Downtown

Eleventh St

Worlds Fair Park Dr

14136

81.64

1105

120*

120*

120*

120*

120*

120*

120*

120*

120*

120*

120*

120*

HILLS KNOXVILLE LLC

FOREST

FOREST

FOREST

105.5

106c

106c

106c

106c

106c

106c

106c

106c

106c

106c

106c

106c

161.64

105

105

105

105

105

105

105

105

105

105

105

105

108

115

115

115

115

115

115

115

115

115

115

115

115

115

115

115

115

115

115

115

115

115

115

115

115

115

105

105

105

105

105

105

105

105

105

105

105

105

105

105

105

105

105

105

105

105

105

105

105

105

105

105

105

105

105

105

105

105

105

105

105

105

105

105

105

105

105

105

105

105

105

105

105

105

105

105

105

105

105

105

105

105

105

105

105

105

105

105

105

105

105

105

105

105

105

105

105

105

105

105

105

105

105

105

105

105

105

105

105

105

105

105

105

105

105

105

105

Printed: 5/31/2018 at 3:09:16 PM

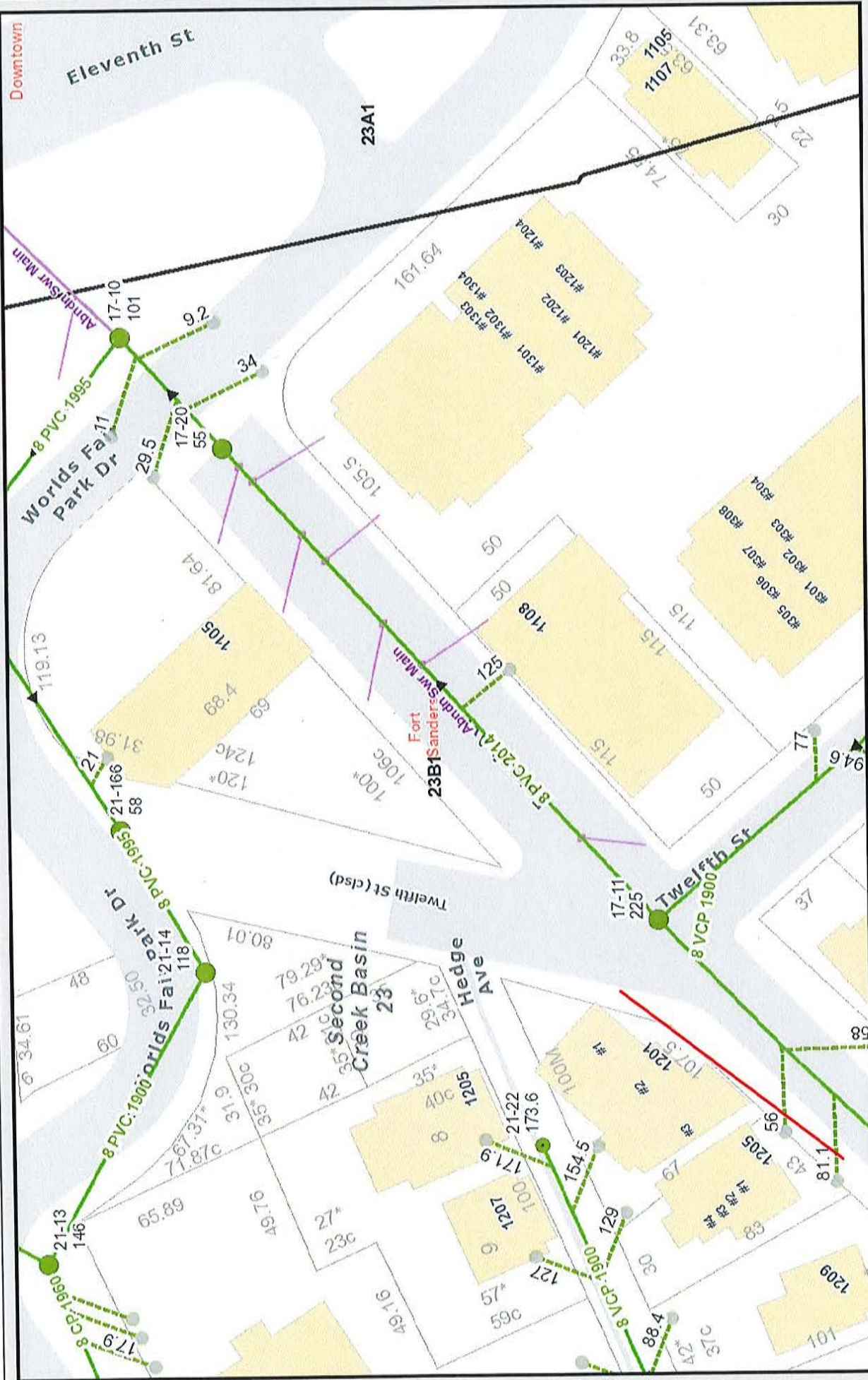


11-A-14-SC Forest Ave (Gas)

CLT Map 94 City Block 10143 & 10146 Parcel #7

Knoxville Utilities Board

KUB makes no representation or warranty as to the accuracy of this map and its information nor to its fitness for use. Any user of this map product accepts the same AS IS ,WITH ALL FAULTS, and assumes all responsibility for the use thereof, and further covenants and agrees to hold KUB harmless from any and all damage, loss, or liability arising from any use of this map product. All rights reserved.



Printed: 5/31/2018 at 3:07:57 PM

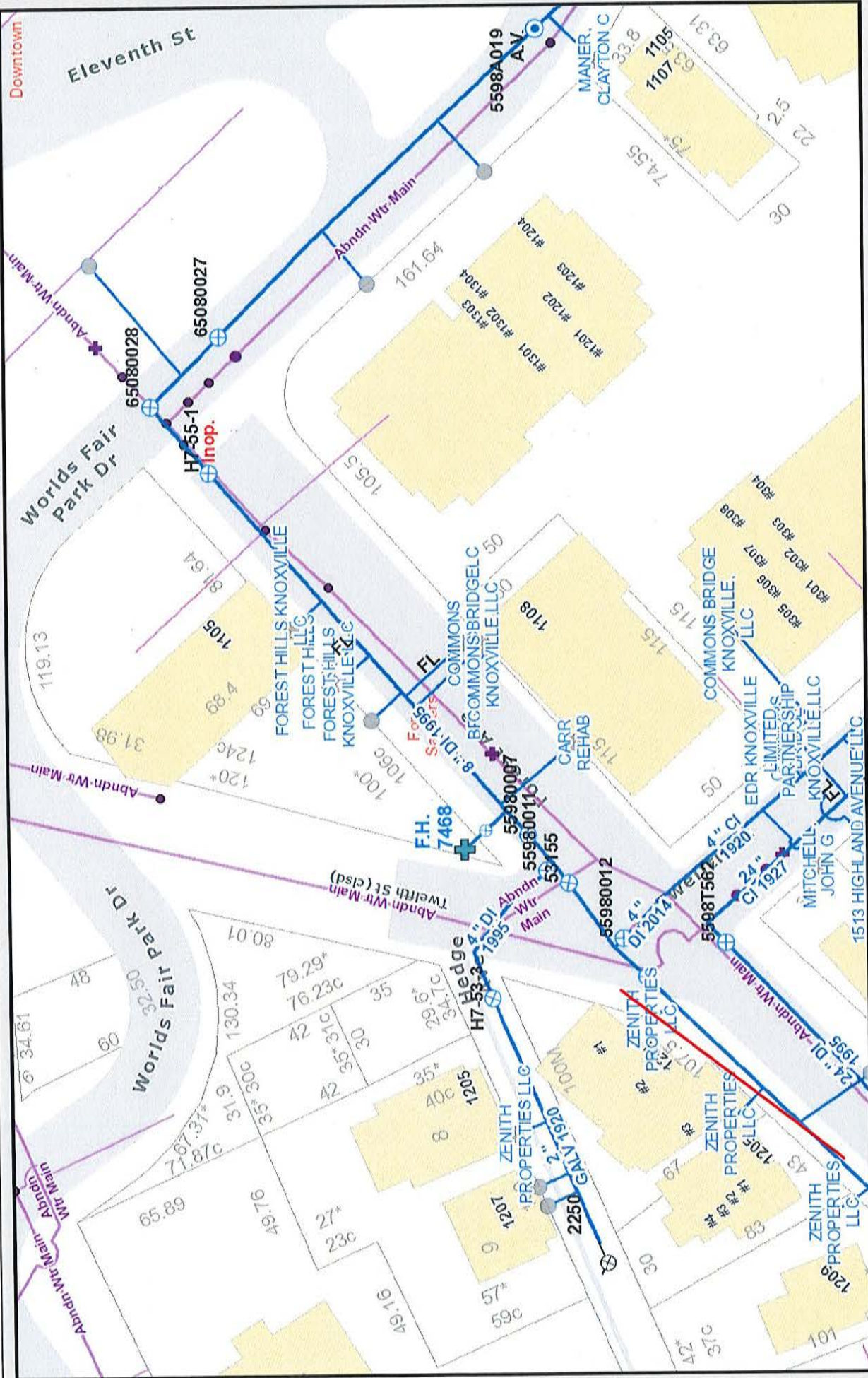
0 20 40 80
ft

11-A-14-SC Forest Ave (Sewer)

CLT Map 94 City Block 10143 & 10146 Parcel #7

Knoxville Utilities Board

KUB makes no representation or warranty as to the accuracy of this map and its information nor to its fitness for use. Any user of this map product accepts the same AS IS, WITH ALL FAULTS, and assumes all responsibility for the use thereof, and further covenants and agrees to hold KUB harmless from any and all damage, loss, or liability arising from any use of this map product. All rights reserved.



Printed: 5/31/2018 at 3:08:45 PM

11-A-14-SC Forest Ave (Water)

CLT Map 94 City Block 10143 & 10146 Parcel #7

Knoxville Utilities Board

KUB makes no representation or warranty as to the accuracy of this map and its information nor to its fitness for use. Any user of this map product accepts the same AS IS, WITH ALL FAULTS, and assumes all responsibility for the use thereof, and further covenants and agrees to hold KUB harmless from any and all damage, loss, or liability arising from any use of this map product. All rights reserved.



Knoxville Utilities Board

11-A-14-SC cor KUB

June 4, 2018

Mr. Mike Brusseau
Knoxville-Knox County
Metropolitan Planning Commission
Suite 403, City-County Building
Knoxville, Tennessee 37902

Dear Mr. Brusseau:

**Re: Right-of-Way Closure Request 11-A-14-SC
Block No. 10143 & 10146
CLT No. 94**

We have reviewed our records and find that we have existing utility facilities located within the subject right-of-way. The approximate location of these facilities is indicated on the enclosed prints. However, KUB does not release and hereby retains all easements and rights for existing utility facilities, whether or not shown on these prints.

Should this right-of-way be closed, KUB will require the following permanent easement for its utility facility.

Electric – 10 feet on each side of the centerline of the electric line, 20 feet total width
Gas – 7.5 feet on each side of the centerline of the gas line, 15 feet total width
Sewer – 7.5 feet on each side of the centerline of the sewer line, 15 feet total width
Water – 7.5 feet on each side of the centerline of the water line, 15 feet total width

If you have any questions regarding this matter, please call me at (865) 558-2483.

Sincerely,

A handwritten signature in black ink, appearing to read 'C. Wiberley'.

Christian Wiberley
Engineering

CGW

Downtown

Eleventh St

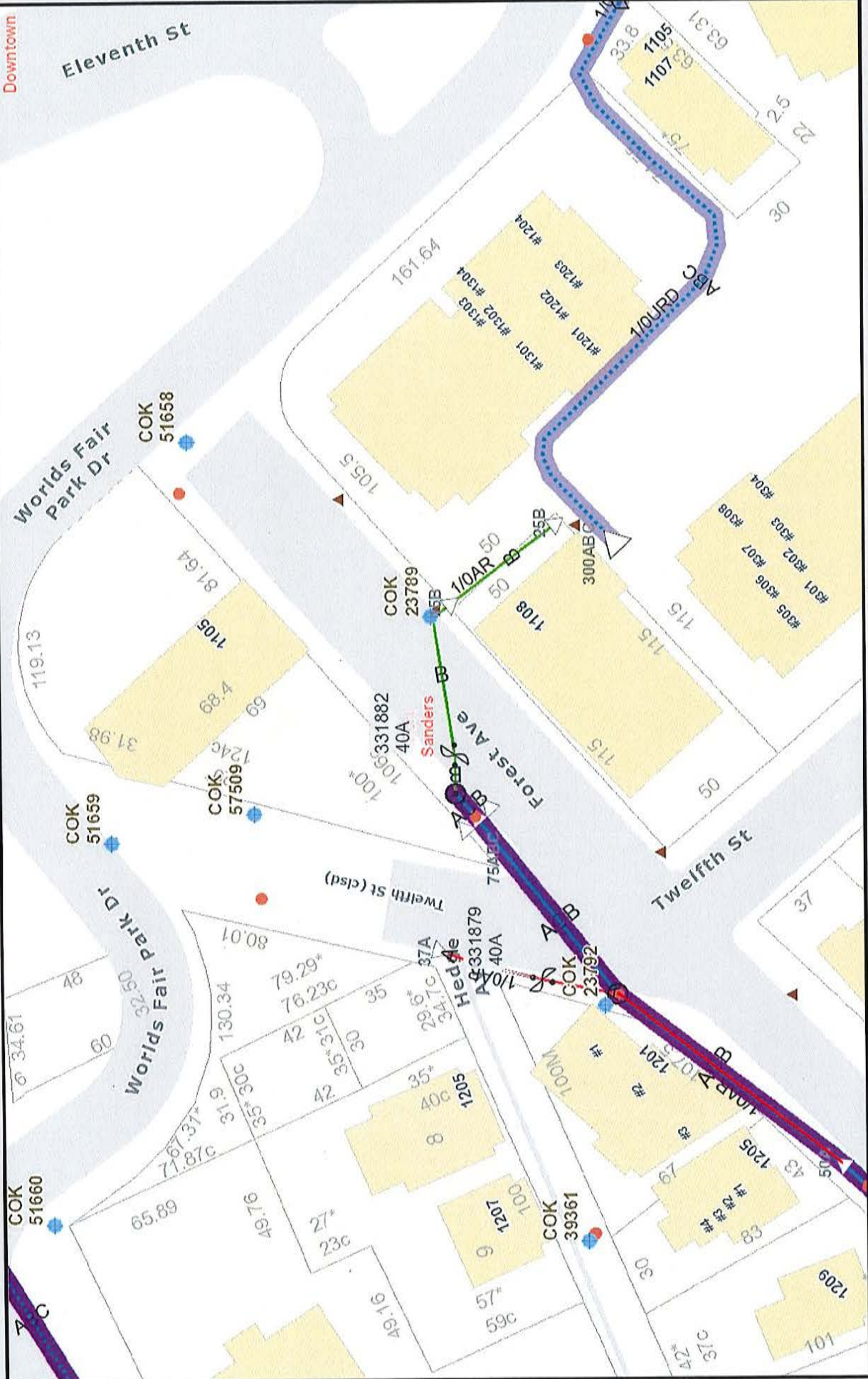
Worlds Fair Park Dr

Worlds Fair Park Dr

Twelfth St (clsd)

Forest Ave

Twelfth St



Printed: 5/31/2018 at 3:10:48 PM

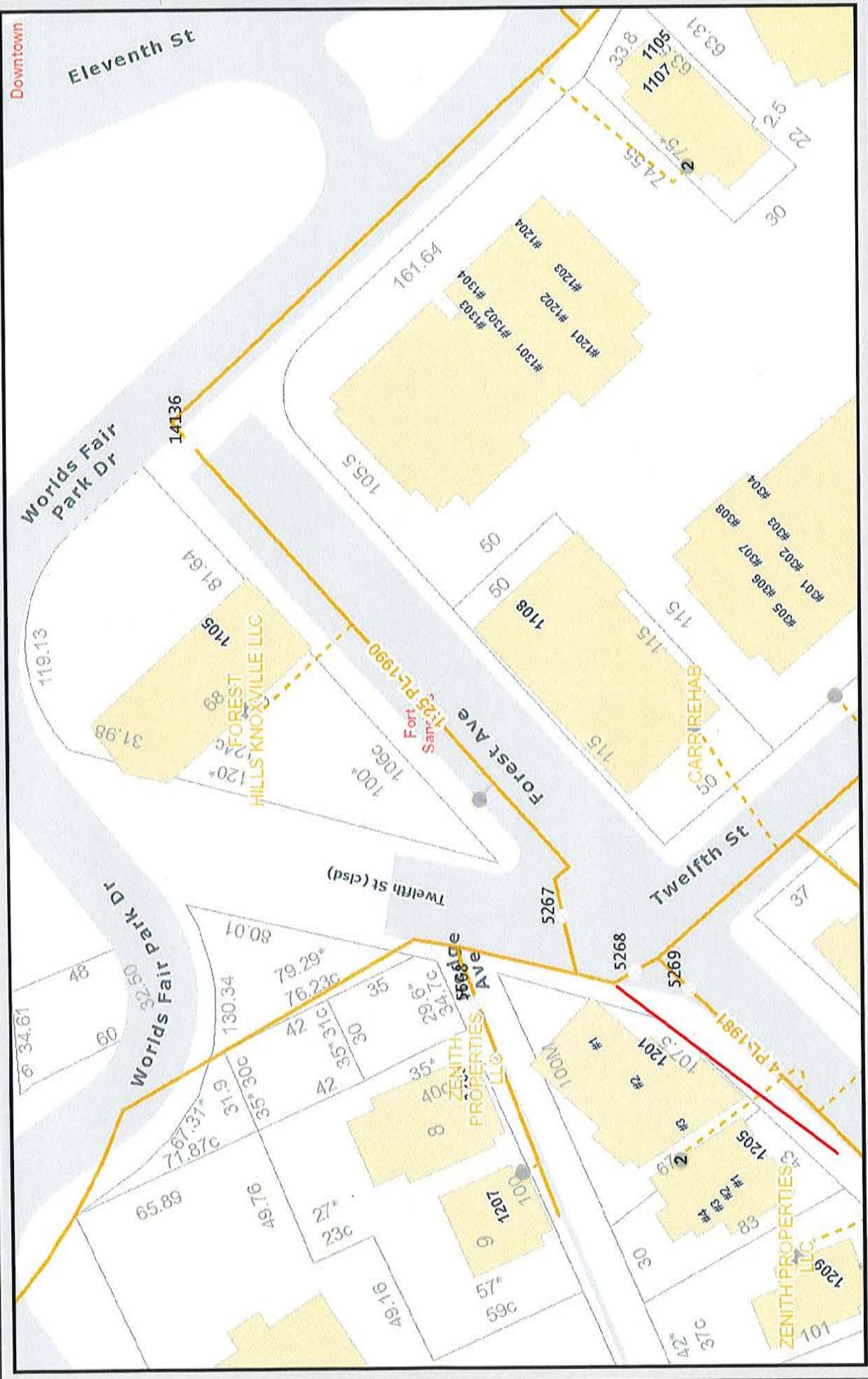


11-A-14-SC Forest Ave (Electric)

CLT Map 94 City Block 10143 & 10146 Parcel #7

Knoxville Utilities Board

KUB makes no representation or warranty as to the accuracy of this map and its information nor to its fitness for use. Any user of this map product accepts the same AS IS, WITH ALL FAULTS, and assumes all responsibility for the use thereof, and further covenants and agrees to hold KUB harmless from any and all damage, loss, or liability arising from any use of this map product. All rights reserved.



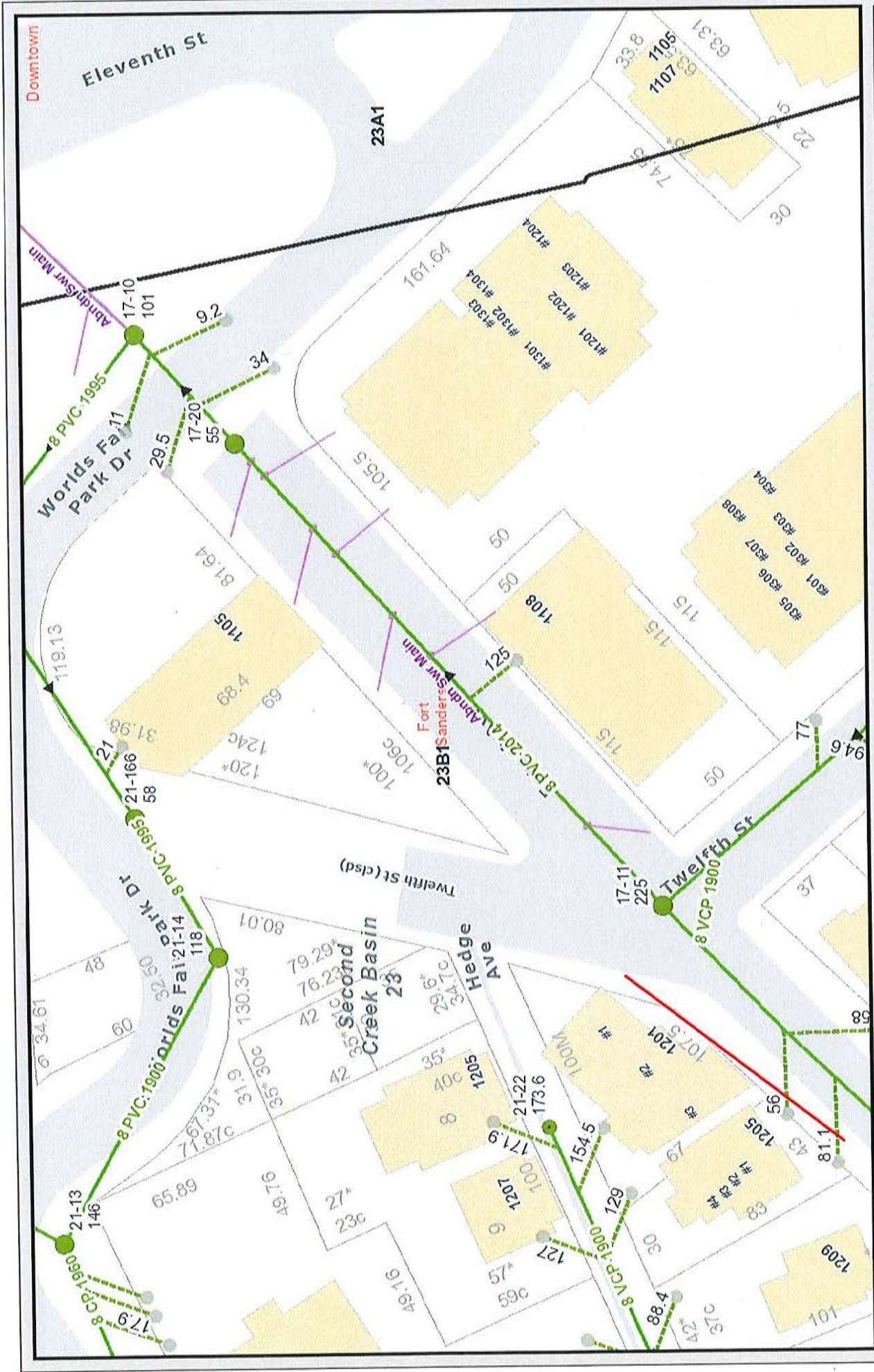
Printed: 5/31/2018 at 3:09:16 PM

11-A-14-SC Forest Ave (Gas)
 CLT Map 94 City Block 10143 & 10146 Parcel #7

Knoxville Utilities Board

KUB makes no representation or warranty as to the accuracy of this map and its information nor to its fitness for use. Any user of this map product accepts the same AS IS, WITH ALL FAULTS, and assumes all responsibility for the use thereof, and further covenants and agrees to hold KUB harmless from any and all damage, loss, or liability arising from any use of this map product. All rights reserved.

Created By: Christian Wiberley



Printed: 5/31/2018 at 3:07:57 PM

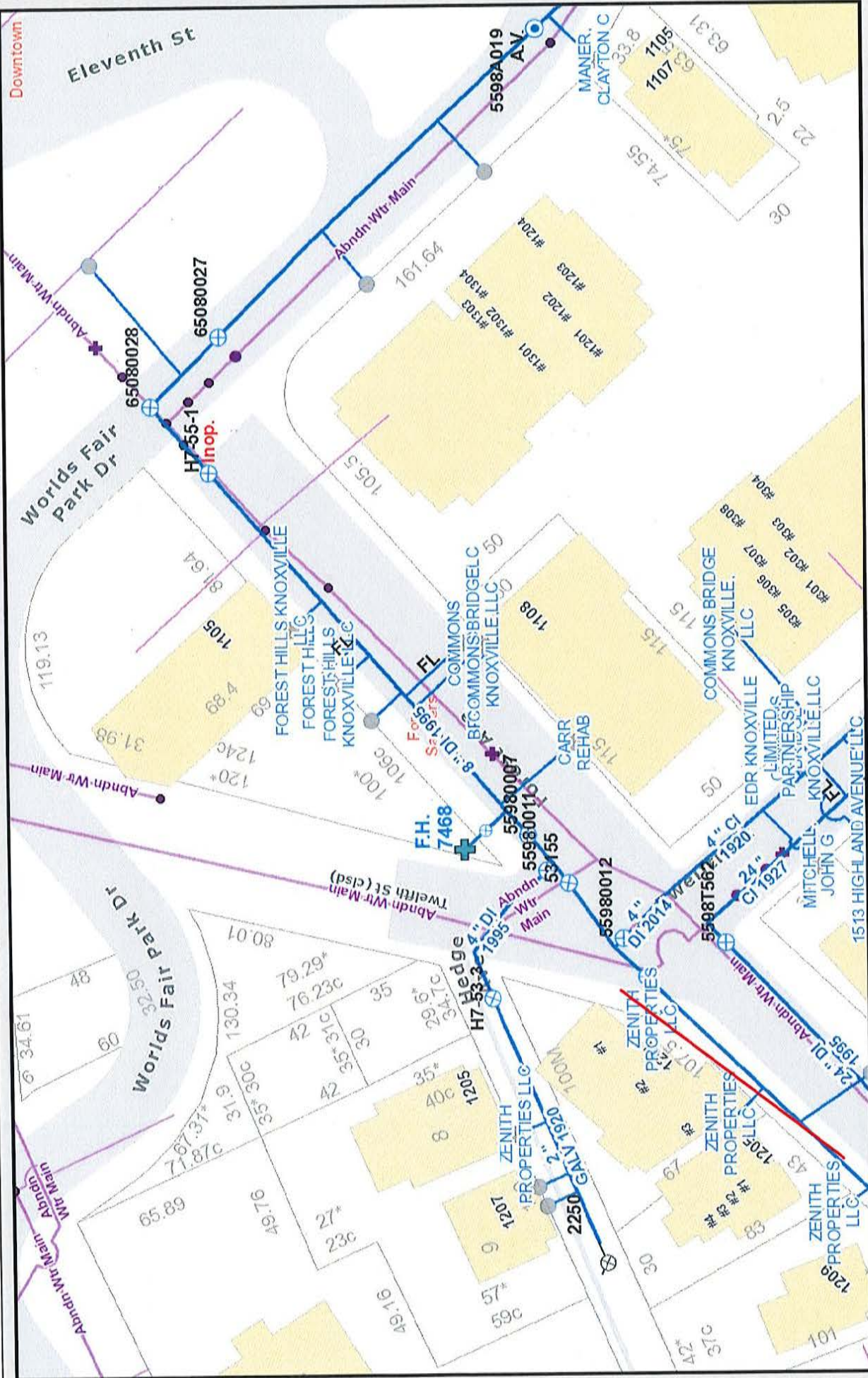


11-A-14-SC Forest Ave (Sewer)

CLT Map 94 City Block 10143 & 10146 Parcel #7

Knoxville Utilities Board

KUB makes no representation or warranty as to the accuracy of this map and its information nor to its fitness for use. Any user of this map product accepts the same AS IS, WITH ALL FAULTS, and assumes all responsibility for the use thereof, and further covenants and agrees to hold KUB harmless from any and all damage, loss, or liability arising from any use of this map product. All rights reserved.



Printed: 5/31/2018 at 3:08:45 PM

11-A-14-SC Forest Ave (Water)

CLT Map 94 City Block 10143 & 10146 Parcel #7

Knoxville Utilities Board

KUB makes no representation or warranty as to the accuracy of this map and its information nor to its fitness for use. Any user of this map product accepts the same AS IS, WITH ALL FAULTS, and assumes all responsibility for the use thereof, and further covenants and agrees to hold KUB harmless from any and all damage, loss, or liability arising from any use of this map product. All rights reserved.