



# USE ON REVIEW REPORT

▶ **FILE #:** 6-G-19-UR

**AGENDA ITEM #:** 41

**AGENDA DATE:** 6/13/2019

▶ **APPLICANT:** SYCAMORE SIGN SERVICE

OWNER(S): Fort Sanders-Parkwest Medical Center

TAX ID NUMBER: 119 01836 & 01837

[View map on KGIS](#)

JURISDICTION: City Council District 2 & Commission District 3

STREET ADDRESS: 9352 Park West Blvd

▶ **LOCATION:** South side of Sherrill Boulevard, West end of Park West Boulevard, North of I-40 / I-75

▶ **APPX. SIZE OF TRACT:** 32.11 acres

SECTOR PLAN: Northwest County

GROWTH POLICY PLAN: Urban Growth Area

ACCESSIBILITY: Access is via Sherrill Blvd., a four lane, median divided, major collector street with a right-of-way width of 100' and Park West Blvd., a four lane, median divided, minor collector street with a right-of-way width of 100'.

UTILITIES: Water Source: Knoxville Utilities Board

Sewer Source: Knoxville Utilities Board

WATERSHED: Turkey Creek and Ten Mile Creek

▶ **ZONING:** PC-1 (Retail and Office Park), PC (Planned Commercial) & OB (Office, Medical, and Related Services)

▶ **EXISTING LAND USE:** Medical Center

▶ **PROPOSED USE:** Sign Plans for Medical Center

HISTORY OF ZONING: None noted

SURROUNDING LAND USE AND ZONING: North: Vacant land and golf course - PC (Planned Commercial), PR (Planned Residential) & OS (Open Space)

South: I-40 / I-75 - C-3 (General Commercial)

East: Medical and professional offices and vacant land - PC (Planned Commercial) & OB (Office, Medical, and Related Services)

West: Mixed businesses - PC-1 (Retail and Office Park)

NEIGHBORHOOD CONTEXT: This site is located in an area dominated by medical facilities and other office type uses on the north side of I-40 / I-75.

## STAFF RECOMMENDATION:

▶ **APPROVE the development plan for the proposed signage system for the medical center subject to 3 conditions.**

1. Obtaining the additional sign variance from the Knoxville Board of Zoning Appeals (BZA) for the proposed main business monument sign for Parkwest Medical Center located at the western end of Park West

Boulevard.

2. Meeting all applicable requirements of the Knoxville Zoning Ordinance sign regulations.
3. Meeting all applicable requirements of the Knox County Zoning Ordinance sign regulations.

With the conditions noted, this plan meets the requirements for approval of a Use-on-Review in the PC-1, PC & OB zoning districts

#### **COMMENTS:**

The applicant is proposing a new unified sign system for the Parkwest Medical Center located off of Sherrill Blvd. and Park West Blvd. The proposed sign system will replace the existing signs at the medical center and provide additional signage for the medical center expansion. The proposed sign system includes 29 new signs with 15 signs being within the City of Knoxville and 14 signs within Knox County. The new signs include new wall signs for the medical center building to identify the business and the main entrances for the facility. The main business monument sign for Parkwest Medical Center will be located at the western end of Park West Boulevard. Additional business monument signs will be located at the two main entrances off of Sherrill Blvd. The remaining signs are primarily directional signs to help the public navigate around the driveway network for the facility.

In reviewing the proposed sign system it was determined that a number of signs within the City did not meet the requirements of the sign regulations. The Knoxville Board of Zoning Appeals approved several variances for the proposed sign system at their meeting on May 16, 2019. It has been determined that an additional variance will be needed for the main business monument sign for Parkwest Medical Center located at the western end of Park West Boulevard. No variances are needed for the proposed signs located within Knox County.

#### **EFFECT OF THE PROPOSAL ON THE SUBJECT PROPERTY, SURROUNDING PROPERTIES AND THE COMMUNITY AS A WHOLE**

1. The proposed sign system, which includes several directional signs, will help improve traffic circulation from the adjacent street system and internal circulation within the medical complex.

#### **CONFORMITY OF THE PROPOSAL TO CRITERIA ESTABLISHED BY THE KNOXVILLE ZONING ORDINANCE**

1. The proposal with the approved variances and recommended conditions meets all requirements of the PC-1, PC & OB zoning districts as well as other criteria for approval of a use on review.
2. The proposed master signage system is consistent with the following general standards for uses permitted on review: The proposal is consistent with the adopted plans and policies of the One Year Plan, General Plan and Sector Plan. The use is in harmony with the general purpose and intent of the Zoning Ordinance. The use is compatible with the character of the neighborhood where it is proposed. The use will not significantly injure the value of adjacent property. The use will not draw substantial additional traffic through residential areas. No surrounding land uses will pose a hazard or create an unsuitable environment for the proposed use.

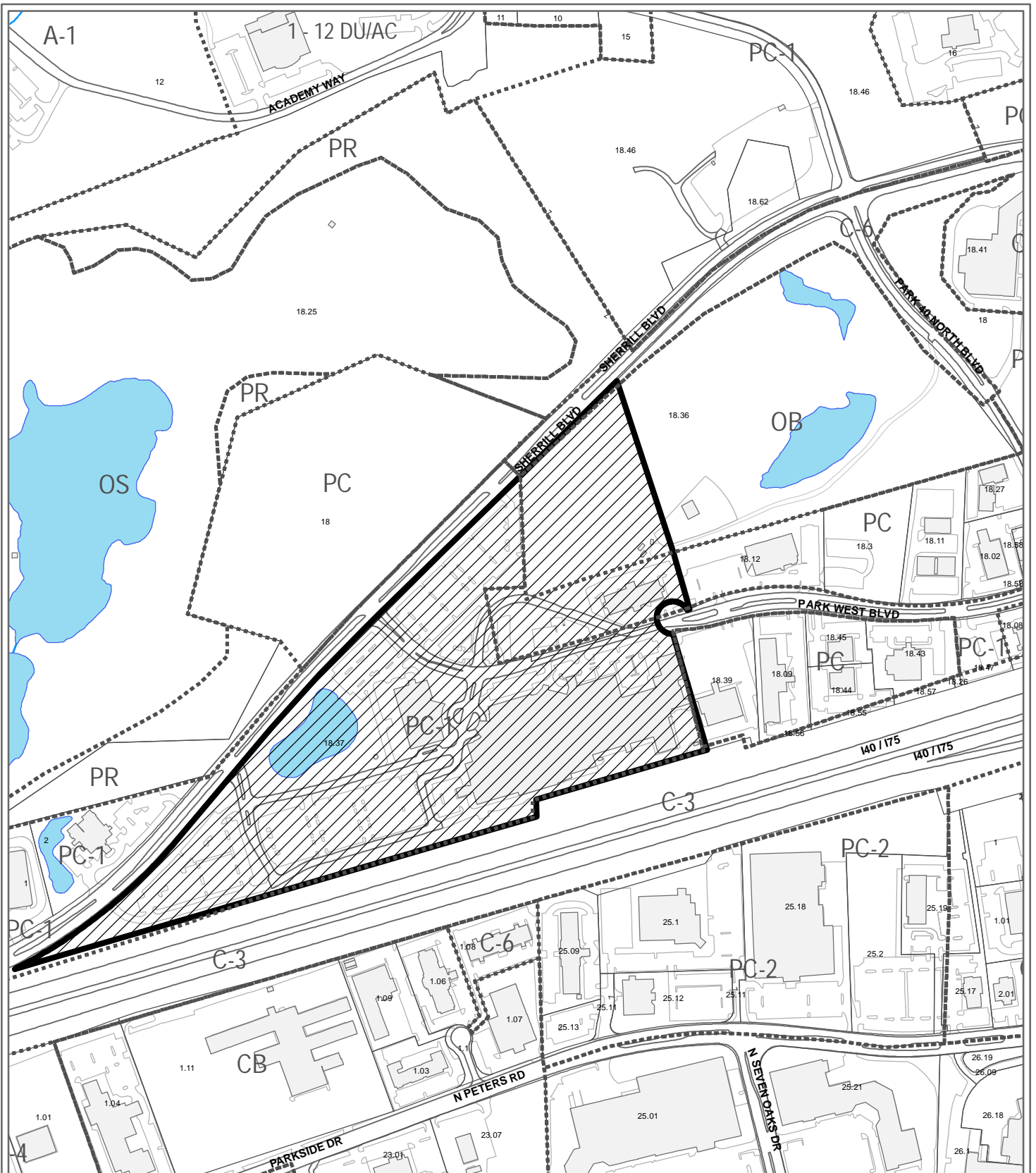
#### **CONFORMITY OF THE PROPOSAL TO ADOPTED MPC PLANS**

1. The Northwest County Sector Plan and the City of Knoxville One Year Plan propose office uses for this area. The medical complex complies with both the Sector Plan and One Year Plan.
2. The site is located within the Urban Growth Area as designated on the Knoxville-Knox County-Farragut Growth Policy Plan map.

ESTIMATED TRAFFIC IMPACT: Not required.

ESTIMATED STUDENT YIELD: Not applicable.

The Planning Commission's approval or denial of this request is final, unless the action is appealed to the Knoxville City Council. The date of the Knoxville City Council hearing will depend on when the appeal application is filed. Appellants have 15 days to appeal a Planning Commission decision in the City.



**6-G-19-UR  
USE ON REVIEW**

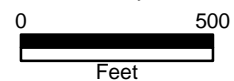


Sign Plans for Medical Center in PC-1 (Retail and Office Park), PC (Planned Commercial) & OB (Office)

Petitioner: Sycamore Sign Service

Map No: 119

Jurisdiction: City and County

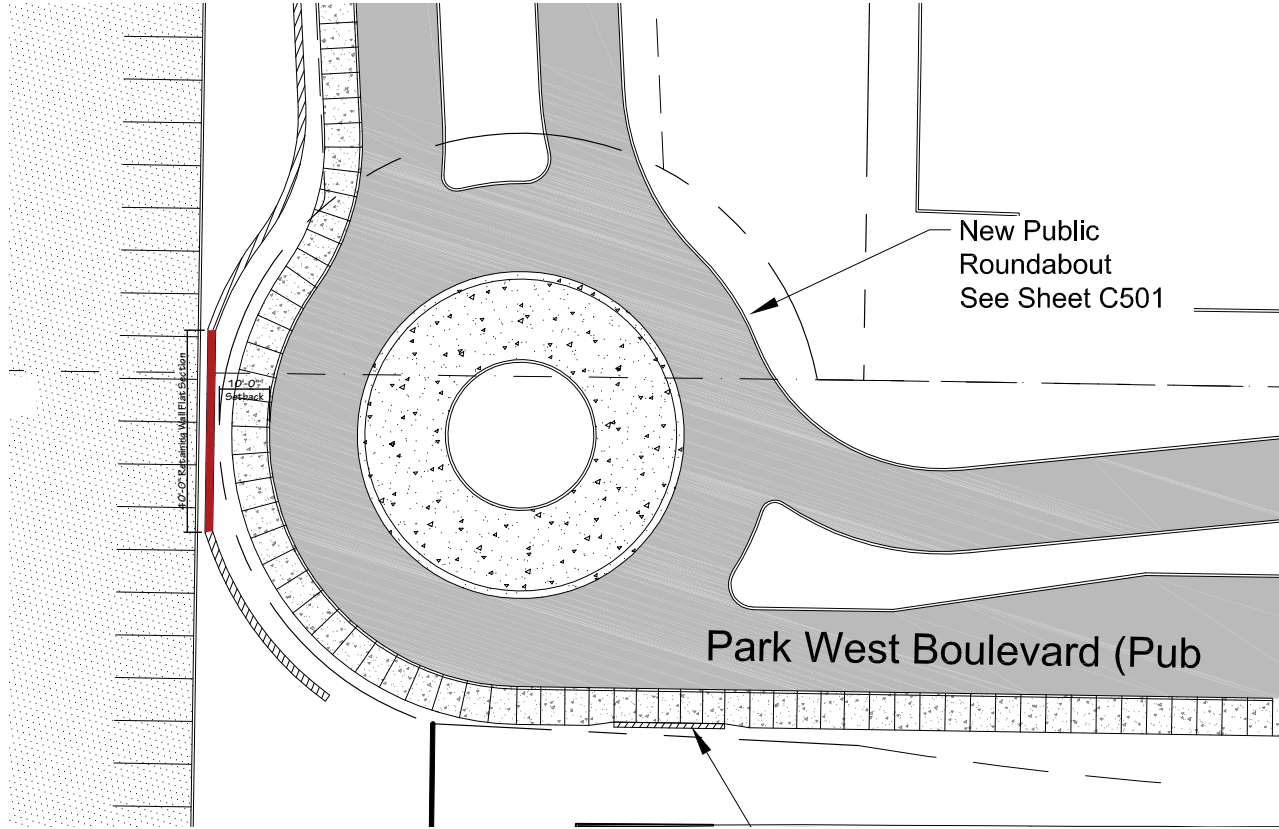


Original Print Date: 5/16/2019

Revised: 5/21/2019

Metropolitan Planning Commission \* City / County Building \* Knoxville, TN 37902

X:\2\Chief\Parkwest Master Summary\Drawings\Parkwest Expansion C10 - Site Plan - PV Expansion.dwg Aug 22, 2017 - 4:47pm bowh-1.DWG Copyright 2008



**signcraft**  
*Identifying your way*  
 1301 Antioch Pike - Nashville, TN 37211  
 P: 615-885-2900 F: 615-885-2989

Drawing Description:  
**Parkwest Expansion  
 Preliminary  
 Exterior Signage Site Plan**

No.	Date	Revision

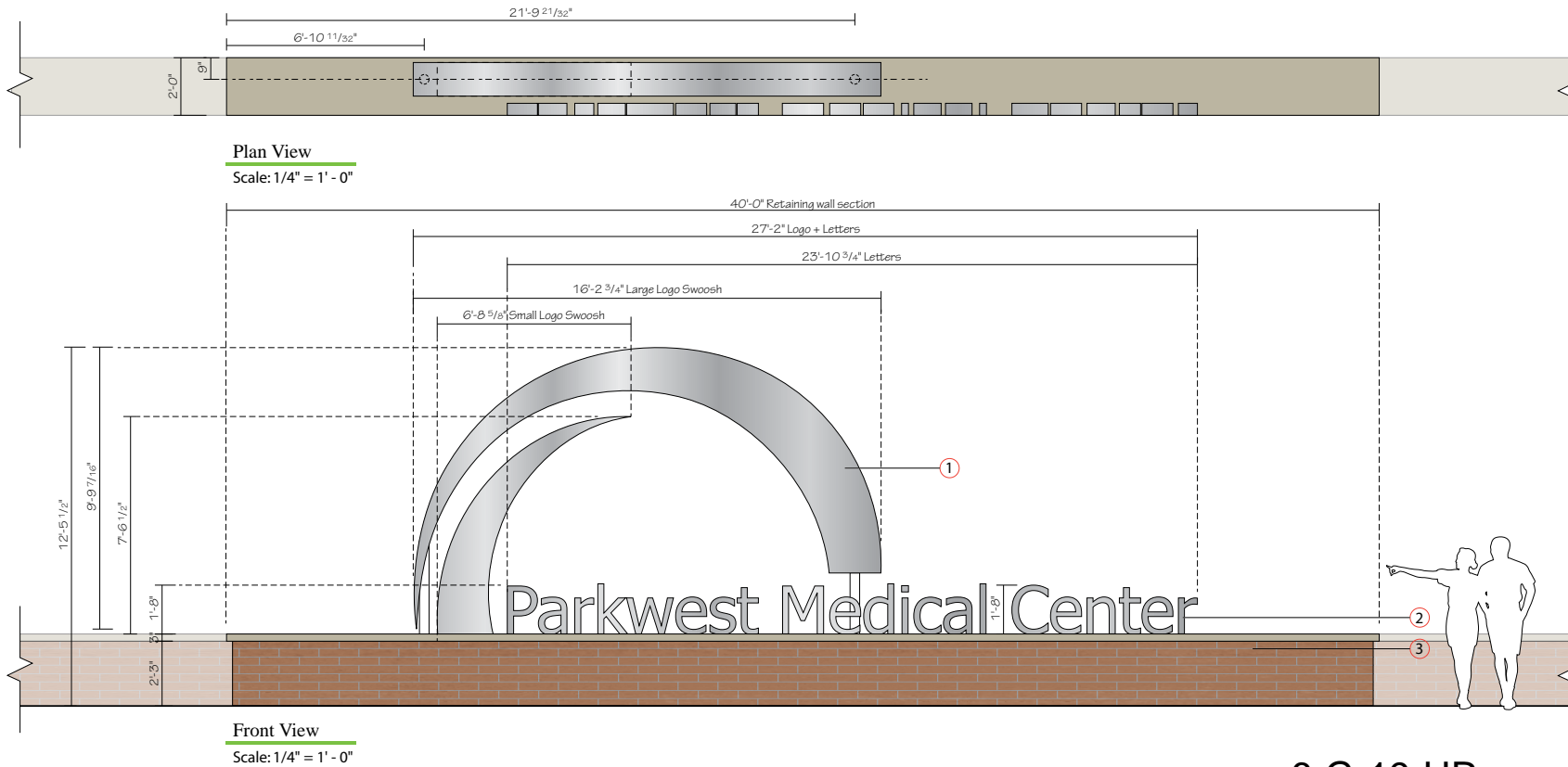
6-G-19-UR

Drawn By	
Checked	
Approved	
Job No.	217001
1"=40' Scale	09-22-2017 Date

**G101**  
 Sheet No.



## NO EXISTING SIGNAGE NEW CONSTRUCTION



### 6-G-19-UR

#### NOTES:

- ① Fabricated Aluminum Logo Element, 14" Deep. All Surfaces Painted MP Brushed Aluminum. Faces, Backs, & Returns to be finished. 4" Sched 40 Pipes for mounting to base.
- ② 5" Deep Non-Illuminated Channel Letters, all surfaces painted MP Brushed Aluminum. Faces, Backs, & Returns to be finished.
- ③ EXISTING Brick Base / Retaining Wall and Stone Cap By Others. Ground Lighting By Others.



Expansion Project 2017

Date: 09/21/17

Revised: 04/17/19

Drawn by: AJS

Scale: As Noted in Drawing

File Name: Loc 02.ai

File Folder: P> Parkwest Medical  
Center>Parkwest  
Expansion 2017>  
Shop Drawing>  
Exterior

Project Manager: CSR

Sign Type: **Campus ID**

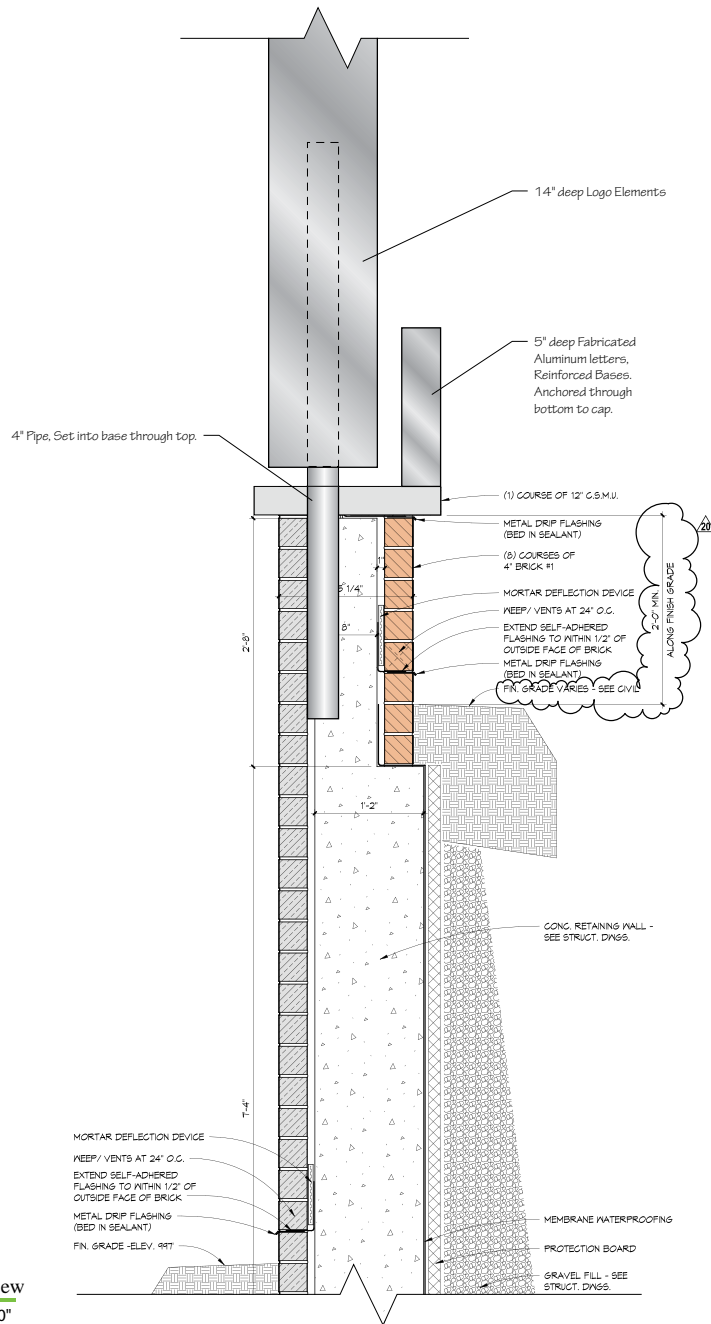
Location: **02**

Non Illuminated Campus  
Monument ID



1301 Antioch Pike  
Nashville, TN 37211  
p. 615-885-2900  
f. 615-885-2989

This design is being submitted for use as a product being manufactured for you by Signcraft, Inc. It is not to be reproduced, copied or manufactured by you or given to any other manufacturer without written permission from Signcraft, Inc. Unauthorized use is subject to design charge and will include any collection fees.



Wall Detail View  
Scale: 3/4" = 1' - 0"

6-G-19-UR



Expansion Project 2017

Date: 09/21/17

Revised: 04/05/19

Drawn by: AJS

Scale: As Noted in Drawing

File Name: Loc 02.ai

P> Parkwest Medical  
Center>Parkwest  
Expansion 2017>  
Shop Drawing>  
Exterior

Project Manager: CSR

Sign Type: **Campus ID**


Location: **02**


Non Illuminated Campus  
Monument ID



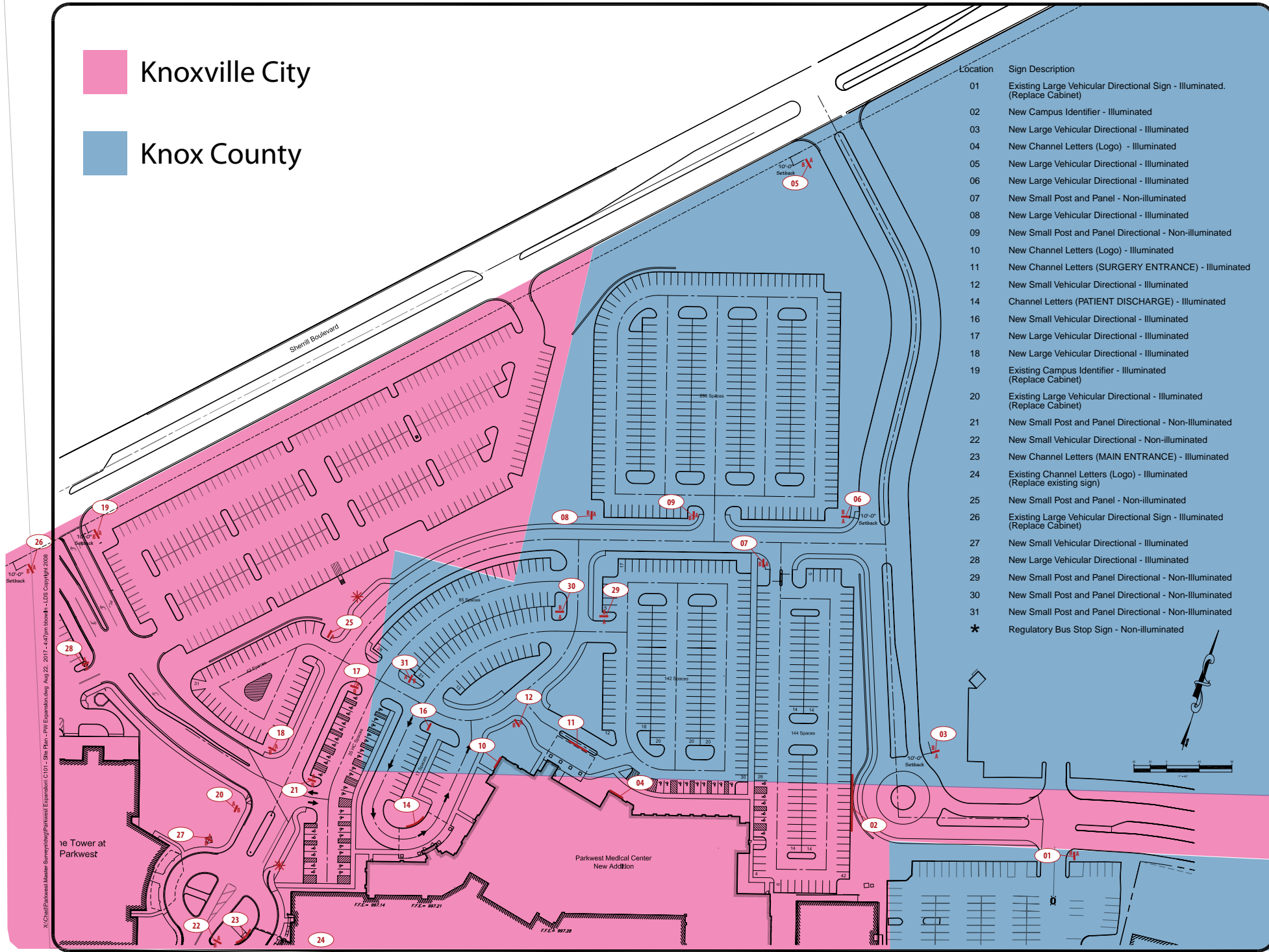
1301 Antioch Pike  
Nashville, TN 37211  
p. 615-885-2900  
f. 615-885-2989

This design is being submitted for use as a product being manufactured for you by Signcraft, Inc. It is not to be reproduced, copied or manufactured by you or given to any other manufacturer without written permission from Signcraft, Inc. Unauthorized use is subject to design charge and will include any collection fees.

 Knoxville City

 Knox County

Location	Sign Description
01	Existing Large Vehicular Directional Sign - Illuminated. (Replace Cabinet)
02	New Campus Identifier - Illuminated
03	New Large Vehicular Directional - Illuminated
04	New Channel Letters (Logo) - Illuminated
05	New Large Vehicular Directional - Illuminated
06	New Large Vehicular Directional - Illuminated
07	New Small Post and Panel - Non-illuminated
08	New Large Vehicular Directional - Illuminated
09	New Small Post and Panel Directional - Non-illuminated
10	New Channel Letters (Logo) - Illuminated
11	New Channel Letters (SURGERY ENTRANCE) - Illuminated
12	New Small Vehicular Directional - Illuminated
14	Channel Letters (PATIENT DISCHARGE) - Illuminated
16	New Small Vehicular Directional - Illuminated
17	New Large Vehicular Directional - Illuminated
18	New Large Vehicular Directional - Illuminated
19	Existing Campus Identifier - Illuminated (Replace Cabinet)
20	Existing Large Vehicular Directional - Illuminated (Replace Cabinet)
21	New Small Post and Panel Directional - Non-Illuminated
22	New Small Vehicular Directional - Non-illuminated
23	New Channel Letters (MAIN ENTRANCE) - Illuminated
24	Existing Channel Letters (Logo) - Illuminated (Replace existing sign)
25	New Small Post and Panel - Non-illuminated
26	Existing Large Vehicular Directional Sign - Illuminated (Replace Cabinet)
27	New Small Vehicular Directional - Illuminated
28	New Large Vehicular Directional - Illuminated
29	New Small Post and Panel Directional - Non-Illuminated
30	New Small Post and Panel Directional - Non-Illuminated
31	New Small Post and Panel Directional - Non-Illuminated
*	Regulatory Bus Stop Sign - Non-illuminated



**signcraft**<sup>ys</sup>  
*Identifying your way*  
 1301 Antioch Pike - Nashville, TN 37211  
 P: 615-885-2900 F: 615-885-2989

**Parkwest Expansion  
 Preliminary  
 Exterior Signage Site Plan**

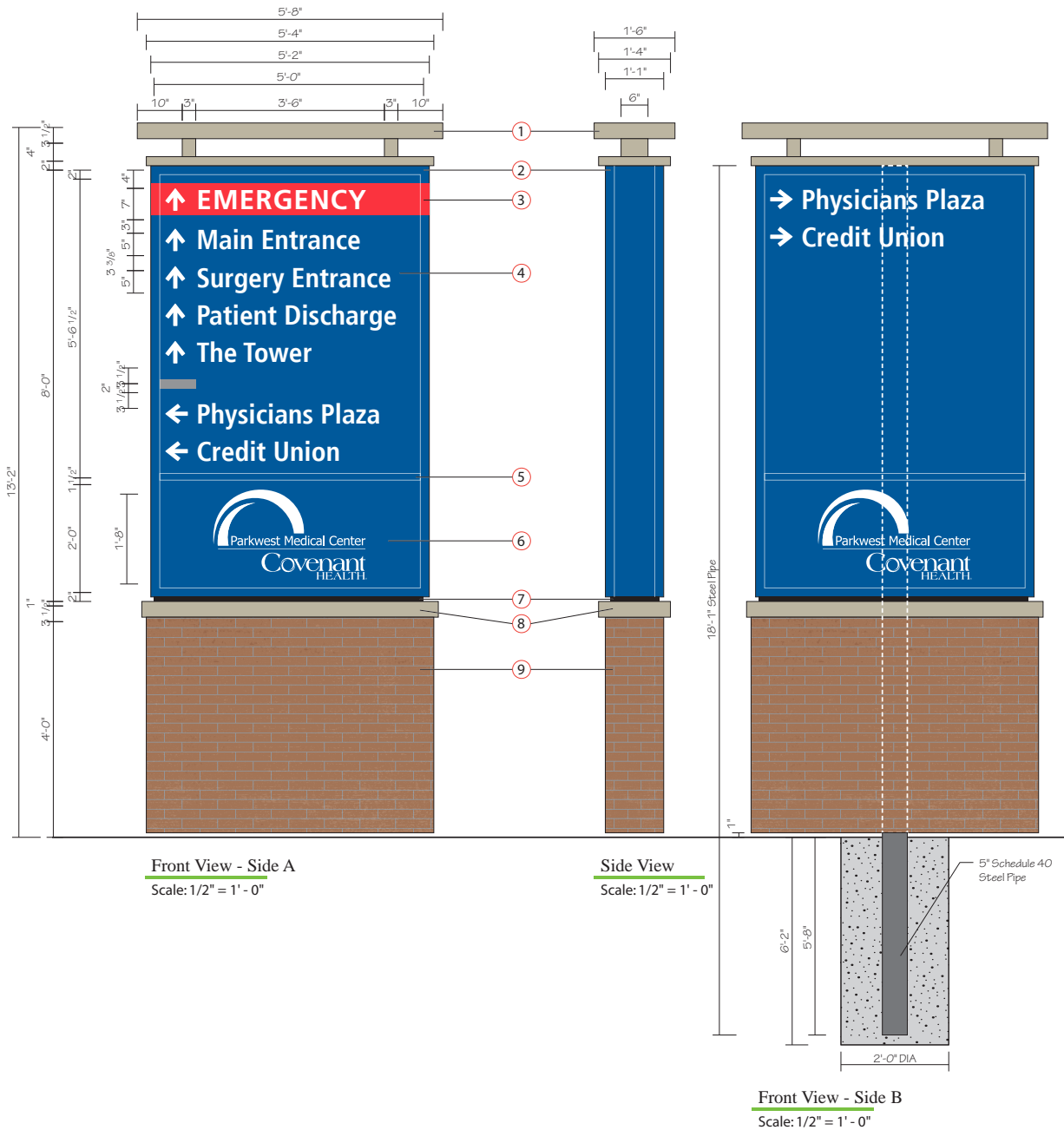
No.	Date	Revision

6-G-19-UR

Drawn By	
Checked	
Approved	
Job No.	217001
1"=40' Scale	09-22-2017 Date

**G101**  
 Sheet No.

X:\Client\Parkwest Master Survey\Signage\Parkwest Expansion CID - Site Plan - PV Expansion.dwg Aug 22, 2017 - 4:47pm bowh...LDS Copyright 2008



Front View - Side A  
Scale: 1/2" = 1' - 0"

Side View  
Scale: 1/2" = 1' - 0"

Front View - Side B  
Scale: 1/2" = 1' - 0"

**NOTES:**

- ① Fabricated Aluminum Structure, painted to match building MPB7 197. White LED Up Lighting in bottom of structure to illuminate bottom of top part of structure.
- ② 13" Deep fabricated aluminum LED illuminated cabinet sign with 2" retainers. Cabinet to be painted to match PMS 294c.
- ③ Paint on cabinet to match PMS 200c.
- ④ 3/16" Translucent white polycarbonate faces with opaque vinyl to match PMS 294c, translucent red vinyl to match PMS 200c. Letters and arrows reversed out to illuminate white, gray bar to match PMS Cool Gray 7c.
- ⑤ 1 1/2" Divider painted to match PMS 294c.
- ⑥ 3/16" Translucent white polycarbonate faces with opaque vinyl to match PMS 294c. Logo reversed out to illuminate white.
- ⑦ 1" Reveal painted black.
- ⑧ Fabricated aluminum cap structure, painted to match building MPB7 197.
- ⑨ Aluminum Framed Base, Clad with Cement Board, Brick Veneer, and Grout to match existing.

Font: Frutiger Condensed Bold



Expansion Project 2017

Date: 09/22/17

Revised: 04/01/19 - AJS

Drawn by: AJS

Scale: As Noted in Drawing

File Name: Loc 01.ai

File Folder: P> Parkwest Medical Center>Parkwest Expansion 2017> Shop Drawing> Exterior

Project Manager: CSR

Sign Type: PVD  
Location: 01

Existing & New Illuminated  
Primary Vehicle Directional



1301 Antioch Pike  
Nashville, TN 37211  
p. 615-885-2900  
f. 615-885-2989

This design is being submitted for use as a product being manufactured for you by Signcraft, Inc. It is not to be reproduced, copied or manufactured by you or given to any other manufacturer without written permission from Signcraft, Inc. Unauthorized use is subject to design charge and will include any collection fees.

EXISTING SIGNAGE



Side A



Side B

PROPOSED SIGNAGE



Side A



Side B



Expansion Project 2017

Date: 09/22/17

Revised: 04/08/19 RPB

Drawn by: AJS

Scale: As Noted in Drawing

File Name: Loc 01.ai

File Folder: P> Parkwest Medical Center>Parkwest Expansion 2017> Shop Drawing> Exterior

Project Manager: CSR

Sign Type: **PVD**

Location: **01**

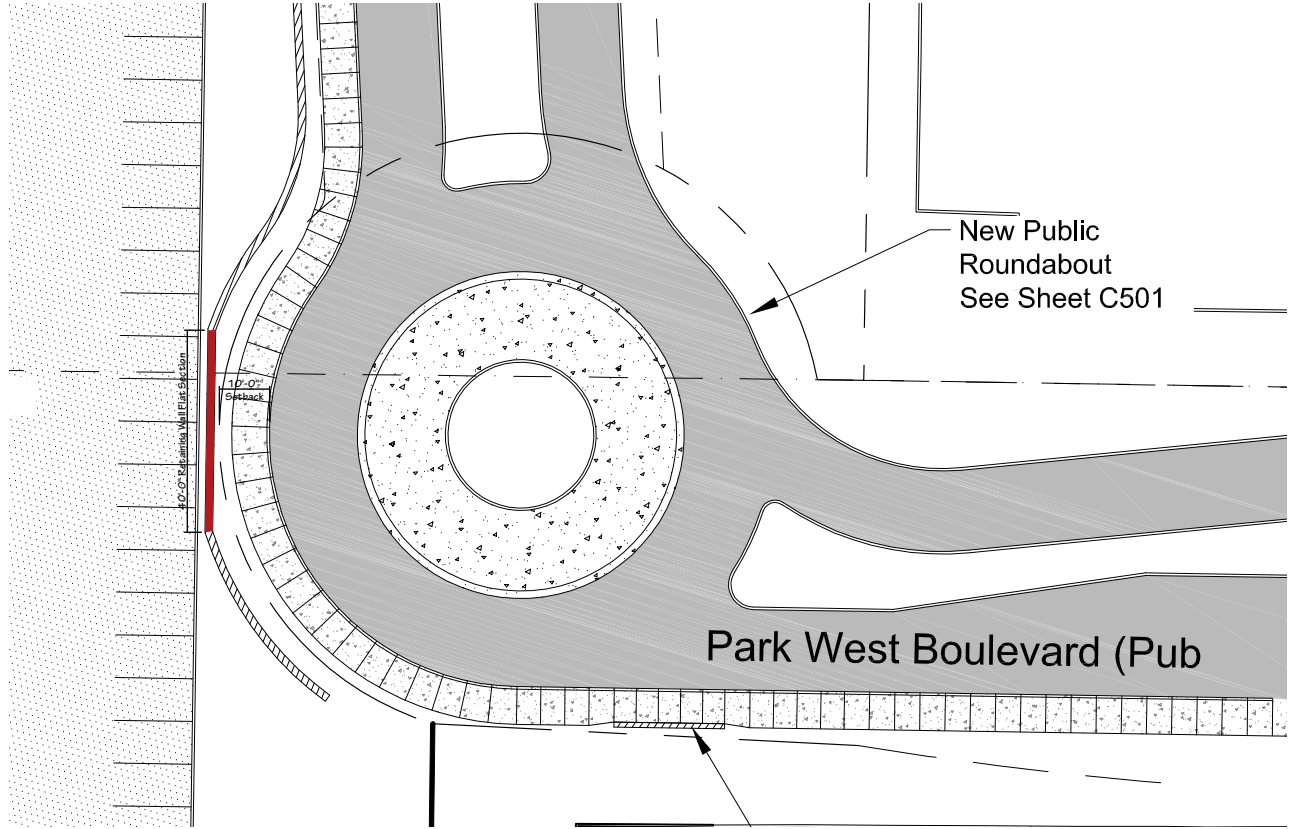
*Existing & New Illuminated Primary Vehicle Directional*



1301 Antioch Pike  
Nashville, TN 37211  
p. 615-885-2900  
f. 615-885-2989

This design is being submitted for use as a product being manufactured for you by Signcraft, Inc. It is not to be reproduced, copied or manufactured by you or given to any other manufacturer without written permission from Signcraft, Inc. Unauthorized use is subject to design charge and will include any collection fees.

X:\2\Chief\Parkwest Master Summary\2017\2017\Site Plan - PV Expansion\2017 - 447\m\_bowl+1.DWG Copyright 2008



Drawing Description:  
**Parkwest Expansion  
 Preliminary  
 Exterior Signage Site Plan**

No.	Date	Revision

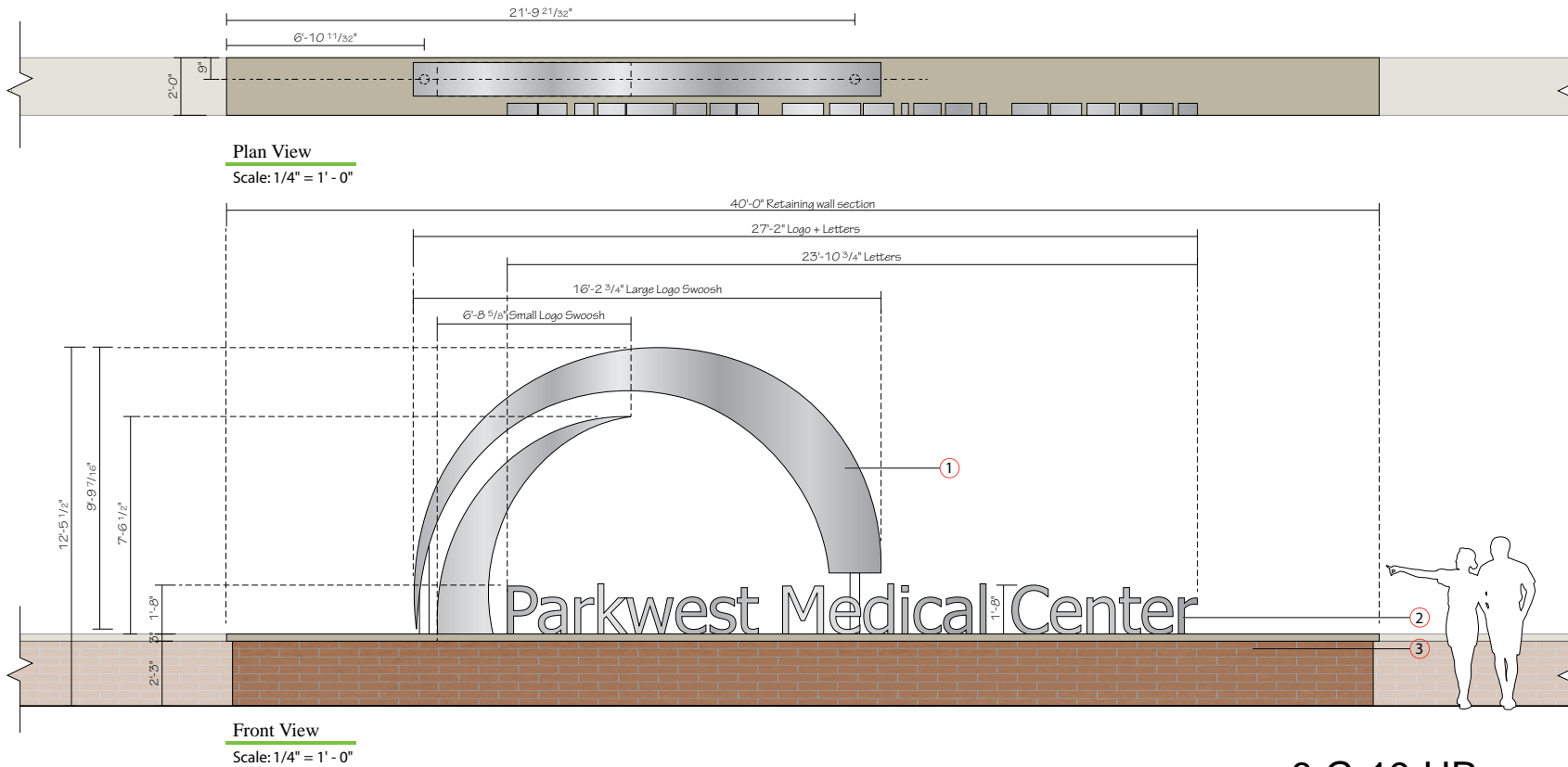
6-G-19-UR

Drawn By	
Checked	
Approved	
Job No.	217001
1"=40' Scale	09-22-2017 Date

**G101**  
 Sheet No.



## NO EXISTING SIGNAGE NEW CONSTRUCTION



### 6-G-19-UR

#### NOTES:

- ① Fabricated Aluminum Logo Element, 14" Deep. All Surfaces Painted MP Brushed Aluminum. Faces, Backs, & Returns to be finished. 4" Sched 40 Pipes for mounting to base.
- ② 5" Deep Non-Illuminated Channel Letters, all surfaces painted MP Brushed Aluminum. Faces, Backs, & Returns to be finished.
- ③ EXISTING Brick Base / Retaining Wall and Stone Cap By Others. Ground Lighting By Others.



Expansion Project 2017

Date: 09/21/17

Revised: 04/17/19

Drawn by: AJS

Scale: As Noted in Drawing

File Name: Loc 02.ai

File Folder: P> Parkwest Medical Center>Parkwest Expansion 2017> Shop Drawing> Exterior

Project Manager: CSR

Sign Type: **Campus ID**

Location: **02**

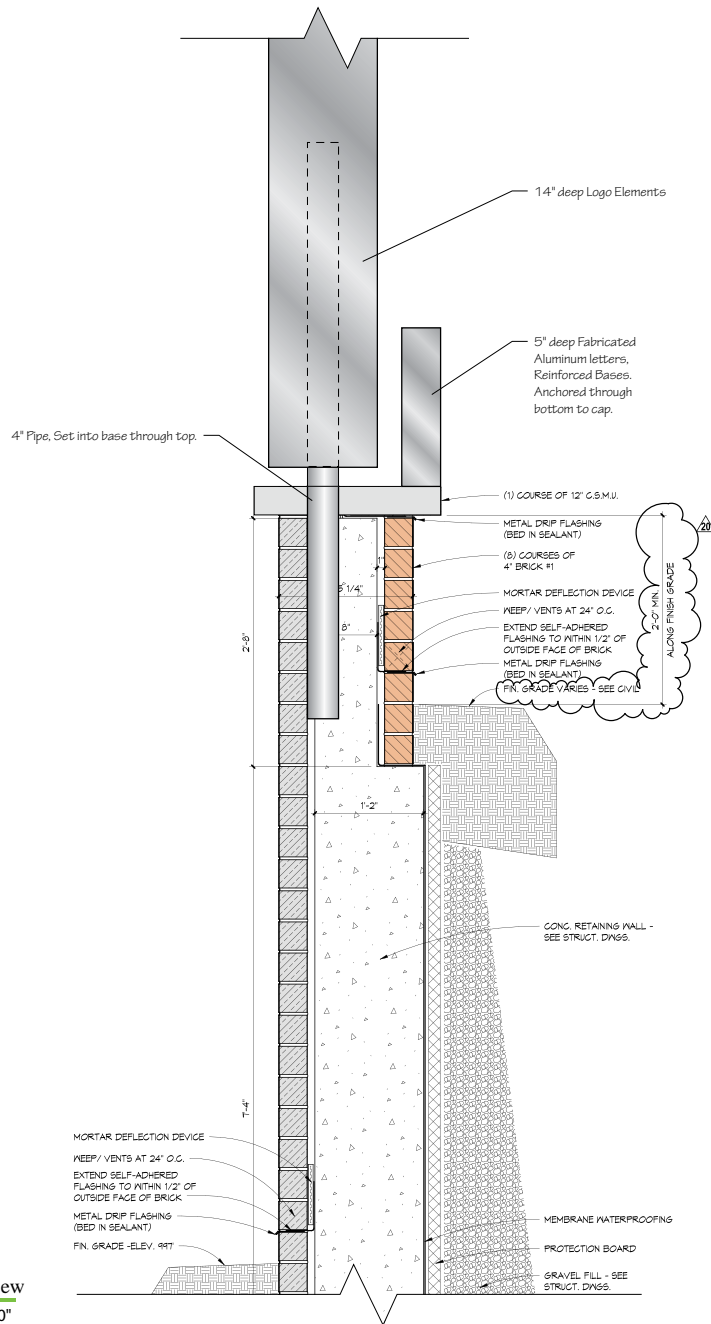
Non Illuminated Campus Monument ID



1301 Antioch Pike  
Nashville, TN 37211  
p. 615-885-2900  
f. 615-885-2989

This design is being submitted for use as a product being manufactured for you by Signcraft, Inc. It is not to be reproduced, copied or manufactured by you or given to any other manufacturer without written permission from Signcraft, Inc. Unauthorized use is subject to design charge and will include any collection fees.





Wall Detail View  
Scale: 3/4" = 1' - 0"

6-G-19-UR



Expansion Project 2017

Date: 09/21/17

Revised: 04/05/19

Drawn by: AJS

Scale: As Noted in Drawing

File Name: Loc 02.ai

P> Parkwest Medical  
Center>Parkwest  
Expansion 2017>  
Shop Drawing>  
Exterior

Project Manager: CSR

Sign Type: **Campus ID**

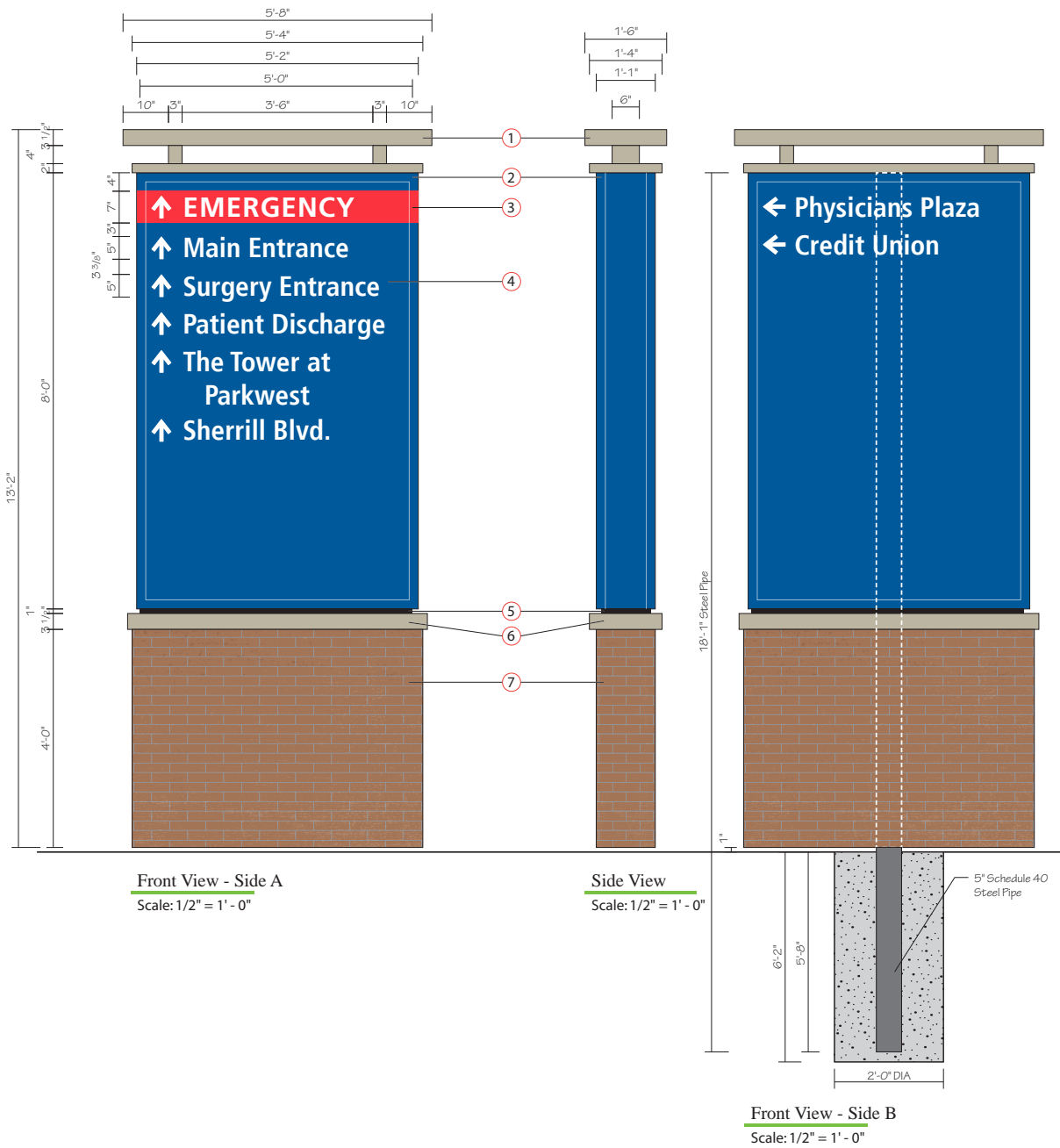
Location: **02**

Non Illuminated Campus  
Monument ID



1301 Antioch Pike  
Nashville, TN 37211  
p. 615-885-2900  
f. 615-885-2989

This design is being submitted for use as a product being manufactured for you by Signcraft, Inc. It is not to be reproduced, copied or manufactured by you or given to any other manufacturer without written permission from Signcraft, Inc. Unauthorized use is subject to design charge and will include any collection fees.



**NO EXISTING SIGNAGE  
NEW CONSTRUCTION**

**NOTES:**

- ① Fabricated Aluminum Structure, painted to match building MPB7 197. White LED Up Lighting in bottom of structure to illuminate bottom of top part of structure.
- ② 13" Deep fabricated aluminum LED illuminated cabinet sign with 2" retainers. Cabinet to be painted to match FMS 294c.
- ③ Paint on cabinet to match FMS 200c.
- ④ 3/16" Translucent white polycarbonate faces with opaque vinyl to match FMS 294c, translucent red vinyl to match FMS 200c. Letters and arrows reversed out to illuminate white.
- ⑤ 1" Reveal painted black.
- ⑥ Fabricated aluminum brick cap structure, painted to match building MPB7 197.
- ⑦ Aluminum Framed Base, Clad with Cement Board, Brick Veneer, and Grout to match existing.

**GC to provide 277V / 20A circuit with stubout within 3 feet of sign location.**

Font: Frutiger Condensed Bold



Expansion Project 2017

Date: 09/22/17

Revised: 04/01/19 - AJS

Drawn by: AJS

Scale: As Noted in Drawing

File Name: Loc 03.ai

File Folder: P> Parkwest Medical  
Center>Parkwest  
Expansion 2017>  
Shop Drawing>  
Exterior

Project Manager: CSR

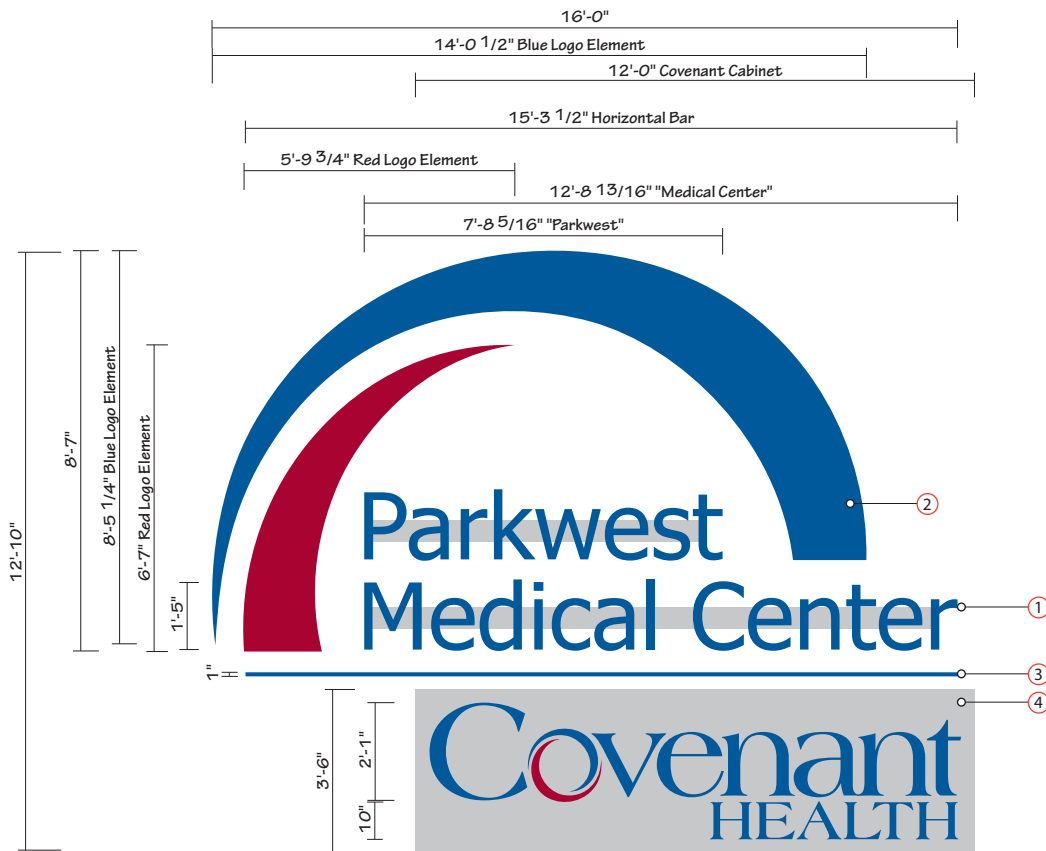
Sign Type: **PVD**

Location: **03**  
New Illuminated Primary  
Vehicle Directional - Exterior



1301 Antioch Pike  
Nashville, TN 37211  
p. 615-885-2900  
f. 615-885-2989

This design is being submitted for use as a product being manufactured for you by Signcraft, Inc. It is not to be reproduced, copied or manufactured by you or given to any other manufacturer without written permission from Signcraft, Inc. Unauthorized use is subject to design charge and will include any collection fees.



Front View

Scale: 3/8" = 1' - 0"

205 Sq.Ft

**NO EXISTING SIGNAGE  
NEW CONSTRUCTION**

NOTES:

- ① 5" deep LED illuminated channel letters on 5" narrow raceways. Channel letters painted to match PMS 294C Dark Blue with perforated vinyl to match PMS 294C. Letters will illuminate White. Raceways painted to match building color - **TBD**.
- ② 9" Deep LED Illuminated Logo Elements. Translucent Flex Faces to match PMS 294C and PMS 201C Red.
- ③ 1" Aluminum Square Tubing Bar with capped ends, painted to match PMS 294c Dark Blue
- ④ 9" Deep Fabricated Aluminum cabinet, painted to match building. Push through logo with perforated film on face to match PMS 294C and PMS 201C Red. Logo will illuminate White

**GC to provide electrical one 20amp/120V Circuit with stub outs as shown for power connection.**

**GC to provide 3/4" thick plywood blocking for securing sign**



Expansion Project 2017

Date: 10/06/17

Revised: 04/01/19 - RPB

Drawn by: AJS

Scale: As Noted

File Name: Loc 04\_2.ai

File Folder: P> Parkwest Medical  
Center>Parkwest  
Expansion 2017>  
Shop Drawing>  
Exterior

Project Manager: CSR

Sign Type: **CLR**

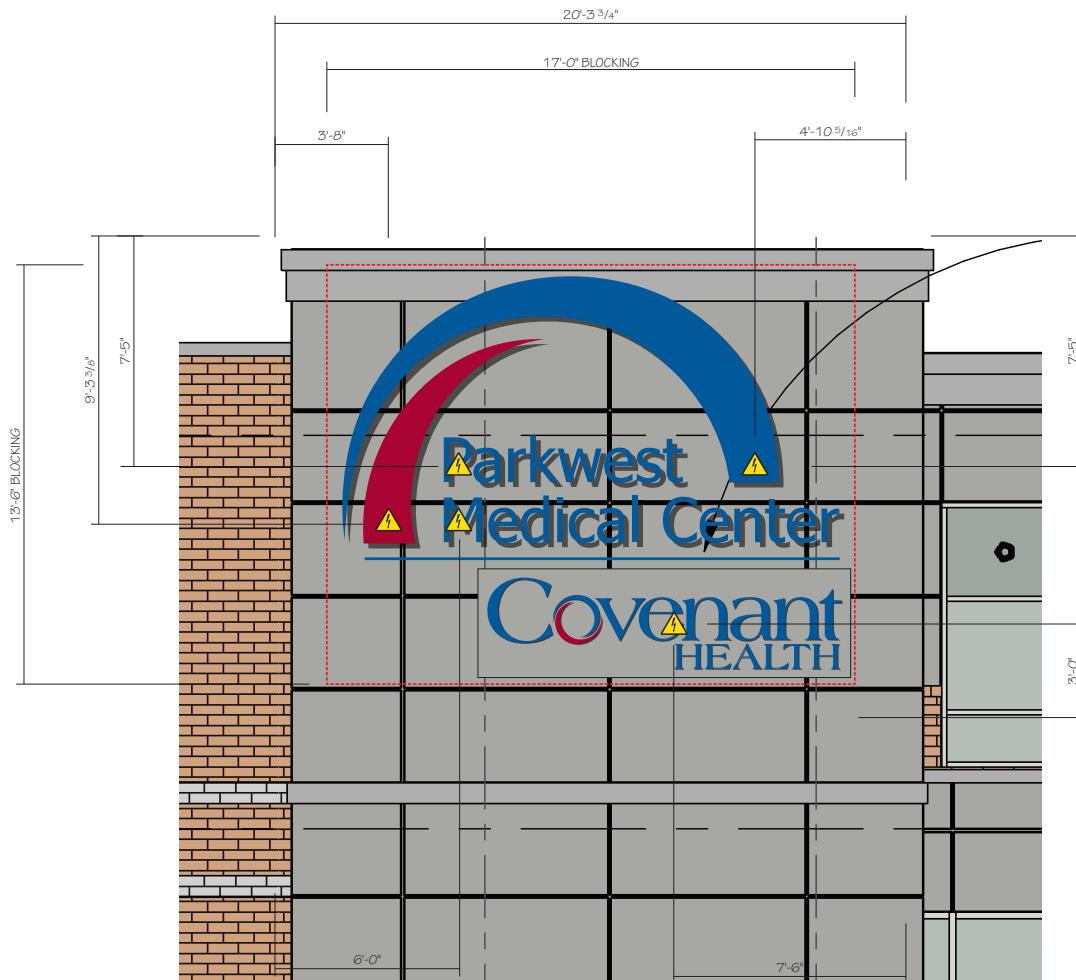
Location: **04**

*New Illuminated Channel Letters  
and Logo*



1301 Antioch Pike  
Nashville, TN 37211  
p. 615-885-2900  
f. 615-885-2989

This design is being submitted for use as a product being manufactured for you by Signcraft, Inc. It is not to be reproduced, copied or manufactured by you or given to any other manufacturer without written permission from Signcraft, Inc. Unauthorized use is subject to design charge and will include any collection fees.



East Elevation Details  
Scale: 1/4" = 1' - 0"

**NO EXISTING SIGNAGE  
NEW CONSTRUCTION**



Expansion Project 2017

Date: 10/06/17

Revised: 03/14/19

Drawn by: AJS

Scale: As Noted

File Name: Loc 04\_2.ai

File Folder: P> Parkwest Medical  
Center>Parkwest  
Expansion 2017>  
Shop Drawing>  
Exterior

Project Manager: CSR

Sign Type: **CLR**

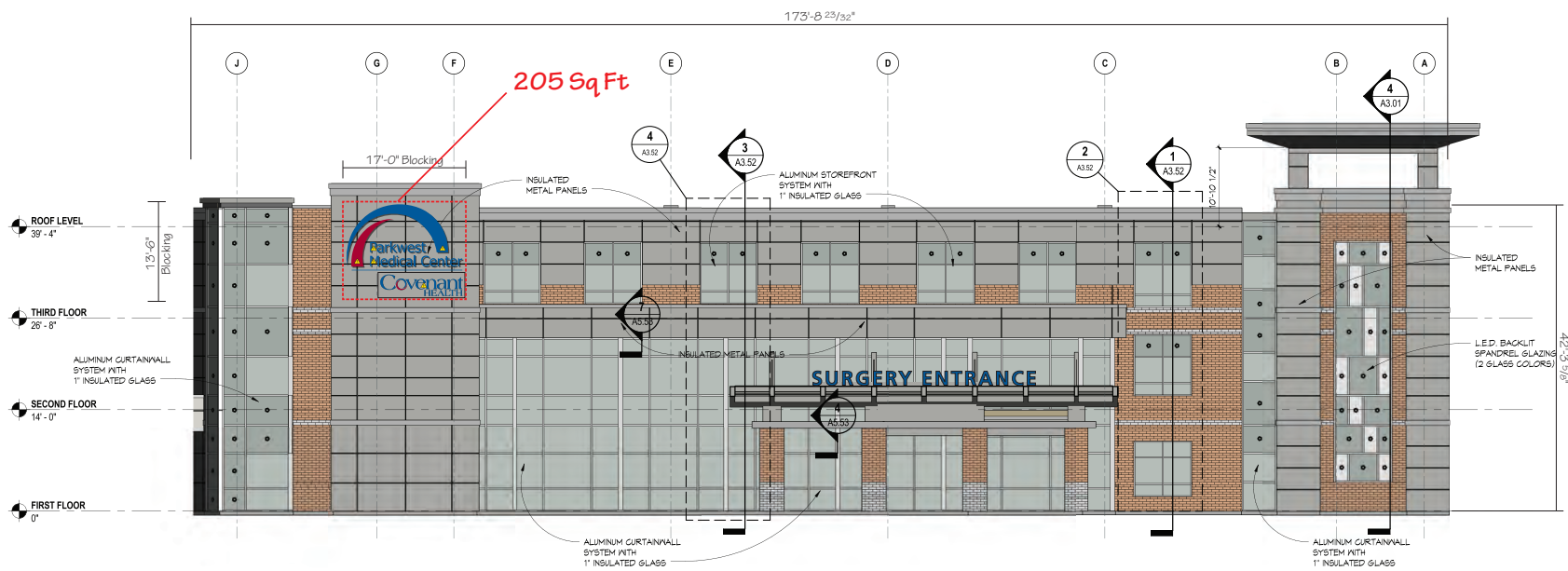
Location: **04**

*New Illuminated Channel Letters  
and Logo*



1301 Antioch Pike  
Nashville, TN 37211  
p. 615-885-2900  
f. 615-885-2989

This design is being submitted for use as a product being manufactured for you by Signcraft, Inc. It is not to be reproduced, copied or manufactured by you or given to any other manufacturer without written permission from Signcraft, Inc. Unauthorized use is subject to design charge and will include any collection fees.



Full East Elevation  
Scale: 1/16" = 1' - 0"



Expansion Project 2017

Date: 10/06/17

Revised: 04/01/19 - RPB

Drawn by: AJS

Scale: As Noted

File Name: Loc 04\_2.ai

File Folder: P> Parkwest Medical  
Center>Parkwest  
Expansion 2017>  
Shop Drawing>  
Exterior

Project Manager: CSR

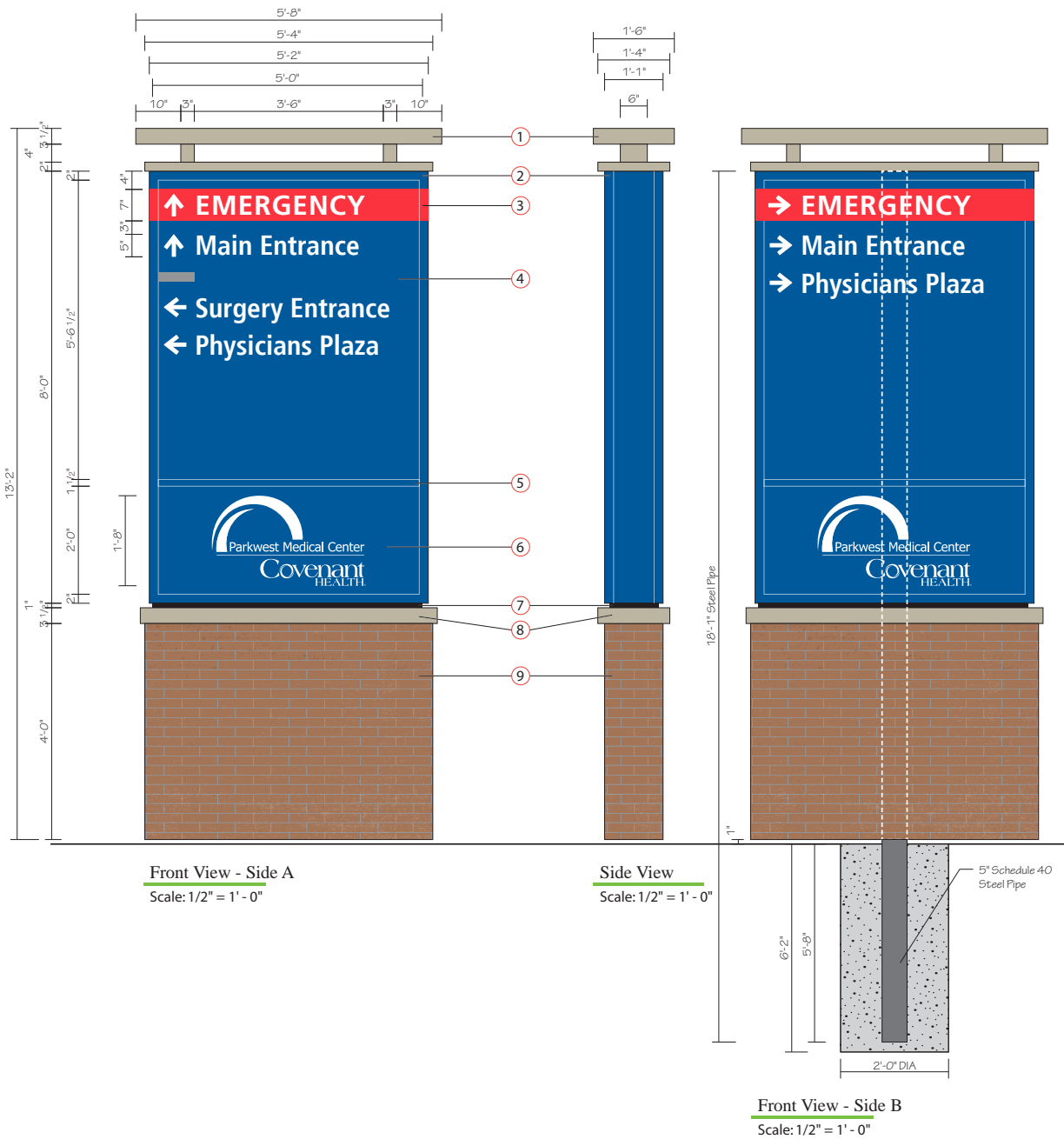
Sign Type: CLR

Location: 04  
New Illuminated Channel Letters  
and Logo



1301 Antioch Pike  
Nashville, TN 37211  
p. 615-885-2900  
f. 615-885-2989

This design is being submitted for use as a product being manufactured for you by Signcraft, Inc. It is not to be reproduced, copied or manufactured by you or given to any other manufacturer without written permission from Signcraft, Inc. Unauthorized use is subject to design charge and will include any collection fees.



## NO EXISTING SIGNAGE NEW CONSTRUCTION

### NOTES:

- ① Fabricated Aluminum Structure, painted to match building MPB7197. White LED Up Lighting in bottom of structure to illuminate bottom of top part of structure.
- ② 13" Deep fabricated aluminum LED illuminated cabinet sign with 2" retainers. Cabinet to be painted to match PMS 294c.
- ③ Paint on cabinet to match PMS 200c.
- ④ 3/16" Translucent white polycarbonate faces with opaque vinyl to match PMS 294c, translucent red vinyl to match PMS 200c. Letters and arrows reversed out to illuminate white, gray bar to match PMS Cool Cray 7c.
- ⑤ 1 1/2" Divider painted to match PMS 294c.
- ⑥ 3/16" Translucent white polycarbonate faces with opaque vinyl to match PMS 294c. Logo reversed out to illuminate white.
- ⑦ 1" Reveal painted black.
- ⑧ Fabricated aluminum cap structure, painted to match building MPB7197.
- ⑨ Aluminum Framed Base, Clad with Cement Board, Brick Veneer, and Grout to match existing.

GC to provide 277V / 20A circuit with stubout within 3 feet of sign location.

Font: Frutiger Condensed Bold



Expansion Project 2017

Date: 09/22/17

Revised: 04/01/19 - AJS

Drawn by: AJS

Scale: As Noted in Drawing

File Name: Loc 05.ai

File Folder: P> Parkwest Medical Center>Parkwest Expansion 2017> Shop Drawing> Exterior

Project Manager: CSR

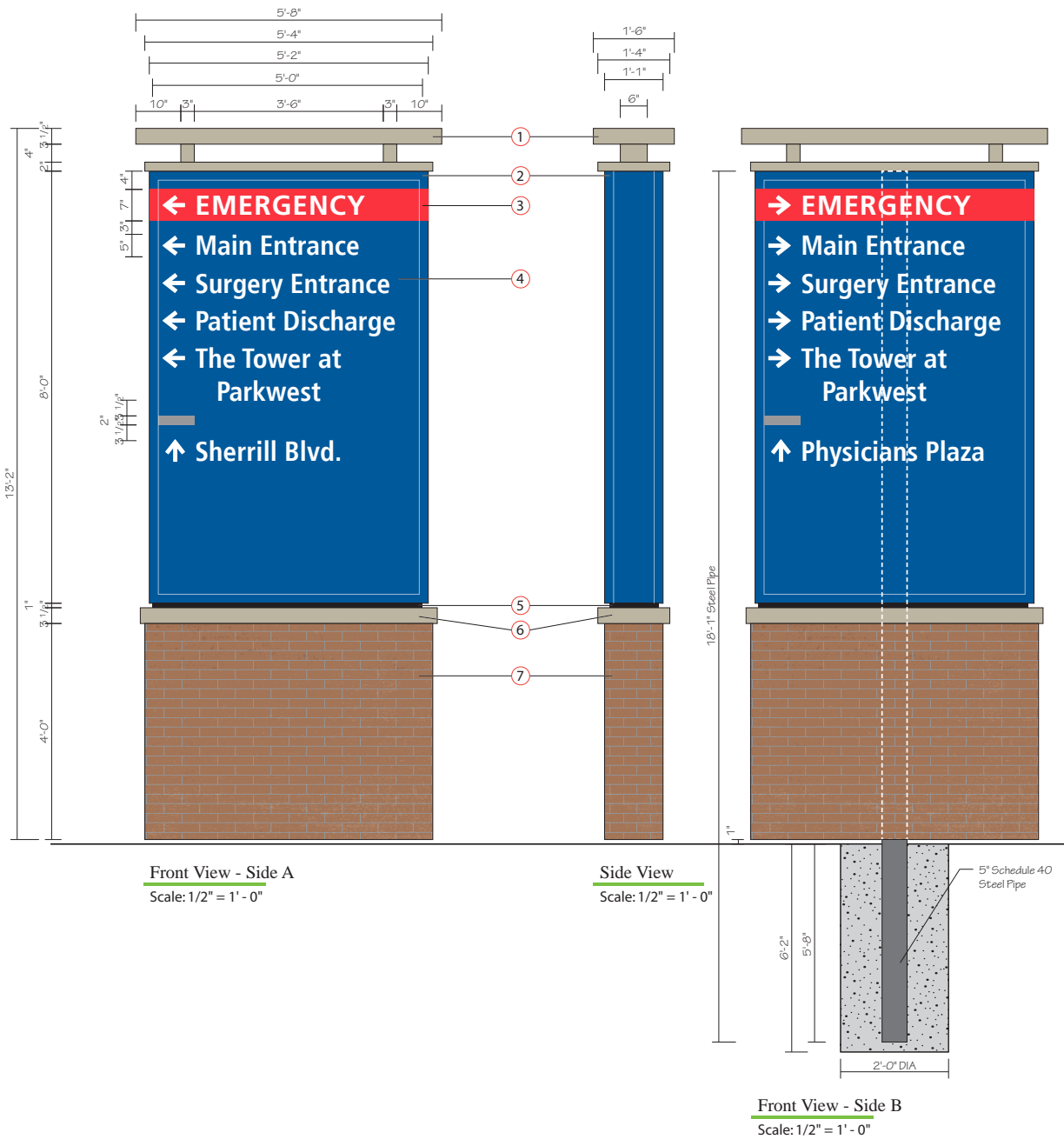
Sign Type: PVD

Location: 05  
New Illuminated  
Primary Vehicle Directional



1301 Antioch Pike  
Nashville, TN 37211  
p. 615-885-2900  
f. 615-885-2989

This design is being submitted for use as a product being manufactured for you by Signcraft, Inc. It is not to be reproduced, copied or manufactured by you or given to any other manufacturer without written permission from Signcraft, Inc. Unauthorized use is subject to design charge and will include any collection fees.



**NO EXISTING SIGNAGE  
NEW CONSTRUCTION**

**NOTES:**

- ① Fabricated Aluminum Structure, painted to match building MPB7 197. White LED Up Lighting in bottom of structure to illuminate bottom of top part of structure.
- ② 13" Deep fabricated aluminum LED illuminated cabinet sign with 2" retainers. Cabinet to be painted to match PMS 294c.
- ③ Paint on cabinet to match PMS 200c.
- ④ 3/16" Translucent white polycarbonate faces with opaque vinyl to match PMS 294c, translucent red vinyl to match PMS 200c. Letters and arrows reversed out to illuminate white. gray bar to match PMS Cool Cray 7c.
- ⑤ 1" Reveal painted black.
- ⑥ Fabricated aluminum brick cap structure, painted to match building MPB7 197.
- ⑦ Aluminum Framed Base, Clad with Cement Board, Brick Veneer, and Grout to match existing.

GC to provide 277V / 20A circuit with stubout within 3 feet of sign location.

Font: Frutiger Condensed Bold



Expansion Project 2017

Date: 09/22/17

Revised: 04/01/19 - AJS

Drawn by: AJS

Scale: As Noted in Drawing

File Name: Loc 06.ai

File Folder: P> Parkwest Medical  
Center>Parkwest  
Expansion 2017>  
Shop Drawing>  
Exterior

Project Manager: CSR

Sign Type: PVD

Location: 06

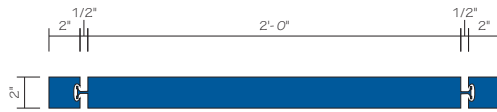
New Illuminated  
Primary Vehicle Directional



1301 Antioch Pike  
Nashville, TN 37211  
p. 615-885-2900  
f. 615-885-2989

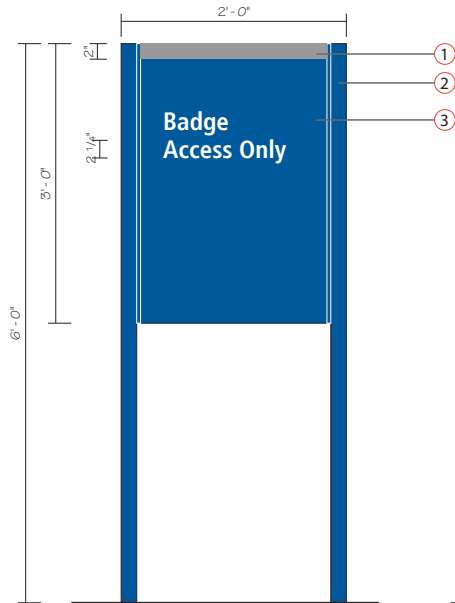
This design is being submitted for use as a product being manufactured for you by Signcraft, Inc. It is not to be reproduced, copied or manufactured by you or given to any other manufacturer without written permission from Signcraft, Inc. Unauthorized use is subject to design charge and will include any collection fees.



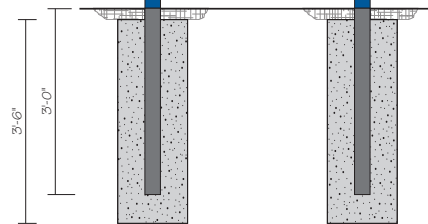


Plan View  
Scale: 1 1/2" = 1' - 0"

**NO EXISTING SIGNAGE  
NEW CONSTRUCTION**



Front View - Side A  
Scale: 3/4" = 1' - 0"



Front View - Side B  
Scale: 3/4" = 1' - 0"

**NOTES:**

- ① Gray Stripe painted to match PMS Cool Gray 7c.
- ② Charleston #225 Posts with reveal, painted to match PMS 294c.
- ③ Charleston frame and aluminum faces painted to match PMS 294c with white reflective vinyl graphics.

Font: Frutiger Condensed Bold



Expansion Project 2017

Date: 09/22/17

Revised: 04/01/19 - AJS

Drawn by: AJS

Scale: As Noted in Drawing

File Name: Loc 07.ai

File Folder: P> Parkwest Medical Center>Parkwest Expansion 2017> Shop Drawing> Exterior

Project Manager: CSR

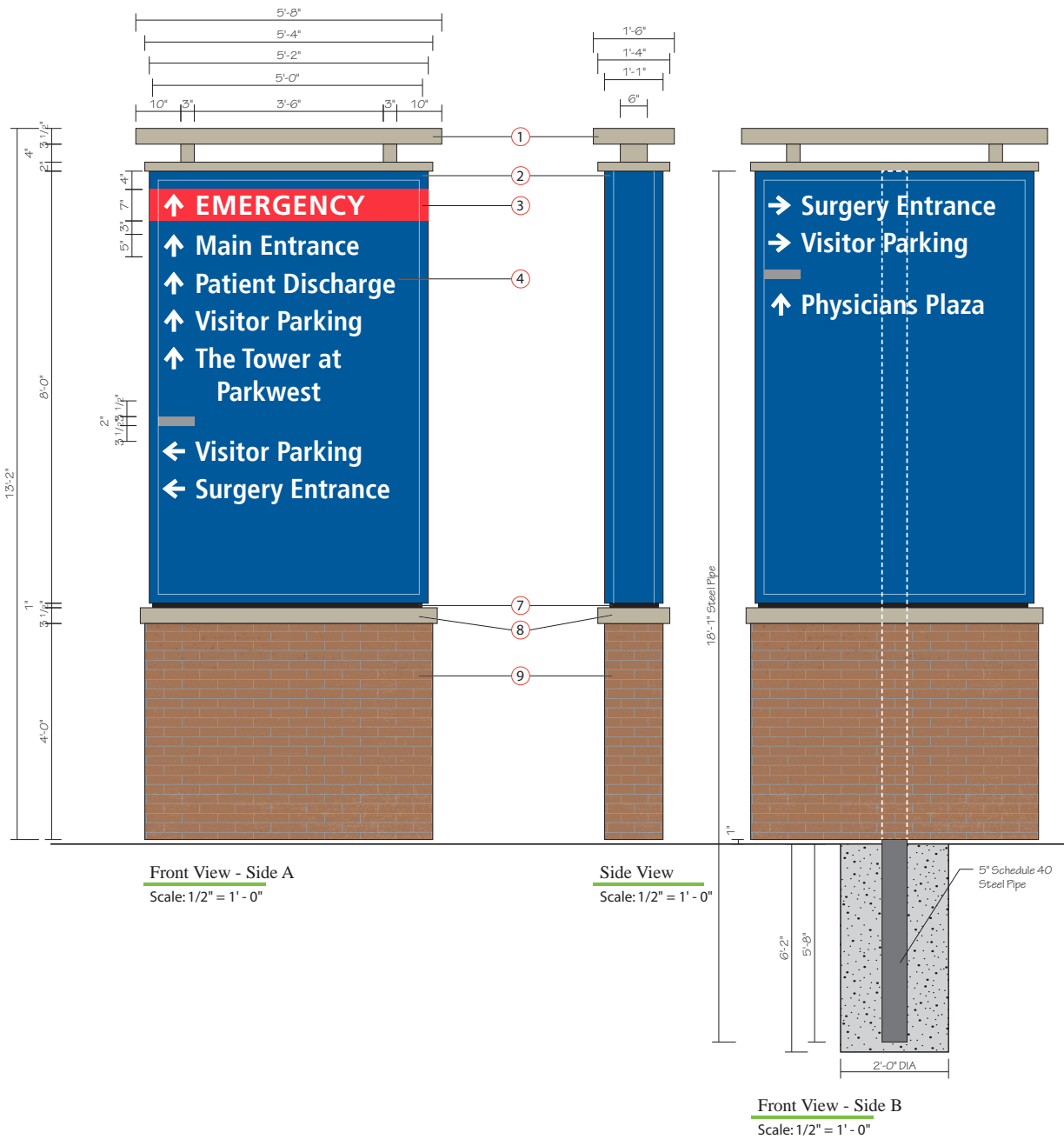
Sign Type: **SPP**  
Location: **07**

*New Small Post & Panel  
Directional - Exterior*



1301 Antioch Pike  
Nashville, TN 37211  
p. 615-885-2900  
f. 615-885-2989

This design is being submitted for use as a product being manufactured for you by Signcraft, Inc. It is not to be reproduced, copied or manufactured by you or given to any other manufacturer without written permission from Signcraft, Inc. Unauthorized use is subject to design charge and will include any collection fees.



**NO EXISTING SIGNAGE  
NEW CONSTRUCTION**

**NOTES:**

- ① Fabricated Aluminum Structure, painted to match building MPB7197. White LED Up Lighting in bottom of structure to illuminate bottom of top part of structure.
- ② 13" Deep fabricated aluminum LED illuminated cabinet sign with 2" retainers. Cabinet to be painted to match PMS 294c.
- ③ Paint on cabinet to match PMS 200c.
- ④ 3/16" Translucent white polycarbonate faces with opaque vinyl to match PMS 294c, translucent red vinyl to match PMS 200c. Letters and arrows reversed out to illuminate white, gray bar to match PMS Cool Gray 7c.
- ⑤ 1 1/2" Divider painted to match PMS 294c.
- ⑥ 3/16" Translucent white polycarbonate faces with opaque vinyl to match PMS 294c. Logo reversed out to illuminate white.
- ⑦ 1" Reveal painted black.
- ⑧ Fabricated aluminum cap structure, painted to match building MPB7197.
- ⑨ Aluminum Framed Base, Clad with Cement Board, Brick Veneer, and Grout to match existing.

**GC to provide 277V / 20A circuit with stubout within 3 feet of sign location.**

Font: Frutiger Condensed Bold



Expansion Project 2017

Date: 09/22/17

Revised: 04/01/19 - AJS

Drawn by: AJS

Scale: As Noted in Drawing

File Name: Loc 08.ai

File Folder: P> Parkwest Medical Center>Parkwest Expansion 2017> Shop Drawing> Exterior

Project Manager: CSR

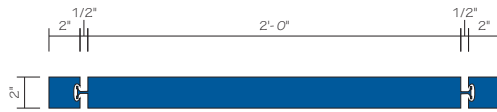
Sign Type: PVD  
Location: 08

New Illuminated Primary Vehicle Directional - Exterior



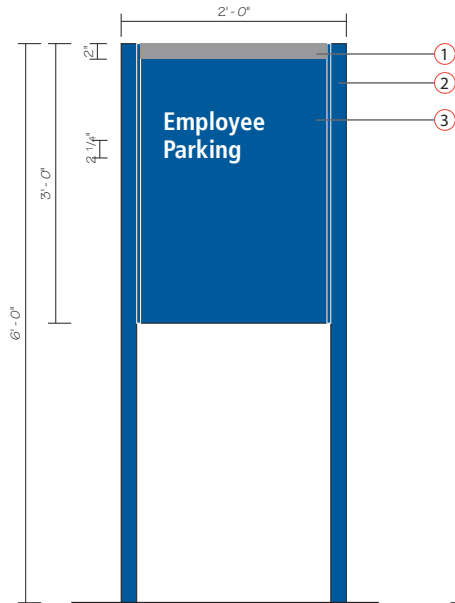
1301 Antioch Pike  
Nashville, TN 37211  
p. 615-885-2900  
f. 615-885-2989

This design is being submitted for use as a product being manufactured for you by Signcraft, Inc. It is not to be reproduced, copied or manufactured by you or given to any other manufacturer without written permission from Signcraft, Inc. Unauthorized use is subject to design charge and will include any collection fees.

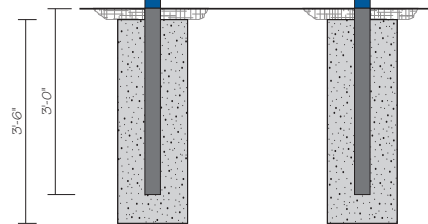


Plan View  
Scale: 1 1/2" = 1' - 0"

**NO EXISTING SIGNAGE  
NEW CONSTRUCTION**



Front View - Side A  
Scale: 3/4" = 1' - 0"



Front View - Side B  
Scale: 3/4" = 1' - 0"

**NOTES:**

- ① Gray Stripe painted to match PMS Cool Gray 7c.
- ② Charleston #225 Posts with reveal, painted to match PMS 294c.
- ③ Charleston frame and aluminum faces painted to match PMS 294c with white reflective vinyl graphics.

Font: Frutiger Condensed Bold



Expansion Project 2017

Date: 09/22/17

Revised: 04/01/19 - AJS

Drawn by: AJS

Scale: As Noted in Drawing

File Name: Loc 09.ai

File Folder: P> Parkwest Medical Center>Parkwest Expansion 2017> Shop Drawing> Exterior

Project Manager: CSR

Sign Type: **SPP**

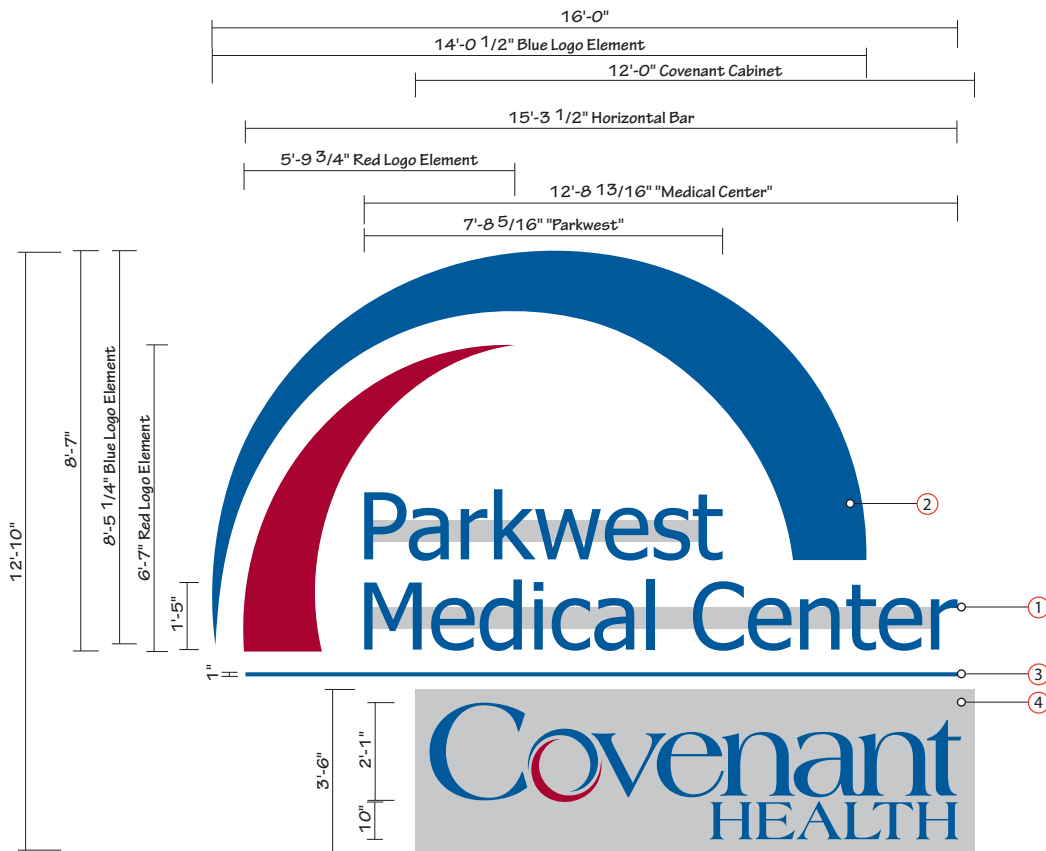
Location: **09**

*New Small Post & Panel Directional - Exterior*



1301 Antioch Pike  
Nashville, TN 37211  
p. 615-885-2900  
f. 615-885-2989

This design is being submitted for use as a product being manufactured for you by Signcraft, Inc. It is not to be reproduced, copied or manufactured by you or given to any other manufacturer without written permission from Signcraft, Inc. Unauthorized use is subject to design charge and will include any collection fees.



Front View

Scale: 3/8" = 1' - 0"

205 Sq.Ft

**NO EXISTING SIGNAGE  
NEW CONSTRUCTION**

**NOTES:**

- ① 5" deep LED illuminated channel letters on 5" narrow raceways. Channel letters painted to match PMS 294C Dark Blue with perforated vinyl to match PMS 294C. Letters will illuminate White. Raceways painted to match building color - **TBD**.
- ② 9" Deep LED Illuminated Logo Elements. Translucent Flex Faces to match PMS 294C and PMS 201C Red.
- ③ 1" Aluminum Square Tubing Bar with capped ends, painted to match PMS 294c Dark Blue
- ④ 9" Deep Fabricated Aluminum cabinet, painted to match building. Push through logo with perforated film on face to match PMS 294C and PMS 201C Red. Logo will illuminate White

**GC to provide electrical one 20amp/120V Circuit with stub outs as shown for power connection.**

**GC to provide 3/4" thick plywood blocking for securing sign**



Expansion Project 2017

Date: 10/06/17

Revised: 04/01/19 - RPB

Drawn by: AJS

Scale: As Noted

File Name: Loc 10\_2.ai

File Folder: P> Parkwest Medical  
Center>Parkwest  
Expansion 2017>  
Shop Drawing>  
Exterior

Project Manager: CSR

Sign Type: **CLR**

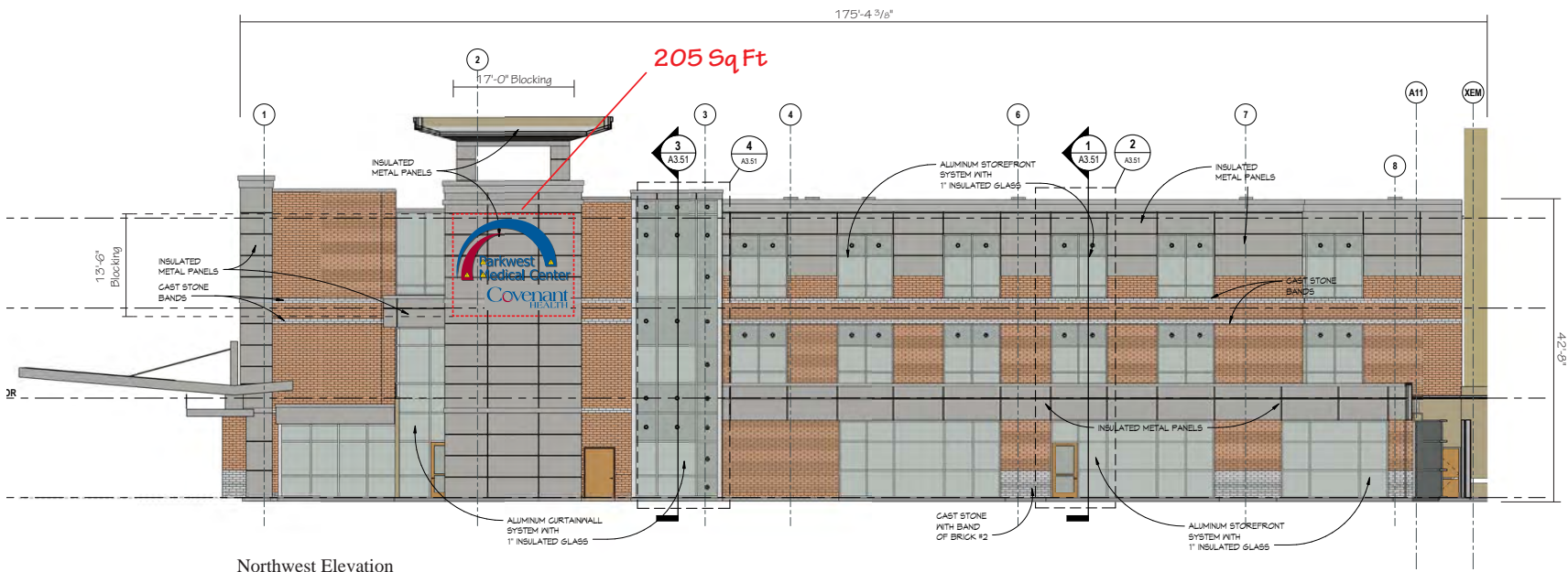
Location: **10**

*New Illuminated Channel Letters  
and Logo*



1301 Antioch Pike  
Nashville, TN 37211  
p. 615-885-2900  
f. 615-885-2989

This design is being submitted for use as a product being manufactured for you by Signcraft, Inc. It is not to be reproduced, copied or manufactured by you or given to any other manufacturer without written permission from Signcraft, Inc. Unauthorized use is subject to design charge and will include any collection fees.



Northwest Elevation

Scale: 1/16" = 1' - 0"



Expansion Project 2017

Date: 10/06/17

Revised: 04/01/19 - RPB

Drawn by: AJS

Scale: As Noted

File Name: Loc 10\_2.ai

P> Parkwest Medical  
Center>Parkwest  
Expansion 2017>  
Shop Drawing>  
Exterior

Project Manager: CSR

Sign Type: **CLR**

Location: **10**

New Illuminated Channel Letters  
and Logo



1301 Antioch Pike  
Nashville, TN 37211  
p. 615-885-2900  
f. 615-885-2989

This design is being submitted for use as a product being manufactured for you by Signcraft, Inc. It is not to be reproduced, copied or manufactured by you or given to any other manufacturer without written permission from Signcraft, Inc. Unauthorized use is subject to design charge and will include any collection fees.



Expansion Project 2017

Date: 09/15/17

Revised: 04/01/19 - RPB

Drawn by: KEH

Scale: As Noted in Drawing

File Name: Loc 11.ai

File Folder: P> Parkwest Medical  
Center>Parkwest  
Expansion 2017>  
Shop Drawing>  
Exterior

Project Manager: CSR

Sign Type: **CLR**

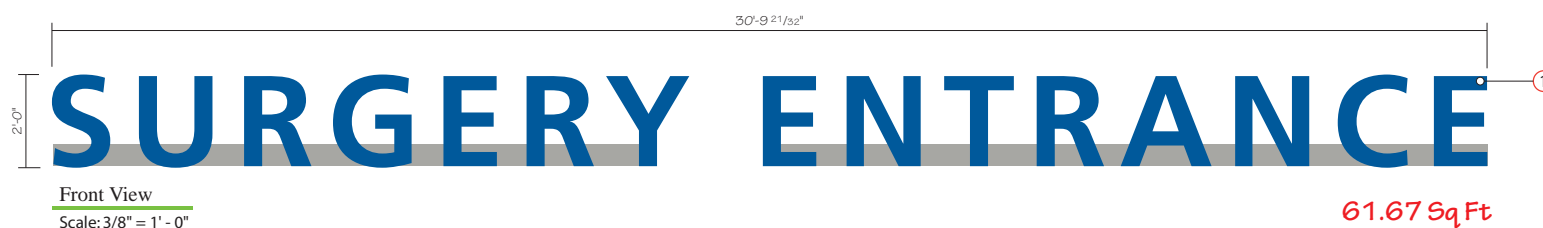
Location: **11**

*New Illuminated Channel Letters  
on Raceway - Exterior*



1301 Antioch Pike  
Nashville, TN 37211  
p. 615-885-2900  
f. 615-885-2989

This design is being submitted for use as a product being manufactured for you by Signcraft, Inc. It is not to be reproduced, copied or manufactured by you or given to any other manufacturer without written permission from Signcraft, Inc. Unauthorized use is subject to design charge and will include any collection fees.



Front View  
Scale: 3/8" = 1' - 0"

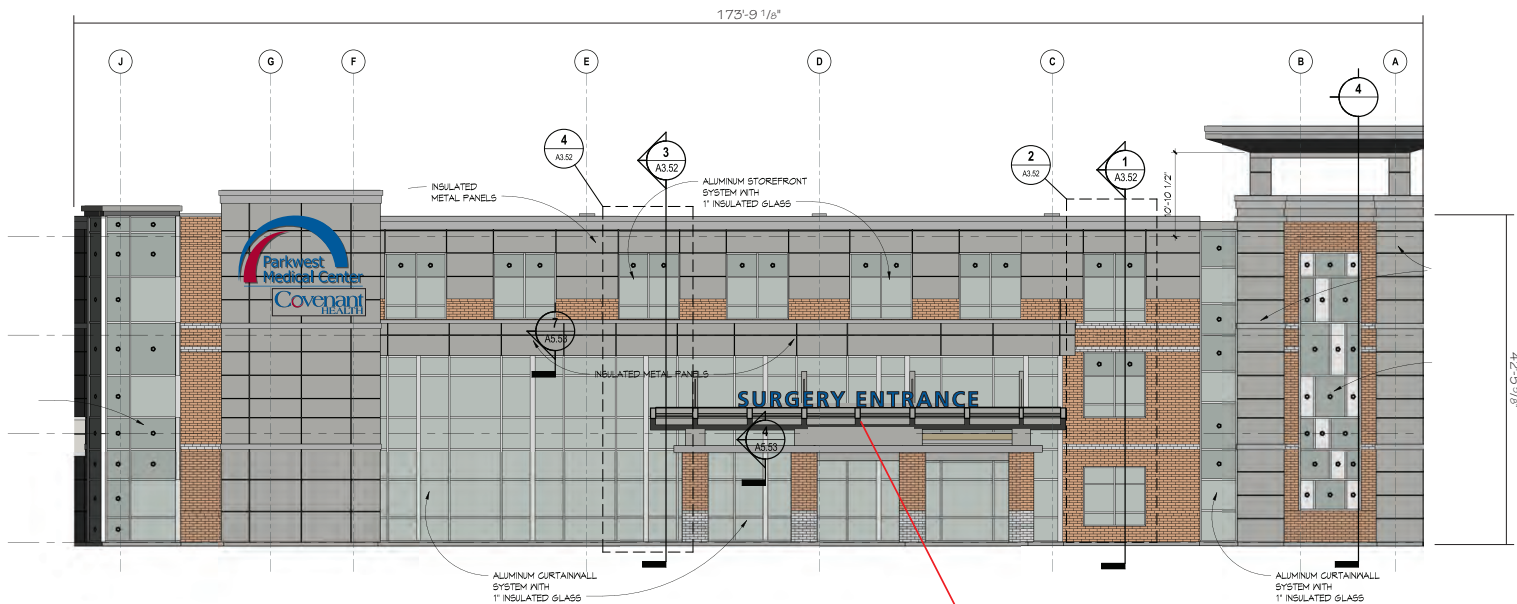
**NO EXISTING SIGNAGE  
NEW CONSTRUCTION**

NOTES:

① 5" deep illuminated channel letters mounted to raceway. Channel letters painted to match PMS 294C Blue with perforated vinyl painted to match PMS 294C Blue for Blue appearance by day with White illumination at night.

Raceway painted to match - **TBD**.

Mounting - **TBD**.



Northeast Elevation  
Scale: 1/16" = 1' - 0"

61.67 Sq Ft



Expansion Project 2017

Date: 09/15/17

Revised: 04/01/19 - RPB

Drawn by: KEH

Scale: As Noted in Drawing

File Name: Loc 11.ai

File Folder: P> Parkwest Medical  
Center>Parkwest  
Expansion 2017>  
Shop Drawing>  
Exterior

Project Manager: CSR

Sign Type: **CLR**

Location: **11**

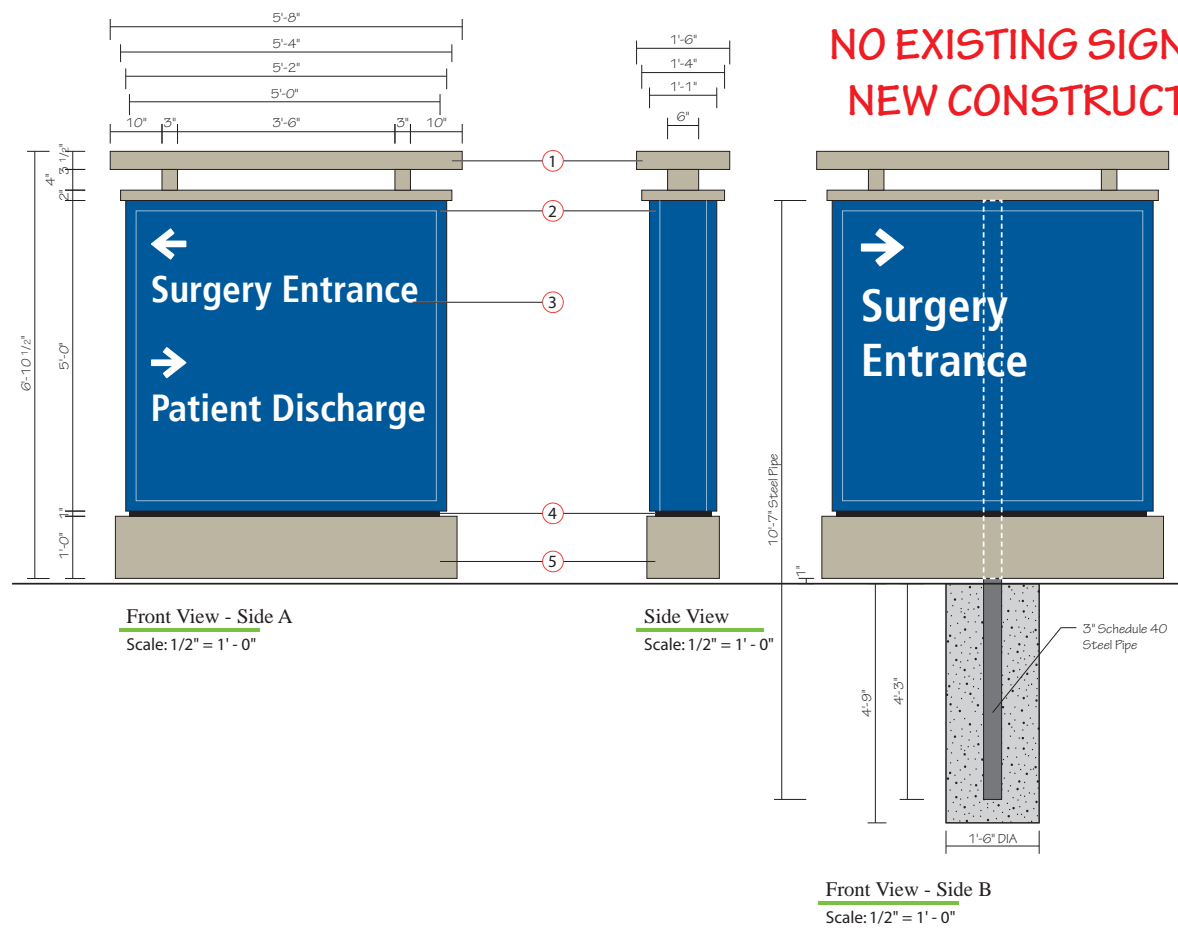
New Illuminated Channel Letters  
on Raceway - Exterior



1301 Antioch Pike  
Nashville, TN 37211  
p. 615-885-2900  
f. 615-885-2989

This design is being submitted for use as a product being manufactured for you by Signcraft, Inc. It is not to be reproduced, copied or manufactured by you or given to any other manufacturer without written permission from Signcraft, Inc. Unauthorized use is subject to design charge and will include any collection fees.





**NOTES:**

- ① Fabricated Aluminum Structure, painted to match building MPB7 197. White LED Up Lighting in bottom of structure to illuminate bottom of top part of structure.
- ② 13" Deep fabricated aluminum LED illuminated cabinet sign with 2" retainers. Cabinet to be painted to match PMS 294c.
- ③ 3/16" Translucent white polycarbonate faces with opaque vinyl to match PMS 294c. Letters and arrows reversed out to illuminate white.
- ④ 1" Reveal painted black.
- ⑤ Fabricated aluminum skirt, painted to match building MPB7 197.

GC to provide 277V / 20A circuit with stubout within 3 feet of sign location.

Font: Frutiger Condensed Bold



Expansion Project 2017

Date: 09/22/17

Revised: 04/01/19 - AJS

Drawn by: AJS

Scale: As Noted in Drawing

File Name: Loc 12.ai

File Folder: P> Parkwest Medical  
Center>Parkwest  
Expansion 2017>  
Shop Drawing>  
Exterior

Project Manager: CSR

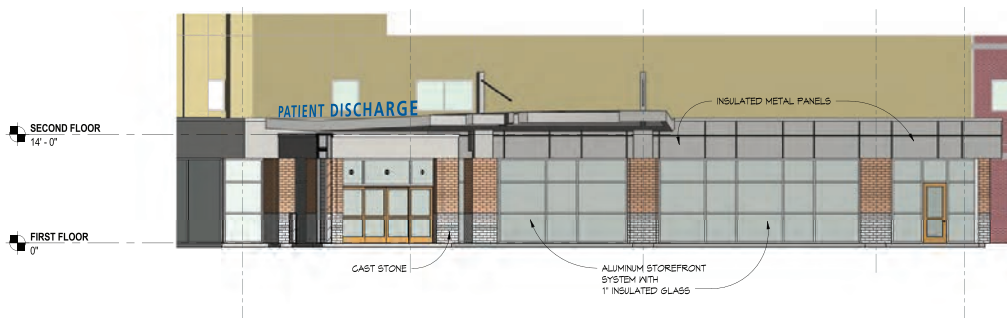
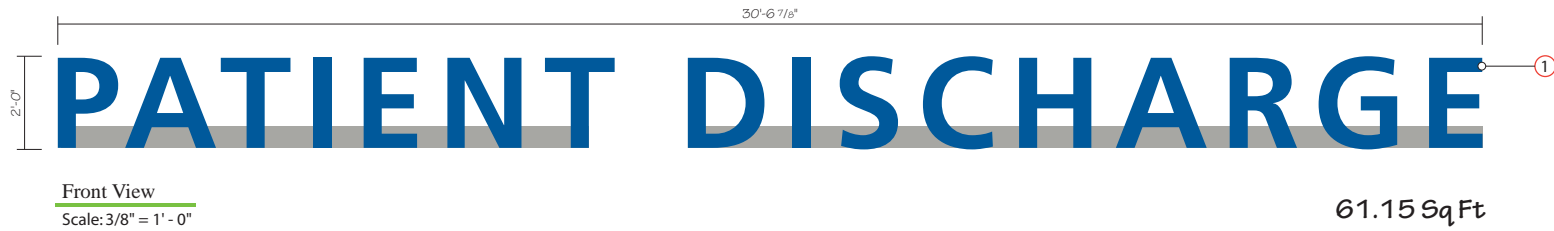
Sign Type: **SVD**  
Location: **12**

*New Small Vehicle Directional  
Illuminated - Exterior*



1301 Antioch Pike  
Nashville, TN 37211  
p. 615-885-2900  
f. 615-885-2989

This design is being submitted for use as a product being manufactured for you by Signcraft, Inc. It is not to be reproduced, copied or manufactured by you or given to any other manufacturer without written permission from Signcraft, Inc. Unauthorized use is subject to design charge and will include any collection fees.



North Elevation - Recovery Area  
Scale: 1/16" = 1' - 0"

**NO EXISTING SIGNAGE  
NEW CONSTRUCTION**

**NOTES:**

- ① 5" deep illuminated channel letters mounted to raceway. Channel letters painted to match PMS 294C Blue with perforated vinyl painted to match PMS 294C Blue for Blue appearance by day with White illumination at night.

Raceway painted to match - TBD.

Mounting - TBD.

**GC to provide electrical one 20amp/120V Circuit with stub out for power connection.**



Expansion Project 2017

Date: 09/18/17

Revised: 04/01/19 - RPB

Drawn by: KEH

Scale: As Noted in Drawing

File Name: Loc 14.ai

File Folder: P> Parkwest Medical  
Center>Parkwest  
Expansion 2017>  
Shop Drawing>  
Exterior

Project Manager: CSR

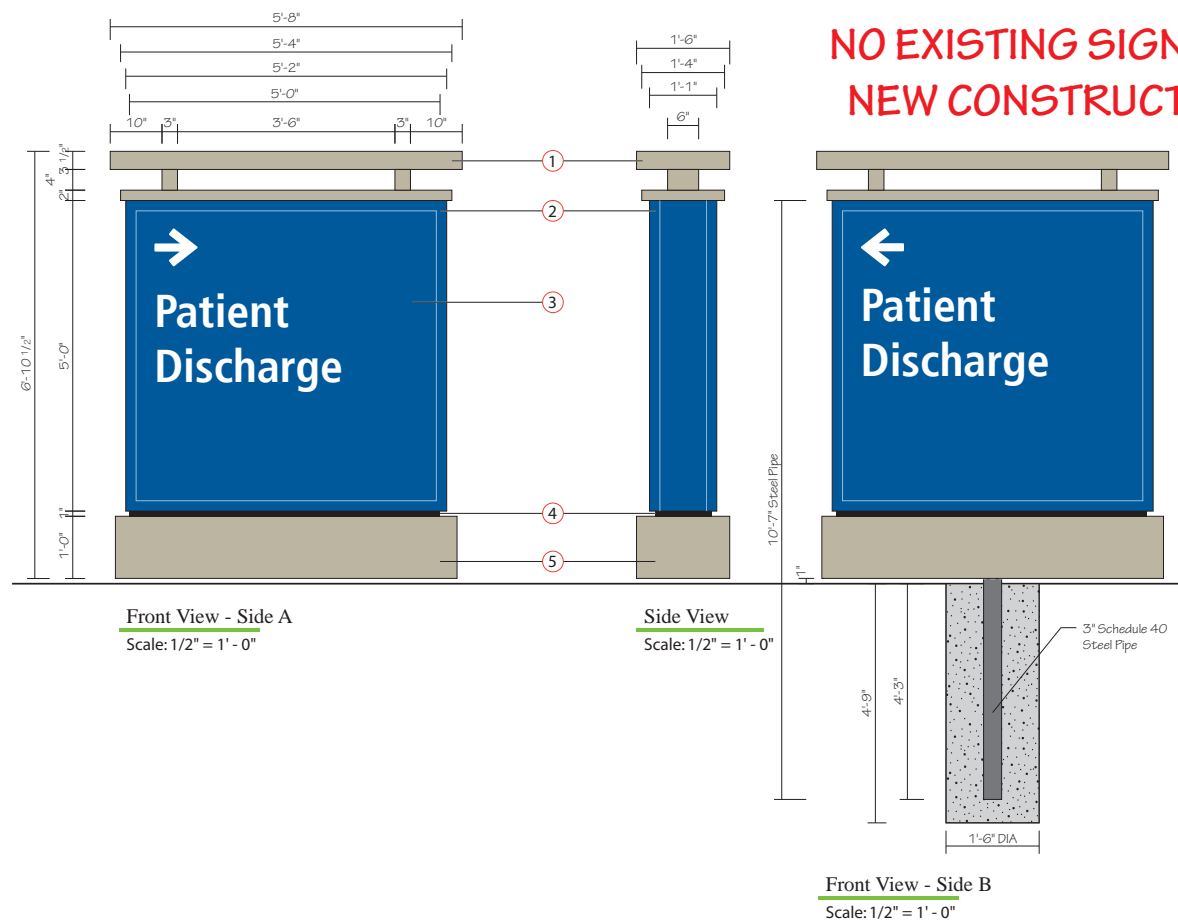
Sign Type: **CLR**

Location: **14**  
New Illuminated Channel Letters  
on Raceway - Exterior



1301 Antioch Pike  
Nashville, TN 37211  
p. 615-885-2900  
f. 615-885-2989

This design is being submitted for use as a product being manufactured for you by Signcraft, Inc. It is not to be reproduced, copied or manufactured by you or given to any other manufacturer without written permission from Signcraft, Inc. Unauthorized use is subject to design charge and will include any collection fees.



- NOTES:**
- ① Fabricated Aluminum Structure, painted to match building MPB7197. White LED Up Lighting in bottom of structure to illuminate bottom of top part of structure.
  - ② 13" Deep fabricated aluminum LED illuminated cabinet sign with 2" retainers. Cabinet to be painted to match PMS 294c.
  - ③ 3/16" Translucent white polycarbonate faces with opaque vinyl to match PMS 294c. Letters and arrows reversed out to illuminate white.
  - ④ 1" Reveal painted black.
  - ⑤ Fabricated aluminum skirt, painted to match building MPB7197.
- GC to provide 277V / 20A circuit with stubout within 3 feet of sign location.
- Font: Frutiger Condensed Bold



Expansion Project 2017

Date: 09/22/17  
 Revised: 04/01/19 - AJS  
 Drawn by: AJS  
 Scale: As Noted in Drawing

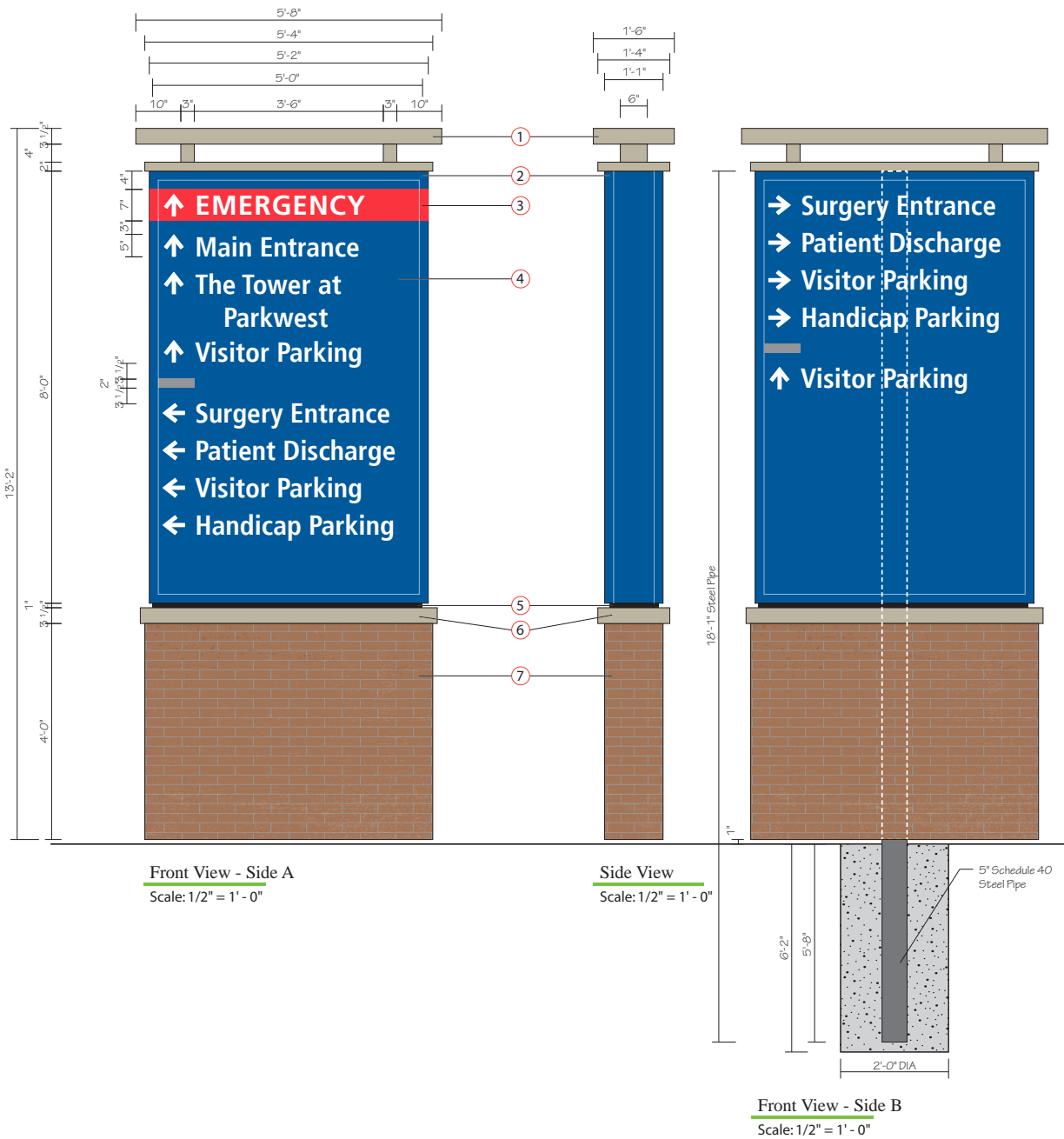
File Name: Loc 16.ai  
 File Folder: P> Parkwest Medical  
 Center>Parkwest  
 Expansion 2017>  
 Shop Drawing>  
 Exterior

Project Manager: CSR

Sign Type: **SVD**  
 Location: **16**  
 New Illuminated Small  
 Vehicle Directional - Exterior



This design is being submitted for use as a product being manufactured for you by Signcraft, Inc. It is not to be reproduced, copied or manufactured by you or given to any other manufacturer without written permission from Signcraft, Inc. Unauthorized use is subject to design charge and will include any collection fees.



**NO EXISTING SIGNAGE  
NEW CONSTRUCTION**

**NOTES:**

- ① Fabricated Aluminum Structure, painted to match building MPB7 197. White LED Up Lighting in bottom of structure to illuminate bottom of top part of structure.
- ② 13" Deep fabricated aluminum LED illuminated cabinet sign with 2" retainers. Cabinet to be painted to match PMS 294c.
- ③ Paint on cabinet to match PMS 200c.
- ④ 3/16" Translucent white polycarbonate faces with opaque vinyl to match PMS 294c, translucent red vinyl to match PMS 200c. Letters and arrows reversed out to illuminate white, gray bar to match PMS Cool Cray 7c.
- ⑤ 1" Reveal painted black.
- ⑥ Fabricated aluminum brick cap structure, painted to match building MPB7 197.
- ⑦ Aluminum Framed Base, Clad with Cement Board, Brick Veneer, and Grout to match existing.

GC to provide 277V / 20A circuit with stubout within 3 feet of sign location.

Font: Frutiger Condensed Bold



Expansion Project 2017

Date: 09/22/17

Revised: 04/01/19 - AJS

Drawn by: AJS

Scale: As Noted in Drawing

File Name: Loc 17.ai

File Folder: P> Parkwest Medical Expansion 2017> Shop Drawing> Exterior

Project Manager: CSR

Sign Type: PVD

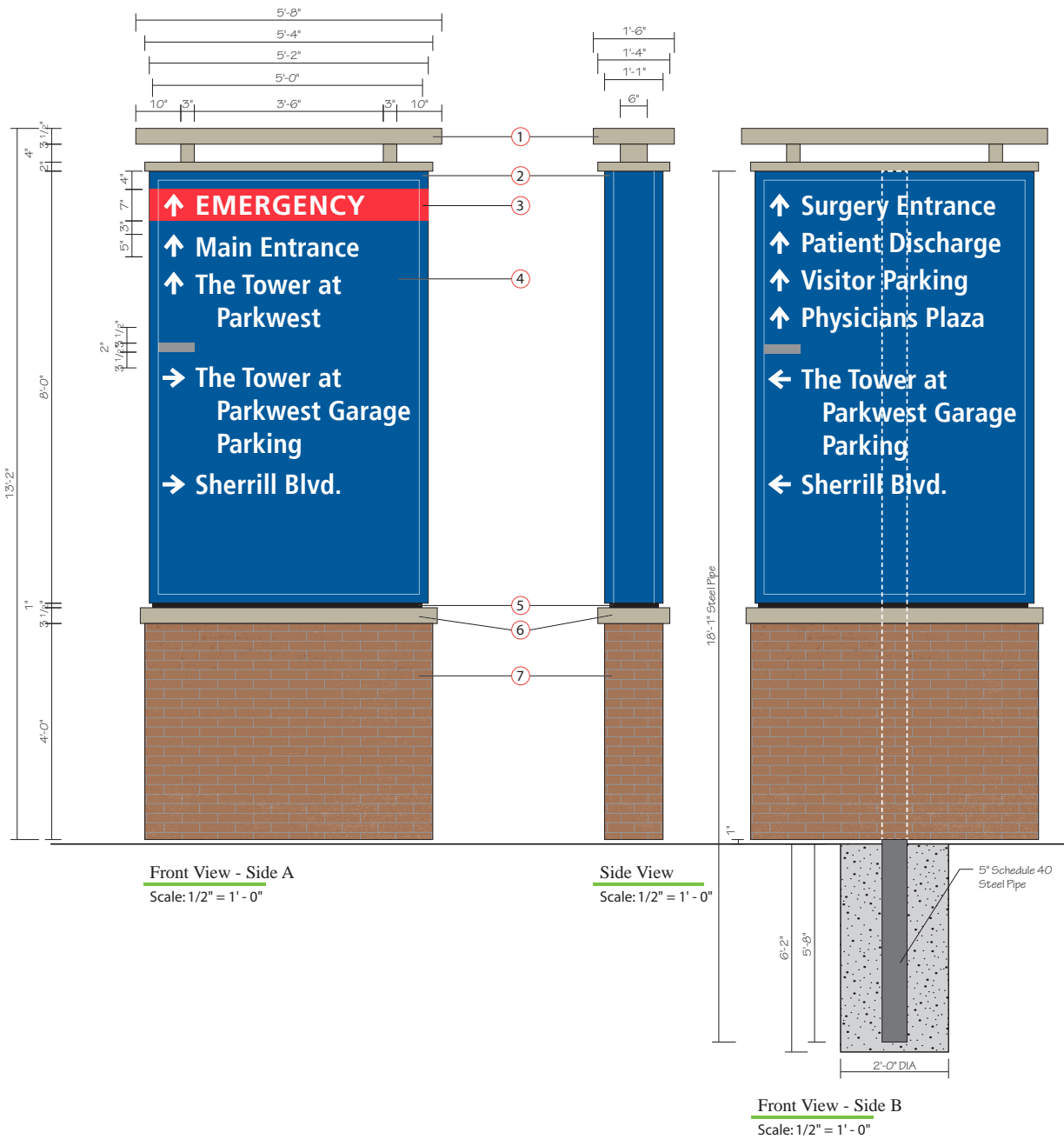
Location: 17

New Illuminated Primary Vehicle Directional



1301 Antioch Pike  
Nashville, TN 37211  
p. 615-885-2900  
f. 615-885-2989

This design is being submitted for use as a product being manufactured for you by Signcraft, Inc. It is not to be reproduced, copied or manufactured by you or given to any other manufacturer without written permission from Signcraft, Inc. Unauthorized use is subject to design charge and will include any collection fees.



**NO EXISTING SIGNAGE  
NEW CONSTRUCTION**

**NOTES:**

- ① Fabricated Aluminum Structure, painted to match building MPB7 197. White LED Up Lighting in bottom of structure to illuminate bottom of top part of structure.
- ② 13" Deep fabricated aluminum LED illuminated cabinet sign with 2" retainers. Cabinet to be painted to match PMS 294c.
- ③ Paint on cabinet to match PMS 200c.
- ④ 3/16" Translucent white polycarbonate faces with opaque vinyl to match PMS 294c, translucent red vinyl to match PMS 200c. Letters and arrows reversed out to illuminate white, gray bar to match PMS Cool Cray 7c.
- ⑤ 1" Reveal painted black.
- ⑥ Fabricated aluminum brick cap structure, painted to match building MPB7 197.
- ⑦ Aluminum Framed Base, Clad with Cement Board, Brick Veneer, and Grout to match existing.

GC to provide 277V / 20A circuit with stubout within 3 feet of sign location.

Font: Frutiger Condensed Bold



Expansion Project 2017

Date: 09/22/17

Revised: 04/01/19 - AJS

Drawn by: AJS

Scale: As Noted in Drawing

File Name: Loc 18.ai

File Folder: P> Parkwest Medical  
Center>Parkwest  
Expansion 2017>  
Shop Drawing>  
Exterior

Project Manager: CSR

Sign Type: PVD

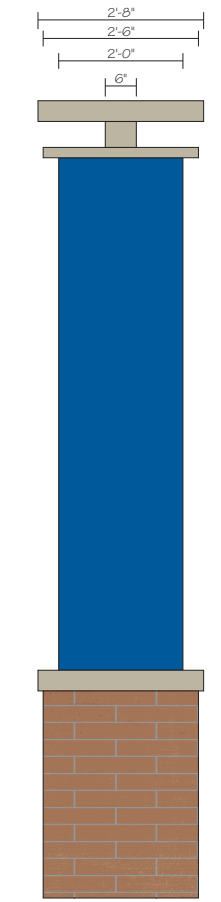
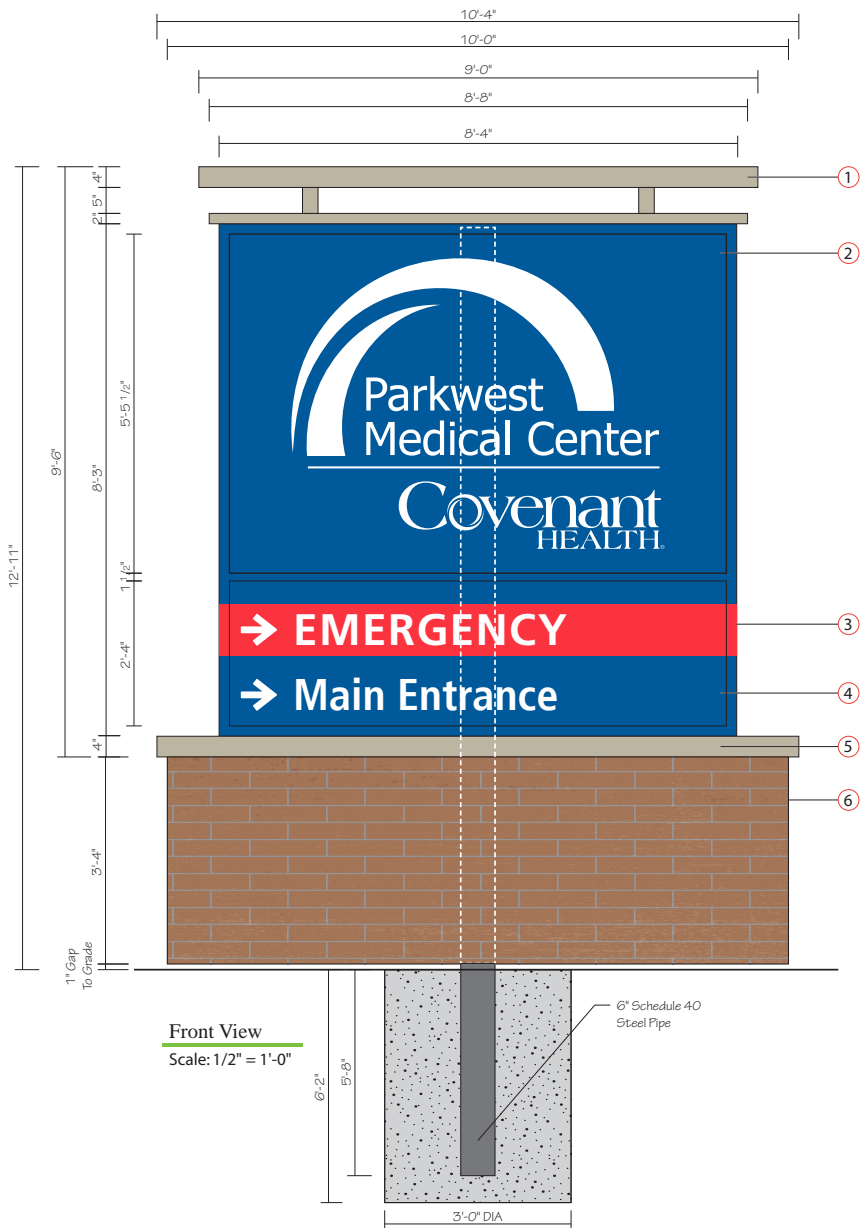
Location: 18

New Illuminated  
Primary Vehicle Directional



1301 Antioch Pike  
Nashville, TN 37211  
p. 615-885-2900  
f. 615-885-2989

This design is being submitted for use as a product being manufactured for you by Signcraft, Inc. It is not to be reproduced, copied or manufactured by you or given to any other manufacturer without written permission from Signcraft, Inc. Unauthorized use is subject to design charge and will include any collection fees.



**NOTES:**

- ① Fabricated Aluminum Structure, painted to match building MP87197. White LED Up Lighting in bottom of structure to illuminate bottom of top part of structure.
- ② 24" Deep fabricated aluminum LED illuminated cabinet sign with 2" retainers & 1 1/2" Divider Bar. Cabinet to be painted to match PMS 294c.
- ③ Paint on cabinet to match PMS 200c.
- ④ 3/16" Translucent white polycarbonate faces with opaque vinyl to match PMS 294c, translucent red vinyl to match PMS 200c. Letters and arrows reversed out to illuminate white.
- ⑤ Fabricated aluminum brick cap structure, painted to match building MP 87197.
- ⑥ Aluminum Framed Base, Clad with Cement Board, Brick Veneer, and Grout to match existing.

Font: Frutiger Condensed Bold



Expansion Project 2017

Date: 09/22/17

Revised: 04/05/19 - AJS

Drawn by: AJS

Scale: As Noted in Drawing

File Name: Loc 19.ai

File Folder: P> Parkwest Medical Center>Parkwest Expansion 2017> Shop Drawing> Exterior

Project Manager: CSR

Sign Type: **ICI**

Location: **19**

Existing Base & New Illuminated Campus Identifier



1301 Antioch Pike  
Nashville, TN 37211  
p. 615-885-2900  
f. 615-885-2989

This design is being submitted for use as a product being manufactured for you by Signcraft, Inc. It is not to be reproduced, copied or manufactured by you or given to any other manufacturer without written permission from Signcraft, Inc. Unauthorized use is subject to design charge and will include any collection fees.

EXISTING SIGNAGE



Side A



Side B

PROPOSED SIGNAGE



Side A



Side B



Expansion Project 2017

Date: 09/22/17

Revised: 03/14/19

Drawn by: AJS

Scale: As Noted in Drawing

File Name: Loc 19.ai

P> Parkwest Medical  
File Folder: Center>Parkwest  
Expansion 2017>  
Shop Drawing>  
Exterior

Project Manager: CSR

Sign Type: ICI

Location: 19

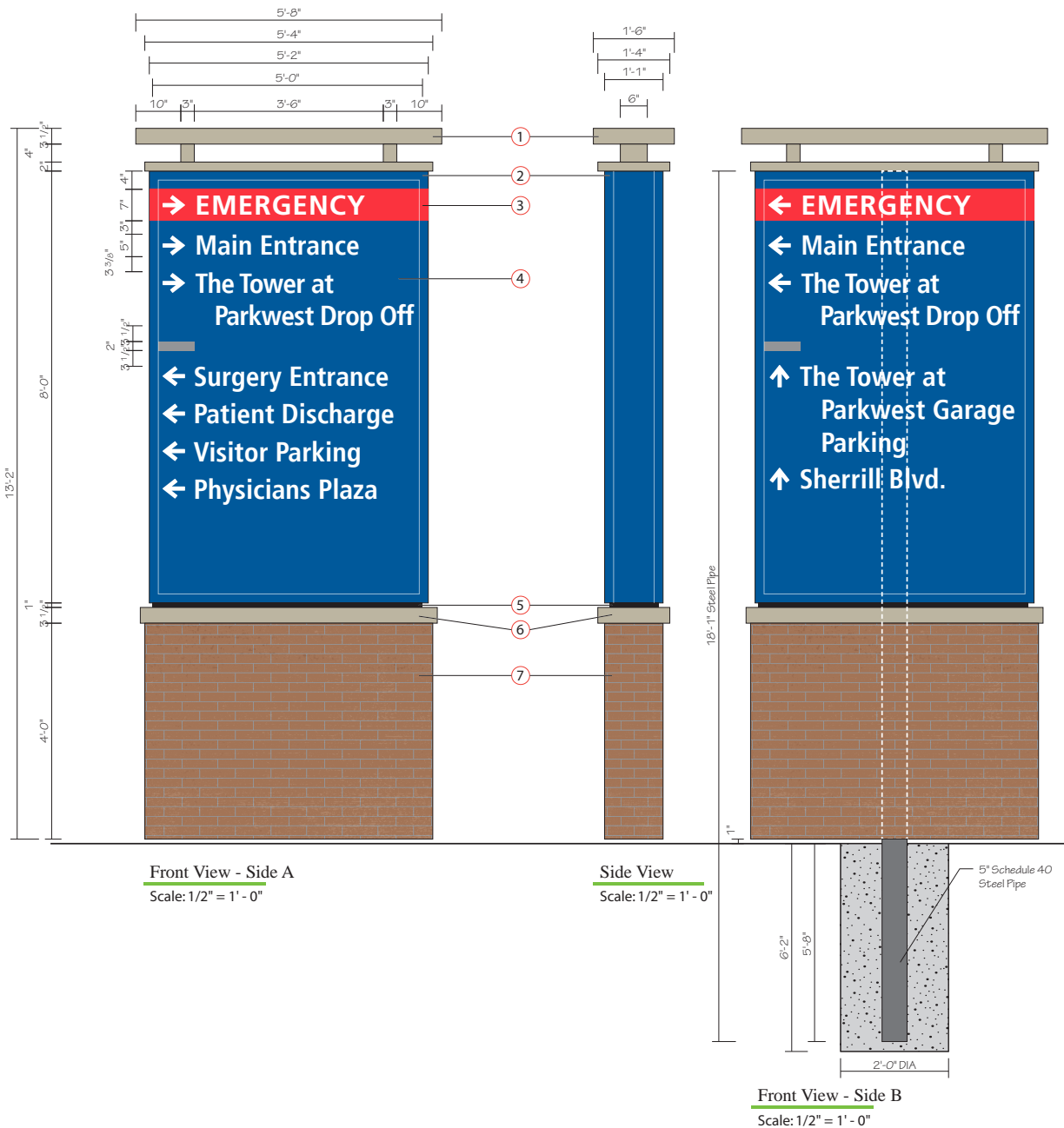
Existing Base & New Illuminated  
Campus Identifier



1301 Antioch Pike  
Nashville, TN 37211  
p. 615-885-2900  
f. 615-885-2989

This design is being submitted for use as a product being manufactured for you by Signcraft, Inc. It is not to be reproduced, copied or manufactured by you or given to any other manufacturer without written permission from Signcraft, Inc. Unauthorized use is subject to design charge and will include any collection fees.





Front View - Side A  
Scale: 1/2" = 1' - 0"

Side View  
Scale: 1/2" = 1' - 0"

Front View - Side B  
Scale: 1/2" = 1' - 0"

**NOTES:**

- ① Fabricated Aluminum Structure, painted to match building MPB7 197. White LED Up Lighting in bottom of structure to illuminate bottom of top part of structure.
- ② 13" Deep fabricated aluminum LED Illuminated cabinet sign with 2" retainers. Cabinet to be painted to match PMS 294c.
- ③ Paint on cabinet to match PMS 200c.
- ④ 3/16" Translucent white polycarbonate faces with opaque vinyl to match PMS 294c, translucent red vinyl to match PMS 200c. Letters and arrows reversed out to illuminate white. gray bar to match PMS Cool Cray 7c.
- ⑤ 1" Reveal painted black.
- ⑥ Fabricated aluminum brick cap structure, painted to match building MPB7 197.
- ⑦ Aluminum Framed Base, Clad with Cement Board, Brick Veneer, and Grout to match existing.

Font: Frutiger Condensed Bold



Expansion Project 2017

Date: 09/22/17

Revised: 04/01/19 - AJS

Drawn by: AJS

Scale: As Noted in Drawing

File Name: Loc 20.ai

File Folder: P> Parkwest Medical Center>Parkwest Expansion 2017> Shop Drawing> Exterior

Project Manager: CSR

Sign Type: PVD

Location: 20

Existing Base & New Illuminated Primary Vehicle Directional



1301 Antioch Pike  
Nashville, TN 37211  
p. 615-885-2900  
f. 615-885-2989

This design is being submitted for use as a product being manufactured for you by Signcraft, Inc. It is not to be reproduced, copied or manufactured by you or given to any other manufacturer without written permission from Signcraft, Inc. Unauthorized use is subject to design charge and will include any collection fees.

EXISTING SIGNAGE



Side A

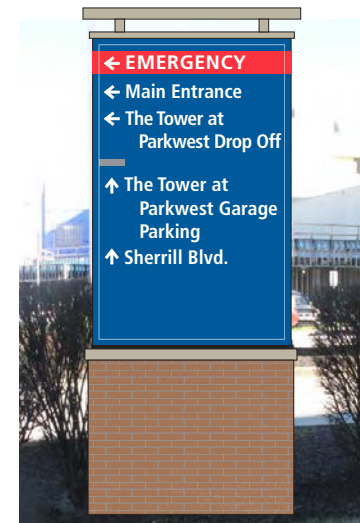


Side B

PROPOSED SIGNAGE



Side A



Side B



Expansion Project 2017

Date: 09/22/17

Revised: 04/08/19 RPB

Drawn by: AJS

Scale: As Noted in Drawing

File Name: Loc 20.ai

File Folder: P> Parkwest Medical Center>Parkwest Expansion 2017> Shop Drawing> Exterior

Project Manager: CSR

Sign Type: **PVD**

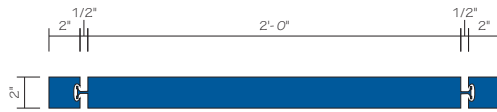
Location: **20**

*Existing Base & New Illuminated Primary Vehicle Directional*



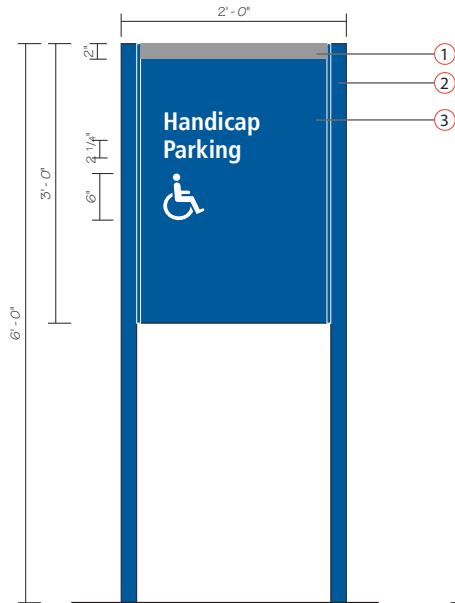
1301 Antioch Pike  
Nashville, TN 37211  
p. 615-885-2900  
f. 615-885-2989

This design is being submitted for use as a product being manufactured for you by Signcraft, Inc. It is not to be reproduced, copied or manufactured by you or given to any other manufacturer without written permission from Signcraft, Inc. Unauthorized use is subject to design charge and will include any collection fees.

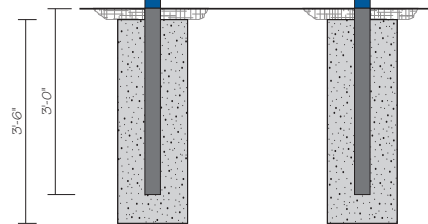


Plan View  
Scale: 1 1/2" = 1' - 0"

**NO EXISTING SIGNAGE  
NEW CONSTRUCTION**



Front View - Side A  
Scale: 3/4" = 1' - 0"



Front View - Side B  
Scale: 3/4" = 1' - 0"

**NOTES:**

- ① Gray Stripe Painted to match PMS Cool Gray 7c
- ② Charleston #225 Posts with reveal, painted to match PMS 294c.
- ③ Charleston frame and aluminum faces painted to match PMS 294c with white reflective vinyl graphics.

Font: Frutiger Condensed Bold



Expansion Project 2017

Date: 09/22/17

Revised: 04/01/19 - AJS

Drawn by: AJS

Scale: As Noted in Drawing

File Name: Loc 21.ai

File Folder: P> Parkwest Medical Center>Parkwest Expansion 2017> Shop Drawing> Exterior

Project Manager: CSR

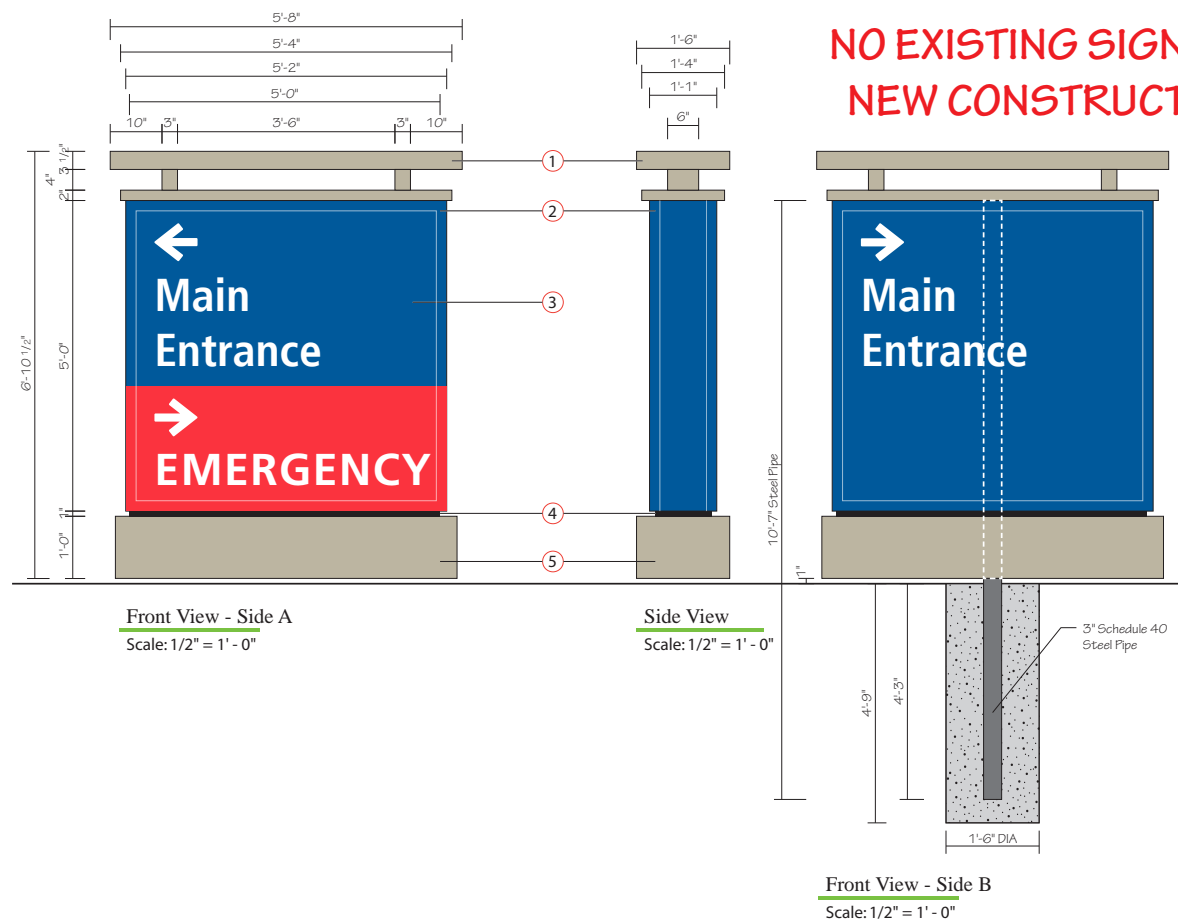
Sign Type: **SPP**  
Location: **21**

*New Small Post & Panel  
Directional - Exterior*



1301 Antioch Pike  
Nashville, TN 37211  
p. 615-885-2900  
f. 615-885-2989

This design is being submitted for use as a product being manufactured for you by Signcraft, Inc. It is not to be reproduced, copied or manufactured by you or given to any other manufacturer without written permission from Signcraft, Inc. Unauthorized use is subject to design charge and will include any collection fees.



- NOTES:**
- ① Fabricated Aluminum Structure, painted to match building MPB7 197. White LED Up Lighting in bottom of structure to illuminate bottom of top part of structure.
  - ② 13" Deep fabricated aluminum LED illuminated cabinet sign with 2" retainers. Cabinet to be painted to match PMS 294c.
  - ③ 3/16" Translucent white polycarbonate faces with opaque vinyl to match PMS 294c & translucent vinyl to match PMS 200c. Letters and arrows reversed out to illuminate white.
  - ④ 1" Reveal painted black.
  - ⑤ Fabricated aluminum skirt, painted to match building MPB7 197.
- GC to provide 277V / 20A circuit with stubout within 3 feet of sign location.**
- Font: Frutiger Condensed Bold



Expansion Project 2017

Date: 09/22/17

Revised: 04/01/19 - AJS

Drawn by: AJS

Scale: As Noted in Drawing

File Name: Loc 22.ai

File Folder: P> Parkwest Medical Center>Parkwest Expansion 2017> Shop Drawing> Exterior

Project Manager: CSR

Sign Type: SVD  
Location: 22

New Non-Illuminated Small Vehicle Directional - Exterior



1301 Antioch Pike  
Nashville, TN 37211  
p. 615-885-2900  
f. 615-885-2989

This design is being submitted for use as a product being manufactured for you by Signcraft, Inc. It is not to be reproduced, copied or manufactured by you or given to any other manufacturer without written permission from Signcraft, Inc. Unauthorized use is subject to design charge and will include any collection fees.

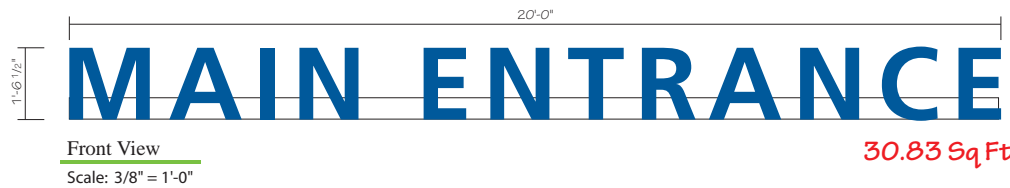
EXISTING CONDITIONS - NO SIGNAGE



PROPOSED SIGNAGE



Superimposed Photo  
Scale: NTS



NOTES:

- 1 5' deep illuminated channel letters mounted to Custom Curved raceway. Front of Raceway is 37'-6" Radius. Channel letters painted to match PMS 294C Blue with perforated vinyl painted to match PMS 294C Blue for Blue appearance by day with White illumination at night.

Raceway painted to match Canopy - TBD.

GC to provide electrical one 20amp/120V Circuit with stub out for power connection.



Expansion Project 2017

Date: 09/15/17

Revised: 04/01/19 - RPB

Drawn by: KEH

Scale: As Noted in Drawing

File Name: Loc 23.ai

File Folder: P> Parkwest Medical  
Center>Parkwest  
Expansion 2017>  
Shop Drawing>  
Exterior

Project Manager: CSR

Sign Type: CLR

Location: 23

New Illuminated Channel Letters  
on Raceway - Exterior



1301 Antioch Pike  
Nashville, TN 37211  
p. 615-885-2900  
f. 615-885-2989

This design is being submitted for use as a product being manufactured for you by Signcraft, Inc. It is not to be reproduced, copied or manufactured by you or given to any other manufacturer without written permission from Signcraft, Inc. Unauthorized use is subject to design charge and will include any collection fees.





Superimposed Photo  
Scale: NTS



Front View  
Scale: 1/4" = 1'-0"

94.5 Sq Ft



Expansion Project 2017

Date: 10/06/17

Revised: 04/01/19 - RPB

Drawn by: AJS

Scale: As Noted

File Name: Loc 24\_4.ai

File Folder: P> Parkwest Medical  
Center>Parkwest  
Expansion 2017>  
Shop Drawing>  
Exterior

Project Manager: CSR

Sign Type: CLR

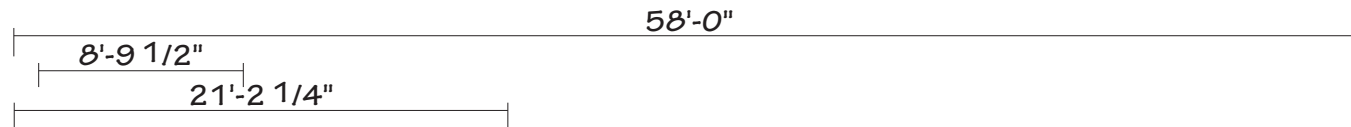
Location: 24

New Illuminated Channel Letters  
on Raceway - Exterior



1301 Antioch Pike  
Nashville, TN 37211  
p. 615-885-2900  
f. 615-885-2989

This design is being submitted for use as a product being manufactured for you by Signcraft, Inc. It is not to be reproduced, copied or manufactured by you or given to any other manufacturer without written permission from Signcraft, Inc. Unauthorized use is subject to design charge and will include any collection fees.



Front View  
Scale: 3/16" = 1'-0"

215 Sq Ft

GC to provide electrical one 20amp/120V Circuit with stub out for power connection Per Sign Location.

NOTES:

- ① 5" deep LED illuminated channel letters on 8" narrow raceways. Channel letters painted to match PMS 294C Dark Blue with perforated vinyl to match PMS 294C. Letters will illuminate white. Raceways painted to match building color - TBD.
- ② 9" Deep LED illuminated Logo Elements, Translucent Flex Faces to match PMS 294C and PMS 201C Red.
- ③ 9" Deep Fabricated Aluminum cabinet, painted to match building. Push through logo with perforated film on face to match PMS 294C and PMS 201C Red. Logo will illuminate white.

## EXISTING SIGNAGE



Existing Photo

Scale: NTS

## PROPOSED SIGNAGE



Superimposed Photo

Scale: NTS



Expansion Project 2017

Date: 10/06/17

Revised: 03/19/19

Drawn by: AJS

Scale: As Noted

File Name: Loc 24\_4.ai

File Folder: P> Parkwest Medical  
Center>Parkwest  
Expansion 2017>  
Shop Drawing>  
Exterior

Project Manager: CSR

Sign Type: **CLR**

Location: **24**

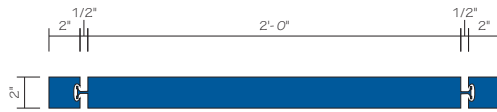
*New Illuminated Channel Letters  
on Raceway - Exterior*



1301 Antioch Pike  
Nashville, TN 37211  
p. 615-885-2900  
f. 615-885-2989

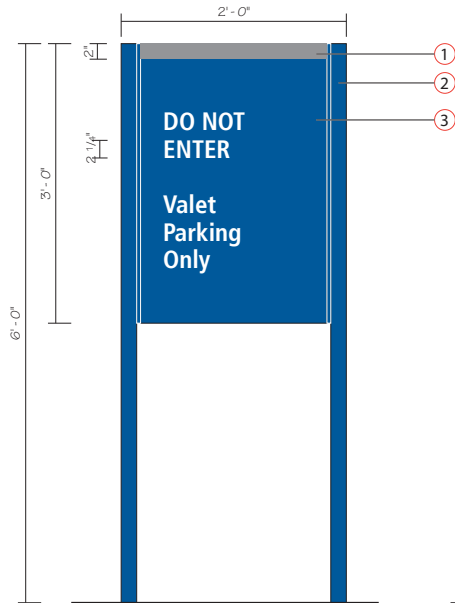
This design is being submitted for use as a product being manufactured for you by Signcraft, Inc. It is not to be reproduced, copied or manufactured by you or given to any other manufacturer without written permission from Signcraft, Inc. Unauthorized use is subject to design charge and will include any collection fees.



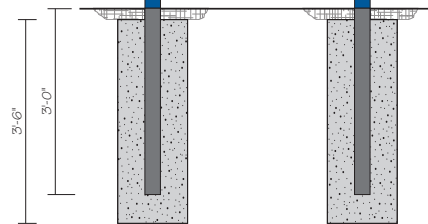


Plan View  
Scale: 1 1/2" = 1' - 0"

**NO EXISTING SIGNAGE  
NEW CONSTRUCTION**



Front View - Side A  
Scale: 3/4" = 1' - 0"



Front View - Side B  
Scale: 3/4" = 1' - 0"

**NOTES:**

- ① Gray Stripe Paintd to match PMS Cool Gray 7c
- ② Charleston #225 Posts with reveal, painted to match PMS 294c.
- ③ Charleston frame and aluminum faces painted to match PMS 294c with white reflective vinyl graphics.

Font: Frutiger Condensed Bold



Expansion Project 2017

Date: 09/22/17

Revised: 04/01/19 - AJS

Drawn by: AJS

Scale: As Noted in Drawing

File Name: Loc 25.ai

File Folder: P> Parkwest Medical Center>Parkwest Expansion 2017> Shop Drawing> Exterior

Project Manager: CSR

Sign Type: **SPP**

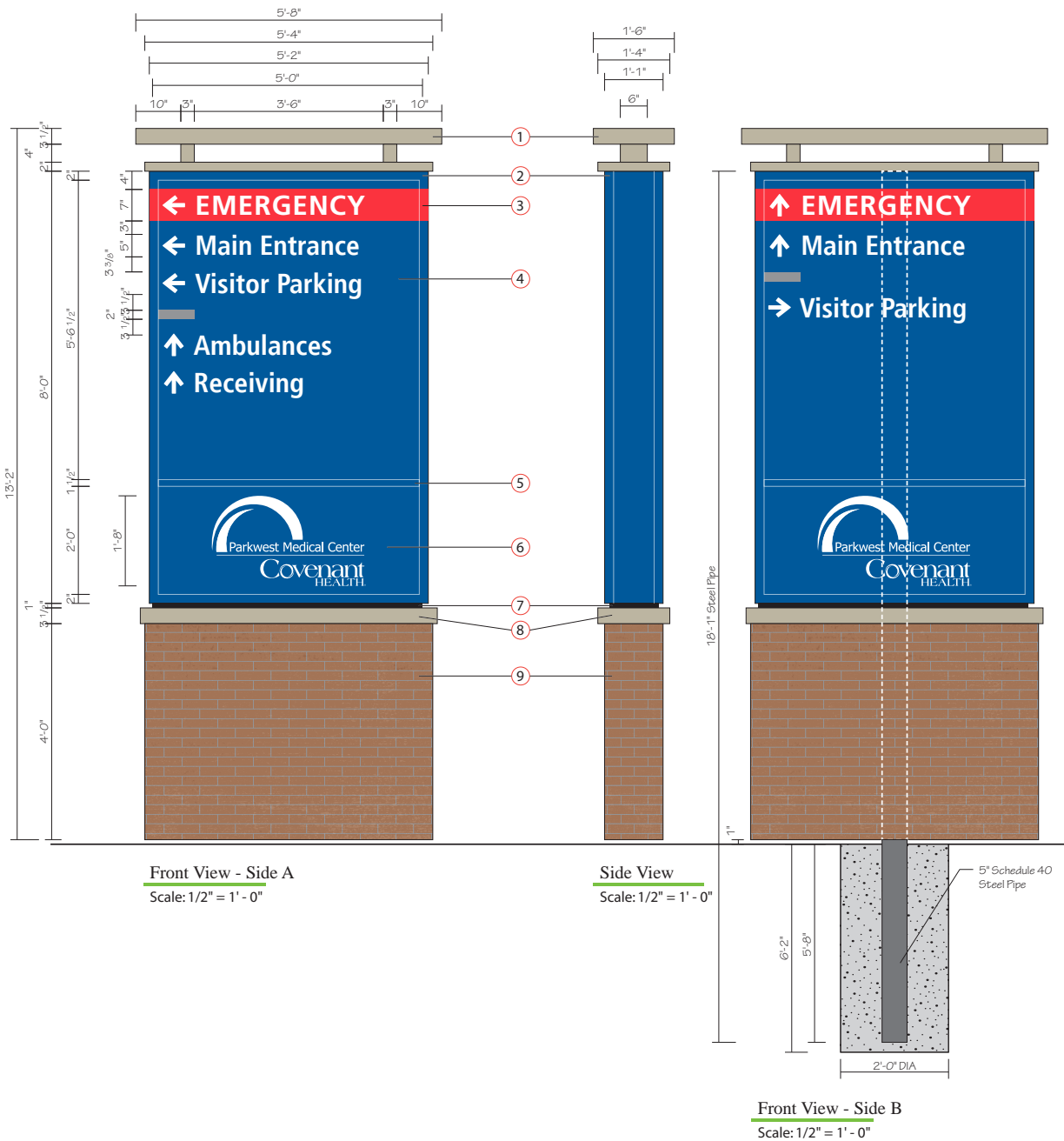
Location: **25**

*New Small Post & Panel  
Directional - Exterior*



1301 Antioch Pike  
Nashville, TN 37211  
p. 615-885-2900  
f. 615-885-2989

This design is being submitted for use as a product being manufactured for you by Signcraft, Inc. It is not to be reproduced, copied or manufactured by you or given to any other manufacturer without written permission from Signcraft, Inc. Unauthorized use is subject to design charge and will include any collection fees.



Front View - Side A  
Scale: 1/2" = 1' - 0"

Side View  
Scale: 1/2" = 1' - 0"

Front View - Side B  
Scale: 1/2" = 1' - 0"

**NOTES:**

- ① Fabricated Aluminum Structure, painted to match building MPB7197. White LED Up Lighting in bottom of structure to illuminate bottom of top part of structure.
- ② 13" Deep fabricated aluminum LED illuminated cabinet sign with 2" retainers. Cabinet to be painted to match PMS 294c.
- ③ Paint on cabinet to match PMS 200c.
- ④ 3/16" Translucent white polycarbonate faces with opaque vinyl to match PMS 294c, translucent red vinyl to match PMS 200c. Letters and arrows reversed out to illuminate white. gray bar to match PMS Cool Cray 7c.
- ⑤ 1 1/2" Divider painted to match PMS 294c.
- ⑥ 3/16" Translucent white polycarbonate faces with opaque vinyl to match PMS 294c. Logo reversed out to illuminate white.
- ⑦ 1" Reveal painted black.
- ⑧ Fabricated aluminum cap structure, painted to match building MPB7197.
- ⑨ Aluminum Framed Base, Clad with Cement Board, Brick Veneer, and Grout to match existing.

Font: Frutiger Condensed Bold



Expansion Project 2017

Date: 09/22/17

Revised: 04/01/19 - AJS

Drawn by: AJS

Scale: As Noted in Drawing

File Name: Loc 26.ai

File Folder: P> Parkwest Medical Center>Parkwest Expansion 2017> Shop Drawing> Exterior

Project Manager: CSR

Sign Type: PVD

Location: 26

Existing Base & New Illuminated Primary Vehicle Directional



1301 Antioch Pike  
Nashville, TN 37211  
p. 615-885-2900  
f. 615-885-2989

This design is being submitted for use as a product being manufactured for you by Signcraft, Inc. It is not to be reproduced, copied or manufactured by you or given to any other manufacturer without written permission from Signcraft, Inc. Unauthorized use is subject to design charge and will include any collection fees.

## EXISTING SIGNAGE

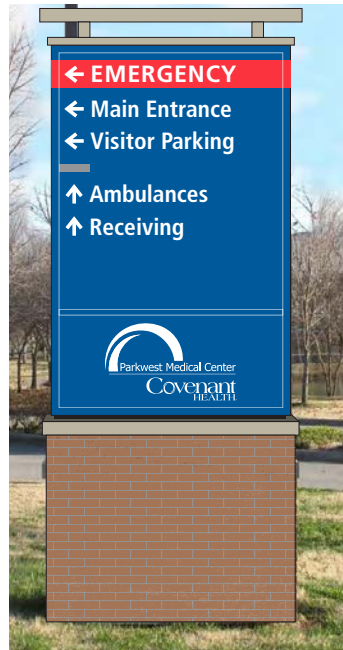


Side A



Side B

## PROPOSED SIGNAGE



Side A



Side B



Expansion Project 2017

Date: 09/22/17

Revised: 04/08/19 RPB

Drawn by: AJS

Scale: As Noted in Drawing

File Name: Loc 26.ai

File Folder: P> Parkwest Medical Center>Parkwest Expansion 2017> Shop Drawing> Exterior

Project Manager: CSR

Sign Type: **PVD**

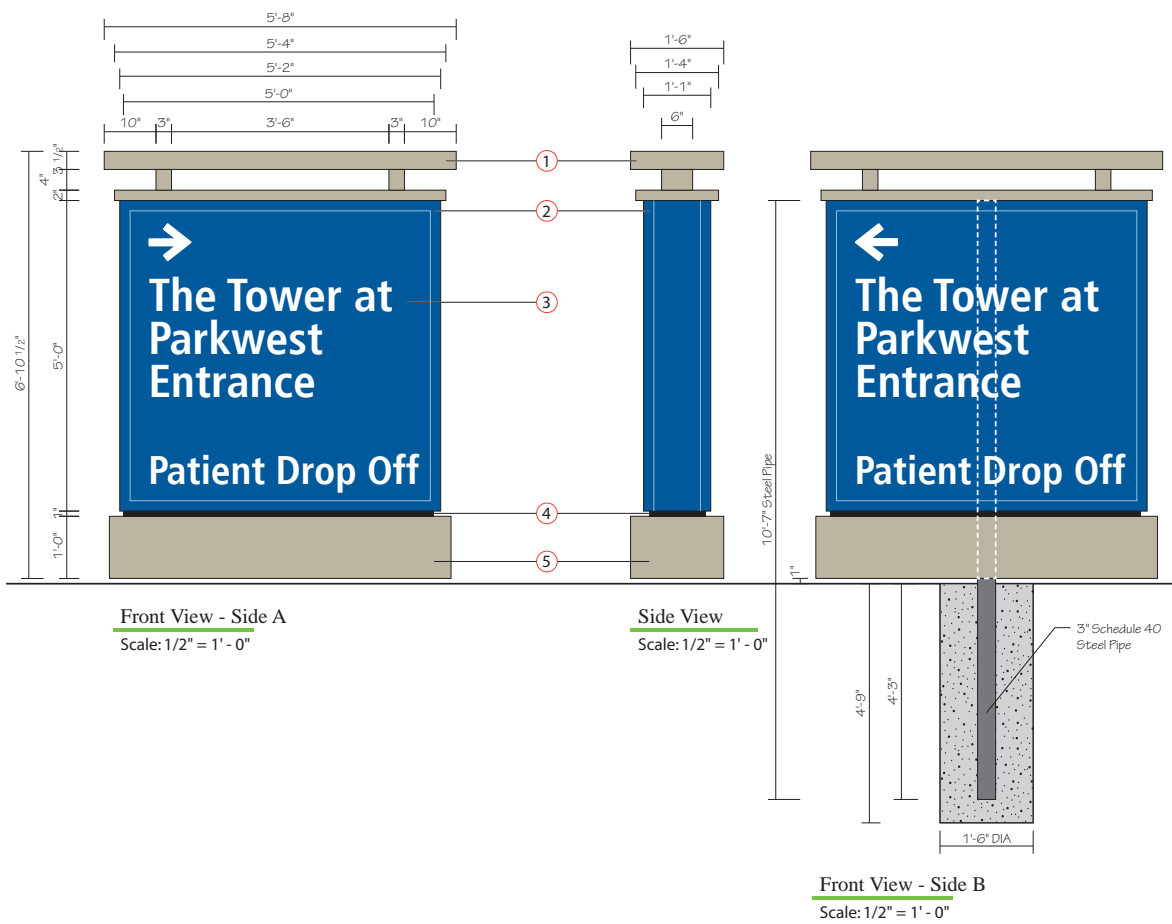
Location: **26**

*Existing Base & New Illuminated Primary Vehicle Directional*



1301 Antioch Pike  
Nashville, TN 37211  
p. 615-885-2900  
f. 615-885-2989

This design is being submitted for use as a product being manufactured for you by Signcraft, Inc. It is not to be reproduced, copied or manufactured by you or given to any other manufacturer without written permission from Signcraft, Inc. Unauthorized use is subject to design charge and will include any collection fees.



Existing Sign to be removed  
and post cut to grade.

New post and footing.

**NOTES:**

- ① Fabricated Aluminum Structure, painted to match building MPB7 197. White LED Up Lighting in bottom of structure to illuminate bottom of top part of structure.
- ② 13" Deep fabricated aluminum LED illuminated cabinet sign with 2" retainers. Cabinet to be painted to match PMS 294c.
- ③ 3/16" Translucent white polycarbonate faces with opaque vinyl to match PMS 294c. Letters and arrows reversed out to illuminate white.
- ④ 1" Reveal painted black.
- ⑤ Fabricated aluminum skirt, painted to match building MPB7 197.

Font: Frutiger Condensed Bold



Expansion Project 2017

Date: 10/19/17

Revised: 04/01/19 - AJS

Drawn by: AJS

Scale: As Noted in Drawing

File Name: Loc 27.ai

File Folder: P> Parkwest Medical  
Center>Parkwest  
Expansion 2017>  
Shop Drawing>  
Exterior

Project Manager: CSR

Sign Type: SVD  
Location: 27

New Non-Illuminated Small  
Vehicle Directional - Exterior



1301 Antioch Pike  
Nashville, TN 37211  
p. 615-885-2900  
f. 615-885-2989

This design is being submitted for use as a product being manufactured for you by Signcraft, Inc. It is not to be reproduced, copied or manufactured by you or given to any other manufacturer without written permission from Signcraft, Inc. Unauthorized use is subject to design charge and will include any collection fees.

## EXISTING SIGNAGE



## PROPOSED SIGNAGE



Expansion Project 2017

Date: 10/19/17

Revised: 03/14/19

Drawn by: AJS

Scale: As Noted in Drawing

File Name: Loc 27.ai

File Folder: P> Parkwest Medical  
Center>Parkwest  
Expansion 2017>  
Shop Drawing>  
Exterior

Project Manager: CSR

Sign Type: **SVD**

Location: **27**

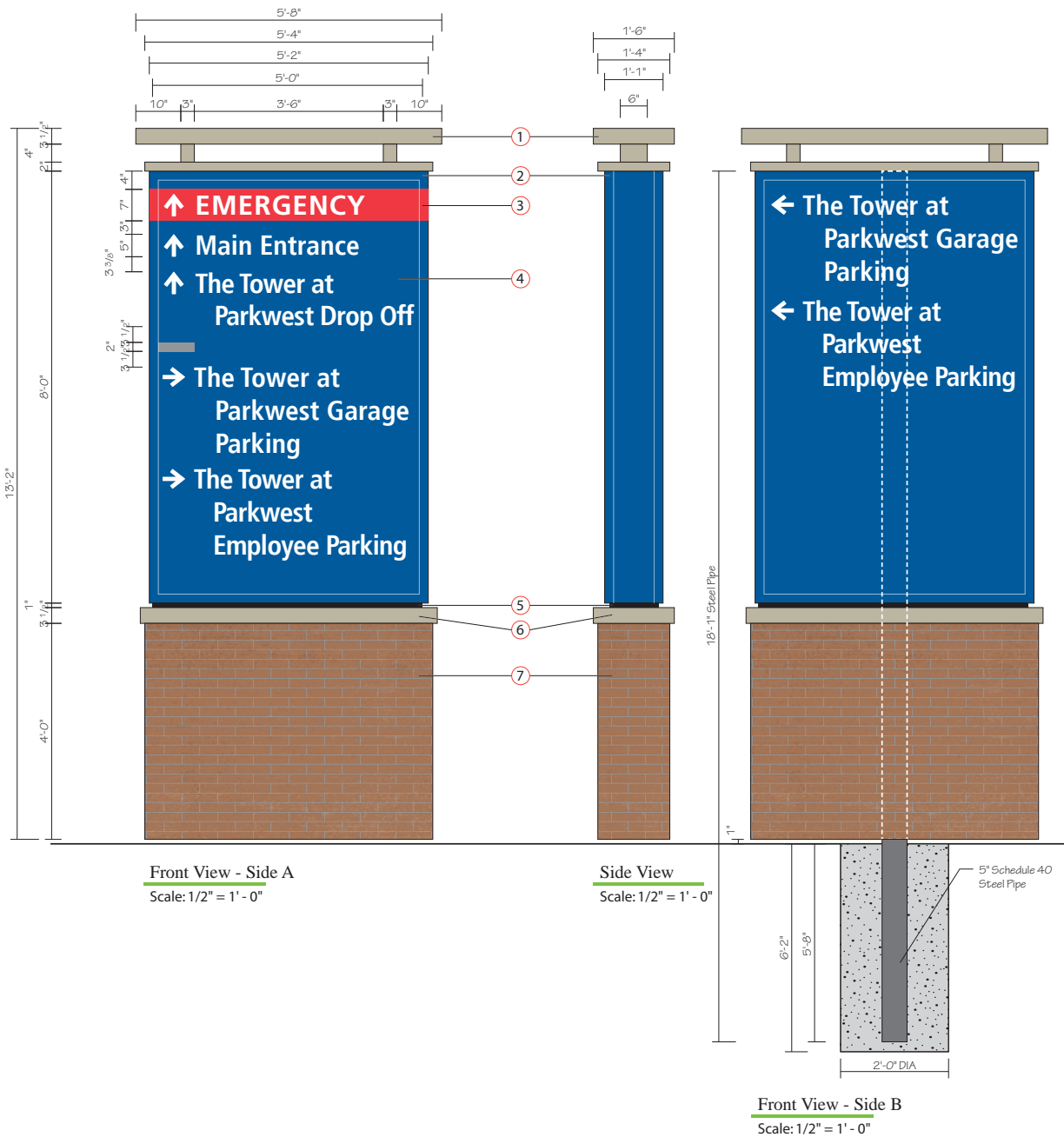
*New Non-Illuminated Small  
Vehicle Directional - Exterior*



1301 Antioch Pike  
Nashville, TN 37211  
p. 615-885-2900  
f. 615-885-2989

This design is being submitted for use as a product being manufactured for you by Signcraft, Inc. It is not to be reproduced, copied or manufactured by you or given to any other manufacturer without written permission from Signcraft, Inc. Unauthorized use is subject to design charge and will include any collection fees.





- NOTES:**
- ① Fabricated Aluminum Structure, painted to match building MPB7 197. White LED Up Lighting in bottom of structure to illuminate bottom of top part of structure.
  - ② 13" Deep fabricated aluminum LED Illuminated cabinet sign with 2" retainers. Cabinet to be painted to match PMS 294c.
  - ③ Paint on cabinet to match PMS 200c.
  - ④ 3/16" Translucent white polycarbonate faces with opaque vinyl to match PMS 294c, translucent red vinyl to match PMS 200c. Letters and arrows reversed out to illuminate white, gray bar to match PMS Cool Cray 7c.
  - ⑤ 1" Reveal painted black.
  - ⑥ Fabricated aluminum brick cap structure, painted to match building MPB7 197.
  - ⑦ Aluminum Framed Base, Clad with Cement Board, Brick Veneer, and Grout to match existing.
- Font: Frutiger Condensed Bold



Expansion Project 2017

Date: 10/19/17

Revised: 04/01/19 - AJS

Drawn by: AJS

Scale: As Noted in Drawing

File Name: Loc 28.ai

File Folder: P> Parkwest Medical  
Center>Parkwest  
Expansion 2017>  
Shop Drawing>  
Exterior

Project Manager: CSR

Sign Type: PVD

Location: 28

Existing Base & New Illuminated  
Primary Vehicle Directional



1301 Antioch Pike  
Nashville, TN 37211  
p. 615-885-2900  
f. 615-885-2989

This design is being submitted for use as a product being manufactured for you by Signcraft, Inc. It is not to be reproduced, copied or manufactured by you or given to any other manufacturer without written permission from Signcraft, Inc. Unauthorized use is subject to design charge and will include any collection fees.

## EXISTING SIGNAGE



## PROPOSED SIGNAGE



Expansion Project 2017

Date: 10/19/17

Revised: 03/14/19

Drawn by: AJS

Scale: As Noted in Drawing

File Name: Loc 28.ai

P> Parkwest Medical  
Center>Parkwest  
Expansion 2017>  
Shop Drawing>  
Exterior

Project Manager: CSR

Sign Type: **PVD**

Location: **28**

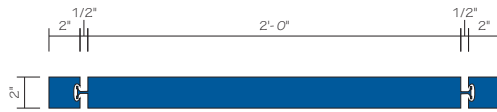
Existing Base & New Illuminated  
Primary Vehicle Directional



1301 Antioch Pike  
Nashville, TN 37211  
p. 615-885-2900  
f. 615-885-2989

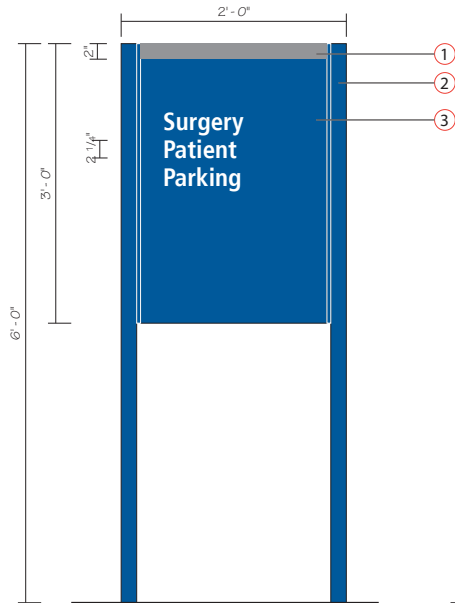
This design is being submitted for use as a product being manufactured for you by Signcraft, Inc. It is not to be reproduced, copied or manufactured by you or given to any other manufacturer without written permission from Signcraft, Inc. Unauthorized use is subject to design charge and will include any collection fees.



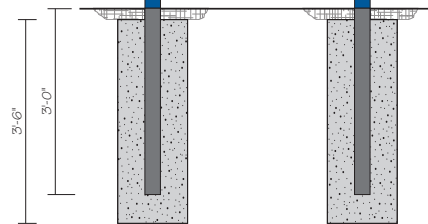


Plan View  
Scale: 1 1/2" = 1' - 0"

**NO EXISTING SIGNAGE  
NEW CONSTRUCTION**



Front View - Side A  
Scale: 3/4" = 1' - 0"



Front View - Side B  
Scale: 3/4" = 1' - 0"

**NOTES:**

- ① Gray Stripe painted to match PMS Cool Cray 7c.
- ② Charleston #225 Posts with reveal, painted to match PMS 294c.
- ③ Charleston frame and aluminum faces painted to match PMS 294c with white reflective vinyl graphics.

Font: Frutiger Condensed Bold



Expansion Project 2017

Date: 06/18/18

Revised: 04/01/19 - AJS

Drawn by: AJS

Scale: As Noted in Drawing

File Name: Loc 29.ai

File Folder: P> Parkwest Medical  
Center>Parkwest  
Expansion 2017>  
Shop Drawing>  
Exterior

Project Manager: CSR

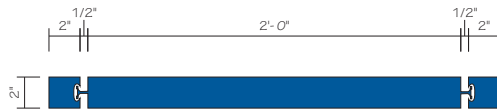
Sign Type: **SPP**  
Location: **29**

New Small Post & Panel  
Directional - Exterior



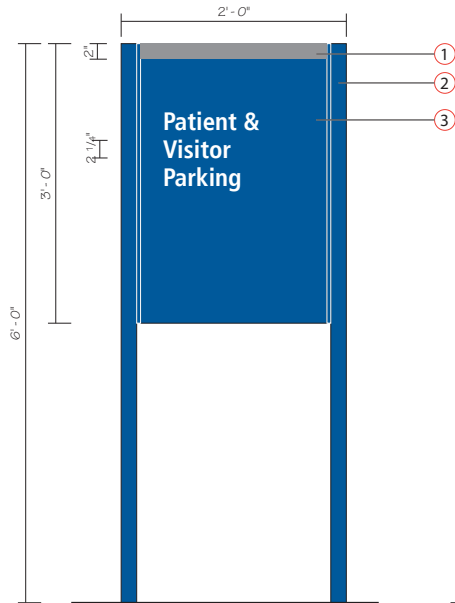
1301 Antioch Pike  
Nashville, TN 37211  
p. 615-885-2900  
f. 615-885-2989

This design is being submitted for use as a product being manufactured for you by Signcraft, Inc. It is not to be reproduced, copied or manufactured by you or given to any other manufacturer without written permission from Signcraft, Inc. Unauthorized use is subject to design charge and will include any collection fees.

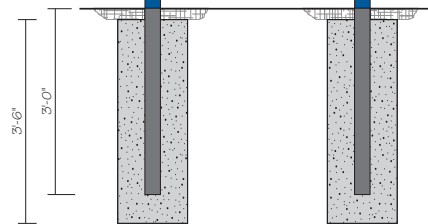


Plan View  
Scale: 1 1/2" = 1' - 0"

**NO EXISTING SIGNAGE  
NEW CONSTRUCTION**



Front View - Side A  
Scale: 3/4" = 1' - 0"



Front View - Side B  
Scale: 3/4" = 1' - 0"

**NOTES:**

- ① Gray Stripe painted to match PMS Cool Gray 7c.
- ② Charleston #225 Posts with reveal, painted to match PMS 294c.
- ③ Charleston frame and aluminum faces painted to match PMS 294c with white reflective vinyl graphics.

Font: Frutiger Condensed Bold



Expansion Project 2017

Date: 06/18/18

Revised: 04/01/19 - AJS

Drawn by: AJS

Scale: As Noted in Drawing

File Name: Loc 30.ai

File Folder: P> Parkwest Medical Center>Parkwest Expansion 2017> Shop Drawing> Exterior

Project Manager: CSR

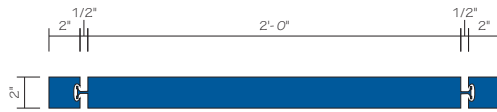
Sign Type: **SPP**  
Location: **30**

*New Small Post & Panel  
Directional - Exterior*



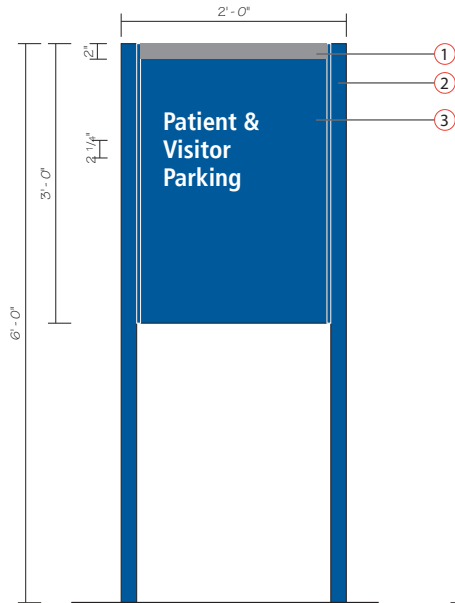
1301 Antioch Pike  
Nashville, TN 37211  
p. 615-885-2900  
f. 615-885-2989

This design is being submitted for use as a product being manufactured for you by Signcraft, Inc. It is not to be reproduced, copied or manufactured by you or given to any other manufacturer without written permission from Signcraft, Inc. Unauthorized use is subject to design charge and will include any collection fees.

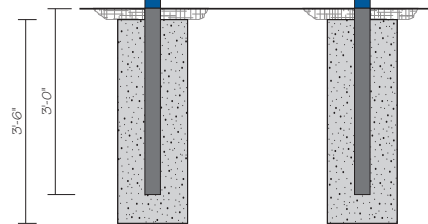


Plan View  
Scale: 1 1/2" = 1' - 0"

**NO EXISTING SIGNAGE  
NEW CONSTRUCTION**



Front View - Side A  
Scale: 3/4" = 1' - 0"



Front View - Side B  
Scale: 3/4" = 1' - 0"

**NOTES:**

- ① Gray Stripe painted to match PMS Cool Gray 7c.
- ② Charleston #225 Posts with reveal, painted to match PMS 294c.
- ③ Charleston frame and aluminum faces painted to match PMS 294c with white reflective vinyl graphics.

Font: Frutiger Condensed Bold



Expansion Project 2017

Date: 06/18/18

Revised: 04/01/19 - AJS

Drawn by: AJS

Scale: As Noted in Drawing

File Name: Loc 31.ai

File Folder: P> Parkwest Medical  
Center>Parkwest  
Expansion 2017>  
Shop Drawing>  
Exterior

Project Manager: CSR

Sign Type: **SPP**

Location: **31**

New Small Post & Panel  
Directional - Exterior



1301 Antioch Pike  
Nashville, TN 37211  
p. 615-885-2900  
f. 615-885-2989

This design is being submitted for use as a product being manufactured for you by Signcraft, Inc. It is not to be reproduced, copied or manufactured by you or given to any other manufacturer without written permission from Signcraft, Inc. Unauthorized use is subject to design charge and will include any collection fees.



Suite 403 • City County Building  
400 Main Street  
Knoxville, Tennessee 37902  
865 • 215 • 2500  
FAX • 215 • 2068  
www.knoxmpc.org

**Use on Review**     **Development Plan**

Name of Applicant: Sycamore Sign Service

Date Filed: 4/29/19    Meeting Date: 6/13/19

Application Accepted by: Janner Reed

Fee Amount: \_\_\_\_\_ File Number: Development Plan \_\_\_\_\_

Fee Amount: \$1,500 File Number: Use on Review 6-6-19-UR

**PROPERTY INFORMATION**

Address: 9352 Park W Blvd / 420 Park 40 North Blvd

General Location: Between Sherrill Blvd & I-40

Tract Size: 32.11 / 33.66 acres No. of Units: \_\_\_\_\_

Zoning District: PC-1 City / PC/OB county

Existing Land Use: medical campus

Planning Sector: Northview County

Sector Plan Proposed Land Use Classification:  
Office

Growth Policy Plan Designation: Urban Growth/

Census Tract: 46.11 City

Traffic Zone: 221

Parcel ID Number(s): 119 01837, 119 01836

Jurisdiction:  City Council 2 District

County Commission 3 District

**PROPERTY OWNER/OPTION HOLDER**

PLEASE PRINT  
Name: Fort Sanders-Parkwest Medical Center

Company: \_\_\_\_\_

Address: 1420 Centerpoint Blvd

City: Knoxville State: TN Zip: 37932

Telephone: \_\_\_\_\_

Fax: \_\_\_\_\_

E-mail: \_\_\_\_\_

**APPLICATION CORRESPONDENCE**

All correspondence relating to this application should be sent to:

PLEASE PRINT  
Name: Julie Shelby-Davis

Company: Sycamore Sign Service

Address: 3315 Riverside Drive

City: Knoxville State: TN Zip: 37914

Telephone: 865 247 0466

Fax: 866 935-9597

E-mail: julie.davis@sycamoresignservice.com

**APPROVAL REQUESTED**

Development Plan: Residential  Non-Residential

Home Occupation (Specify Occupation)

Other (Be Specific)

**APPLICATION AUTHORIZATION**

I hereby certify that I am the authorized applicant, representing ALL property owners involved in this request or holders of option on same, whose signatures are included on the back of this form.

Signature: [Handwritten Signature]

PLEASE PRINT  
Name: Julie Shelby-Davis

Company: Sycamore Sign Service

Address: 3315 Riverside Drive

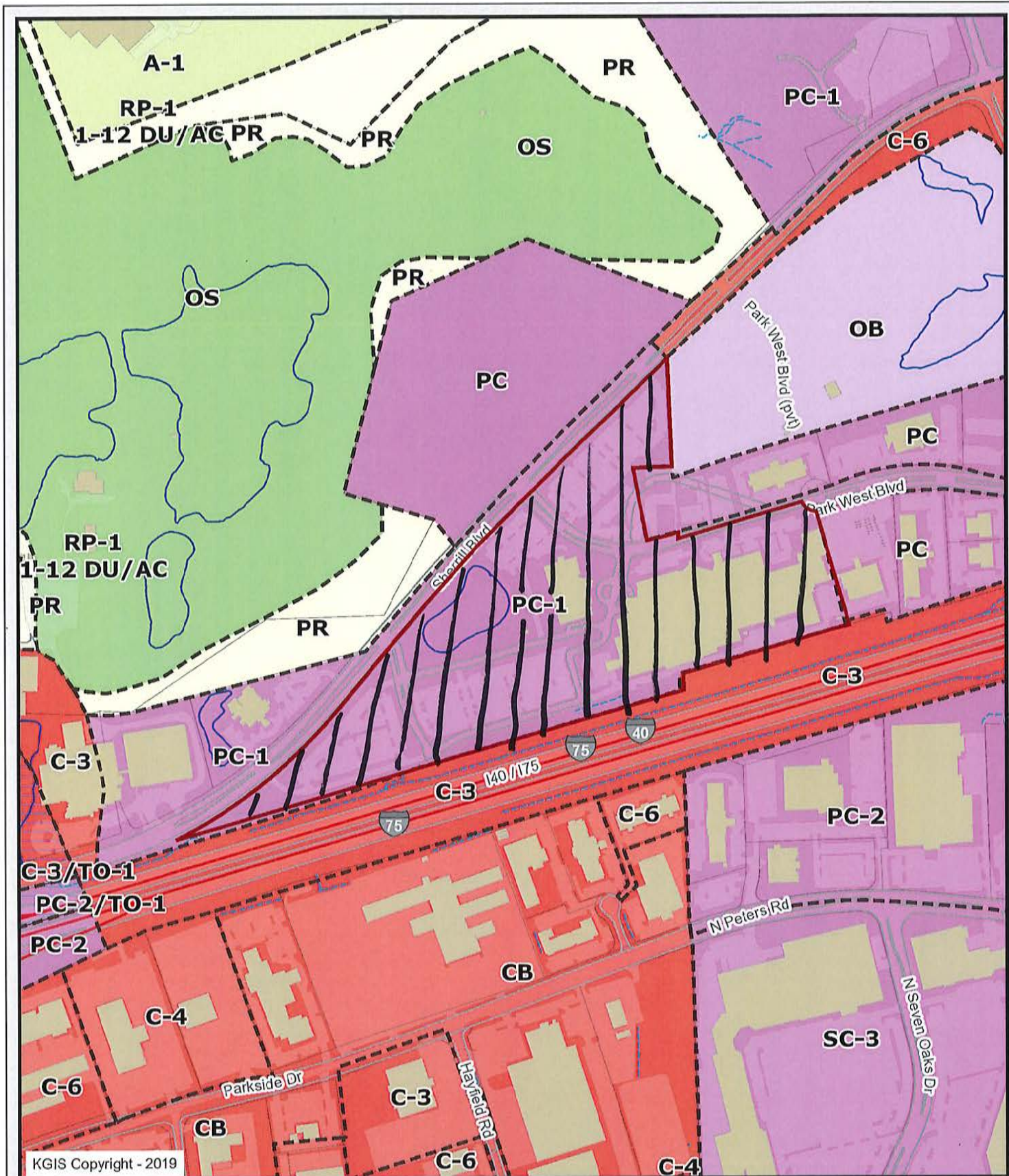
City: Knoxville State: TN Zip: 37914

Telephone: 865 247 0466

E-mail: julie.davis@sycamoresignservice.com







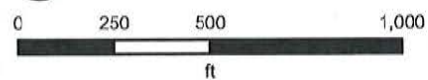
KGIS Copyright - 2019

Letter Portrait

Knoxville - Knox County - KUB Geographic Information System

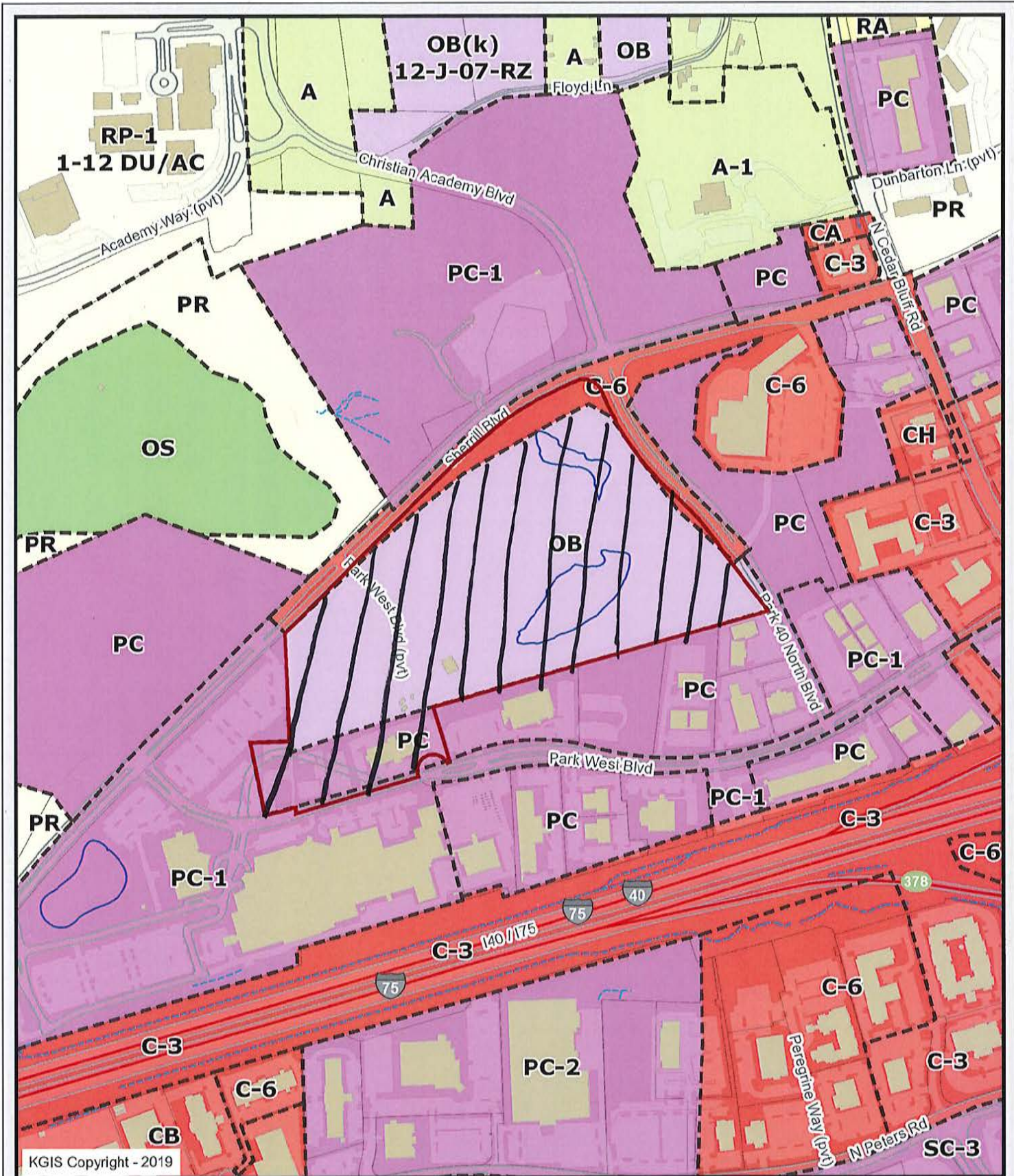


Printed: 5/2/2019 at 9:06:38 AM



KGIS makes no representation or warranty as to the accuracy of his map and its information nor to its fitness for use. Any user of this map product accepts the same AS IS, WITH ALL FAULTS, and assumes all responsibility for the use thereof, and further covenants and agrees to hold KGIS harmless from any and all damage, loss, or liability arising from any use of this map product.





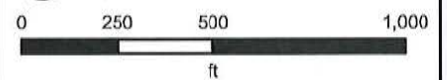
KGIS Copyright - 2019

### Letter Portrait

Knoxville - Knox County - KUB Geographic Information System



Printed: 5/2/2019 at 9:05:53 AM



KGIS makes no representation or warranty as to the accuracy of his map and its information nor to its fitness for use. Any user of this map product accepts the same AS IS, WITH ALL FAULTS, and assumes all responsibility for the use thereof, and further covenants and agrees to hold KGIS harmless from any and all damage, loss, or liability arising from any use of this map product.



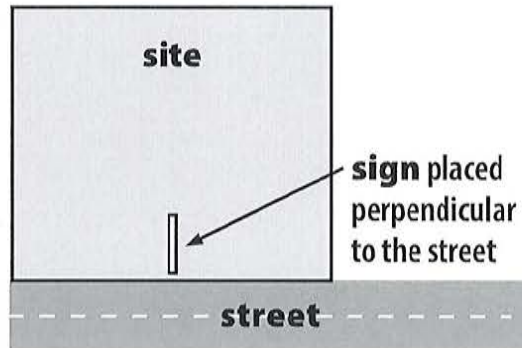
## REQUIRED SIGN POSTING AGREEMENT

For all rezoning, plan amendment, concept plan, use on review, right-of-way closure, and street name change applications, a sign must be posted on the subject property, consistent with the adopted Administrative Rules and Procedures.

At the time of application, staff will provide a sign(s) to post on the property as part of the application process. If the sign(s) go missing for any reason and need to be replaced, then the applicant will be responsible for picking up a new sign(s) from the Planning offices. The applicant will be charged a fee of \$10 for each replacement sign.

### LOCATION AND VISIBILITY

The sign must be posted in a location that is clearly visible from vehicles traveling in either direction on the nearest adjacent/frontage street. If the property has more than one street frontage, then the sign should be placed along the street that carries more traffic. Planning staff may recommend a preferred location for the sign to be posted at the time of application.




### TIMING

The sign(s) must be posted 15 days before the scheduled Planning Commission public hearing and must remain in place until the day after the meeting. In the case of a postponement, the sign can either remain in place or be removed and reposted 15 days before the next Planning Commission meeting.

I hereby agree to post and remove the sign(s) provided on the subject property consistent with the above guidelines and between the dates of:

May 29 and June 14  
 (15 days before the Planning Commission meeting) (the day after the Planning Commission meeting)

Signature: 

Printed Name: Julie Shelby-Davis

Phone: 865 247 0466 Email: julie.davis@syncmore sign service. com

Date: 4/29/19

File Number: 6-<sup>G</sup>~~A~~-19-UR