

CONCEPT PLANTING SCHEDULE

	HAWTHORN / <i>Cornus virginica 'Winter King'</i>	10'-12" H	5' GAL
	RIVER BIRCH / <i>Betula nigra 'Dura Heat'</i> 'Mid-Sun'	10'-12" H	2' GAL
	RED MAPLE / <i>Acer rubrum 'October Glory'</i> TM	10'-12" H	2' GAL
	MILLON OAK / <i>Quercus phellos</i>	10'-12" H	2' GAL
	EVERGREEN TREES		
	GLOSSON / BOTANICAL NAME	SIZE	GAL
	FOSTER HOLLY / <i>Ilex attenuata 'Foster's'</i>	6'-7" H	1.5' GAL
	JAPANESE CEDAR / <i>Cryptomeria japonica</i>	6'-7" H	1.5' GAL
	SWEET BAY / <i>Magnolia virginiana</i>	6'-7" H	1.5' GAL
	WHITE PINE / <i>Pinus strobus</i>	6'-7" H	1.5' GAL
	FLOWERING TREES		
	GLOSSON / BOTANICAL NAME	SIZE	GAL
	CRAPPE MYRTLE / <i>Lagerstroemia indica 'Muskogee'</i>	7'-8" H	1.5' GAL
	KOUSA DOGWOOD / <i>Cornus kousa</i>	7'-8" H	1.5' GAL
	GLOSSON / BOTANICAL NAME	SIZE	GAL
	BURNING BUSH / <i>Elaeagnus obtusa 'Compacta'</i>	36" H	B4B
	MINI GRAPE HYDRANGEA / <i>Lagerstroemia indica 'Palomara'</i>	12-15" H	9 gal
	OAKLEAF HYDRANGEA / <i>Hydrangea quercifolia</i>	34-36" H	B4B
	FREE KIE HYD. / <i>Hydrangea quercifolia 'Free Kie'</i>	15-18" H	9 gal
	EVERGREEN SHRUBS		
	GLOSSON / BOTANICAL NAME	SIZE	GAL
	DWARF NANDINA / <i>Nandina domestica 'Gulf Stream'</i>	12-15" H	9 gal
	INDIAN HAWTHORN / <i>Rhodolaefia indica 'Indian Princess'</i>	12-15" H	9 gal
	JAP. HOLLY / <i>Ilex crenata 'Hogspoon'</i>	15-18" H	9 gal
	OTTO LUYKEN LAUREL / <i>Prunus laurocerasus 'Otto Luyken'</i>	10-24" H	B4B
	FLUM YEW / <i>Cephalotaxus harringtonia 'Prostrata'</i>	12-15" H	9 gal

SLOPE SEED MIX SPECIFICATION:

1. LOOSEN THE SOIL TO ACCEPT THE SEED MIX.
2. APPLY AGRICULTURAL LIME AS PER A SOIL TEST OR AT A RATE OF 1 TO 2 TONS PER ACRE.
3. SEED THE SLOPE WITH A MIXTURE AS FOLLOWS:

CUSTOM MIXTURE (STOCK SEED FERT'S 1-800-759-5204)
 BUFFALOGRASS (35%) / FESTUCA DACTYLOIDES 'TEXOKA')
 BLUE GRAMA (20%) / BOUTELOUA GRACILLUS)
 BIRDSFOOT GRAMA (15%) / BOUTELOUA CURTIPENDULA)
 WARM SEASON MIXTURE

LITTLE BLUE STEM (15%) / SCHIZACHYRIUM SCOPARUM)
 SHEEP FESCUE (15%) / FESTUCA OVINA)
 SEEDING DATE: LATE SPRING TO MID-SUMMER
 SEEDING RATE: BROADCAST, 1.1 LB/S / 10000 SQFT.

CUSTOM MIXTURE (STOCK SEED FERT'S 1-800-759-5204)
 KENTUCKY 31 TALL FESCUE (55%) / FESTUCA ARIANDINACEA)
 CREEPING RED FESCUE (15%) / FESTUCA RUBRA)
 VIRGINIA WILD RYE (20%) / ELYTUS VIRGINICUS)
 COOL SEASON MIXTURE

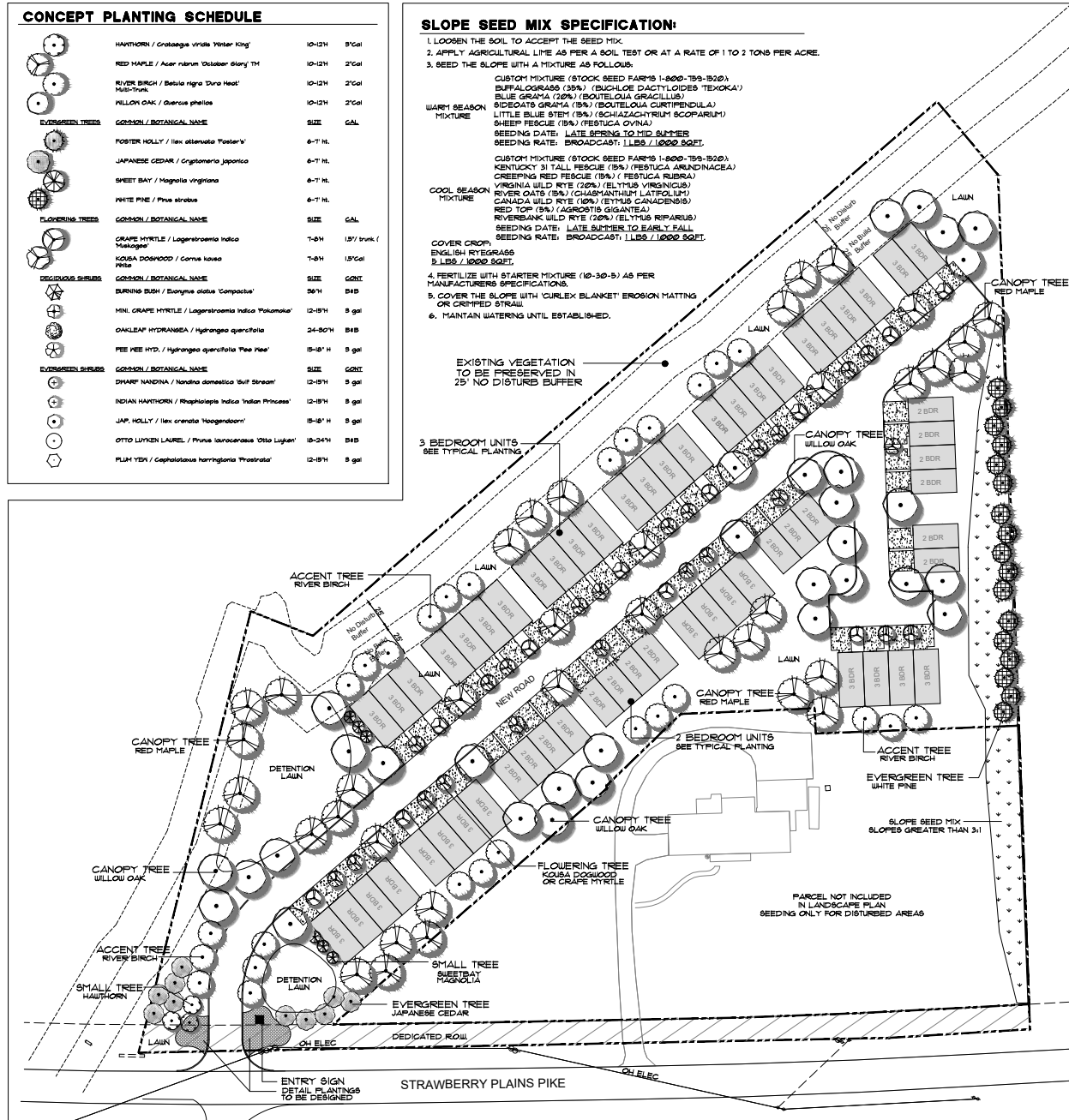
RIVER OATS (5%) / CHLORANTHUM LATIFOLIUM)
 CANADA WILD RYE (10%) / ELYTUS CANADENSIS)
 RED TOP (15%) / AGROSTIS GIANTEA)
 RIVERBANK WILD RYE (20%) / ELYTUS RIPARIUS)
 SEEDING DATE: LATE SUMMER TO EARLY FALL
 SEEDING RATE: BROADCAST, 1.1 LB/S / 10000 SQFT.

COVER CROP:
 ENGLISH RYEGRASS
 5 LB/S / 10000 SQFT.

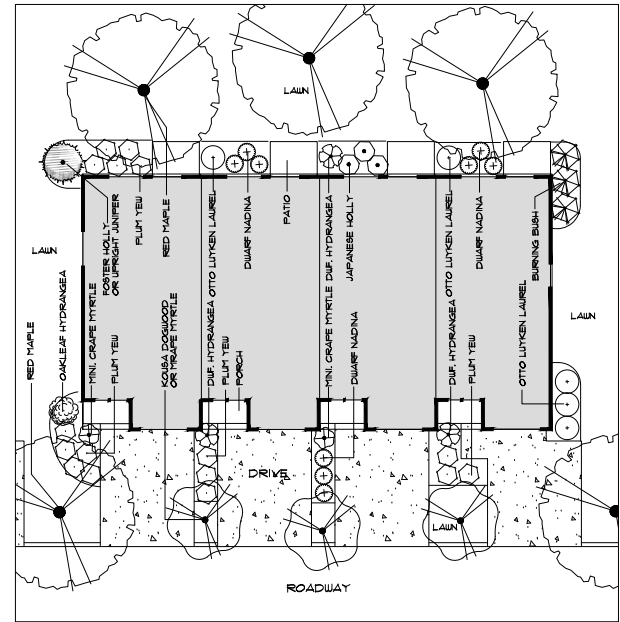
4. FERTILIZE WITH STARTER MIXTURE (10-30-5) AS PER MANUFACTURERS SPECIFICATIONS.
5. COVER THE SLOPE WITH 'CURLEX BLANKET' EROSION MATTING OR CRIMPED STRAW.
6. MAINTAIN WATERING UNTIL ESTABLISHED.

EXISTING VEGETATION TO BE PRESERVED IN 25' NO DISTURB BUFFER

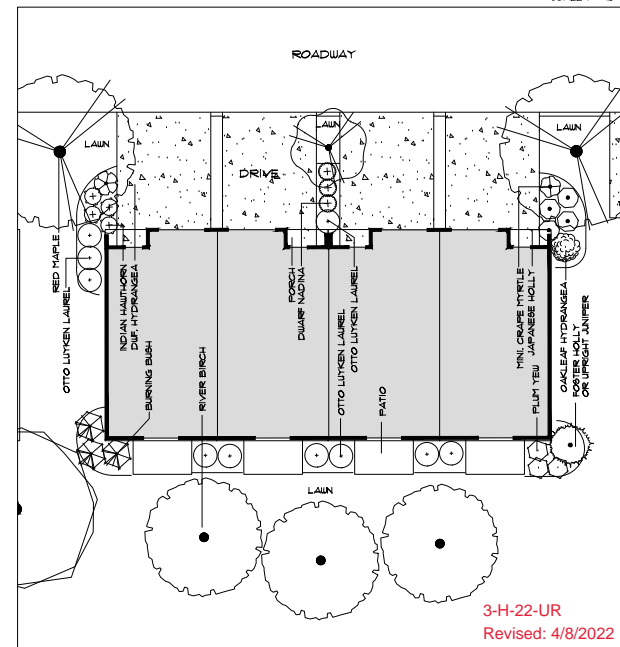
3 BEDROOM UNITS SEE TYPICAL PLANTING



Overall Landscape Plan
 SCALE 1" = 40'



Typical 3 Bedroom Planting
 SCALE 1" = 10'



Typical 2 Bedroom Planting
 SCALE 1" = 10'

Concept Landscape Plan

Strawberry Meadows
 6721 Strawberry Plains Pike Knoxville, Tennessee

MICHAEL VERSEN & ASSOCIATES
 LANDSCAPE ARCHITECTURE ... LAND PLANNING
 255 N. BERGAMBER RD., SUITE 201 KNOXVILLE, TN 37912

JOB NO: 222002
 DRAWN: MAV/RJM
 DATE: JAN 19, 2022
 REVISION: APR 6, 2022

SCALE AS SHOWN

3-H-22-UR
 Revised: 4/8/2022