

PLANTING SPECIFICATIONS

SCOPE OF WORK
 PROVIDE ALL LABOR AND EQUIPMENT NECESSARY FOR A COMPLETE AND QUALITY LANDSCAPE AS PER PLANS AND SPECIFICATIONS.

REFERENCES AND STANDARDS
 PERFORM ALL WORK IN ACCORDANCE WITH ALL APPLICABLE NATIONAL, STATE AND LOCAL CODES, AND ORDINANCES.

PROVIDE LICENSES AND NECESSARY PERMITS PRIOR TO BEGINNING WORK. CARRY GENERAL LIABILITY AND WORKMAN'S COMPENSATIONS INSURANCE IN AMOUNTS REQUIRED BY THE STATE.

QUALITY OF ALL MATERIALS SHALL MEET OR EXCEED THE STANDARDS OF THE 'AMERICAN STANDARD FOR NURSERY STOCK' LATEST EDITION, AS PUBLISHED BY THE AMERICAN ASSOCIATION OF NURSERYMEN.

PROJECT CONDITIONS
 REVIEW AND BECOME FAMILIAR WITH SITE CONDITIONS AND CONSTRUCTION DOCUMENTS. PROTECT ALL UTILITIES AND EXISTING FACILITIES. FIELD VERIFY ROW / PROPERTY LINE WITH OWNERS. IF CONDITIONS DETRIMENTAL TO PLANT GROWTH AND INSTALLATION ARE ENCOUNTERED, (I.E. ADVERSE DRAINAGE CONDITIONS AND OBSTRUCTIONS) CONTACT THE LANDSCAPE ARCHITECT FOR INSTRUCTIONS.

LAYOUT
 LAYOUT AND STAKE ALL SITE WORK AND PLANTINGS. CONTACT LANDSCAPE ARCHITECT FOR APPROVAL PRIOR TO START OF WORK. ALLOW THREE DAYS AFTER NOTIFICATION OF STAKING FOR APPROVAL.

THE LANDSCAPE ARCHITECT RESERVES THE RIGHT TO ADJUST PLANTINGS, LOCATIONS, ETC. TO ACCOMMODATE LOCAL CONDITIONS, SUCH ADJUSTMENTS, IF MADE, WILL BE DEEMED CLARIFICATIONS AND NOT CHANGE ORDERS.

EROSION CONTROL AND SITE CLEANUP
 PROVIDE EROSION CONTROL AS NECESSARY. MAINTAIN SITE CLEANUP THROUGHOUT WORK AND PROVIDE A FINAL JOB CLEANUP.

TREES SHRUBS AND GROUNDCOVERS

PLANT MATERIAL
 NURSERY GROWN, SOUND, HEALTHY AND VIGOROUS, WELL BRANCHED AND DENSELY FOLIATED WHEN IN LEAF AND HAVE HEALTHY, WELL DEVELOPED ROOT SYSTEM.

GROUND UNDER CLIMATIC CONDITIONS SIMILAR TO THOSE IN LOCALITY OF PROJECT (PREFERABLY WITHIN A 200-MILE RADIUS OF THE PROJECT SITE).

PLANTS MUST BE EQUAL OR EXCEED THE MEASUREMENTS DENOTED IN THE PLANT LIST, WHICH ARE MINIMUM ACCEPTABLE SIZES.

PRUNE ONLY AS DIRECTED BY LANDSCAPE ARCHITECT. IN NO CASE SHOULD THE PLANTS BE PRUNED BACK TO AN EXTENT THAT THEY NO LONGER MEET THE SPECIFICATIONS.

SUBMITTALS
 PROVIDE VERIFICATION OF PLANT INSPECTION CERTIFICATES, GENUS, SPECIES AND VARIETY, PROPOSED SCHEDULE OF WORK, SOIL TEST RESULTS, PROPOSED RATES OF APPLICATION OF FERTILIZERS AND SOIL CONDITIONS PRIOR TO INSTALLATION.

PLANT INSPECTION
 THE LANDSCAPE ARCHITECT MAY INSPECT PLANT MATERIALS EITHER AT THE PLACE OF GROWTH OR AT THE SITE BEFORE PLANTING. DEFECTIVE OR UNSATISFACTORY MATERIAL MAY BE REJECTED AT ANY TIME DURING PROGRESS OF WORK.

SOIL AMENDMENTS
 FERTILIZER, COMMERCIAL GRADE, 10-6-4 FORMULA CONFORMING TO U.S. DEPARTMENT OF AGRICULTURAL STANDARDS DELIVERED IN ORIGINAL UNOPENED CONTAINERS BEARING MANUFACTURER'S GUARANTEED ANALYSIS AND MIXTURE.

EXISTING SOIL
 CONTRACTOR SHALL BE RESPONSIBLE TO VERIFY EXISTING SOIL CONDITION FOR DRAINAGE AND NUTRIENT CONTENT REPORT ANY PROBLEMS TO LANDSCAPE ARCHITECT PRIOR TO BEGINNING PLANT INSTALLATION.

TOP SOIL

1. FERTILE, FRIABLE, NATURAL LOAM, TYPICAL FOR LOCALITY.
 2. AGRICULTURAL SOIL, CAPABLE OF SUSTAINING VIGOROUS PLANT GROWTH.
 3. TAKEN FROM WELL-DRAINED SITE.
 4. FREE OF SUBSOIL, CLAY LUMPS OR STONES LARGER THAN ONE INCH IN DIAMETER, PLANTS WEEDS, AND ROOTS.
 5. HAVING PH VALUE OF 5.4 MINIMUM AND 10 MAXIMUM.
 6. CONTAINING 6 PERCENT MINIMUM ORGANIC MATTER.

1. TEST TOPSOIL TO INSURE PROPER PERCENTAGE OF NITROGEN, PHOSPHORUS, AND POTASH, ORGANIC MATTER AND PH VALUE
 UNLESS SPECIFIED IN PLANTING SCHEDULE ALL PLANTING AREAS TO HAVE 12 INCHES OF TOPSOIL AND ALL LAWN AREAS TO HAVE 4 INCHES OF TOP SOIL.

PLANTING SOIL MIX
 5 PARTS TOPSOIL (LOAM) AND 2 PARTS SAND (USE WITH CLAY LOAMS OR SILTY LOAMS)

NOTE: PLANTING SOIL MIX MAY BE SUBSTITUTED WITH APPROVED TOPSOIL.

PREPARED PLANTING BED AREAS (ANNUALS & GROUNDCOVERS)

1. TILL SOIL TO A DEPTH OF 12 INCHES.
 2. ADD MINIMUM OF 4 INCHES TOPSOIL AND 1 INCHES FEAT.
 3. EVENLY TILL TO DEPTH OF 6 INCHES.
 4. RAKE TO LEVEL GRADE THEN ADD 2 INCHES PINE BARK MULCH PRIOR TO PLANTING.

LANDSCAPE BEDS
 ALL LANDSCAPE BEDS TO BE 4 TO 6 INCHES HIGHER THAN EXISTING FINISHED GRADE. TAPER BEDS ADJACENT TO HARDSCAPE SURFACES AND INSTALL 'V' TRENCH EDGE ADJACENT TO LAWNS (SEE DETAIL).

MULCHES
 MULCHES SHALL BE FREE FROM MATURED SEED, NOXIOUS WEEDS, EGG CASES, HARMFUL INSECTS, OR ANY SPECIES OR CHEMICAL DETRIMENTAL TO THE DEVELOPMENT OF PLANTS AND HUMANS. CONTRACTOR SHALL ASSUME FULL RESPONSIBILITY FOR CONTROL OF NOXIOUS WEEDS INTRODUCED ON THE SITE IN THE MULCH FOR PERIOD OF ONE YEAR AFTER SUBSTANTIAL COMPLETION OF THE WORK. MULCHES SHALL EXHIBIT UNIFORM TEXTURE COLOR AND PARTICLE SIZE. SECURE LANDSCAPE ARCHITECT'S APPROVAL FOR SPECIFIC MULCH TYPE.

PROTECTION
 PROTECT WORK FROM EROSION, FLOODING, WINDS AND RAIN. REPAIR OR REPLACE ANY DAMAGED AREAS.

PLANTING
 REMOVE BURGLAP AND TIES FROM TOP AND PARTIAL SIDES OF ALL PLANT BALLS. PLANT ALL TREES, SHRUBS AND GROUND COVERS AS PER PLANTING DETAILS. ROOTS OF GROUND COVER TO BE PLANTED IN SOIL, NOT MULCH TOP DRESSING.

MAINTENANCE
 MAINTAIN PLANTINGS (WATERING, WEEDING, FERTILIZING, CULTIVATION, DISEASE AND INSECT CONTROL, STAKING, ETC) UNTIL FINAL INSPECTION AND ACCEPTANCE.
 SUBMIT WRITTEN MAINTENANCE INSTRUCTIONS TO LANDSCAPE ARCHITECT.

INSPECTION AND ACCEPTANCE
 UPON COMPLETION OF PLANTING, REQUEST AN INSPECTION FOR PROJECT ACCEPTANCE. ONLY PLANTING SHOWING SIGNS OF HEALTHY GROWTH AND SATISFACTORY CONDITION OF FOLIAGE WILL BE ACCEPTED. MAINTAIN THE PROJECT UNTIL ALL INSPECTION PUNCH LIST ITEMS (EXCLUSIVE OF SEASON REPLACEMENT PLANTING) HAVE BEEN CORRECTED TO THE SATISFACTORY OF THE LANDSCAPE ARCHITECT.

GUARANTEE AND REPLACEMENT
 GUARANTEE ALL PLANT MATERIAL FOR A PERIOD OF ONE YEAR AFTER DATE OF PROJECT ACCEPTANCE. GUARANTEE AGAINST DEFECTS, INCLUDING DEATH AND UNSATISFACTORY GROWTH DEFECTS RESULTING FROM NEGLIGENCE BY OWNER, ABUSE OR DAMAGE BY OTHERS, OR UNUSUAL PHENOMENA OR INCIDENTS WHICH ARE BEYOND CONTRACTOR'S CONTROL. IMMEDIATELY REMOVE AND REPLACE TREES, SHRUBS, OR OTHER PLANTS FOUND TO BE UNSATISFACTORY DURING GUARANTEE PERIOD.

LAWNS AND GRASSES

QUALITY ASSURANCE
 PROVIDE FRESH, CLEAN, NEW-CROP SEED COMPLYING WITH TOLERANCE FOR PURITY AND GERMINATION ESTABLISHED BY OFFICIAL SEED ANALYSIS OF NORTH AMERICA. SUBMIT SEED VENDOR'S CERTIFIED STATEMENT FOR EACH GRASS SEED MIXTURE.

PROJECT CONDITIONS
 PROCEED WITH AND COMPLETE LAWNS AND GRASSES AS PORTIONS OF SITE BECOME AVAILABLE. WORKING WITHIN SEASONAL LIMITATIONS. PROJECT MANAGER TO INFORM CONTRACTOR AS PARTS OF SITE BECOME AVAILABLE AND ESTABLISH A REASONABLE SCHEDULE TO PERFORM WORK.

FERTILIZER AND LIME
 FERTILIZER WITH COMMERCIAL FERTILIZER. PERCENTAGE TO BE DETERMINED WITH ANALYSIS AND SEASON OF INSTALLATION.
 LIME TO BE NATURAL DOLOMITIC LIMESTONE CONTAINING NOT LESS THAN 88% CARBONATES, MINIMUM OF 30% MAGNESIUM CARBONATES.

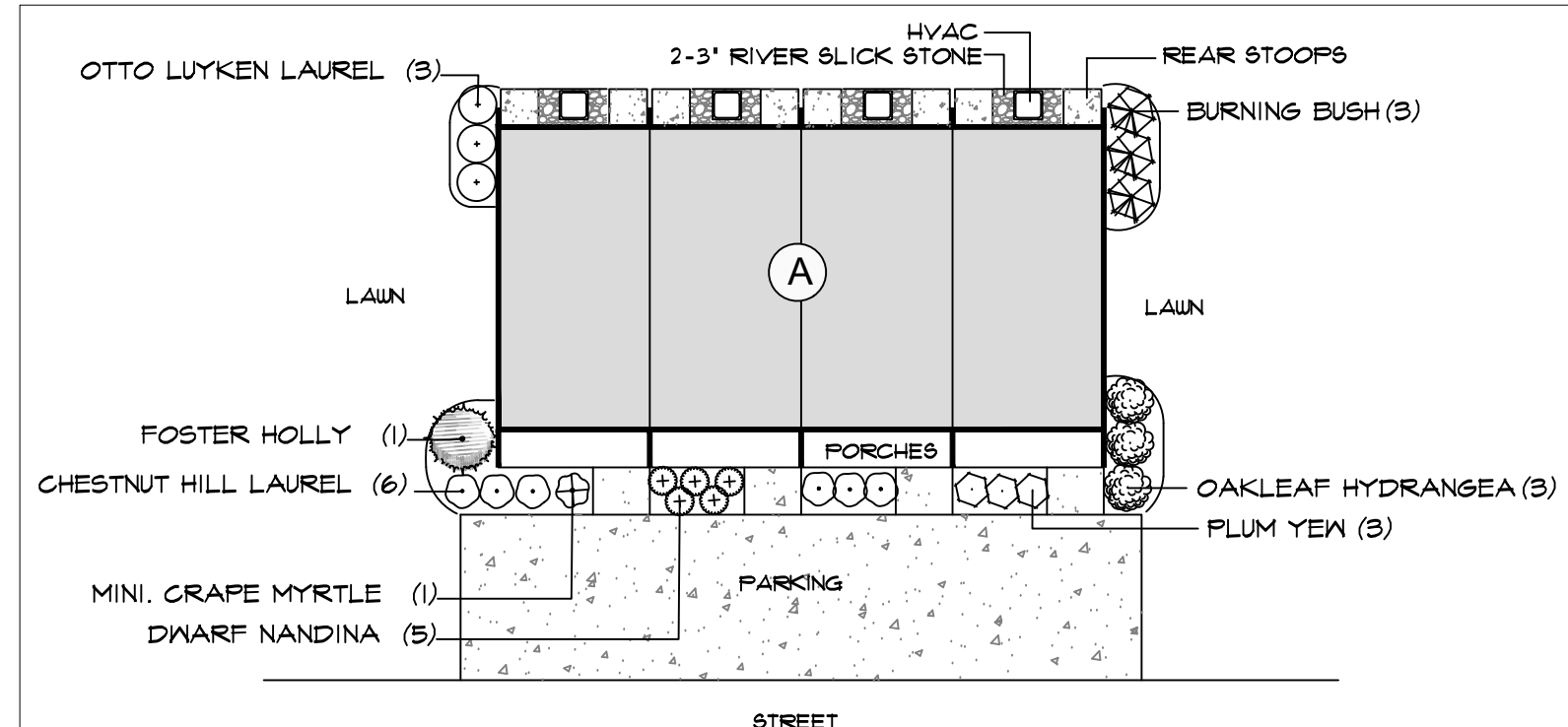
SEED
 SEED MIXTURE AND RATE OF APPLICATION SHALL BE AS SPECIFIED IN MATERIAL LIST.

SEED SOIL PREPARATION

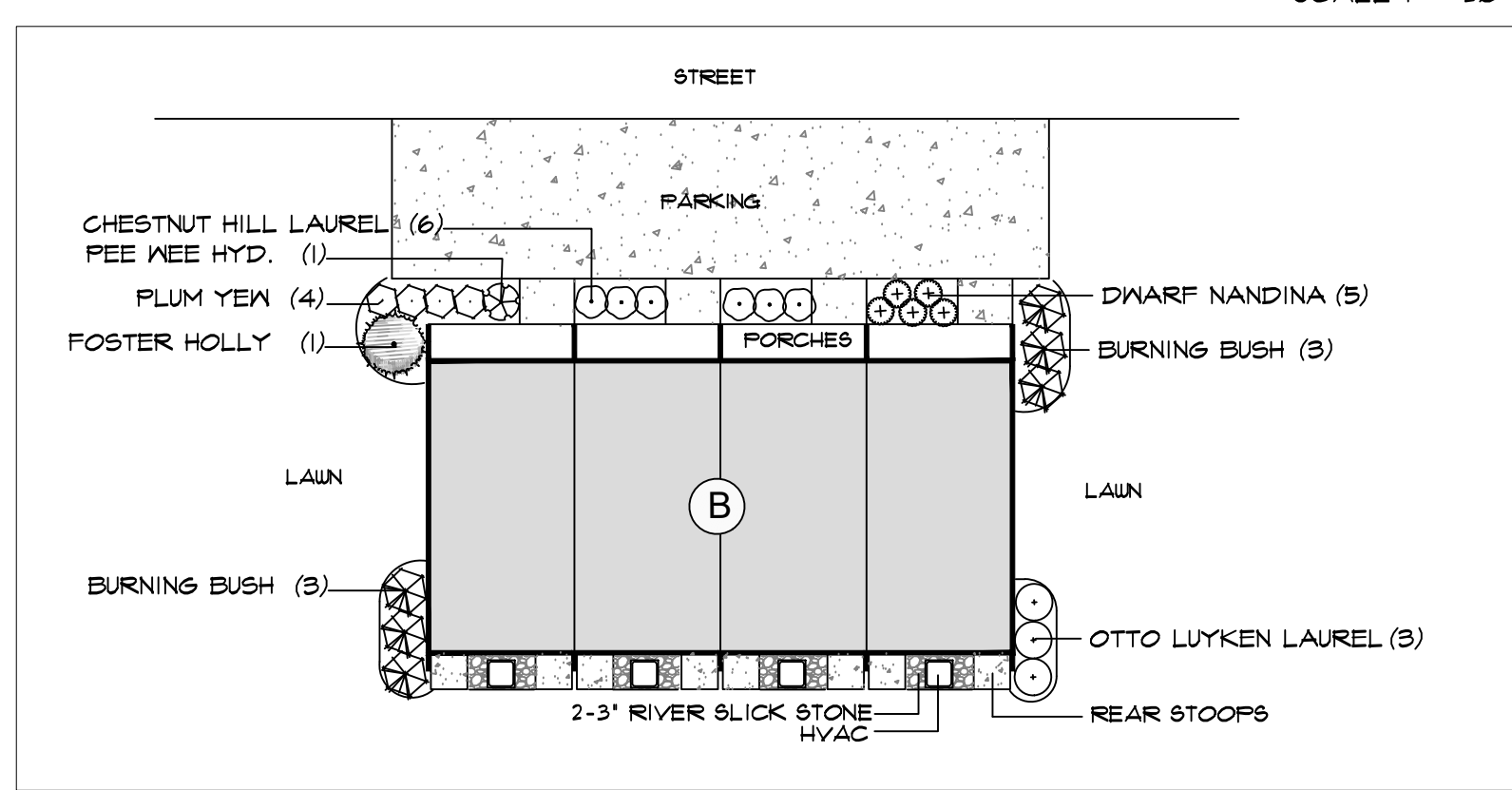
1. TILL TO A DEPTH OF NOT LESS THAN 6 INCHES.
 2. ELIMINATE UNEVEN AREAS AND LOW SPOTS. MAKE CHANGES IN GRADE GRADUAL.
 3. TILL SOIL TO A HOMOGENEOUS MIXTURE OF FINE TEXTURE, FREE OF CLODS.
 4. REMOVE STONES LARGER THAN ONE INCH AND OTHER EXTRANEIOUS MATERIAL.
 5. APPLY TOPSOIL LAYER IF SPECIFIED.
 6. APPLY LIME AT RATE REQUIRED TO ACHIEVE PH RANGE BETWEEN 6.0 AND 6.5.
 7. APPLY FERTILIZER AT RATE REQUIRED BY ANALYSIS.
 8. MIX THOROUGHLY IN UPPER TWO INCHES OF TOPSOIL.

SEEDING AND MULCHING
 APPLY SEED AT RATE SPECIFIED OR AS NECESSARY TO INSURE A UNIFORM AND FULL STAND OF GRASS, EVENLY, BY SOWING EQUAL QUANTITY IN 2 DIRECTIONS AT RIGHT ANGLES TO EACH OTHER.
 RAKE SEED LIGHTLY INTO TOP 1/4 INCH OF SOIL AND ROLL SEEDS IN AREA WITH ROLLER NOT EXCEEDING 10 LBS. IMMEDIATELY FOLLOWING ROLLING, APPLY MULCH SPREAD UNIFORMLY TO FORM A CONTINUOUS BLANKET NOT LESS THAN 1/2 INCH THICK MEASURE. MAINTAIN CLEAR OF TREES AND SHRUBS.
 ON SEEDS SLOPES, WHERE GRADE IS 3:1 OR GREATER, COVER WITH EROSION FABRIC.

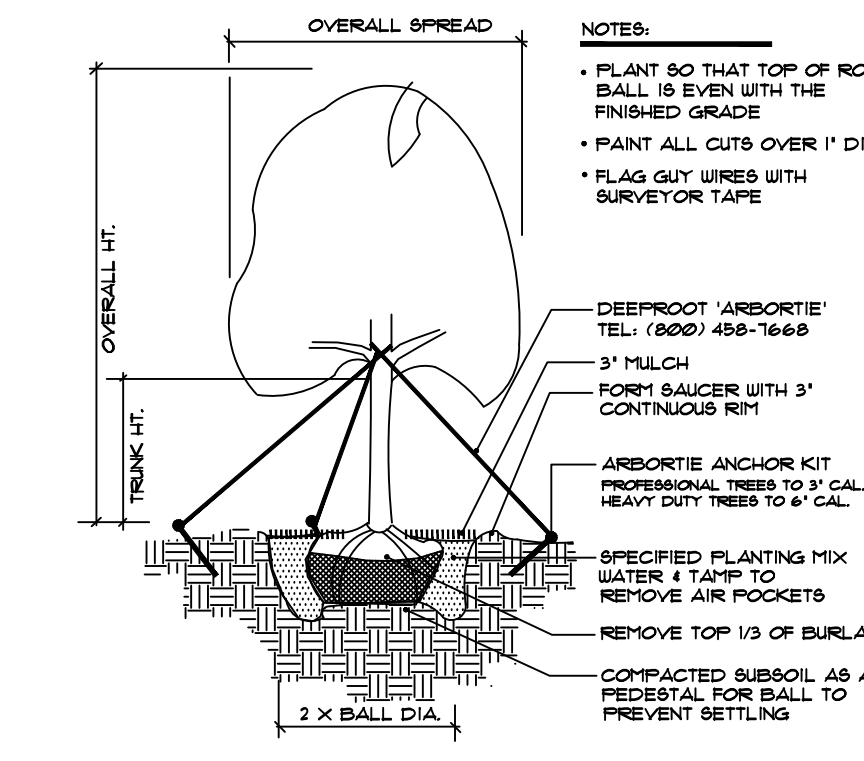
LAWN MAINTENANCE
 MAINTAIN LAWNS UNTIL GRASS IS WELL ESTABLISHED AND EXHIBITS A VIGOROUS GROWING CONDITION. IF SEEDING IN FALL AND IF NOT CONSIDERED ACCEPTABLE AT THAT TIME, CONTINUE MAINTENANCE THE FOLLOWING SPRING UNTIL ACCEPTABLE LAWN IS ESTABLISHED.
 MAINTAIN LAWNS BY WATERING, FERTILIZING, WEEDING, MOULING, TRIMMING, AND OTHER OPERATIONS SUCH AS ROLLING, RE-GRADING, AND REPLANTING AS REQUIRED TO ESTABLISH A SMOOTH, ACCEPTABLE LAWN, FREE OF ERODED OR BARE AREAS.



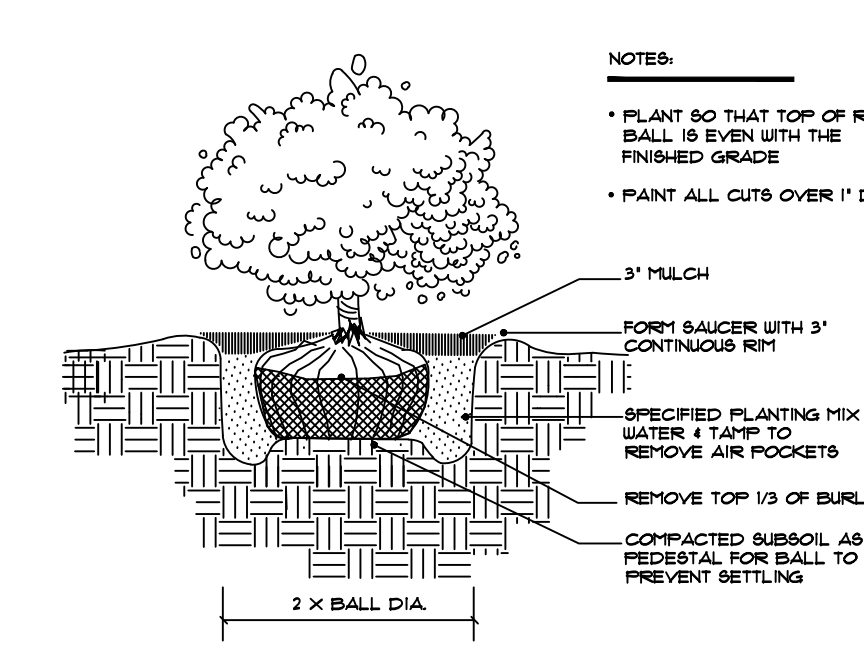
Four-Plex Planting-A
 SCALE 1" = 20'



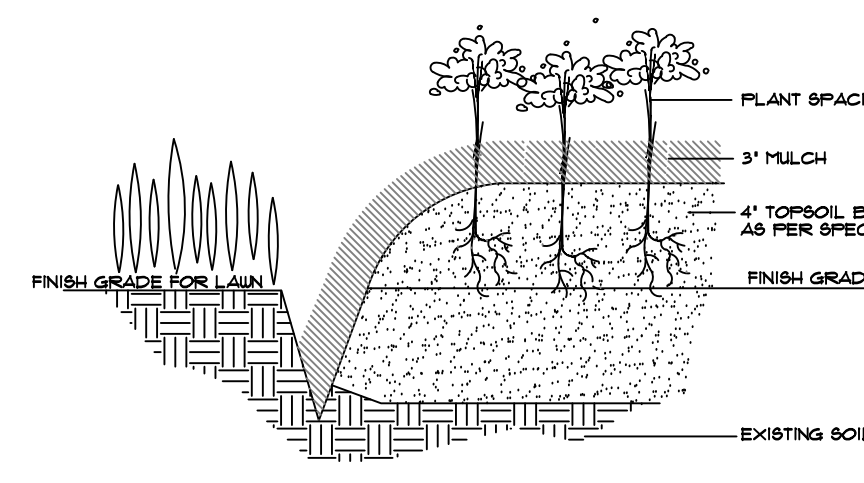
Four-Plex Planting-B
 SCALE 1" = 20'



TREE PLANTING - GUY WIRES
 SCALE: NOT TO SCALE



SHRUB PLANTING
 SCALE: NOT TO SCALE



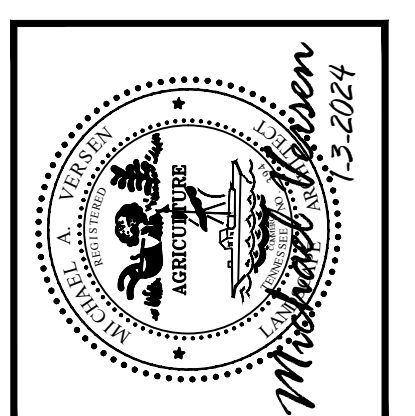
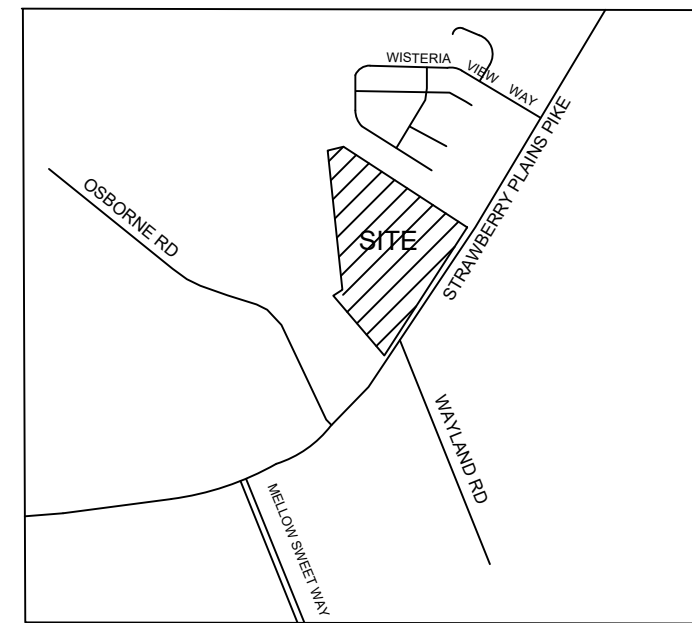
BED PREPARATION
 SCALE: NOT TO SCALE

PLANTING SCHEDULE STREET TREE PLANTING AND UNIT PLANTINGS A AND B (TOTAL)

DECIDUOUS TREES	COMMON / BOTANICAL NAME	SIZE	GAL
6	RED MAPLE / <i>Acer rubrum</i> 'October Glory' TM	10-12H	2'Gal
12	RIVER BIRCH / <i>Betula nigra</i> 'Dura Heat' Multi-Trunk	10-12H	2'Gal
16	WILLOW OAK / <i>Quercus phellos</i>	10-12H	2'Gal
EVERGREEN TREES	COMMON / BOTANICAL NAME	SIZE	GAL
7	FOSTER HOLLY / <i>Ilex attenuata</i> 'Foster's'	6-7' ht.	2'Gal
13	JAPANESE CEDAR / <i>Cryptomeria japonica</i>	6-7' ht.	2'Gal
10	SWEET BAY / <i>Magnolia virginiana</i>	6-7' ht.	2'Gal
FLOWERING TREES	COMMON / BOTANICAL NAME	SIZE	GAL
8	KOUSSA DODONOD / <i>Cornus kousa</i> White	7-8H	1.5'Gal
DECIDUOUS SHRUBS	COMMON / BOTANICAL NAME	SIZE	CONT
30	BURNING BUSH / <i>Euonymus alatus</i> 'Compactus'	24-30"H	3 GAL
4	MINI. GRAPE MYRTLE / <i>Lagerstroemia indica</i> 'Pakomake'	12-15"H	3 gal
12	OAKLEAF HYDRANGEA / <i>Hydrangea quercifolia</i>	24-30"H	B4B
9	PEE WEE HYD. / <i>Hydrangea quercifolia</i> 'Pee Wee'	15-18" H	3 gal
EVERGREEN SHRUBS	COMMON / BOTANICAL NAME	SIZE	CONT
42	CHESTNUT HILL LAUREL / <i>Prunus laurocerasus</i> 'Chestnut Hill'	18"H	B4B
35	DWARF NANDINA / <i>Nandina domestica</i> 'Gulf Stream'	12-15"H	3 gal
21	OTTO LUYKEN LAUREL / <i>Prunus laurocerasus</i> 'Otto Luyken'	18"H	B4B
24	PLUM YEUX / <i>Cephalotaxus harringtonia</i> 'Prostrata'	12-15"H	3 gal
ADDITIONAL ITEMS	MATERIAL	DESCRIPTION	
as per plan	HARDWOOD MULCH trees and shrubs	cu. yd. (allowance)	
by general contractor	TOP SOIL - PLANTING BEDS (12" all planting bed areas / 4" all lawn areas)	cu. yd. (allowance)	
as per plan	SEED tal fescue blend	sq. ft.	

QUANTITIES ARE FOR THE CONTRACTORS CONVENIENCE ONLY. CONTRACTORS SHALL BE RESPONSIBLE FOR ALL PLANTINGS ILLUSTRATED ON PLAN.

LOCATION MAP



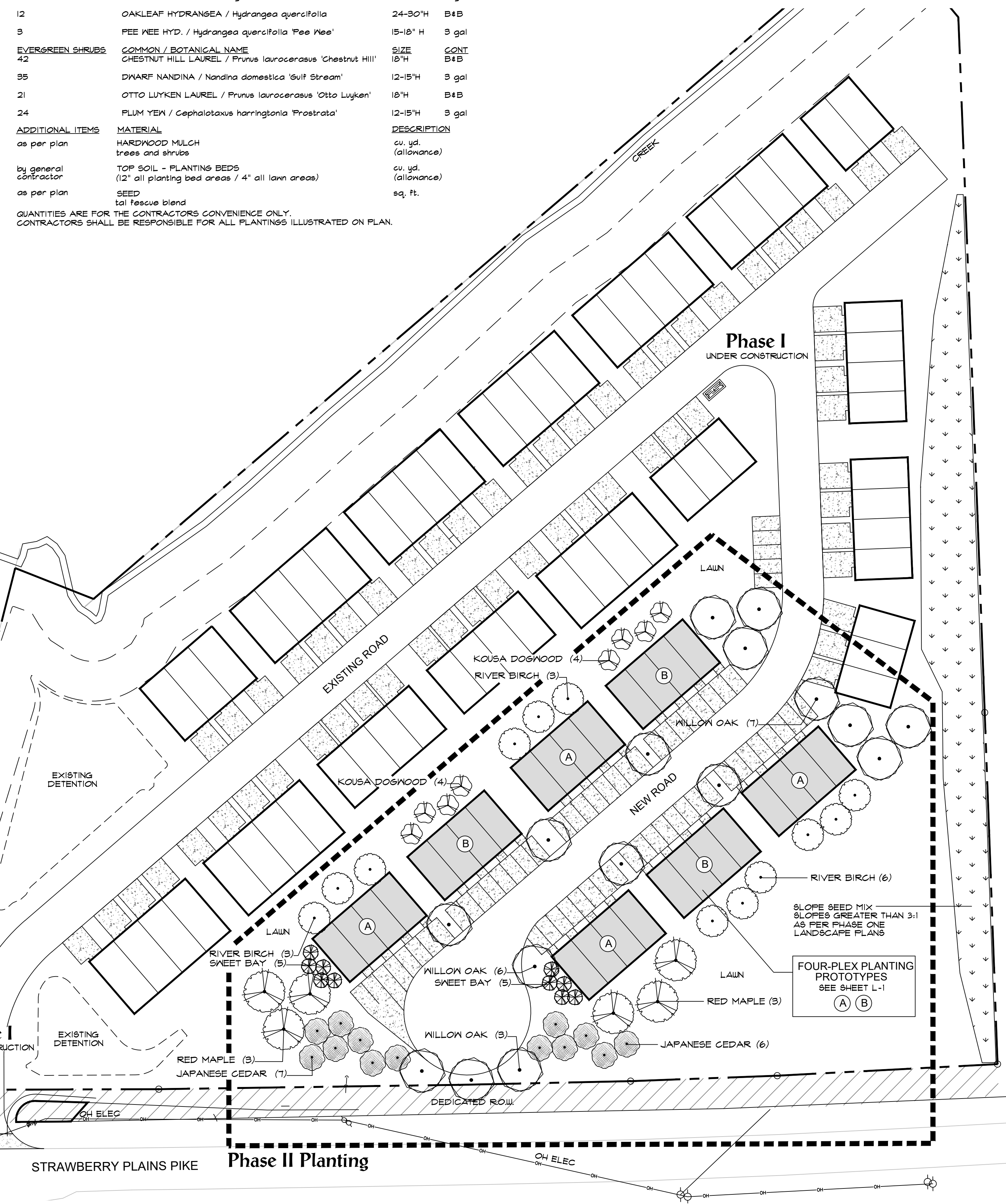
MICHAEL VERSEN & ASSOCIATES
 LANDSCAPE ARCHITECTURE AND LAND PLANNING
 799 N. WEISBARGER RD., SUITE 201, KNOXVILLE, TN 37919
 (606) 988-1931

Landscape Plan

Strawberry Meadows -phase II
 6721 Strawberry Plains Pike Knoxville, Tennessee

JOB NO. 223058
 DRAWN: MAV/RJM
 DATE: JAN. 3, 2024
 REVISIONS:

L-1



Overall Plan
 SCALE 1" = 40'