

Feature	TDEC	USACE	SIZE
CH 1	Stream	Perennial Stream	+/-450'(L)x6'(W)
CH 2	Stream	Intermittent Stream	+/-145'(L)x1'(W)
CH 3	Stream	Intermittent Stream	+/-655'(L)x1'(W)
CH 4	WWC	Ephemeral Stream	+/-1550'(L)x2'(W)
CH 5	WWC	Ephemeral Stream	+/-3835'(L)x2'(W)

**Note:**

Site boundary and features shown are approximate only.  
Drawing composed from field notes and observations only.

— Subject Property.

SCALE:	NTS
CHECKED BY:	JM
DRAWN BY:	CSG
DATE:	9-4-2021



2651 Willow Point Way  
Knoxville, Tennessee 37931

Phone: (865) 539-8242  
Fax: (865) 539-8252

WATER RESOURCE MAP  
SEVIERVILLE PIKE  
STREAM DETERMINATION  
8802 SEVIERVILLE PIKE  
KNOX COUNTY, TENNESSEE

JOB NO: 24-21945

2

Dry Hollow 3/1992

**Legend**

- ?
- ? ? Smoky Mountain
- 8802 Sevierville Pike



Google Earth

Image U.S. Geological Survey





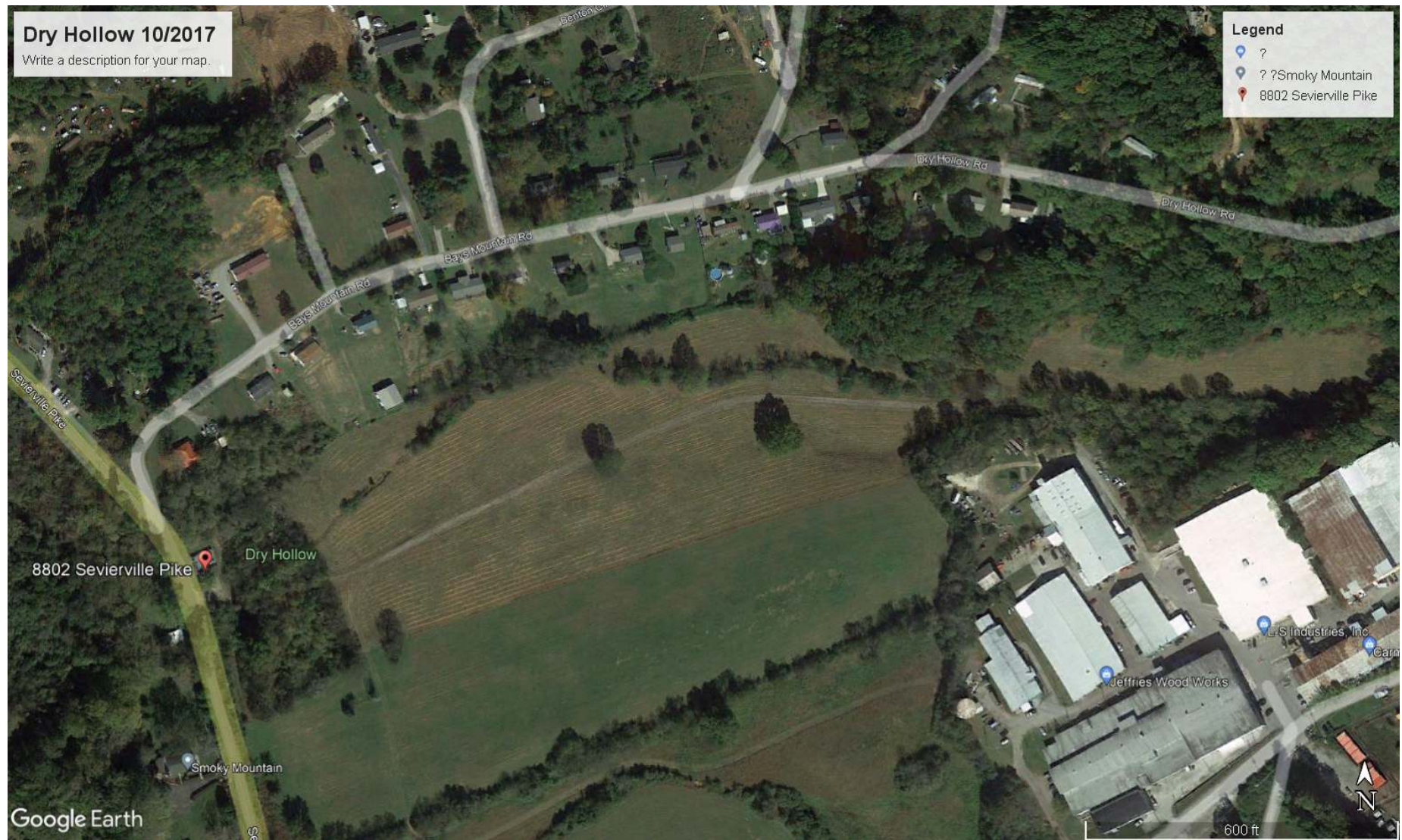


# Dry Hollow 10/2017

Write a description for your map.

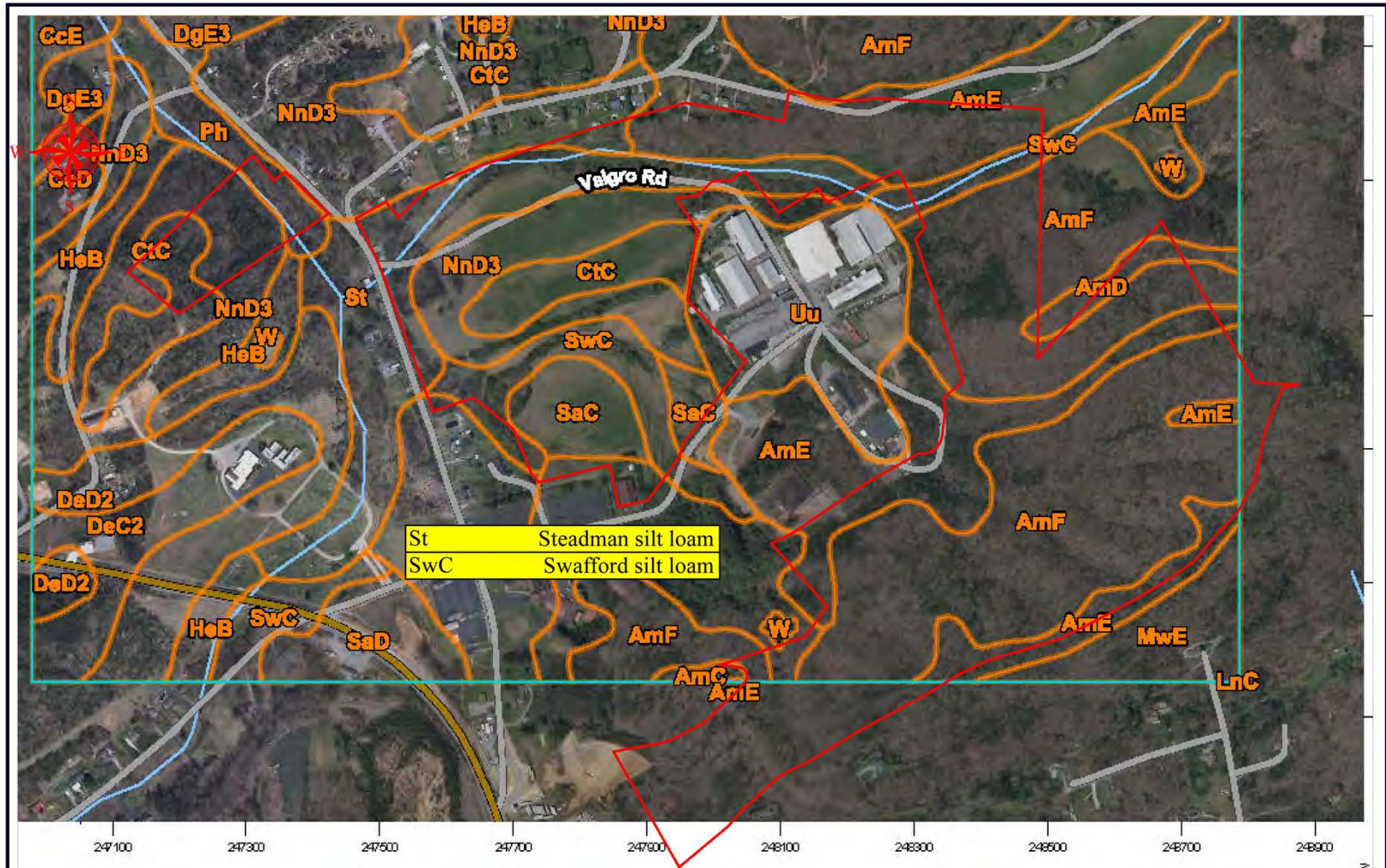
## Legend

- ? ?
- ? ? Smoky Mountain
- 8802 Sevierville Pike



Google Earth





Note:  
 Site boundary and features shown are approximate only.  
 Drawing composed from field notes and observations only.  
 — Subject Property.

SCALE:	NTS
CHECKED BY:	JM
DRAWN BY:	CSG
DATE:	9-4-2021

**GEOS**  
 GEOServices, LLC Geotechnical and Materials Engineers  
 2651 Willow Point Way  
 Knoxville, Tennessee 37931  
 Phone: (865) 539-8242  
 Fax: (865) 539-8252

WEB SOIL SURVEY SEVIERVILLE PIKE STREAM DETERMINATION 8802 SEVIERVILLE PIKE KNOX COUNTY, TENNESSEE	JOB NO: 24-21945
--	------------------