

E-Z Stop Foodmart #32
12591 Chapman Hwy, Seymour, TN 37865





Green Giant Arborvitae
Thuja (standish x plicata) 'Green Giant'
Type: Evergreen Tree
Growth Rate: Fast (Avg. 2' per year or greater)
Mature Size: 25' - 30' tall, 8' -10' wide

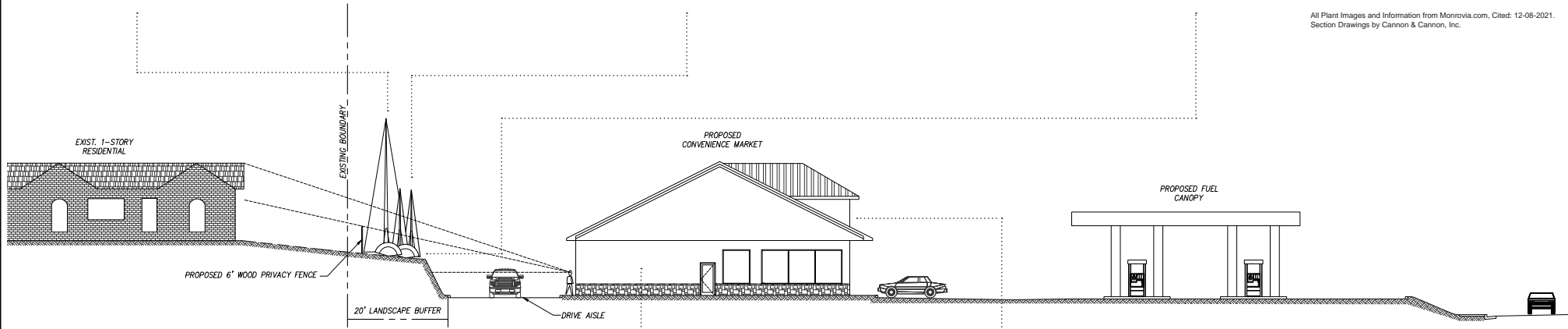


Emerald Green Arborvitae
Thuja occidentalis 'Smaragd'
Type: Evergreen Tree
Growth Rate: Moderate (Avg. 1'-2' per year)
Mature Size: 15' tall, 3'-4' wide

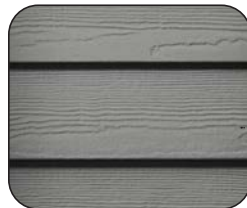


Otto Luyken English Laurel
Prunus laurocerasus 'Otto Luyken'
Type: Evergreen Shrub, Flowering
Growth Rate: Moderate (Avg. 1'-2' per year)
Mature Size: 3' tall, 6' wide

All Plant Images and Information from Monrovia.com, Cited: 12-08-2021.
Section Drawings by Cannon & Cannon, Inc.



CROSS SECTION




HARDIE PLANK SIDING MATERIAL OPTION

NOTE: FINAL MATERIAL SELECTION FOR SCHAAD ROAD
LOCATION TO BE DETERMINED



STORE FRONT EXAMPLE SEYMOUR, TN

REVISIONS		DATE			
					
CLIENT:		CALLOWAY-HUNT REAL ESTATE P.O. BOX 6618 MARYSVILLE, TN 37802			
PROJECT:		E-Z STOP FOOD MART SCHAAD ROAD KNOX COUNTY, TN 37931			
CROSS SECTION EXHIBIT					
USE ON REVIEW SUBMITTAL FILE NUMBER: 12-D-21-UR		CGI PROJECT NO. 01634-0001			
		DRAWING DATE DECEMBER 8, 2021			
		PIN	DKN	PKC	JRH
		DRAWN	LED	CHECKED	-
		UOR4.02			